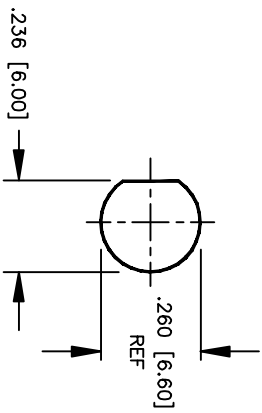
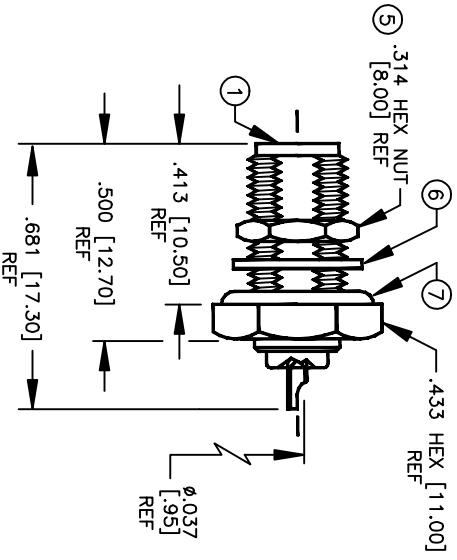


# SPECIFICATION CONTROL DRAWING

THIS DRAWING CONTAINS INFORMATION PROPRIETARY TO RF INDUSTRIES, LTD. ANY UNAUTHORIZED USE OF THIS DRAWING IS EXPRESSLY PROHIBITED. ANY VIOLATION IS PUNISHABLE UNDER U.S. COPYRIGHT LAWS.

008974

REV	DESCRIPTION	DWN	DATE	APPROVED
A	ENGINEERING RELEASE	KMM	10/25/95	R. RICE
B	ADD SOLDER POT ID	KMM	8/25/96	R. RICE



RECOMMENDED MOUNTING HOLE  
 .094 [2.40] MAX PANEL THICKNESS

## SPECIFICATIONS:

IMPEDANCE: 50 OHMS  
 WORKING VOLTAGE: 335 VRMS @ SEA LEVEL  
 FREQUENCY RANGE: 0-12.4 GHZ

ITEM	DESCRIPTION	QTY	MATERIAL	FINISH
7	O RING	1	S.I. RUBBER	RED
6	LOCK WASHER [LKW-250]	1	BRASS	GOLD
5	HEX NUT [HEX-250-36S]	1	BRASS	GOLD
4	DIELECTRIC	1	PTFE	NONE
3	DIELECTRIC	1	PTFE	NONE
2	PIN	1	BeCu	GOLD
1	BODY	1	BRASS	GOLD

DIMENSIONS ARE IN INCHES AND [MILLIMETERS] UNLESS OTHERWISE NOTED TOLERANCES ARE:

DECIMALS      DIAMETER

DRAWN  
K. MAXWELL

CHECKED

ORU DRAWN  
K. MAXWELL

APPROVALS

8/25/96

10/25/95

DATE

DIVISION OF RF INDUSTRIES, LTD.

7610 MIRAMAR RD  
 SAN DIEGO, CA 92126  
 (619)549-6340  
 (619)549-6345 FAX

## RSA-3251-1-10

SMA FEMALE BULKHEAD, SOLDER, REAR MNT W/O RING

SIZE A      CABLE GROUP N/A      DWG NO. 8570      REV B

SCALE: 2:1      CAD FILE      SHEET 1 OF 1