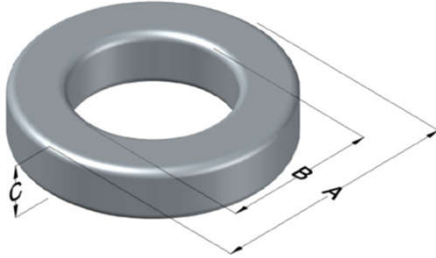




**0077336A7**

110 Delta Drive  
 Pittsburgh, PA 15238  
 NAFTA Sales: (1)800-245-3984  
 HK Sales : (852)3102-9337  
 magnetics@spang.com  
 www.mag-inc.com



Kool M $\mu$ Permeability ( $\mu$ )	A <sub>L</sub> (nH/T <sup>2</sup> )	Core Marking			Coating Color
		Lot Number	Part Number	Inductance Grade	
14	37 $\pm$ 8%	XXXXXX	77336A7	N/A	Black

Dimensions	Uncoated		Coated Limits			Packaging
	(mm)	(in)	(mm)	(in)		
OD (A)	132.56	5.219	133.96	5.274	max	Cardboard cut-outs Box Qty= 16 pcs
ID (B)	78.59	3.094	77.19	3.039	min	
HT (C)	25.40	1.000	26.80	1.055	max	

Electrical Characteristics			Physical Characteristics						
Watt Loss @ 100kHz, 100mT max (mW/cm <sup>3</sup> )	DC Bias min (oersteds)		Voltage Breakdown wire to wire min (V <sub>AC</sub> )	Break Strength min (kg)	Window Area W <sub>a</sub> (mm <sup>2</sup> )	Cross Section A <sub>e</sub> (mm <sup>2</sup> )	Path Length L <sub>e</sub> (mm)	Volume V <sub>e</sub> (mm <sup>3</sup> )	Est. Weight (g)
	80%	50%							
1200	175	350	3000	227.0	4,680	678	324.3	220,000	1,150

Winding Information					Temperature Rating	
Winding Length Per Turn				Wound Coil Dimensions (mm)		Curie Temp: 500°C
Winding Factor	(mm)	Winding Factor	(mm)	40% Winding Factor	OD	Coating Temp (Continuous up to): 200°C
					HT	
0%	110	40%	149	Completely Full Window	Max OD	Notes:
20%	130	45%	156		Max HT	
25%	135	50%	161	Surface Area (mm <sup>2</sup> )		
30%	139	60%	173	Unwound Core	37,000	
35%	145	70%	186	40% Winding Factor	63,000	

