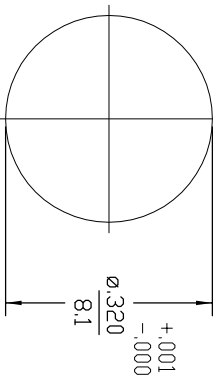
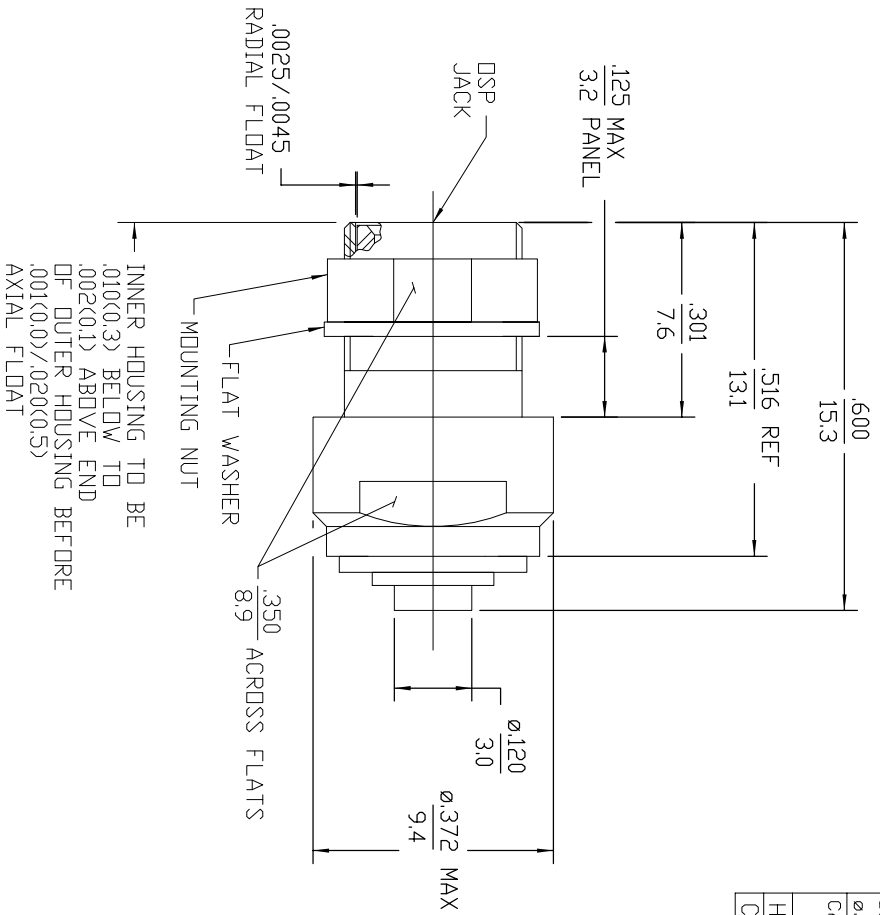


DESIGNED FOR USE WITH		REVISIONS	
REV	DESCRIPTION	DATE	APPROVED
041	REVISED	7/25/96	<i>[Signature]</i>
041	REVISED	8/5/97	<i>[Signature]</i>
HOUSING CONTACT	.089	A1	REVISIED
HOUSING	.021		



NOTES:
1. CAPTURED CENTER CONTACT

COMPONENT	MATERIAL	FINISH
HOUSING, INNER BUSHING	STAINLESS STEEL PER ASTM-A484 AND ASTM-A582, TYPE 303	GOLD PLATE PER MIL-G-45204
HOUSING, OUTER MOUNTING NUT	STAINLESS STEEL PER ASTM-A484 AND ASTM-A582, TYPE 303	PASSIVATE PER QQ-P-35
DIELECTRIC	TFE FLUOROCARBON PER ASTM-D-1457	N/A
CENTER CONTACT	BERYLLIUM COPPER PER ASTM-B-196 DR ASTM-B-197, ALLOY C17300, CONDITION H	GOLD PLATE PER MIL-G-45204
CONTACT SLEEVE	BERYLLIUM COPPER PER ASTM-B-196, ALLOY C17300, CONDITION H	GOLD PLATE PER MIL-G-45204
CONTACT RING	BERYLLIUM COPPER PER ASTM-B-194, ALLOY C17200, CONDITION H	NICKEL PLATE PER QQ-N-290
RETAINING RING	BERYLLIUM COPPER PER ASTM-B-194, ALLOY C17200, CONDITION H	NICKEL PLATE PER QQ-N-290
FLAT WASHER	BRASS PER ASTM-B-16	NICKEL PLATE PER MIL-C-26074
SPRING	MUSIC WIRE	

COMPONENT	MATERIAL	FINISH
UNLESS OTHERWISE SPECIFIED DIMENSIONS ARE IN INCHES		
FRACTION	DECIMALS	ANGLES
± 1/64	± .005	± 1°

DRAWN BY		DATE	
K.C. MAHER	1/5/88		
CHECKED BY	1/7/88		
M.H.M.			
APPROVED BY	1/7/88		
BAR			

USE ASS'Y PROCEDURE	
408-04596	NO. AP. (45-047)

COPY IN PUERTO RICO

CUSTOMER DRAWING

AMP PART # 1057230-1

SHEET 1 OF 1 REV A1