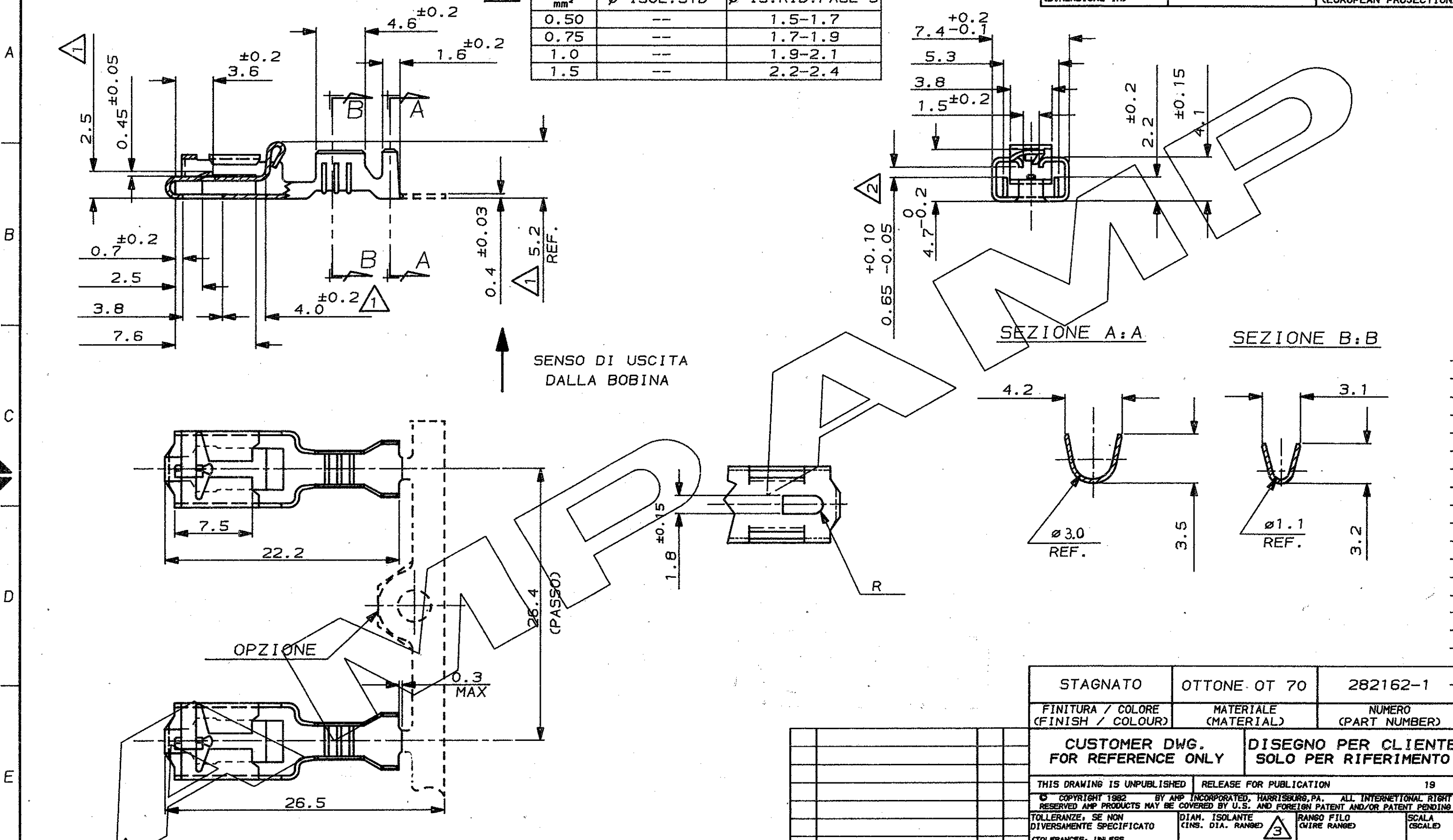


(WIRE) SEZ. FILO mm <sup>2</sup>	(INS. DIA. STD) Ø ISOL. STD	(INS. DIA. REDUCED) Ø IS. RID. FASE 3
0.50	--	1.5-1.7
0.75	--	1.7-1.9
1.0	--	1.9-2.1
1.5	--	2.2-2.4

SCALA NON IMPEGNATIVA  
(DO NOT SCALE)  
DIMENSIONI IN mm  
(DIMENSIONS IN mm)

**METRIC**

PROIEZIONE EUROPEA  
(EUROPEAN PROJECTION)



- NOTE:
- 1 DA MISURARSI CON LA MOLLA IN POSIZIONE ORIZZONTALE
  - 2 ADATTO PER TERMINALE MASCHIO CON FORO, SECONDO TABELLA FIAT 91319 FOGLIO 2 (TIPO A)
  - 3 PRELIMINARY: C27400 AS ALTERNATIVE MATERIAL
  - 4 ONLY WELDED SPLICES ALLOWED

STAGNATO	OTTONE OT 70	282162-1
FINITURA / COLORE (FINISH / COLOUR)	MATERIALE (MATERIAL)	NUMERO (PART NUMBER)

CUSTOMER DWG. FOR REFERENCE ONLY      DISEGNO PER CLIENTE SOLO PER RIFERIMENTO

THIS DRAWING IS UNPUBLISHED	RELEASE FOR PUBLICATION	19
© COPYRIGHT 1982 BY AMP INCORPORATED, HARRISBURG, PA. ALL INTERNATIONAL RIGHT RESERVED AMP PRODUCTS MAY BE COVERED BY U.S. AND FOREIGN PATENT AND/OR PATENT PENDING		
TOLLERANZE, SE NON DIVERSAMENTE SPECIFICATO (TOLERANCES, UNLESS OTHERWISE SPECIFIED)	DIAM. ISOLANTE (INS. DIA. RANGED)	RANGO FILO (WIRE RANGED)
± 0.3	1.5-2.4 DIA	0.5-1.5 mm <sup>2</sup>



REV.	REVISIONI (REVISION RECORD)	DIS. DATA (CDR. DATE)	APP. CAPP. (DATE)
A2	REVISED PER ECR-20-012400	SS EW	
A1	ECR-15-008926	KY JD	
A	RELEASED FOR PRODUCTION	22 FEB 91	CONT. (ECH 2-278)
	ERA 90-51123		

DESCRIZIONE (DESCRIPTION)	POSITIVE LOCK REC. MARK I WITH ANTIOVERSTRESS
LOC. SIZE NUMERO (DRG NO)	A3 C-282162
REV.	A2
FOGLIO (SHEET)	01 (OF)

DISTRIBUZIONE  
PRINT DIST.