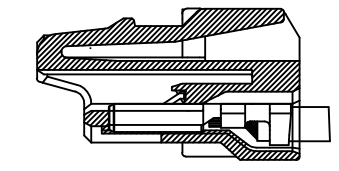
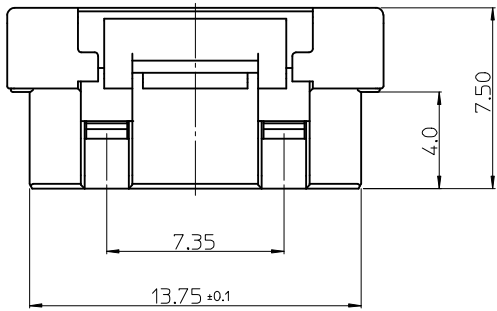
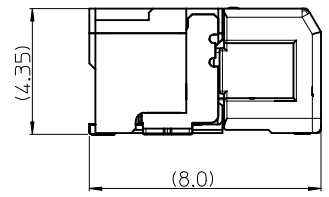
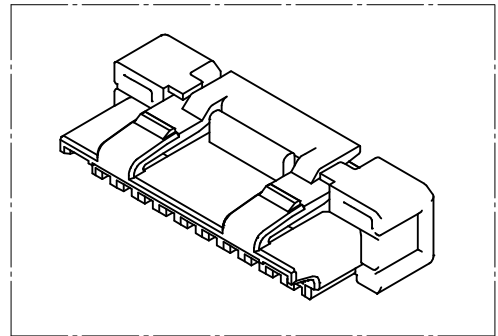


10 9 8 7 6 5 4 3 2 1

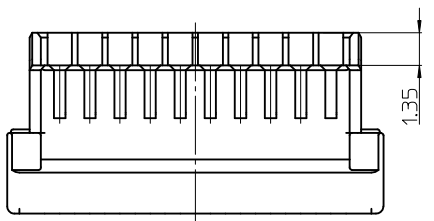
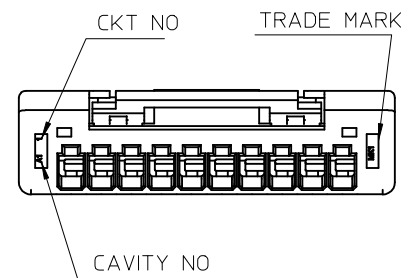
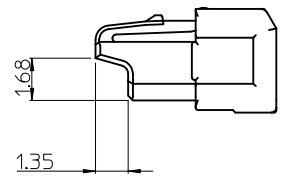
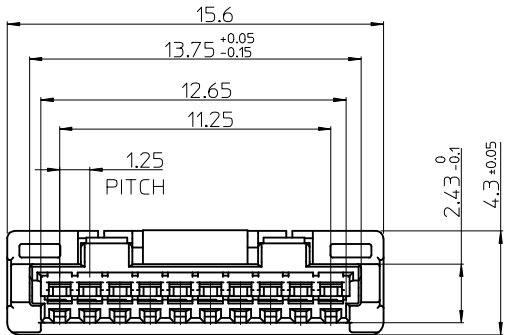


TERMINAL ASSEMBLY DRAWING
[REFERENCE]



MATED WITH HEADER ASSEMBLY
[REFERENCE]

- NOTES.
- MATED WITH : 104091-1020
 - MATERIAL : LCP, VECTRA E471i
GLASS FILLED, UL 94V-0
HALOGEN FREE, NATURAL COLOR
 - APPLICABLE TERMINAL : 104521-6001
 - PRODUCT SPECIFICATION : PS-104091-001



ORDER NO 104092-1000

RELEASED EC NO: KOR2012-0022 DRWN: JHPARK01 CHKD: APPR: YUNSIKKIM 2011/09/22 2011/09/30 DESCRIPTION	QUALITY SYMBOLS ▽=0 ▽=0	GENERAL TOLERANCES (UNLESS SPECIFIED) mm INCH 4 PLACES ± --- ± --- 3 PLACES ± --- ± --- 2 PLACES ± 0.15 ± --- 1 PLACE ± 0.2 ± --- ANGULAR ± 1°	DIMENSION STYLE MM ONLY DRAWN BY DATE JHPARK01 2011/09/22 CHECKED BY DATE SHCHU 2011/09/22 APPROVED BY DATE YUNSIKKIM 2011/09/30	SCALE 5:1 DESIGN UNITS METRIC THIRD ANGLE PROJECTION	TITLE 1.25 W-T-B CONN. PLUG HOUSING-10P
	DRAFT WHERE APPLICABLE MUST REMAIN WITHIN DIMENSIONS	MATERIAL NO. 1040921000	MOLEX INCORPORATED	SHEET NO. 1 OF 01	
	SIZE A3	THIS DRAWING CONTAINS INFORMATION THAT IS PROPRIETARY TO MOLEX INCORPORATED AND SHOULD NOT BE USED WITHOUT WRITTEN PERMISSION			
	A	REV	DOCUMENT NO. SD-104092-002	ORDER NO 104092-1000	

9 8 7 6 5 4 3 2 1