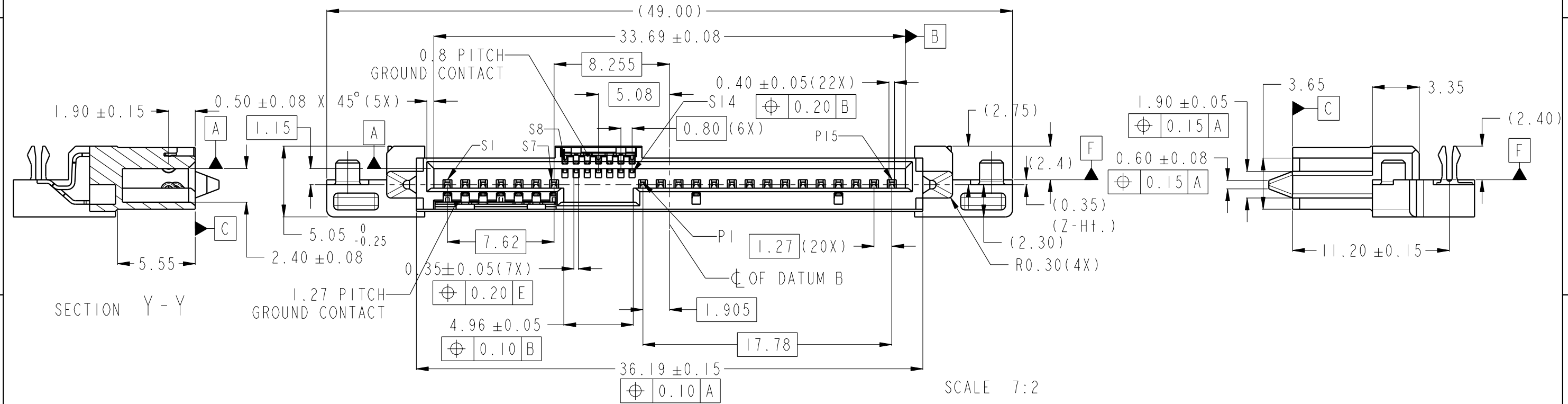
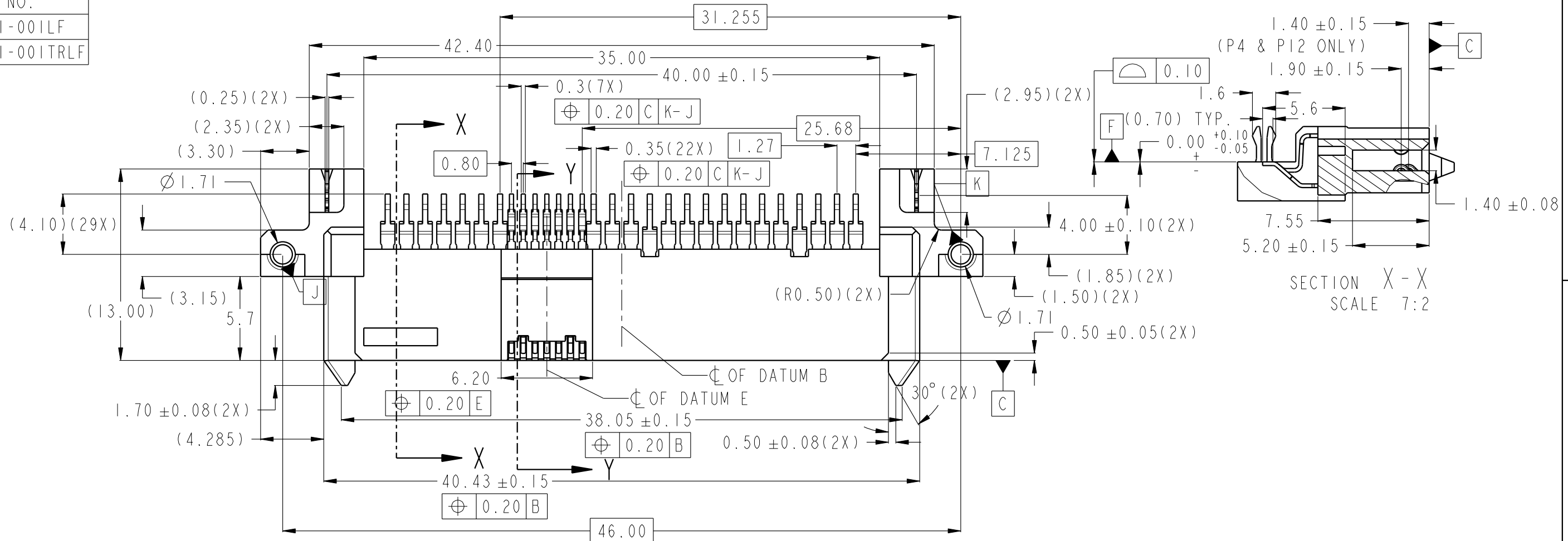
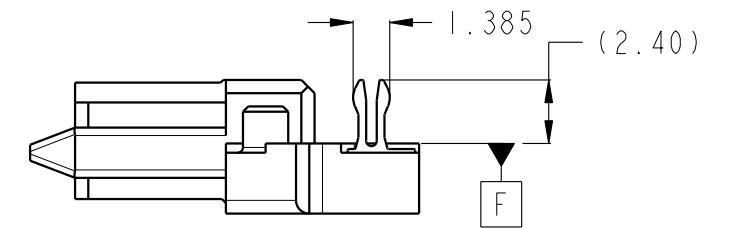
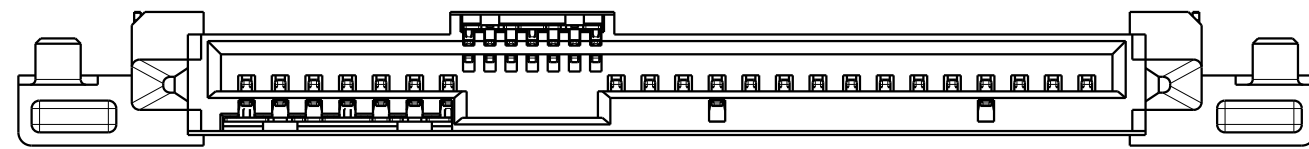
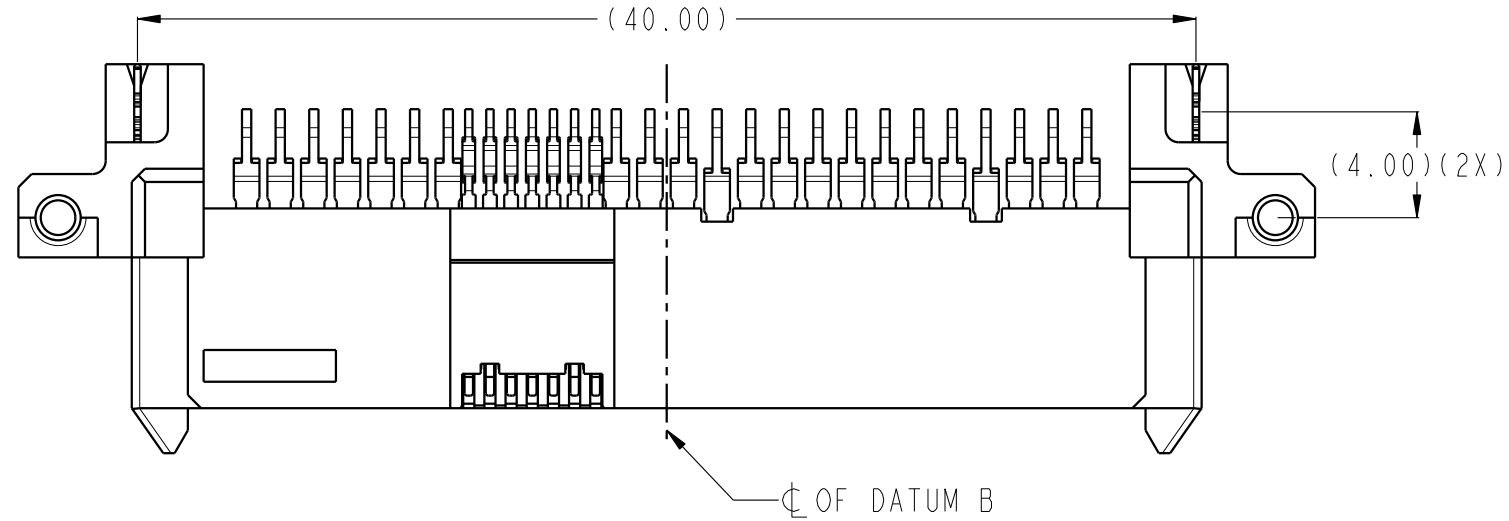


PRODUCT NO.
10123371-001LF
10123371-001TRLF



spec ref	-	dr	Jeffrey Lim	2014/12/17	projection	MM	size	A3	scale	7:2								
tolerance std	TOLERANCES UNLESS OTHERWISE SPECIFIED	eng	Jeffrey Lim	2021/08/04			ecn no	ELX-S-41907-1	rel level	Released								
surface	<table border="1"> <tr> <td>linear</td> <td>0.X</td> <td>±</td> </tr> <tr> <td></td> <td>0.XX</td> <td>±0.20</td> </tr> <tr> <td></td> <td>0.XXX</td> <td>±</td> </tr> <tr> <td>angular</td> <td>0°</td> <td>±2°</td> </tr> </table>	linear	0.X	±				0.XX		±0.20		0.XXX	±	angular	0°	±2°	appr	Koon-Poh Tay
linear	0.X	±																
	0.XX	±0.20																
	0.XXX	±																
angular	0°	±2°																
		Amphenol FCI 12G SAS RECEPTACLE R/A ASSY, Z-HT. 0.35			cat. no.		Product - Customer Drw		sheet 1 of 4									
		dwg no 10123371		rev D														

PRODUCT NO.
10123371-002LF
10123371-002TRLF



SCALE 7:2

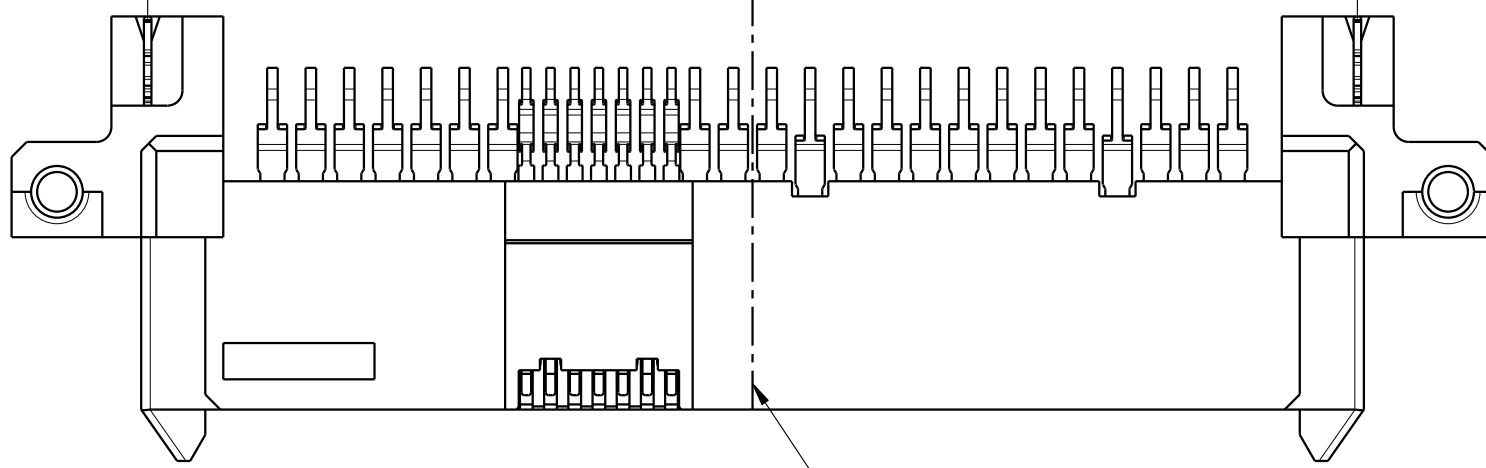
FOR MORE DIMENSIONS, REFER TO -001LF

spec ref	-			dr	Jeffrey Lim	2014/12/17	projection	MM	size	A3	scale	1:1
tolerance std	TOLERANCES UNLESS OTHERWISE SPECIFIED			eng	Jeffrey Lim	2021/08/04			ecn no		ELX-S-41907-1	
-				chr	-	product family			rel level		Released	
surface	<input checked="" type="checkbox"/> linear <input type="checkbox"/> angular	0.X	±-	Amphenol FCI amphenol-icc.com	title 12G SAS RECEPTACLE R/A ASSY, Z-HT. 0.35		cat. no.	Product - Customer Drw	sheet 2 of 4	rev D		
-		0.XX	±0.20		dwg no 10123371							
-	0.XXX	±-										
-	0°	±2°										

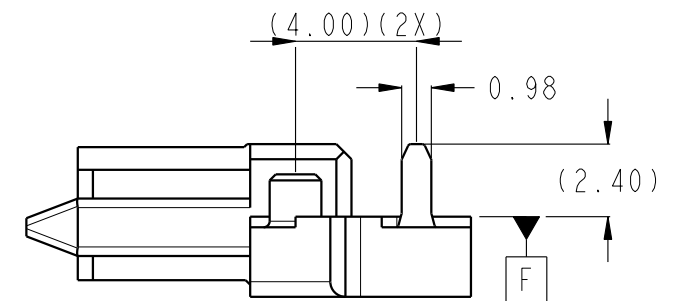
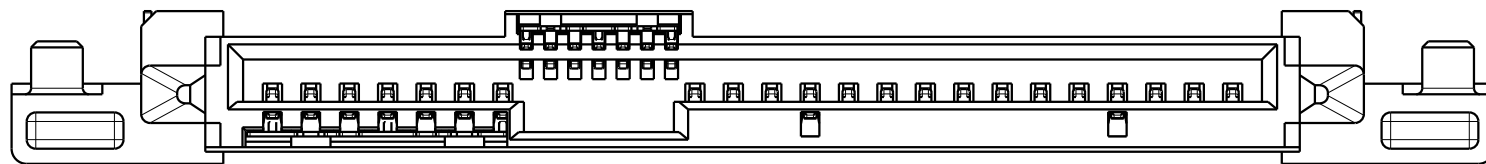
PRODUCT NO.
10123371-003C-TRLF



(40.00)



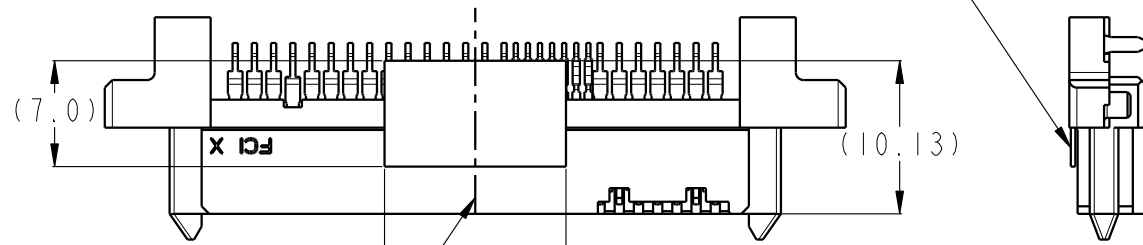
CL OF DATUM B



SCALE 4:1

FOR MORE DIMENSIONS, REFER TO -0011E

PICK-UP TAPE
(KAPTON)

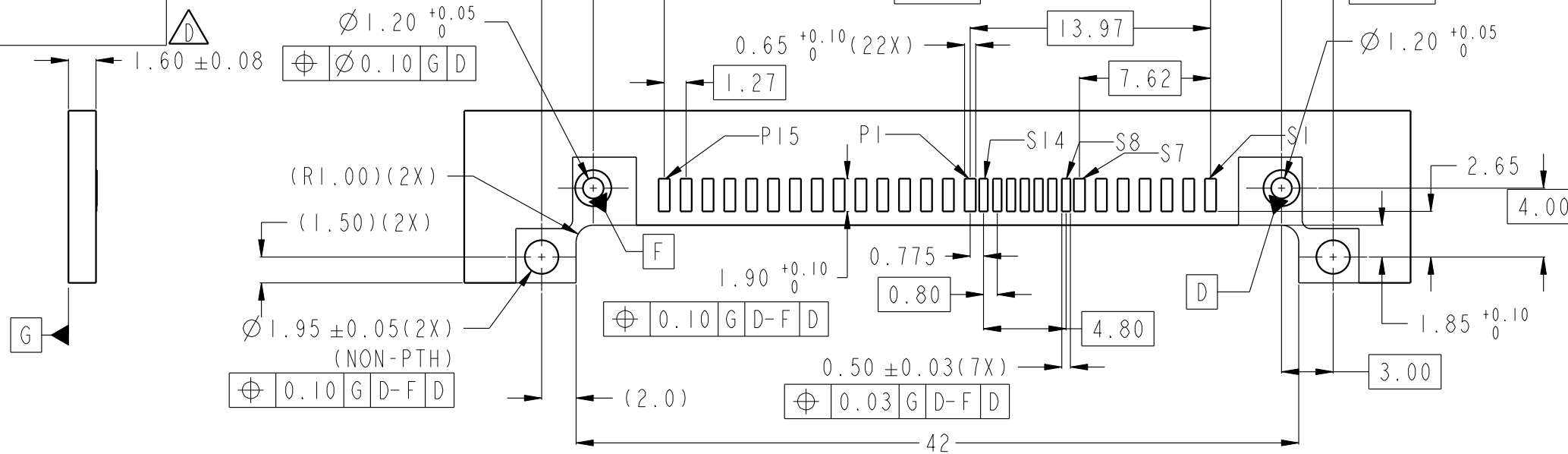


CL OF PICK-UP TAPE AND
CONNECTOR

SCALE 2:1
WITH KAPTON TAPE ATTACHED

spec ref	-	dr	Jeffrey Lim	2014/12/17	projection	MM	size	A3	scale	1:1											
tolerance std	TOLERANCES UNLESS OTHERWISE SPECIFIED	eng	Jeffrey Lim	2021/08/04			ecn no	ELX-S-41907-1													
-		chr	-	-			rel level	Released													
surface	<table border="1"> <tr> <td>linear</td> <td>0.X</td> <td>±-</td> </tr> <tr> <td></td> <td>0.XX</td> <td>±0.20</td> </tr> <tr> <td></td> <td>0.XXX</td> <td>±-</td> </tr> <tr> <td>angular</td> <td>0°</td> <td>±2°</td> </tr> </table>	linear	0.X	±-		0.XX	±0.20		0.XXX	±-	angular	0°	±2°	appr	Koon-Poh Tay	2021/08/10	product family			rel level	Released
linear	0.X	±-																			
	0.XX	±0.20																			
	0.XXX	±-																			
angular	0°	±2°																			
-		Amphenol FCI	12G SAS RECEPTACLE			cat. no.	10123371		rev	D											
-		amphenol-icc.com	R/A ASSY, Z-HT. 0.35			Product - Customer Drw	sheet 3 of 4														

PRODUCT NO.	PACKAGING
10123371-001LF	TRAY
10123371-002LF	
10123371-001TRLF	TAPE & REEL
10123371-002TRLF	
10123371-003C-TRLF	

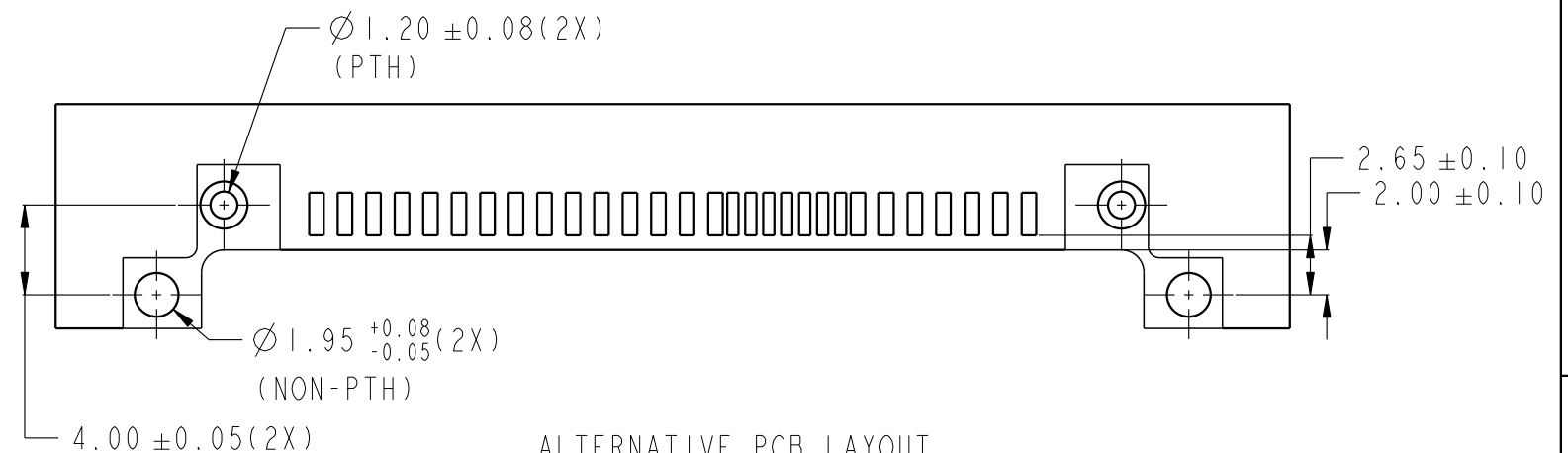


SCALE 3:1

RECOMMENDED PCB LAYOUT
(GENERAL TOLERANCE: ± 0.05)

NOTES:

- MATERIALS:
 - HOUSING: HIGH TEMP THERMOPLASTIC, UL 94V-0, COLOUR: BLACK
 - TERMINAL, FORK-LOCK CLIP AND GROUND CONTACT: COPPER ALLOY
 - KAPTON TAPE: POLYIMIDE
- FINISH:
 - TERMINAL: 30 μ " MIN Au PLATING (CONTACT POINT) OVER 50 μ " MIN NICKEL
 - SOLDER TAIL: 100 μ " MIN TIN OVER 50 μ " MIN NICKEL
 - FORK-LOCK CLIP: 100 μ " MIN TIN OVER 50 μ " MIN NICKEL
- PRODUCT SPECIFICATION : GS-12-1120
- PACKAGING SPECIFICATION: GS-14-841(TRAY); GS-14-966(TAPE & REEL)
- THIS PRODUCT IS COMPLY WITH SFF-8680 SPECIFICATION
- THIS PRODUCT MEETS EUROPEAN UNION DIRECTIVES AND OTHER COUNTRY REGULATIONS AS DESCRIBED IN GS-47-0004
- THE HOUSING WILL WITHSTAND EXPOSURE TO 260° PEAK TEMPERATURE FOR 10 SECONDS IN A CONVECTION, INFRA-RED OR VAPOR PHASE REFLOW OVEN
- A SYMBOL WILL BE NEXT TO ANY DIMENSION, VIEW, OR NOTE WHICH HAS BEEN MODIFIED WITH THE CURRENT DRAWING REVISION



ALTERNATIVE PCB LAYOUT
(REFER TO RECOMMENDED PCB LAYOUT FOR UNSPECIFIED DIMENSIONS)

SCALE 3:1

spec ref	-	dr	Jeffrey Lim	2014/12/17	projection	MM	size	A3	scale	1:1	
tolerance std	TOLERANCES UNLESS OTHERWISE SPECIFIED	eng	Jeffrey Lim	2021/08/04			ecn no	ELX-S-41907-1			
		chr	-				rel level	Released			
		appr	Koon-Poh Tay	2021/08/10			product family				
surface	linear	0.X	\pm		Amphenol FCI		title	12G SAS RECEPTACLE		rev	D
		0.XX	± 0.20		amphenol-icc.com		part no.	R/A ASSY, Z-HT. 0.35		cat. no.	-
		0.XXX	\pm				Product - Customer Drw			sheet 4 of 4	
	angular	0°	$\pm 2^\circ$				STATUS:Released	Printed: Aug 10, 2021			