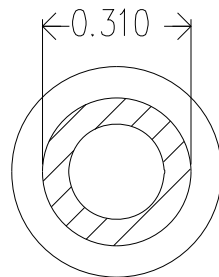
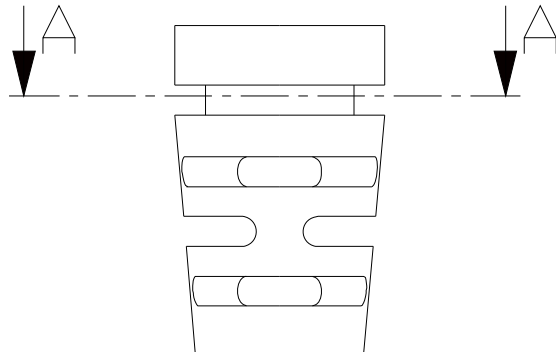
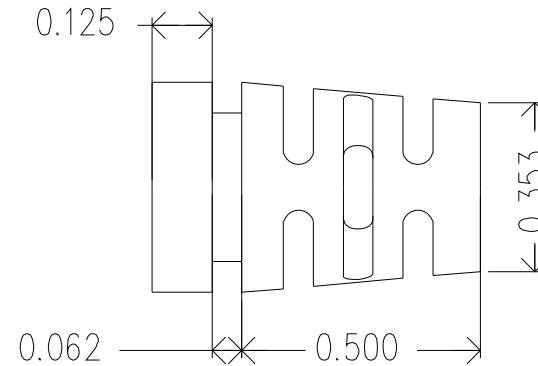
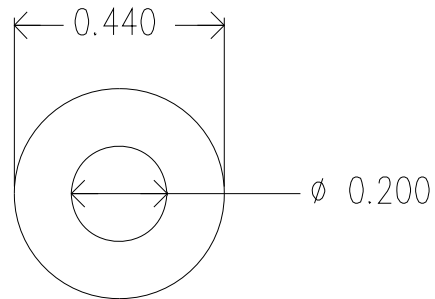
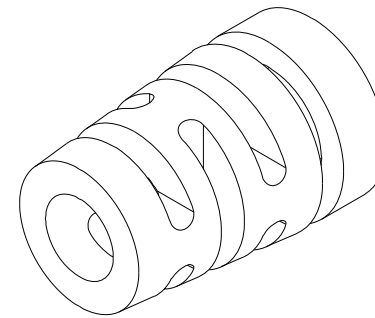


REVISIONS				
ZONE	REV.	DESCRIPTION	DATE	APPROVED
	1	Updated PVC from 5000091 to 5000214	6/9/16	RF



A-A



MOLD MATERIAL: ISC P/N: 5000214, PVC, M1472, Black, RoHS

Dimensions are subject to change.
 PROPRIETARY AND CONFIDENTIAL
 THE INFORMATION CONTAINED IN THIS DRAWING IS THE SOLE PROPERTY OF ISC ENGINEERING. ANY REPRODUCTION IN PART OR AS A WHOLE WITHOUT THE WRITTEN PERMISSION OF ISC ENGINEERING IS PROHIBITED.

		DIMENSIONS ARE IN INCHES		NAME	DATE	ISC Engineering 4351 Schaefer Ave, China, CA 91710 Ph: 909-596-3315 Fax: 909-596-3335 www.iscengineering.com www.overmoldtooling.com	
		TOLERANCES:		DRAWN	R FIERRO		02/12/10
		FRACTIONAL \pm		CHECKED			
		ANGULAR: MACH \pm BEND \pm		ENG APPR.			
		TWO PLACE DECIMAL \pm		MFG APPR.			
		THREE PLACE DECIMAL \pm		Q.A.			
		MATERIAL --		COMMENTS:		Standard Strain Relief 1461080-200-B-310-440-0	
NEXT ASSY	USED ON	FINISH --					
APPLICATION		DO NOT SCALE DRAWING		SIZE	DWG. NO.	REV.	
				A	1467103		
				SCALE: 5:1	WEIGHT:	SHEET 1 OF 1	

ISC ENGINEERING
CONTROLLED COPY
 Rich Fierro 06/09/2016