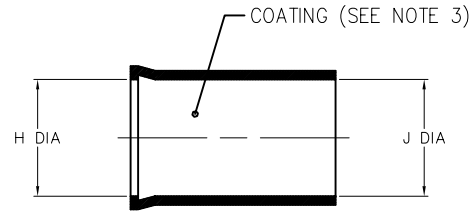


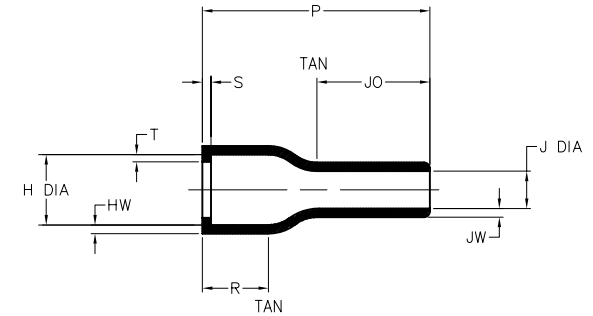
NOTES

1. ALL DIMENSIONS ARE IN $\frac{\text{INCHES}}{[\text{MILLIMETERS}]}$
2. DIMENSIONS APPEARING IN TABLE ARE AS FOLLOWS:
 - a - AS SUPPLIED
 - b - AFTER UNRESTRICTED RECOVERY
3. COATING (ADHESIVE): AS SUPPLIED DIMENSIONS APPEARING IN TABLE ARE FOR UNCOATED PARTS. WHEN COATING IS ADDED, ENTRY DIAMETER WILL BE REDUCED BY .06 MAX.
4. SEE COMPATIBILITY CHART FOR MORE INFO.

REVISIONS		
LTR	DESCRIPTION	DATE
A	ECD-08-007623	03/26/2008



AS SUPPLIED



AFTER UNRESTRICTED RECOVERY

PART NUMBER	H		J		P	JO	R	S	T	HW	JW
	MIN	MAX	MIN	MAX	±10%	±10%	REF	REF	REF	±20%	±20%
	a	b	a	b	b	b	b	b	b	b	b
202D232-25-08/225	$\frac{1.16}{[29,5]}$	$\frac{.74}{[18,8]}$	$\frac{1.16}{[29,5]}$	$\frac{.33}{[8,4]}$	$\frac{1.65}{[41,9]}$	$\frac{.63}{[16,0]}$	$\frac{.48}{[12,2]}$	$\frac{.12}{[3,0]}$	$\frac{.04}{[1,0]}$	$\frac{.07}{[1,78]}$	$\frac{.045}{[1,14]}$

If this document is printed it becomes uncontrolled. Check for the latest revision

CUSTOMER DRAWING

MATERIAL DASH NO.	MATERIAL DESCRIPTION	RT SPEC	COATING NO.	COATING SPEC
-25	ELASTOMER, FLUID RESISTANT	RT-1325	/225	S-1206

UNLESS OTHERWISE SPECIFIED DIMENSIONS ARE INCHES. METRIC DIMENSIONS ARE IN BRACKETS.	DRAWN	DATE	 Raychem Molded Parts 305 Constitution Dr Menlo Park, CA 94025
	UNGUYEN	03/26/2008	
DECIMAL TOLERANCES	THIRD ANGLE PROJECTION		TITLE
.XXX ± 0.005 [0.13 mm]			BOOT, STRAIGHT, WITH LIP
.XX ± 0.01 [0.25 mm]			SIZE
.X ± 0.1 [0.50 mm]			B
ANGLE TOLERANCE			CODE IDENT. NO.
.X ± 1 DEG.			06090
© 2008 Tyco Electronics Corporation. All rights reserved.			DWG. NO.
			202D232-25-08/225
			DO NOT SCALE THIS DRAWING
			SHEET 1 OF 1