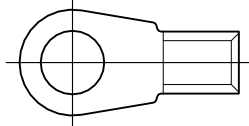


MATED WITH:
—
PROJECT NO: E97-52519

REVISIONS				
P	LTR	DESCRIPTION	DATE	APVD
	B3	ECN-22-146156	29MAR2022	RK CSD

TERMINAL LUG ACCORDING TO VG 96933-13:
KABELSCHUH ENTSPRECHEND VG 96933-13:



DRAWING NOT AT SCALE
DARSTELLUNG NICHT MAßSTÄBLICH

TERMINAL LUG VG 96933 T 13 A ____ A
KABELSCHUH

DASH-NO. PER VG TEILE-NR. NACH VG	AMP PART NO. AMP BESTELL-NR.	PACKING UNIT VERPACKUNGS- EINHEIT	
039	726 346-0	200	
040	726 346-1	200	
041	726 346-2	200	
042	726 346-3	150	OBSOLETE
043	726 346-4	125	OBSOLETE

PACKING:

BULK PACKAGING IN FOLDING BOX
PACKING UNIT: SEE TABLE

VERPACKUNG:

SCHÜTTGUT IN FALTSCHACHTEL
VERPACKUNGSEINHEIT: SIEHE TABELLE

TE Connectivity. All Rights Reserved.



DIMENSIONS: mm	DWN S.STOLZ	06-OCT-97	MATERIAL	-	FINISH	-
	CHK W.BOCK	06-OCT-97	TE Connectivity			
TOLERANCES UNLESS OTHERWISE SPECIFIED:	APVD G.FELDMEIER	06-OCT-97				
	0 PLC ± -	PRODUCT SPEC	NAME	TERMINAL LUG, AWG 2		
1 PLC ± -	VG 96933	KABELSCHUH, AWG 2				
2 PLC ± - n. ISO 8015	APPLICATION SPEC	SIZE	CAGE CODE	DRAWING NO	RESTRICTED TO	
3 PLC ± - n. ISO 2768 - mH - E	VG 96933	A4	00779	C-726346	-	
4 PLC ± -	WEIGHT	-				
ANGLES ± -	CUSTOMER DRAWING		SCALE	-	SHEET 1 OF 1	REV B3

