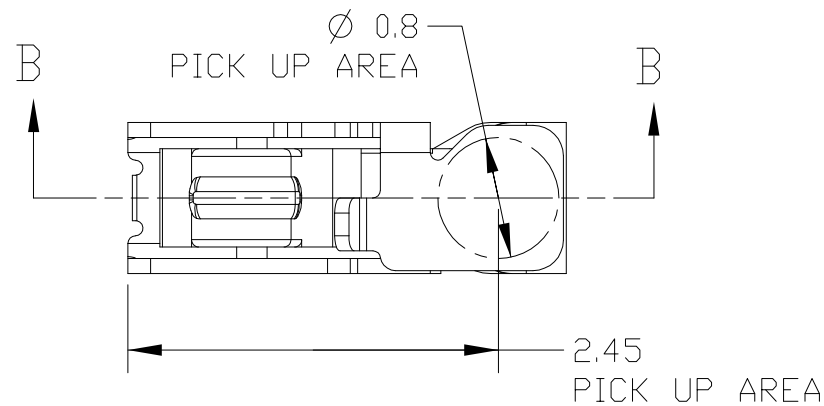
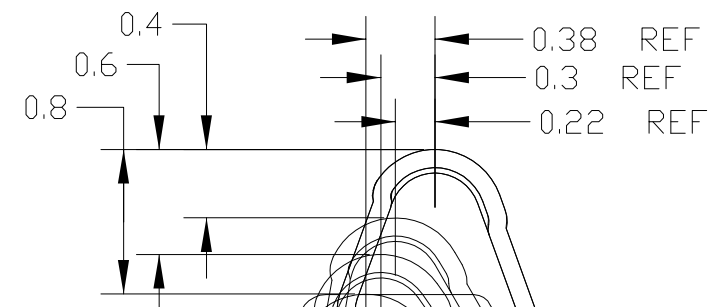


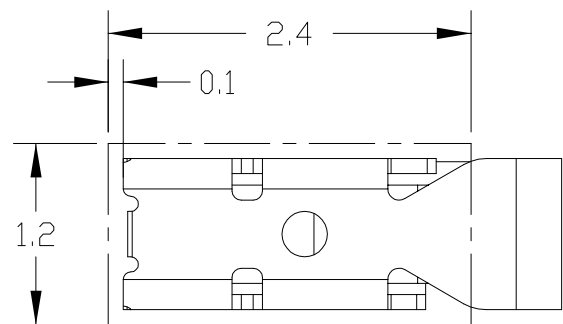
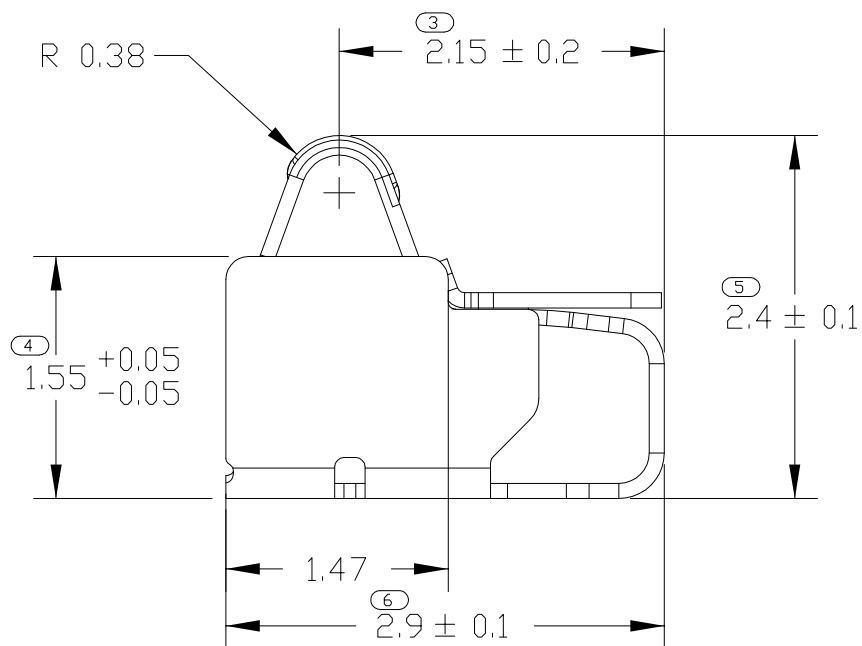
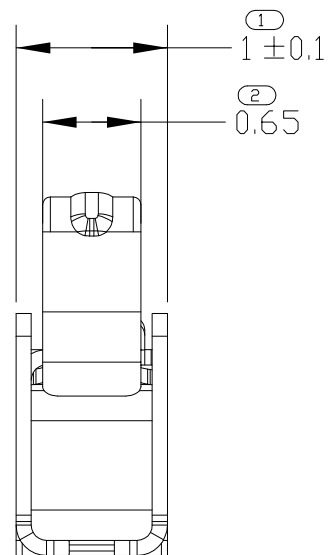
P	LTR	DESCRIPTION	DATE	DWN	APVD
	A	RELEASED	16MAY2013	IC.K	JH.K
	B	REVISED	03JUNE2013	IC.K	JH.K
	C	REVISED	10JUNE2013	IC.K	JH.K
	C1	REVISED	25FEB2014	IC.K	JH.K



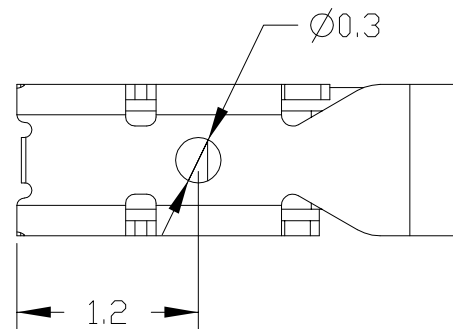
AS SHOWN
 ① 2108613-5/6
 ② 2-2108613-6



SECTION B-B
 STROKE CONDITION(REFERENCE)



RECOMENDED PCB LAYOUT
 (REFERENCE)



- ① MATERIAL: TICU(COPPER ALLOY), THK.= 0.1
- ② FINISH: Ni UNDER PLATING ALL OVER 0.8~3.0um
 CONTACT PLATING: Au 0.1~0.4um
 SOLDER PLATING: Au 0.05~0.35um
- ③ CUTTING BURR: 0.05mm MAX.
- ④ F/G SHOULD BE SAPERATED BASED ON THE CUSTOMER'S PART NUMBER AS BELOW TABLE

①

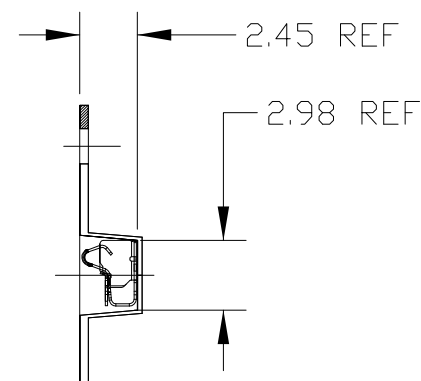
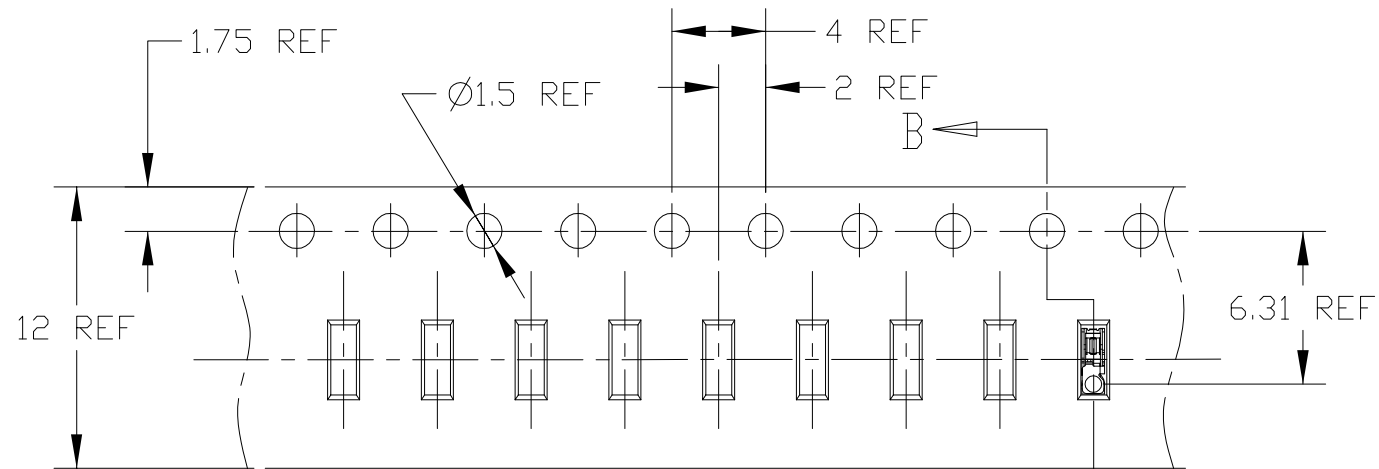
②

NO	PART NUMBER	CUSTOMER PART NUMBER	PRODUCT SPEC
1	2108613-5	MBV62561601	108-61188
2	2108613-6	EAG63652101	
3	2-2108613-6	-	108-61253

THIS DRAWING IS A CONTROLLED DOCUMENT.		DWN JH GONG 08FEB2013			
DIMENSIONS: mm		CHK JH KIM 08FEB2013			
TOLERANCES UNLESS OTHERWISE SPECIFIED: ±0.15		APVD JH KIM 08FEB2013			
0-PLC ± 1-PLC ±0.5 2-PLC ±0.13 3-PLC ±0.013 4-PLC ±0.0001 ANGLES ±		PRODUCT SPEC SEE TABLE ④	NAME SPRING FINGER 2.4H		
MATERIAL ①		APPLICATION SPEC -	SIZE A3	CAGE CODE 00779	DRAWING NO C-2108613
FINISH ②		WEIGHT -	RESTRICTED TO -		
CUSTOMER DRAWING			SCALE 20:1	SHEET 1 OF 3	REV C2

P	LTR	DESCRIPTION	DATE	DWN	APVD
		SEE SHEET 1			

① 4 <2108613-5 : FOR MBV62561601>



DIRECTION OFF TOP OF REEL

SECTION B-B

①

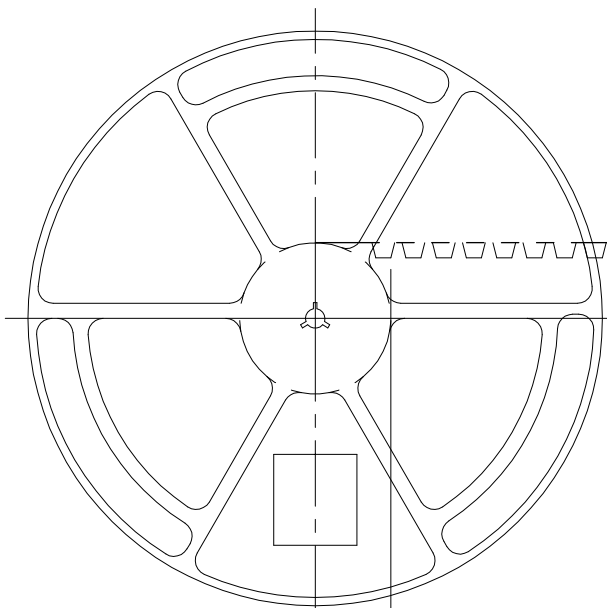
MBV62561601-YYYYMMDD-*****-HK000120
SPEC: 2.4H SPRING FINGER WITH EMBOSS
Company Name: TE CONNECTIVITY
Tyco Part Number : 2108613-5

RoHS H/F

- 1. LG PART NO.
- 2. FINAL INSPECTION(YYYMMDD)
- 3. VENDOR PRODUCTION LOT NO.
- 4. VENDOR CODE

Ø100 REF
FLANGE CORE DIA.

Ø330 REF
REEL DIA.



WEEDING THE COVER TAPE.
AROUND THE OUTER PERIPHERY IN
A TURN

165° ~ 180°
PEELING ANGLE
0.1~1.0N
PEELING FORCE

WITH PRODUCT CHARGE
6000EA/1REEL

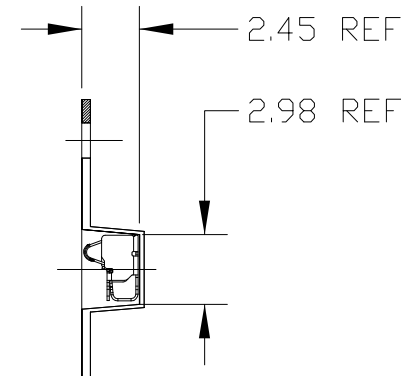
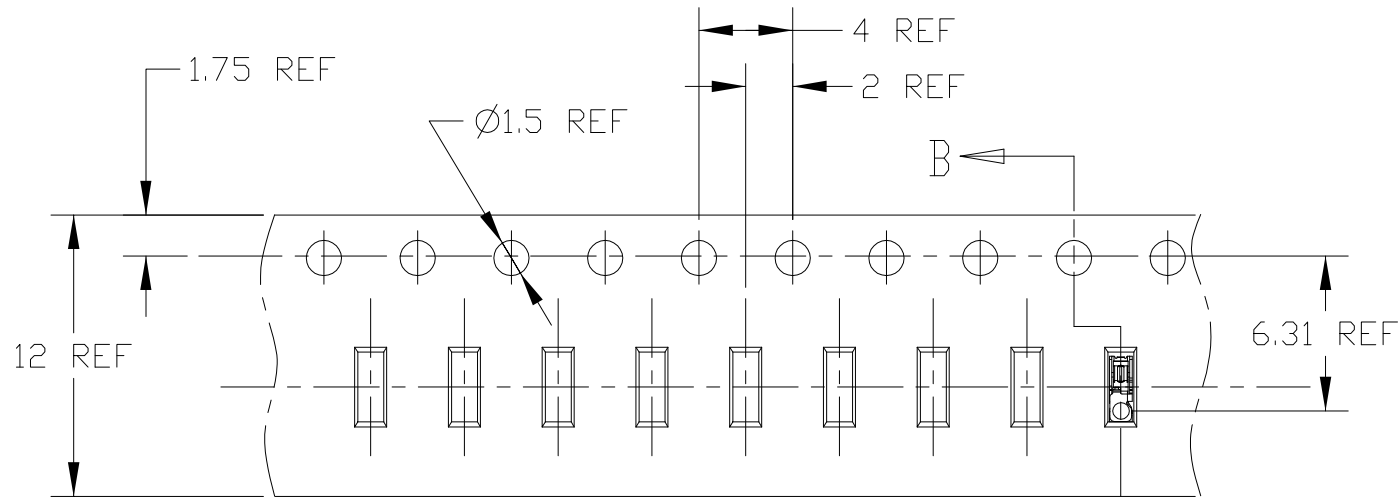
WITHOUT CHARGE
400mm REF.

160mm REF
WITHOUT CHARGE

THIS DRAWING IS A CONTROLLED DOCUMENT.		DWN JH GONG 08FEB2013	TE Connectivity NAME SPRING FINGER 2.4H						
DIMENSIONS: mm		CHK JH KIM 08FEB2013				SIZE	CAGE CODE	DRAWING NO	RESTRICTED TO
TOLERANCES UNLESS OTHERWISE SPECIFIED: ±0.15		APVD JH KIM 08FEB2013				A3	00779	C-2108613	-
0-PLC ± 1-PLC ±0.5 2-PLC ±0.13 3-PLC ±0.013 4-PLC ±0.0001 ANGLES ± FINISH -		PRODUCT SPEC 108-XXXXX				SCALE 20:1		SHEET 2 OF 3	REV C2
MATERIAL -		WEIGHT -	CUSTOMER DRAWING						

P	LTR	DESCRIPTION	DATE	DWN	APVD
		SEE SHEET 1			

① 4 <2108613-6 : FOR EAG63652101>



DIRECTION OFF TOP OF REEL

SECTION B-B

①

STE

EAG63652101-YYYYMMDD-*****-HK000120

SPEC: 2.4H SPRING FINGER WITH EMBOSS

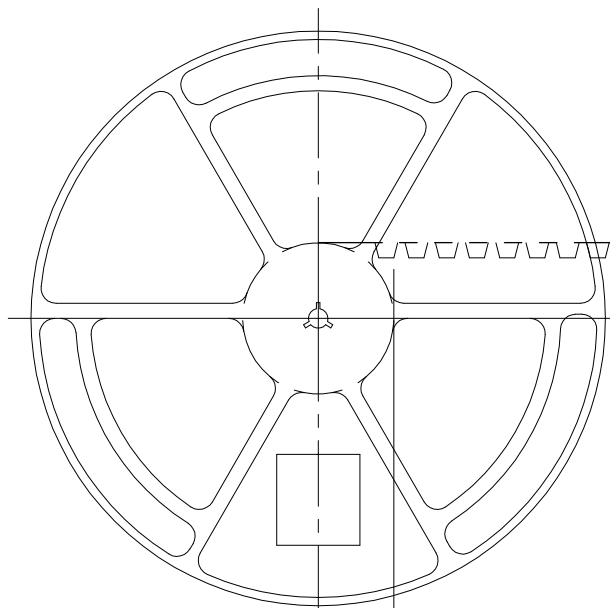
Company Name: TE CONNECTIVITY
Tyco Part Number : 2108613-5

RoHS
H/F

- 1. LG PART NO. 2. FINAL INSPECTION(YYYMMDD)
- 3. VENDOR PRODUCTION LOT NO. 4. VENDOR CODE

Ø100 REF
FLANGE CORE DIA.

Ø330 REF
REEL DIA.



WEEDING THE COVER TAPE.
AROUND THE OUTER
PERIPHERY IN
A TURN

165°~180°
PEELING ANGLE
0.1~1.0N
PEELING FORCE

WITH PRODUCT CHARGE
6000EA/1REEL

WITHOUT CHARGE
400mm REF.

160mm REF
WITHOUT CHARGE

13.4
19.4
REEL WIDTH

THIS DRAWING IS A CONTROLLED DOCUMENT.		DWN JH GONG 08FEB2013		STE TE Connectivity	
		CHK JH KIM 08FEB2013			
		APVD JH KIM 08FEB2013		NAME	
DIMENSIONS: mm 		TOLERANCES UNLESS OTHERWISE SPECIFIED: ±0.15 Ø-PLC ± 1-PLC ±0.5 2-PLC ±0.13 3-PLC ±0.013 4-PLC ±0.0001 ANGLES ± FINISH -		PRODUCT SPEC	
				APPLICATION SPEC	
MATERIAL -		108-XXXXX		SIZE	
		WEIGHT -		CAGE CODE	
		CUSTOMER DRAWING		DRAWING NO	
		SCALE 20:1		RESTRICTED TO	
		SHEET 3 OF 3		REV C2	