

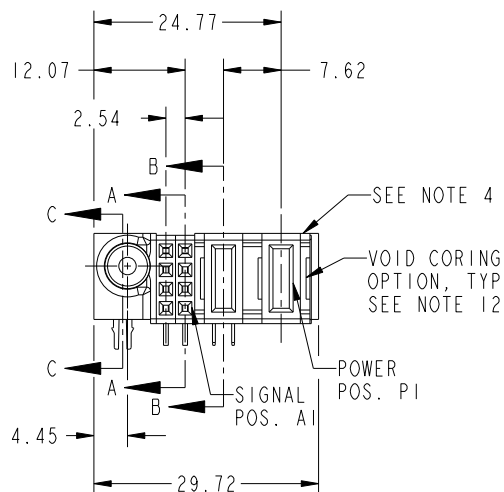
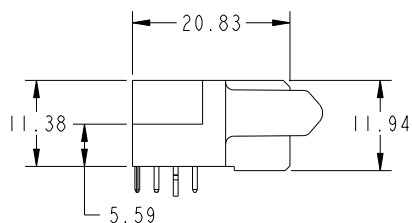
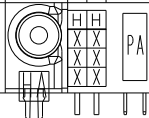
1

2

3

4

PRODUCT NO. 51915-472-- NOTE 3	ROWS D C B A	SIGNAL		POWER		
		E2	z 1	P2	P1	E1



CODE	DIM "M" MATING LENGTH	CONTACT TYPE
PA	[1.07]	POWER
H	[N/A]	SIGNAL
HA	[N/A]	HOLD-DOWN
X	OMITTED	OMITTED

spec ref	SEE NOTES			dr	Luo Weller	2014/11/19	projection 	MM ←→	size	A4	scale	1:1
tolerance std	TOLERANCES UNLESS OTHERWISE SPECIFIED			eng	Ruan MT	2014/12/17			ecn no	-		
SEE NOTES				chr	-	-			rel level	Released		
surface	linear	0.X	±0.50	FCI	www.fci.com	title	2ACP + 8S	dwg no	51915-472	rev	A	
SEE NOTES		0.XX	±0.25									
	0.XXX	±0.051										
	angular	0°	±2°	cat. no.	-	product family	PwrBlade	Product - Customer Drw		sheet 1 of 4		

Prod File - REV C - 2009-06-09

2

3

4

PDS: Rev :A

STATUS:Released

Printed: Dec 18, 2014



Copyright FCI.

1

2

3

4

A

B

C

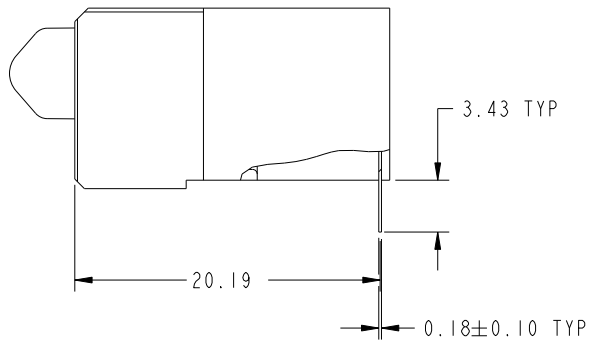
D

A

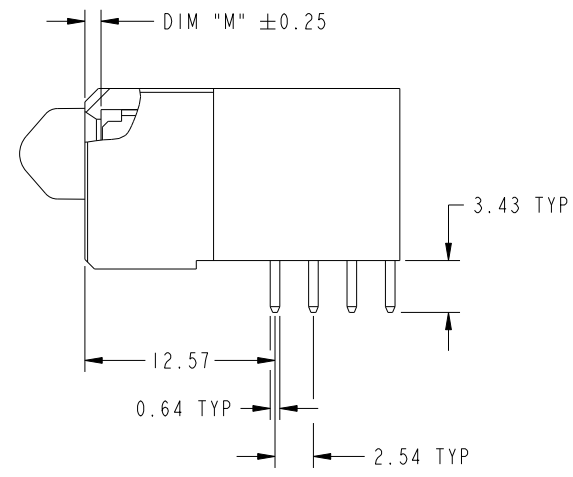
B

C

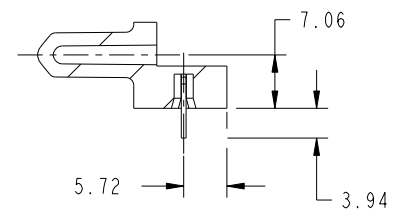
D



BROKEN-OUT SECTION A-A
SCALE 2:1



BROKEN-OUT SECTION B-B
SCALE 2:1



SECTION C-C

dr	Luo Weller	2014/11/19	projection 	MM ←————→	size	A4	scale	1:1
eng	Ruan MT	2014/12/17			ecn no	-		
chr	-	-			rel level	Released		
appr	Pei-Ming Zheng	2014/12/17	product family	PwrBlade	rev	A		
	title	2ACP + 8S R/A STB RECEPTACLE		dwg no	51915-472			
www.fci.com	cat. no.	-	Product - Customer Drw		sheet 2 of 4			

2

3

4



Copyright FCI.

1

2

3

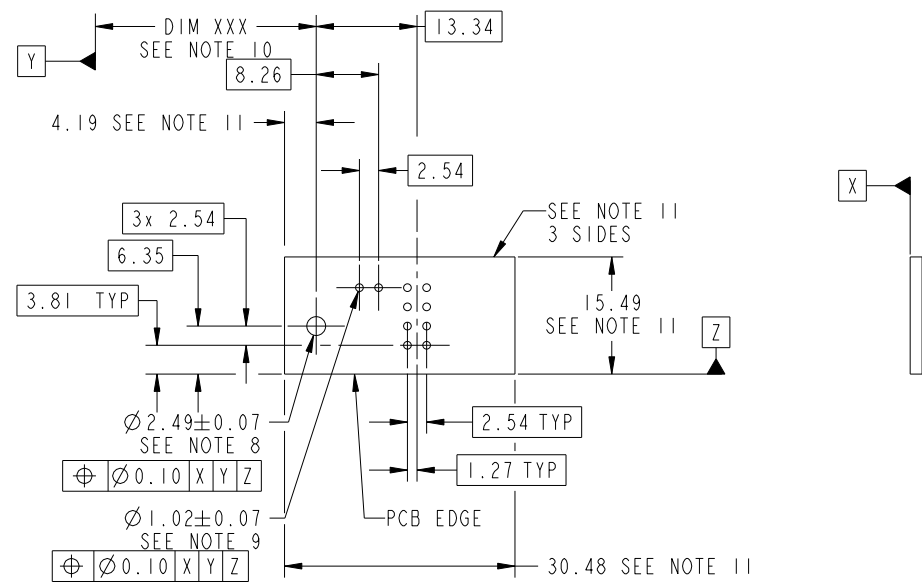
4

A

B

C

D



RECOMMENDED PCB LAYOUT



Copyright FCI.

dr	Luo Weller	2014/11/19	projection 	MM 	size	A4	scale	1:1
eng	Ruan MT	2014/12/17			ecn no	-		
chr	-	-			rel level	Released		
appr	Pei-Ming Zheng	2014/12/17	product family	PwrBlade	rel level	Released		
	title	2ACP + 8S R/A STB RECEPTACLE		dwg no	51915-472		rev	A
www.fci.com	cat. no.	-	Product - Customer Drw			sheet 3 of 4		

2

3

NOTES:

1. DIMENSIONS AND TOLERANCES ARE IN ACCORDANCE WITH ASME Y14.5M, 1994 UNLESS OTHERWISE SPECIFIED.

CONNECTOR NOTES:

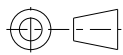
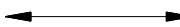

- ② HOUSING MATERIAL: UL 94 V-0 GLASS FILLED HIGH-TEMP THERMOPLASTIC
POWER CONTACT MATERIAL: COPPER ALLOY
SIGNAL PIN MATERIAL: COPPER ALLOY
- 3. SEE ITEM 5 & 6 IN PRINT 10064183 FOR PLATING SPEC OF 51915-472 AND 51915-472LF RESPECTIVELY.
- ④ MANUFACTURER'S NAME, P/N, AND DATE CODE TO APPEAR ON THIS SURFACE.
- 5. PRODUCT SPECIFICATION GS-12-149.
APPLICATION SPECIFICATION BUS-20-067.
- 6. PACKAGED IN TRAYS.

PCB NOTES:

- 7. ALL HOLE DIAMETERS ARE FINISHED HOLE SIZE.
- ⑧ MOUNTING HOLES, WHERE APPLICABLE, ARE UNPLATED.
- ⑨ $\varnothing 1.151 \pm 0.025$ DRILLED HOLES PLATED WITH
0.008 MIN SnPb OR Sn OVER 0.03
TO 0.08 Cu PLATING TO ACHIEVE
 $\varnothing 1.02 \pm 0.07$ HOLE.
- ⑩ "DIM XXX" TO BE DETERMINED BY THE CUSTOMER.
- ⑪ CONNECTOR KEEP-OUT ZONE.
- 12. THE VOID CORING IN BETWEEN POWER MODULES, SIGNAL MODULES AND END MODULES ARE OPTIONAL AND THE SHAPE MAY BE DIFFERENT FOR OPTIMIZE THE MOLDING PROCESS. THE VOID CORING WILL NOT EFFECT TO PRODUCT FUNCTION.



Copyright FCI.

dr	Luo Weller	2014/11/19	projection 	MM 	size	A4	scale	1:1	
eng	Ruan MT	2014/12/17			ecn no	-			
chr	-	-			rel level	Released			
appr	Pei-Ming Zheng	2014/12/17	product family	PwrBlade	rel level	Released			
		title	2ACP + 8S R/A STB RECEPTACLE		dwg no	51915-472		rev	A
www.fci.com	cat. no.	-	Product - Customer Drw			sheet 4 of 4			