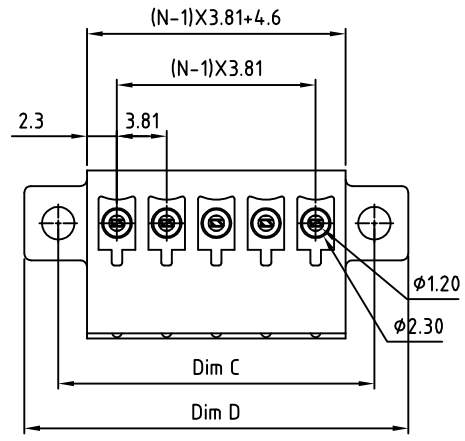
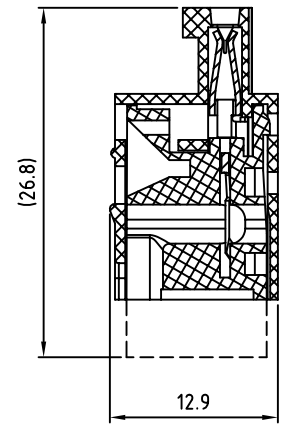
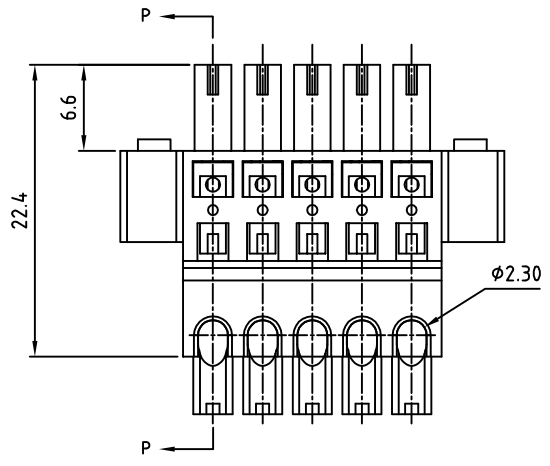


SIGN	DATE	DESCRIPTION	APPROVER
		THIS IS CAD DRAWING, DO NOT REVISE MANUALLY!!!	



- Material**
- Terminal body: Thermoplastic (UL94V-0)
  - Terminal lever: Thermoplastic (UL94V-0)
  - Female contact: PhBz (CuSn) Tin plated
  - Flange screw: Steel M2.5 zinc plated
- Electrical cULus**
- Voltage rating: 300VAC
  - Current rating: 5A
  - Wire range:
    - Solid wire(AWG): 20-22
    - Stranded wire(AWG): 20-22
  - Withstanding Voltage: 1.6KV
  - Operating temperature: -40°C to +115°C
  - Safety approval: cULus

RoHS Compliant



SECTION P-P

PART NUMBER:

**OSTHPXX3052**

No. of Poles  
 02: 2 Poles  
 :  
 :  
 24: 24 Poles

COLOR  
 0: Black  
 5: Green (Standard)  
 6: Blue  
 8: Grey

N = Number of poles  
 Dim A = (N-1) x 3.81 + 4.6  
 Dim B = (N-1) x 3.81  
 Dim C = (N-1) x 3.81 + 9.0  
 Dim D = (N-1) x 3.81 + 14.2

Poles	Tolerance	DIM A	DIM B
2pole ~ 6pole	±0.15	±0.15	
7pole ~ 12pole	±0.20	±0.20	
13pole ~ 18pole	±0.25	±0.25	
19pole ~ 24pole	±0.30	±0.30	

THESE DRAWINGS AND SPECIFICATIONS ARE THE PROPERTY OF ON-SHORE TECHNOLOGY, INC. AND SHALL NOT BE REPRODUCED, COPIED OR USED IN ANY MANNER WITHOUT THE PRIOR WRITTEN CONSENT OF ON-SHORE TECHNOLOGY, INC.



TITLE		OSTHP 3.81 Series with flange			
PART NO.	OSTHPXX3052	DWG NO.	OSTHPXX3052.DWG		
APPROVED	CHECKED	DESIGNED	DRAWN	CUST NO.	Tolerance
Runner 2011.07.14	Marvin 2011.07.14	Aaron 2011.07.14	Aaron 2011.07.14		X. ±0.50 X.X ±0.30 X.XX ±0.10 X* ±1*
				SHEET: 01/01	REV: C