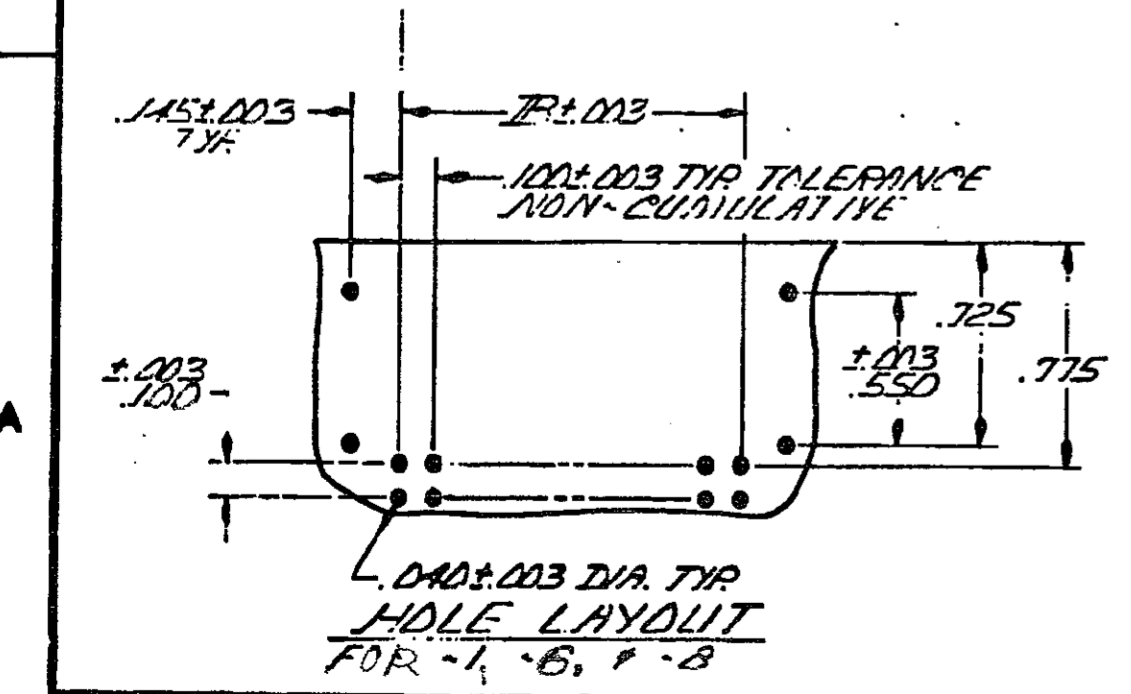
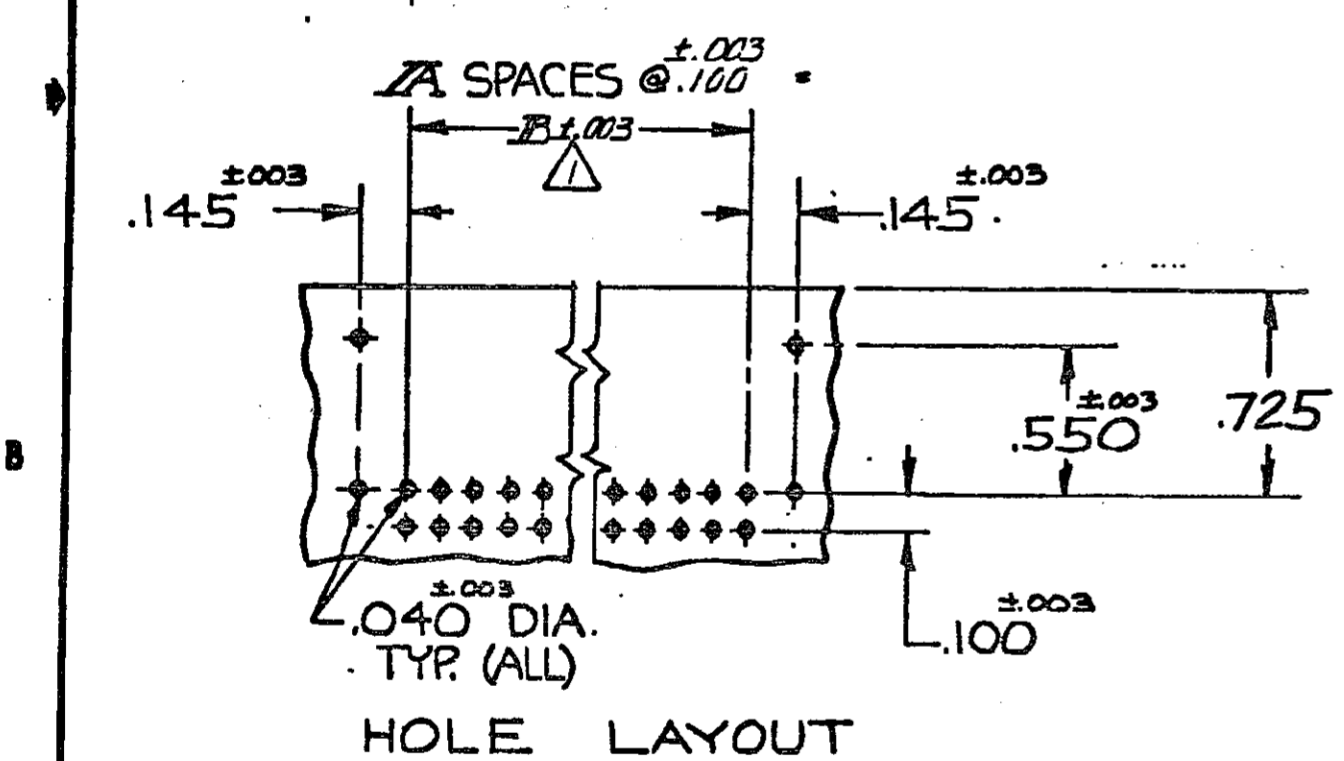
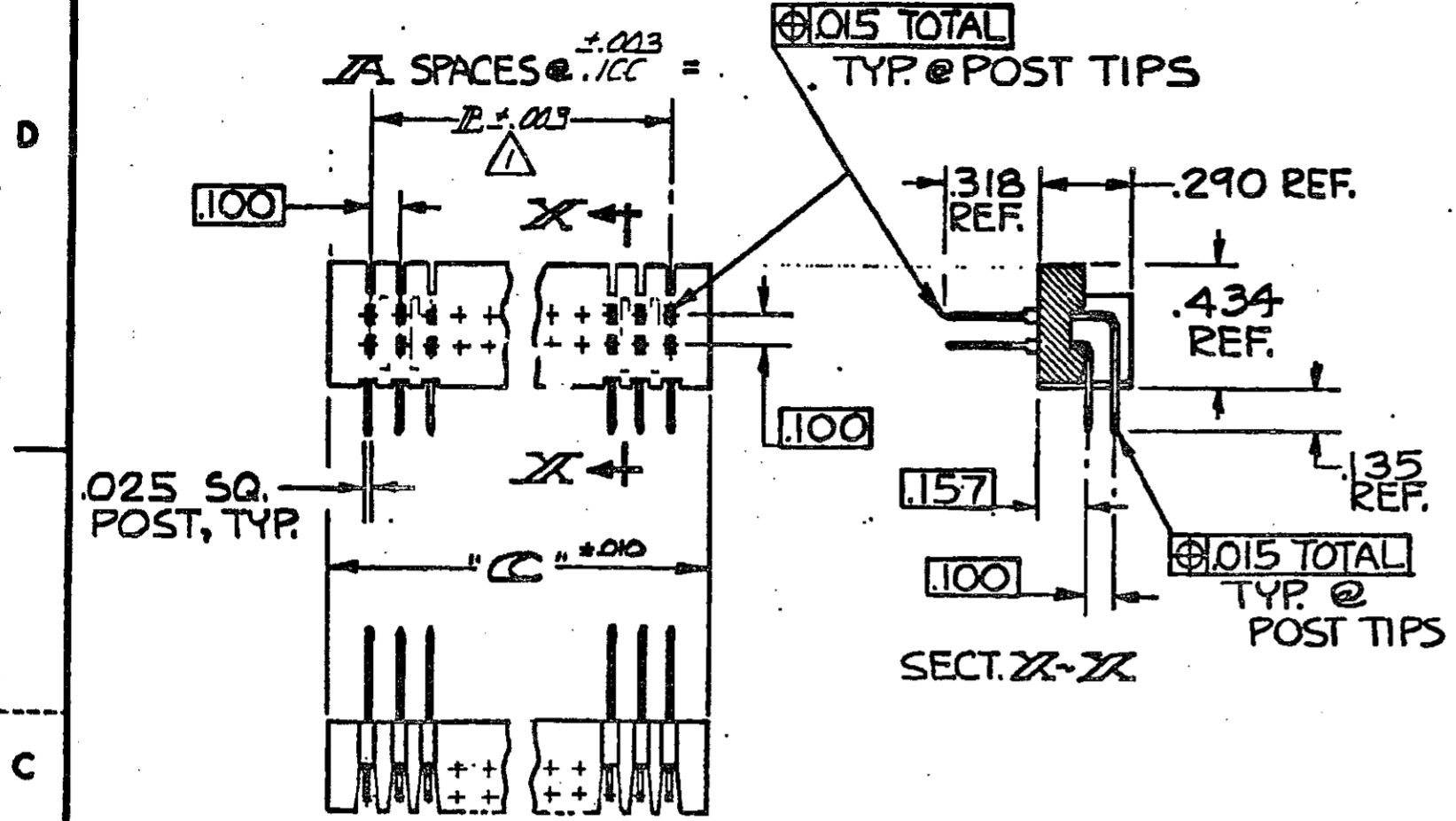


DRAWING MADE IN THIRD ANGLE PROJECTION

© COPYRIGHT 1981, 92 BY AMP INCORPORATED, HARRISBURG, PA. ALL INTERNATIONAL RIGHTS RESERVED. AMP INCORPORATED PRODUCTS COVERED BY U. S. AND FOREIGN PATENTS AND/OR PATENTS PENDING.

LOG AD 39

REVISIONS						
P	F	ZONE/LTR	DESCRIPTION	DATE	DWN	APVD
		L	REVISED PER ECO-15-008006	17NOV2015	NK	MM



USED WITH PART NUMBER	C DIM	B DIM	A SPACES	NUMBER OF POSITIONS	PART NUMBER
102791-7	1.830	1.600	16	34	1-102792-1
102791-5	3.120	2.900	29	61	1-102792-0
102791-1	1.430	1.200	12	26	-9
102791-2	.530	.300	3	8	-8
102791-3	.920	.700	7	16	102792-7
102791-1	.930	.200	2	6	102792-6
1-102791-0	1.130	.900	9	20	102792-5
102791-8	2.630	2.400	24	50	102792-4
102791-6	2.130	1.900	19	40	102792-3
102791-4	1.030	.800	8	18	102792-2
102791-2	.630	.400	4	10	102792-1

UNLESS OTHERWISE SPECIFIED DIMENSIONS ARE IN INCHES. TOLERANCES ON: DECIMALS ± .005 ANGLES ± .015 MATERIAL 156-FLAME RETARDANT THERMOPLASTIC, COLOR-BLACK. POSTS-COPPER ALLOY FINISH POSTS: .00050 GOLD IN CONTACT AREA, GOLD FLASH ON REMAINDER OF POST, .00050 NICKEL UNDERPLATE	CONTRACT NO DR CHG APPD APPD DSGN APPD OTHER APPD	TE Connectivity NAME ASSEMBLY, HEADER, AMPMODU, DOUBLE ROW, .100 & RIGHT ANGLE SIZE CODE IDENT NO DRAWING NO C 00779 102792 SCALE 2-1 SHEET 1 OF 1
	DR CHG APPD APPD DSGN APPD OTHER APPD	NAME ASSEMBLY, HEADER, AMPMODU, DOUBLE ROW, .100 & RIGHT ANGLE SIZE CODE IDENT NO DRAWING NO C 00779 102792 SCALE 2-1 SHEET 1 OF 1

AMP 1471-G REV 12-78

CUSTOMER DRAWING

102792