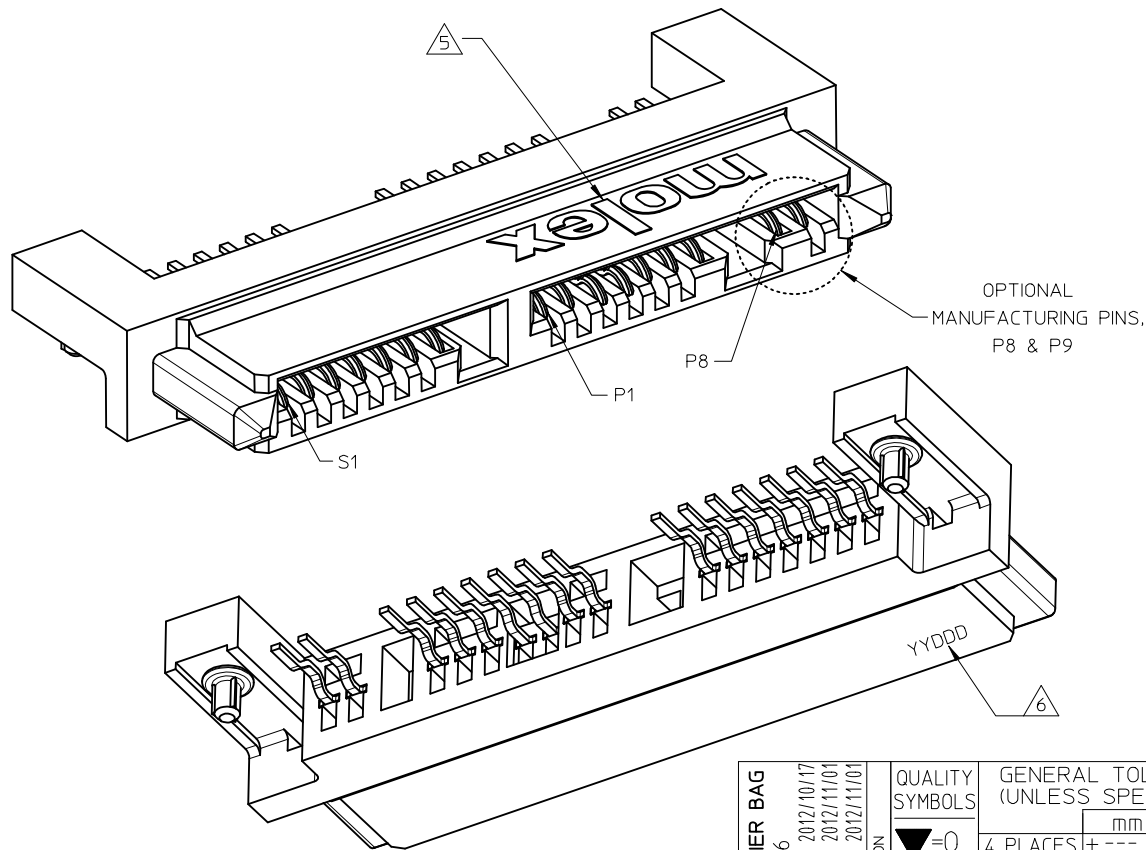
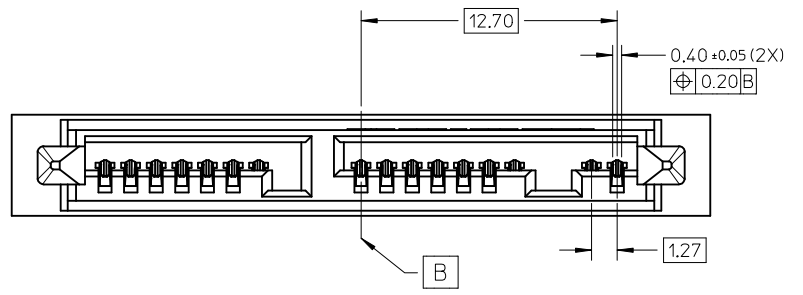
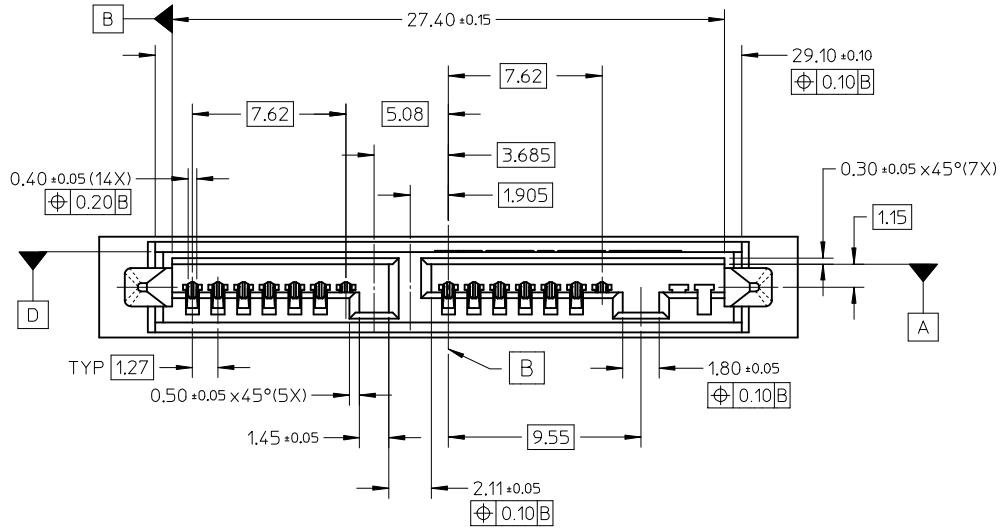


10	9	8	7	6	5	4	3	2	1
PART NUMBER	TOTAL PINS	DESCRIPTION		HOUSING MATERIAL		PACKAGING		REMARKS	
78109-0001	16	WITH OPTIONAL MANUFACTURING PINS (S1 TO S7 & P1 TO P9)		NYLON (PA) 9T, GLASS FILLED, UL 94V-0, BLACK.		TRAY		WITHOUT CAP	
78109-0012						TAPE AND REEL		WITH CAP	
78109-1001	14	WITHOUT OPTIONAL MANUFACTURING PINS (S1 TO S7 & P1 TO P7)				TRAY		WITHOUT CAP	
78109-1012						TAPE AND REEL		WITH CAP	

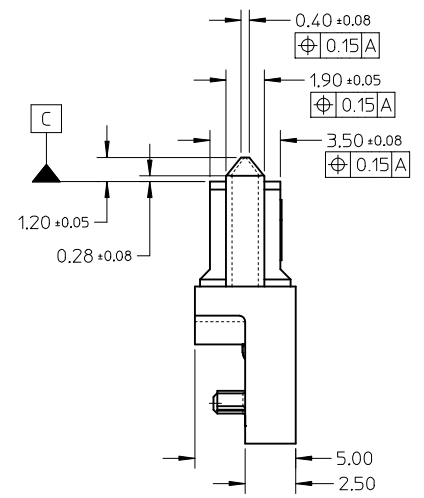
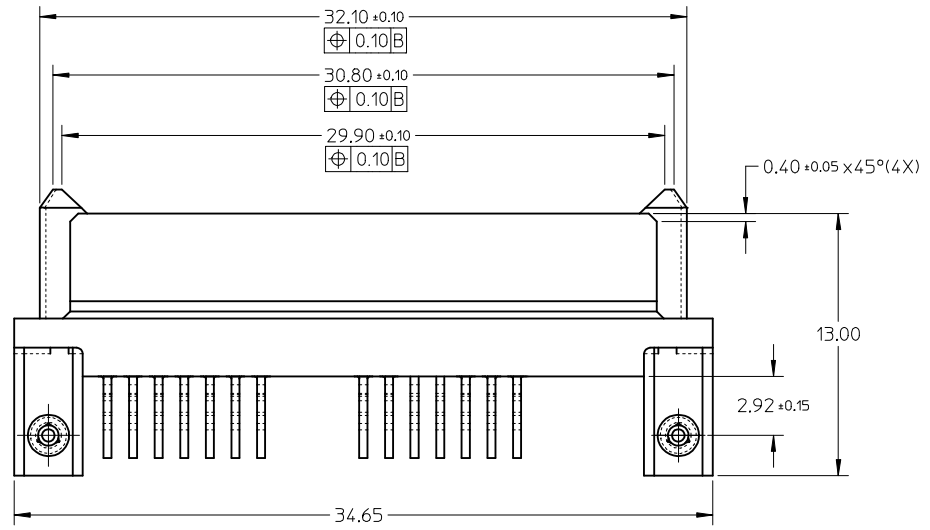


- NOTES:
- MATERIAL : SEE TABLE  
TERMINAL/LOCATING PIN : COPPER ALLOY
  - PLATING :  
TERMINAL : 0.764μm MIN. SELECTIVE GOLD OVER  
1.274μm MIN. NICKEL UNDERPLATE  
: 2.544μm MIN. TIN OVER  
1.274μm MIN. NICKEL UNDERPLATE  
LOCATING PIN : 3.814μm MIN. TIN OVER  
2.004μm MIN. NICKEL UNDERPLATE
  - PRODUCT SPECIFICATION : PS-78109-001
  - MATES WITH MICRO SATA PLUG SERIES : 78283
  - MOLEX LOGO LOCATED APPROXIMATELY AS SHOWN
  - DATE CODE LOCATED APPROXIMATELY AS SHOWN
  - PACKAGING : SEE TABLE  
PARTS TO BE PACKED IN MOISTURE BARRIER BAG
  - THIS PRODUCT IS COMPLIANT TO RoHS DIRECTIVE WITH THE FOLLOWING BANNED SUBSTANCES - LEAD, MERCURY, CADMIUM, HEXAVALENT CHROMIUM, POLYBROMINATED BIPHENYLS AND POLYBROMINATED DIPHENYLS ETHERS.
  - NON FUNCTIONAL CORING MAY VARY.

ADD MOIST BARRIER BAG EC NO: S2013-0226 DRWN:SKANG 2012/10/17 CHKD:ATSEE 2012/11/01 APPR:MLONG 2012/11/01	DESCRIPTION REV	QUALITY SYMBOLS	GENERAL TOLERANCES (UNLESS SPECIFIED)	DIMENSION STYLE	SCALE	DESIGN UNITS	THIRD ANGLE PROJECTION															
		$\nabla=0$ $\square=0$	<table border="1"> <thead> <tr> <th></th> <th>mm</th> <th>INCH</th> </tr> </thead> <tbody> <tr> <td>4 PLACES</td> <td>± ---</td> <td>± ---</td> </tr> <tr> <td>3 PLACES</td> <td>± ---</td> <td>± ---</td> </tr> <tr> <td>2 PLACES</td> <td>± 0.20</td> <td>± ---</td> </tr> <tr> <td>1 PLACE</td> <td>± ---</td> <td>± ---</td> </tr> </tbody> </table>		mm	INCH	4 PLACES	± ---	± ---	3 PLACES	± ---	± ---	2 PLACES	± 0.20	± ---	1 PLACE	± ---	± ---	MM ONLY	NTS	METRIC	
			mm	INCH																		
		4 PLACES	± ---	± ---																		
3 PLACES	± ---	± ---																				
2 PLACES	± 0.20	± ---																				
1 PLACE	± ---	± ---																				
	<table border="1"> <thead> <tr> <th></th> <th>DATE</th> <th>TITLE</th> </tr> </thead> <tbody> <tr> <td>DRAWN BY</td> <td>2006/06/27</td> <td rowspan="2">SERIAL ATA RECEPTACLE 1.8 INCH HDD RIGHT-ANGLE, SMT</td> </tr> <tr> <td>CHECKED BY</td> <td>2006/07/28</td> </tr> <tr> <td>APPROVED BY</td> <td>2006/07/28</td> <td rowspan="2">MOLEX INCORPORATED</td> </tr> <tr> <td>MATERIAL NO.</td> <td>SEE TABLE</td> </tr> </tbody> </table>		DATE	TITLE	DRAWN BY	2006/06/27	SERIAL ATA RECEPTACLE 1.8 INCH HDD RIGHT-ANGLE, SMT	CHECKED BY	2006/07/28	APPROVED BY	2006/07/28	MOLEX INCORPORATED	MATERIAL NO.	SEE TABLE	<table border="1"> <thead> <tr> <th>SIZE</th> <th>DOCUMENT NO.</th> <th>SHEET NO.</th> </tr> </thead> <tbody> <tr> <td>A3</td> <td>SD-78109-001</td> <td>1 OF 6</td> </tr> </tbody> </table>	SIZE	DOCUMENT NO.	SHEET NO.	A3	SD-78109-001	1 OF 6	
	DATE	TITLE																				
DRAWN BY	2006/06/27	SERIAL ATA RECEPTACLE 1.8 INCH HDD RIGHT-ANGLE, SMT																				
CHECKED BY	2006/07/28																					
APPROVED BY	2006/07/28	MOLEX INCORPORATED																				
MATERIAL NO.	SEE TABLE																					
SIZE	DOCUMENT NO.	SHEET NO.																				
A3	SD-78109-001	1 OF 6																				
DRAFT WHERE APPLICABLE MUST REMAIN WITHIN DIMENSIONS			THIS DRAWING CONTAINS INFORMATION THAT IS PROPRIETARY TO MOLEX INCORPORATED AND SHOULD NOT BE USED WITHOUT WRITTEN PERMISSION																			



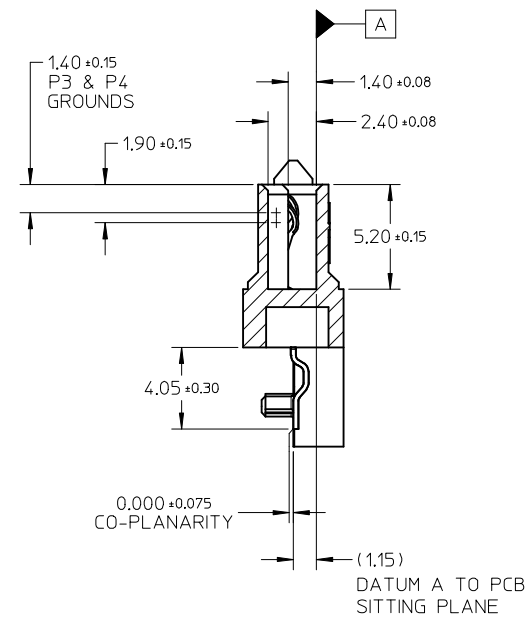
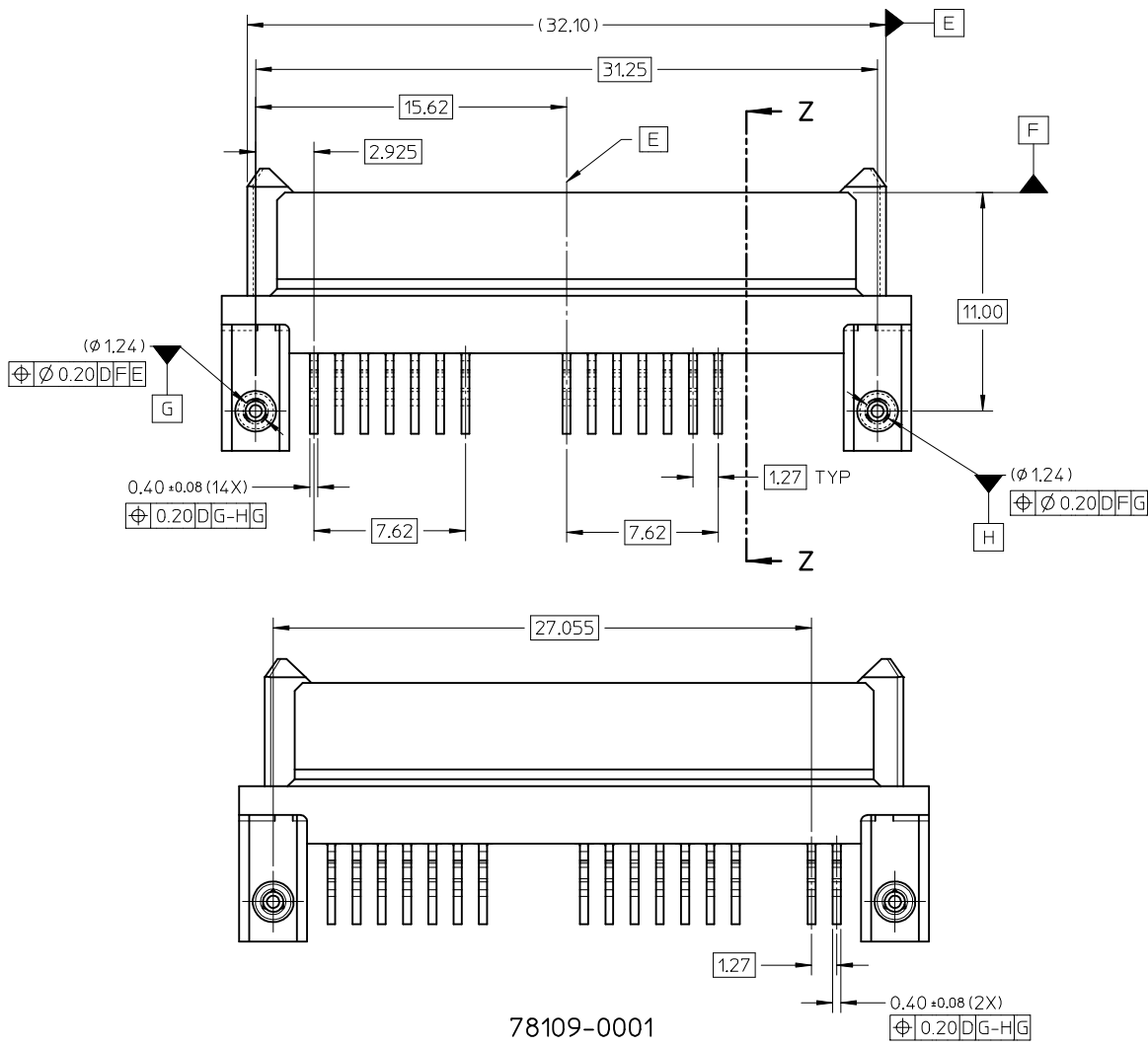
78109-0001



ADD MOIST BARRIER BAG EC NO: S2013-0226 DRWN:SKANG 2012/10/17 CHKD:ATSEE 2012/11/01 APPR:MLONG 2012/11/01	REV	A1	DESCRIPTION
	QUALITY SYMBOLS	▽=0	∠=0
	GENERAL TOLERANCES (UNLESS SPECIFIED)	mm	INCH
	4 PLACES	± ---	± ---
3 PLACES	± ---	± ---	
2 PLACES	± 0.20	± ---	
1 PLACE	± ---	± ---	
ANGULAR ± 3 °			
DRAFT WHERE APPLICABLE MUST REMAIN WITHIN DIMENSIONS			

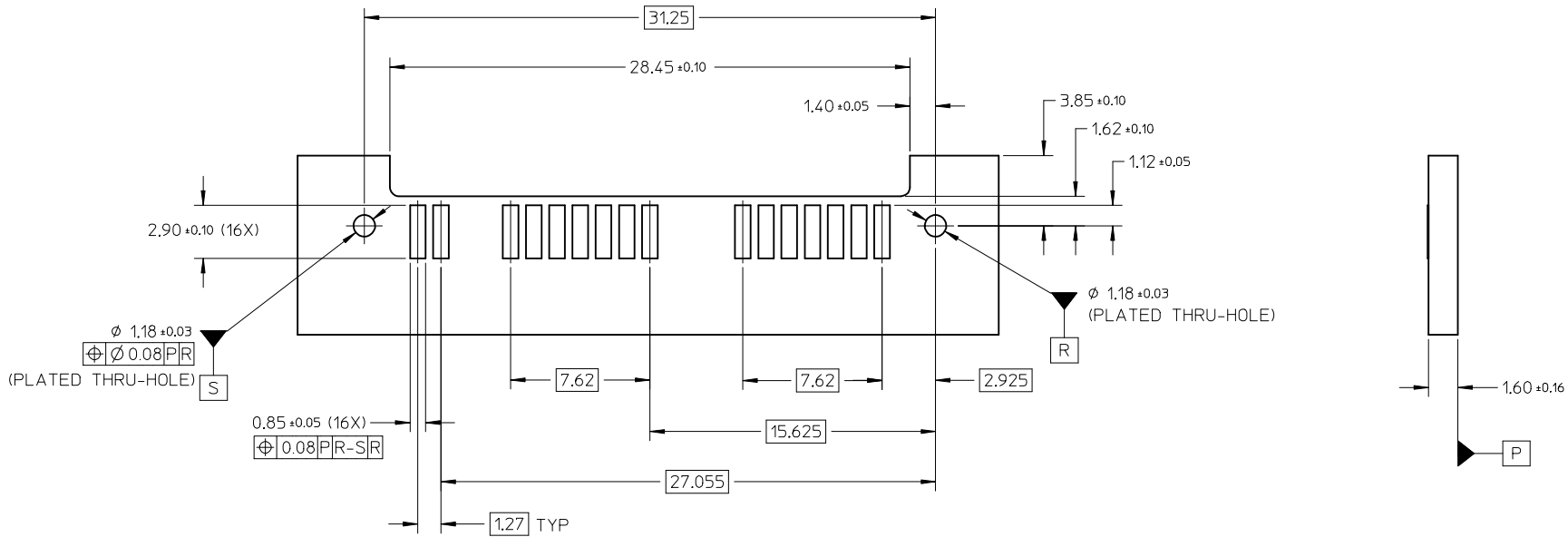
DRAWN BY	DATE	TITLE
YKOH	2006/06/27	SERIAL ATA RECEPTACLE 1.8 INCH HDD RIGHT-ANGLE, SMT
CHECKED BY	DATE	MOLEX INCORPORATED
SHONG	2006/07/28	
APPROVED BY	DATE	DOCUMENT NO.
KCLING	2006/07/28	SD-78109-001
MATERIAL NO.	SEE TABLE	SHEET NO.
SIZE	A3	2 OF 6

DIMENSION STYLE	SCALE	DESIGN UNITS	THIRD ANGLE PROJECTION
MM ONLY	NTS	METRIC	
THIS DRAWING CONTAINS INFORMATION THAT IS PROPRIETARY TO MOLEX INCORPORATED AND SHOULD NOT BE USED WITHOUT WRITTEN PERMISSION			



78109-0001

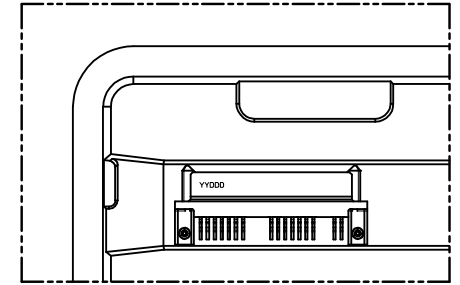
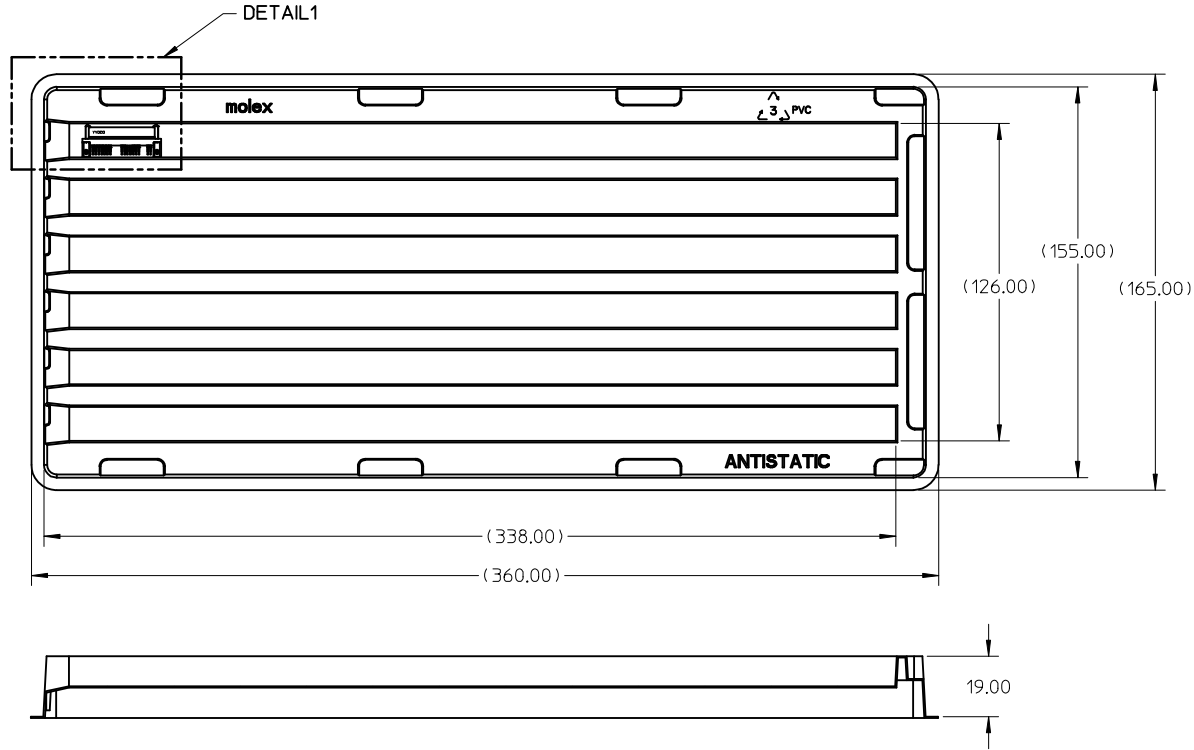
ADD MOIST.BARRIER BAG EC NO: S2013-0226 DRWN:SKANG 2012/10/17 CHKD:ATSEE 2012/11/01 APPR:MLONG 2012/11/01	QUALITY SYMBOLS ▽=0 ◻=0	GENERAL TOLERANCES (UNLESS SPECIFIED)		DIMENSION STYLE MM ONLY		SCALE NTS	DESIGN UNITS METRIC	THIRD ANGLE PROJECTION		
			mm	INCH	DRAWN BY	DATE	TITLE			
		4 PLACES	± ---	± ---	YKOH	2006/06/27	SERIAL ATA RECEPTACLE 1.8 INCH HDD RIGHT-ANGLE, SMT			
		3 PLACES	± ---	± ---	CHECKED BY	DATE				
	ANGULAR ± 3 °		APPROVED BY	DATE	MOLEX INCORPORATED DOCUMENT NO. SD-78109-001					
DRAFT WHERE APPLICABLE MUST REMAIN WITHIN DIMENSIONS			KCL ING	2006/07/28					SHEET NO.	
A1	REV	SEE TABLE		THIS DRAWING CONTAINS INFORMATION THAT IS PROPRIETARY TO MOLEX INCORPORATED AND SHOULD NOT BE USED WITHOUT WRITTEN PERMISSION						



RECOMMENDED PCB LAYOUT

ADD MOIST.BARRIER BAG EC NO: S2013-0226 DRWN:SKANG 2012/10/17 CHKD:ATSEE 2012/11/01 APPR:MLONG 2012/11/01	DESCRIPTION REV	QUALITY SYMBOLS	GENERAL TOLERANCES (UNLESS SPECIFIED)		DIMENSION STYLE MM ONLY		SCALE NTS	DESIGN UNITS METRIC	THIRD ANGLE PROJECTION		
		▼=0 ◻=0	mm	INCH	DRAWN BY YKOH	DATE 2006/06/27	TITLE SERIAL ATA RECEPTACLE 1.8 INCH HDD RIGHT-ANGLE, SMT				
			4 PLACES ± --- ± ---	3 PLACES ± --- ± ---	CHECKED BY SHONG	DATE 2006/07/28	MOLEX INCORPORATED				
			2 PLACES ± 0.20 ± ---	1 PLACE ± --- ± ---	APPROVED BY KCLING	DATE 2006/07/28	DOCUMENT NO. SD-78109-001				
A1			ANGULAR ± 3 °		MATERIAL NO. SEE TABLE		SHEET NO. 4 OF 6				
			DRAFT WHERE APPLICABLE MUST REMAIN WITHIN DIMENSIONS		SIZE A3		THIS DRAWING CONTAINS INFORMATION THAT IS PROPRIETARY TO MOLEX INCORPORATED AND SHOULD NOT BE USED WITHOUT WRITTEN PERMISSION				

PACKAGING INFORMATION : TRAY



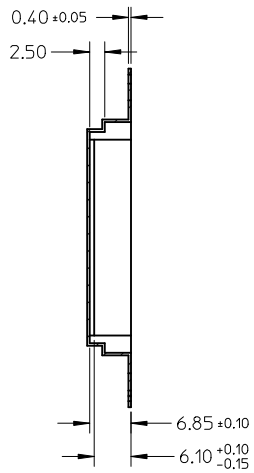
DETAIL1

NOTES:

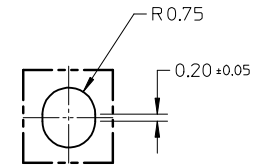
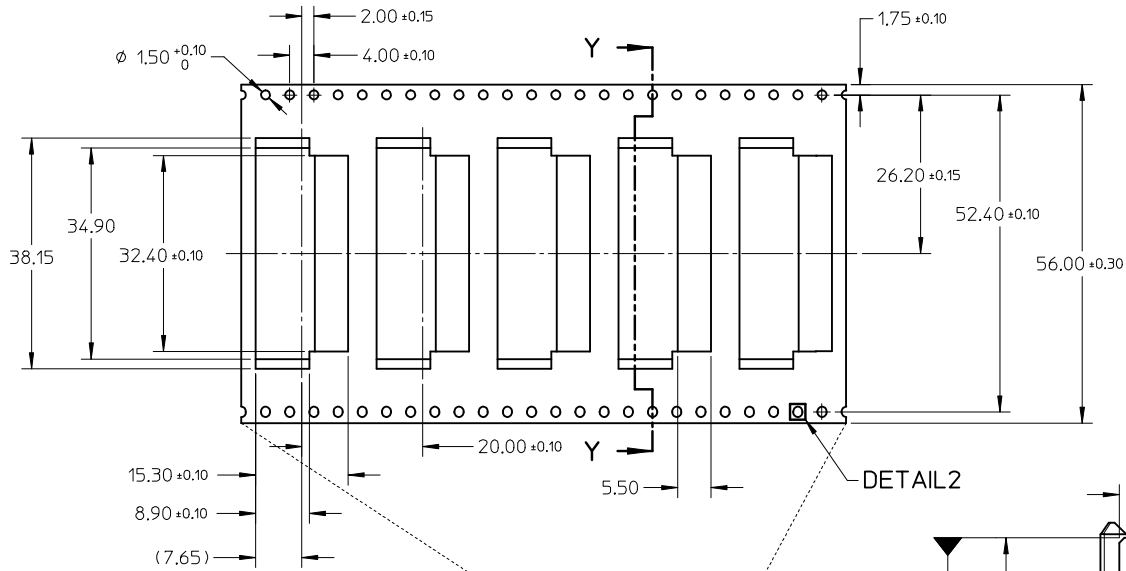
1. PACKAGING QUANTITY : 54 PCS PER TRAY
2. MATERIAL : PVC - CLEAR, ANTISTATIC  
0.70MM THICK (PRE-FORMED)

ADD MOIST BARRIER BAG EC NO: S2013-0226 DRWN:SKANG 2012/10/17 CHKD:ATSEE 2012/11/01 APPR:MLONG 2012/11/01	QUALITY SYMBOLS ▽=0 ◻=0	GENERAL TOLERANCES (UNLESS SPECIFIED)		DIMENSION STYLE MM ONLY		SCALE NTS	DESIGN UNITS METRIC	THIRD ANGLE PROJECTION		
			mm	INCH	DRAWN BY	DATE	TITLE			
		4 PLACES	± ---	± ---	YKOH	2006/06/27	SERIAL ATA RECEPTACLE 1.8 INCH HDD RIGHT-ANGLE, SMT			
		3 PLACES	± ---	± ---	CHECKED BY	DATE				
	± 0.20	± ---	SHONG	2006/07/28	MOLEX INCORPORATED					
2 PLACES	± ---	± ---	APPROVED BY	DATE						
1 PLACE	± ---	± ---	KCL ING	2006/07/28	DOCUMENT NO. SD-78109-001 SHEET NO. 5 OF 6					
ANGULAR ± 3 °		MATERIAL NO.		SEE TABLE						
DRAFT WHERE APPLICABLE MUST REMAIN WITHIN DIMENSIONS		SIZE		THIS DRAWING CONTAINS INFORMATION THAT IS PROPRIETARY TO MOLEX INCORPORATED AND SHOULD NOT BE USED WITHOUT WRITTEN PERMISSION						
A1	REV			A3						

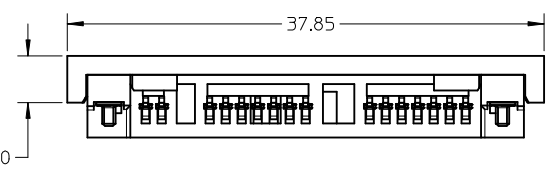
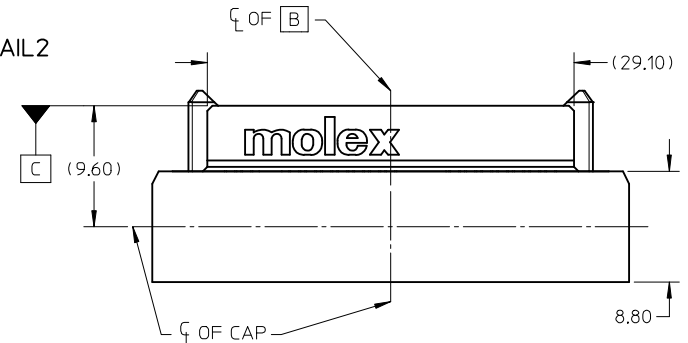
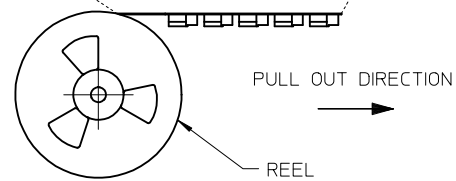
PACKAGING INFORMATION : TAPE & REEL



SECTION Y-Y

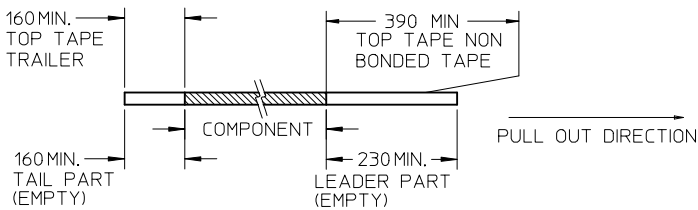


DETAIL 2

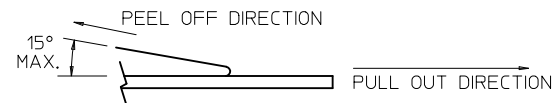


NOTES:

1. LEADER AND TRAILER TAPE



2. PEELING OFF FORCE OF THE TOP TAPE: 20 - 80gf. (PEELING DIRECTION AS SHOWN IN FOLLOWING FIGURE)



- 3. TAPE AND REEL SPECIFICATION IS AS PER EIA-481.
- 4. TAPE AND REEL QUANTITY : 480 PCS/ REEL.
- 5. THE TAPE IS TREATED FOR ANTI-STATIC.

ADD MOIST BARRIER BAG EC NO: S2013-0226 DRWN:SKANG CHKD:ATSEE APPR:MLONG 2012/10/17 2012/11/01 2012/11/01	QUALITY SYMBOLS ▽=0 ◻=0	GENERAL TOLERANCES (UNLESS SPECIFIED)		DIMENSION STYLE	SCALE	DESIGN UNITS	THIRD ANGLE PROJECTION	
				MM ONLY	NTS	METRIC		
				DRAWN BY	DATE	TITLE		
				CHECKED BY	DATE	SERIAL ATA RECEPTACLE		
		ANGULAR ± 3 °		APPROVED BY	DATE	MOLEX INCORPORATED		
		DRAFT WHERE APPLICABLE MUST REMAIN WITHIN DIMENSIONS		MATERIAL NO.	DOCUMENT NO.	SHEET NO.		
				SIZE	THIS DRAWING CONTAINS INFORMATION THAT IS PROPRIETARY TO MOLEX INCORPORATED AND SHOULD NOT BE USED WITHOUT WRITTEN PERMISSION			