

ITEM	MOLEX P/N	DESCRIPTION	QTY	UOM
A,B	2074580003	L1NK 396 Receptacle Housing -1X3	2	PC
C	2074590003	L1NK 396 TPA -1X3	2	PC
D	455703002	KKGen2 156 Tin/nickel Crimp 18-20 FORMED	6	PC
E	-	LABEL	1	PC

FROM	TO	CABLE DESCRIPTION	COLOR
A1	B3	18AWG PVC BK UL1015 HOOKUP WIRE	BLACK
A2	B2		
A3	B1		

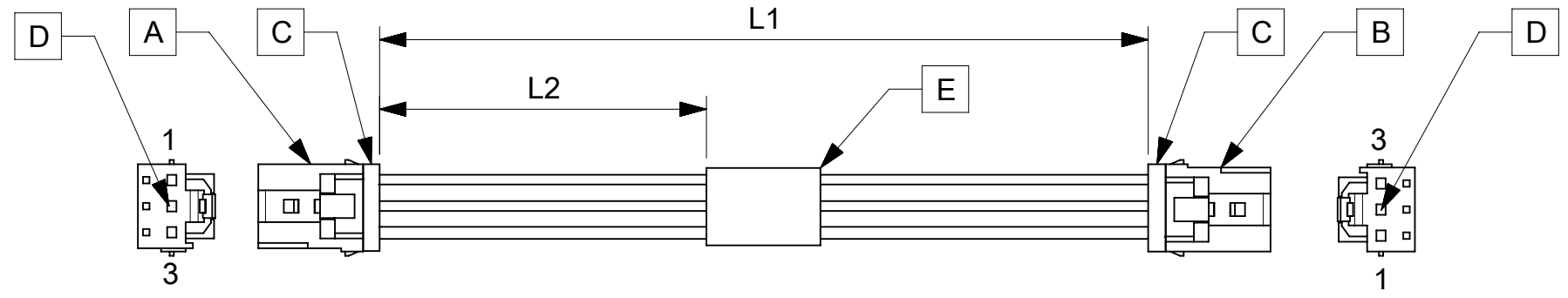


TABLE			
PART NUMBER	L1	L2	TITLE
369210300	75±5	25REF	Link396 3 Circuit 75MM
369210302	150±10	63REF	Link396 3 Circuit 150MM
369210303	300±15	138REF	Link396 3 Circuit 300MM
369210310	1000±20	488REF	Link396 3 Circuit 1000MM

- NOTES**
- Cable assembly must pass 100% continuity and polarity test.
 - Label text must be 2mm max. In height with Arial font.
 - Connector view shown is from mating side.

P/N:36921XXXX — MOLEX PN
 MOLEX
 BATCH WK/YR

DATE	REV	DESCRIPTION	REVISED BY
2019.03.27	A	INITIAL RELEASE	SSHIVASHANKA

THIS DRAWING CONTAINS INFORMATION THAT IS PROPRIETARY TO MOLEX ELECTRONIC TECHNOLOGIES, LLC AND SHOULD NOT BE USED WITHOUT WRITTEN PERMISSION											
SYMBOLS		DIMENSION UNITS		SCALE		CURRENT REV DESC:					
∇ = 0	mm	NTS		<p>molex</p> <p>SEE TABLE</p> <p>PRODUCT CUSTOMER DRAWING</p> <p>EC NO: 616867 DRWN: SSHIVASHANKA 2019/03/27 CHK'D: MNARAYAN01 2019/05/08 APPR: MNARAYAN01 2019/05/08</p> <p>INITIAL REVISION: DRWN: SSHIVASHANKA 2019/03/27 APPR: MNARAYAN01 2019/05/08</p> <p>DOCUMENT NUMBER: 369210300</p> <p>DOC TYPE: PSD DOC PART: 000 REVISION: A</p>							
∇ = 0	GENERAL TOLERANCES (UNLESS SPECIFIED)										
∇ = 0	ANGULAR TOL ± °										
∇ = 0	4 PLACES	±									
∇ = 0	3 PLACES	±									
∇ = 0	2 PLACES	±									
∇ = 0	1 PLACE	±									
∇ = 0	0 PLACES	±									
∇ = 0	DRAFT WHERE APPLICABLE MUST REMAIN WITHIN DIMENSIONS										
∇ = 0	THIRD ANGLE PROJECTION		DRAWING							SERIES	
		A4-SIZE		36921		SEE TABLE		GENERAL MARKET		SHEET NUMBER 1 OF 1	