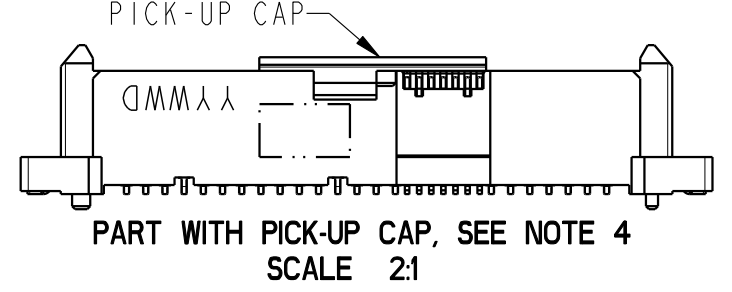
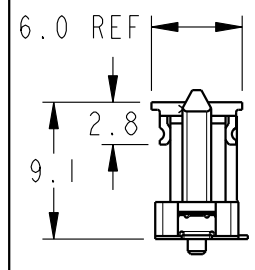
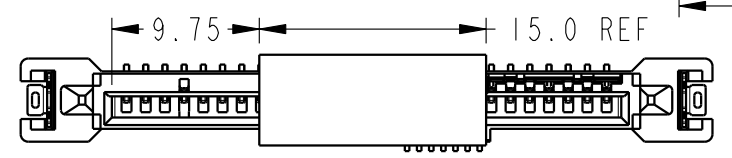
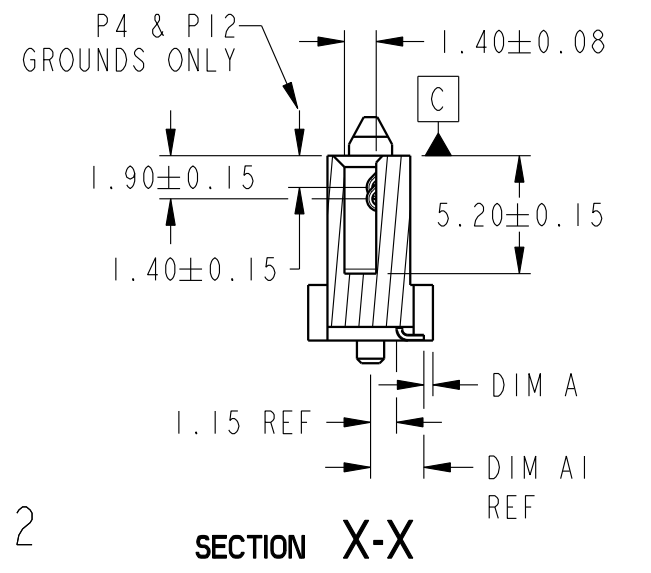
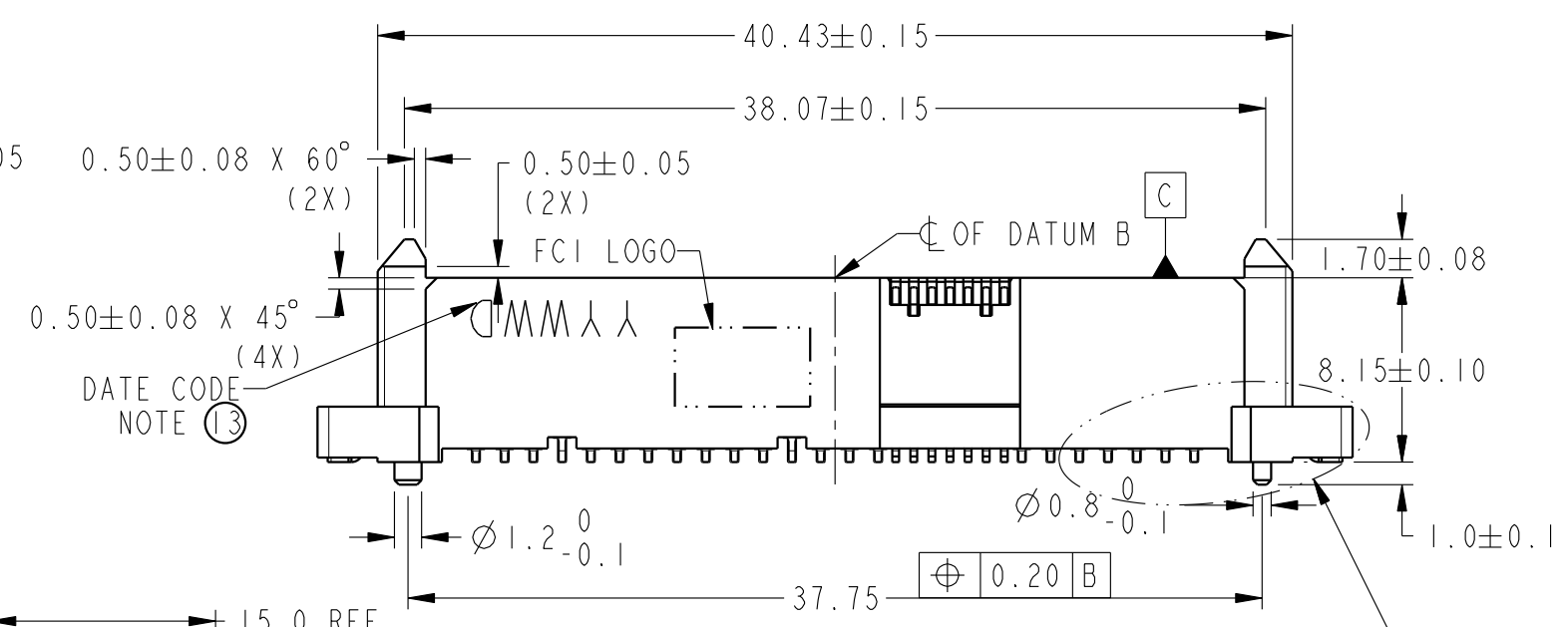
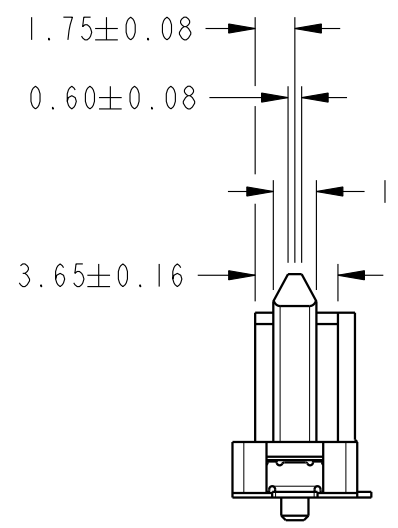
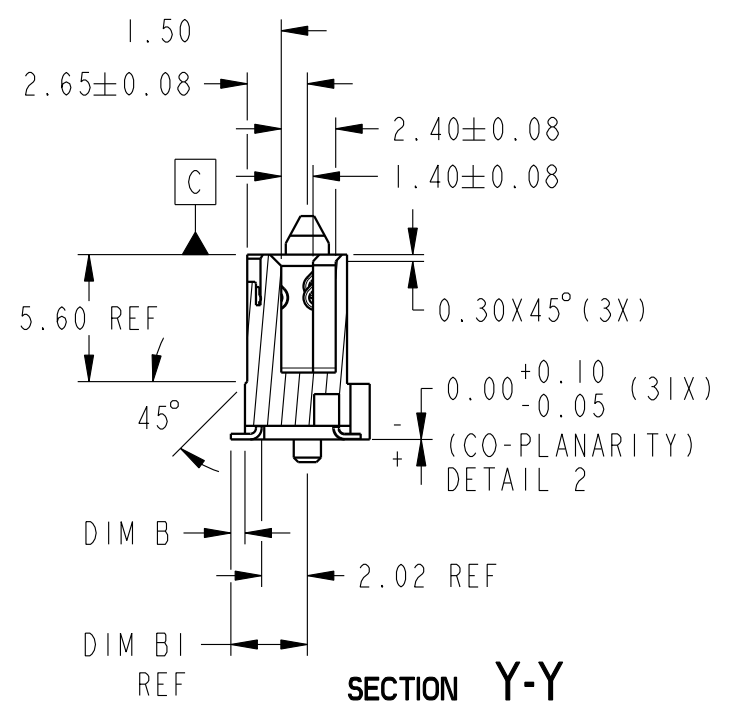
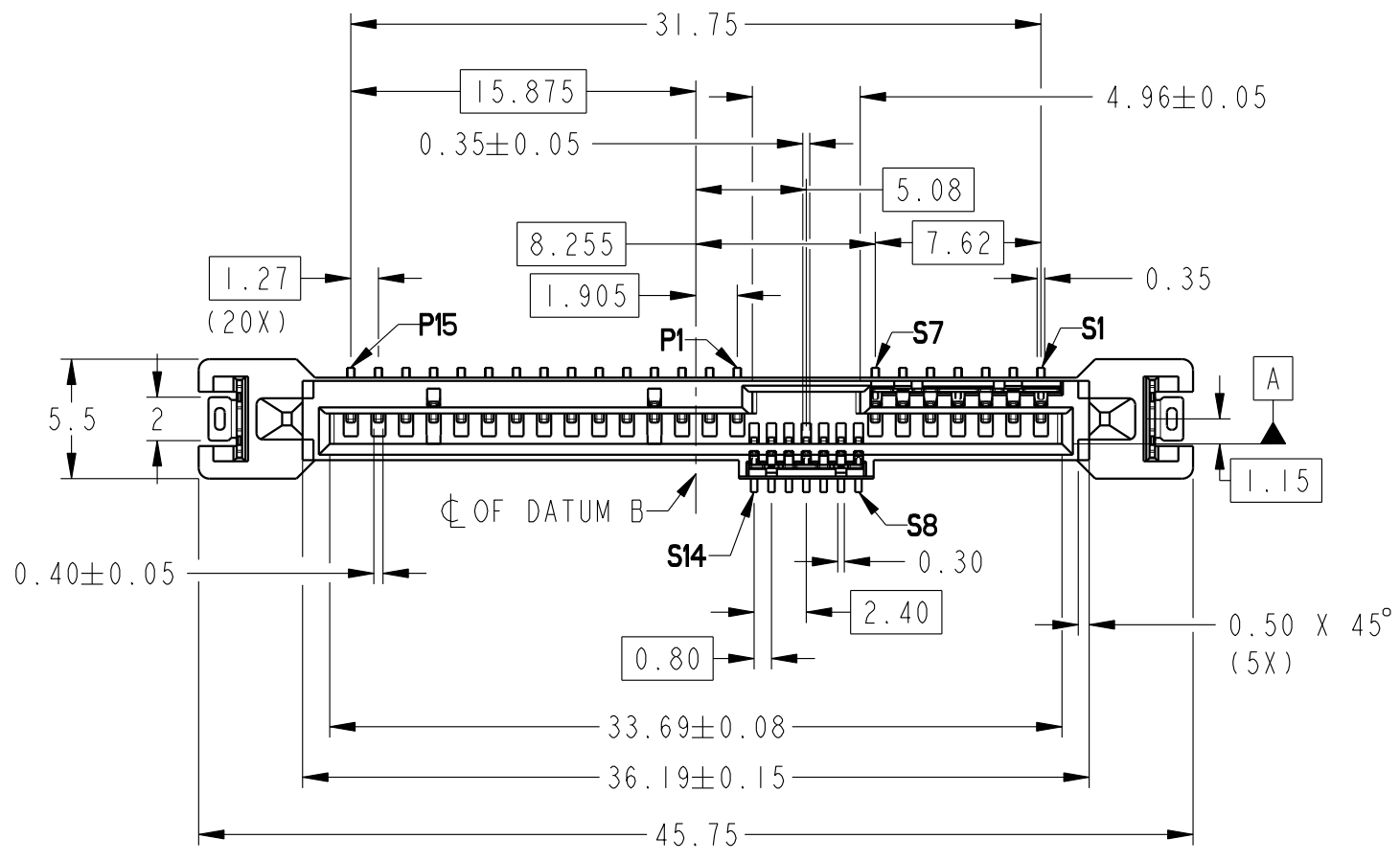


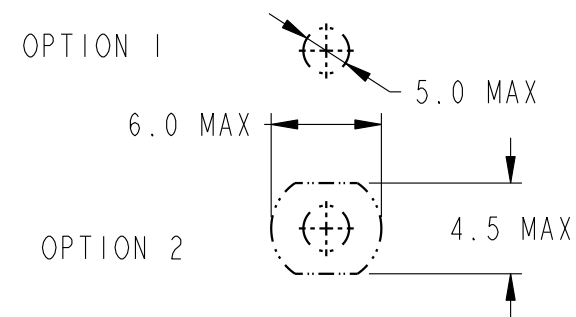
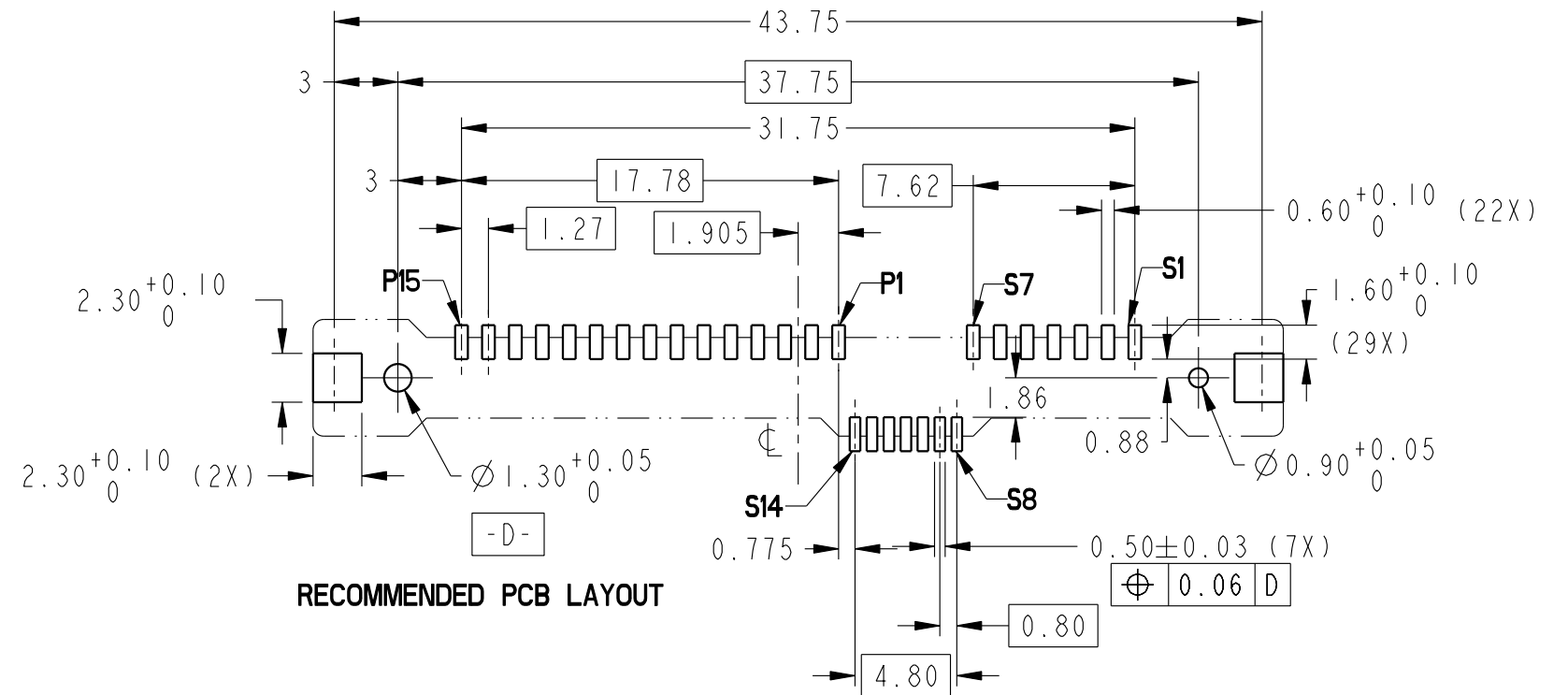
PRODUCT NUMBER
SEE TABLE



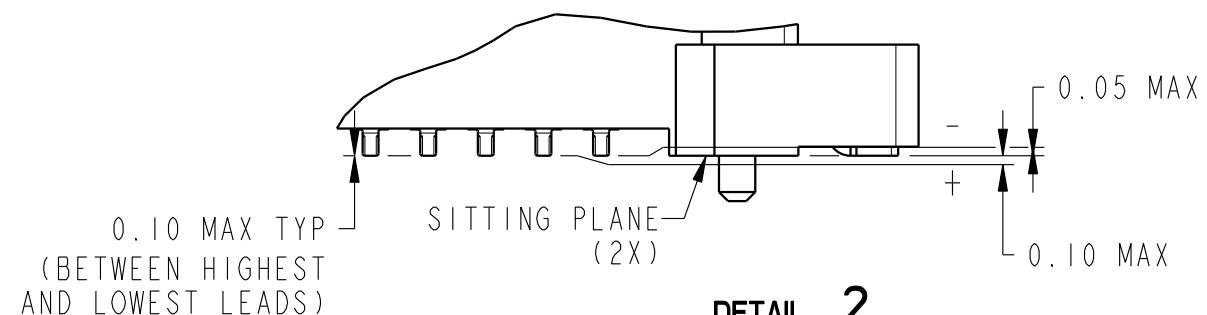
spec ref	-	dr	Noorhazlinda,	2017/08/14	projection	mm	size	A3	scale	3:1	
tolerance std	ISO 406 ISO 1101	eng	Noorhazlinda,	2017/09/12		←→	ecn no	-	rel level Released		
TOLERANCES UNLESS OTHERWISE SPECIFIED		chr	-	product family			SAS				
surface	linear	0.X	±	Amphenol FCI	12G SAS RECEPTACLE VERTICAL SMT TYPE ASSY			dwg no	10144871	rev	A
		0.XX	±0.20								
	0.XXX	±		cat. no.	-	Product - Customer Drw			sheet 1 of 3		
ISO 1302	angular	0°	±2°								

apppr	Koon-Poh Tay	2017/09/12	product family	SAS									
Amphenol FCI					12G SAS RECEPTACLE VERTICAL SMT TYPE ASSY			dwg no		10144871		rev	A
					cat. no.	-			Product - Customer Drw			sheet 1 of 3	

PRODUCT NUMBER	DIM A	DIM A1 REF	DIM B	DIM B1 REF	METAL CLIP	PLATING	PICK-UP CAP	PACKAGING	REMARKS
10144871-001LF	0.4	2.35	0.6	3.37	2 PCS	NOTE ②	NO	TRAY	NOTE ⑧
YES							NOTE ④ & ⑧		
10144871-001CLF							YES	TAPE & REEL	NOTE ④ ⑥ & ⑧
10144871-001C-TRLF	0.4	2.35	0.6	3.37	2 PCS	NOTE ②	NO	TRAY	NOTE ⑧
10144871-002LF							YES		TAPE & REEL
10144871-002-TRLF							YES	TAPE & REEL	NOTE ⑥ & ⑧



RECOMMENDED SUCTION HEAD SIZE




DETAIL 2
SCALE 6:1

spec ref	-	dr	Noorhazelinda,	2017/08/14	projection	mm	size	A3	scale	3:1
tolerance std	ISO 406 ISO 1101	eng	Noorhazelinda,	2017/09/12			ecn no	-	rel level	Released
TOLERANCES UNLESS OTHERWISE SPECIFIED		chr	-	apppr						
surface	linear	0.X	±-		12G SAS RECEPTACLE		dwg no	10144871	rev	A
		0.XX	±0.20		VERTICAL SMT TYPE ASSY					
	angular	0°	±2°		cat. no.	-				

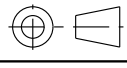

PRODUCT NUMBER
SEE TABLE

NOTES:

1. MATERIAL :
 - 1) HOUSING : HIGH TEMP THERMOPLASTIC, UL 94V-0
 - COLOR : BLACK
 - 2) TERMINAL : COPPER ALLOY
 - 3) HOLD DOWN : COPPER ALLOY
- ② FINISH :
 - 1) TERMINAL : 30μ" Au PLATING (CONTACT POINT) OVER 50μ" NICKEL
 - 2) SOLDER TAIL : 100μ" MIN Sn OVER 50μ" NICKEL
 - 3) HOLD DOWN : 100μ" MIN Sn OVER 50μ" NICKEL
3. PER SFF REV 1.1, EXCEPT 0.8mm PITCH BUMP AREA.
- ④ PART WITH PICK-UP CAP, P/N XXXXXXXX-XXXCLF.
- ⑤ THE STD PACKAGING IS IN TRAY UNLESS OTHERWISE SPECIFIED.
- ⑥ PART NUMBER WITH SUFFIX "-TR" MEANS FOR TAPE & REEL PACKAGING (E.G. P/N: XXXXXXXX-XXXC-TRLF).
7. THE HOUSING WILL WITHSTAND EXPOSURE TO 260°C PEAK TEMPERATURE FOR 10 SECONDS IN A CONVECTION, INFRA-RED OR VAPOR PHASE REFLOW OVEN.
- ⑧ THIS PRODUCT MEETS EUROPEAN UNION DIRECTIVES AND OTHER COUNTRY REGULATIONS AS DESCRIBED IN GS-47-0004.
- ⑨ PART NUMBERS ENDING IN "LF" MEANS FOR NOTE 8 LEAD FREE IDENTIFICATION
- ⑩ FINISH :
 - 1) TERMINAL : 30μ" GXT PLATING (CONTACT POINT) OVER 50μ" NICKEL
 - 2) SOLDER TAIL : 100μ" MIN Sn OVER 50μ" NICKEL
 - 3) HOLD DOWN : 100μ" MIN Sn OVER 50μ" NICKEL
11. A  SYMBOL WILL BE NEXT TO ANY DIMENSION, VIEW, OR NOTE WHICH HAS BEEN MODIFIED WITH THE CURRENT DRAWING REVISION.
- ⑫ DATE CODE LOCATION. DATE CODE NO. YYWWD (E.G. 14225)

Amphenol
FCi

© 2016 AFci

spec ref -		dr	Noorhazlinda,	2017/08/14	projection	mm	size	A3	scale	3:1
tolerance std		eng	Noorhazlinda,	2017/09/12			ecn no -		rel level Released	
ISO 406 ISO 1101		chr	-	-			product family SAS		rel level Released	
surface	linear	0.X	±-	Amphenol FCi	12G SAS RECEPTACLE VERTICAL SMT TYPE ASSY		dwg no 10144871		rev A	
		0.XX	±0.20							
		0.XXX	±-							
ISO 1302	angular	0°	±2°	cat. no.	-	Product - Customer Drw		sheet 3 of 3		