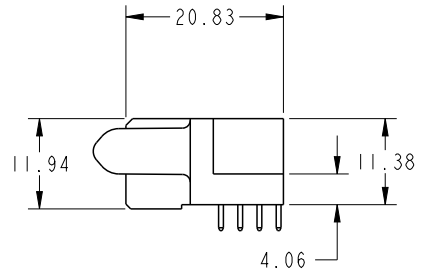
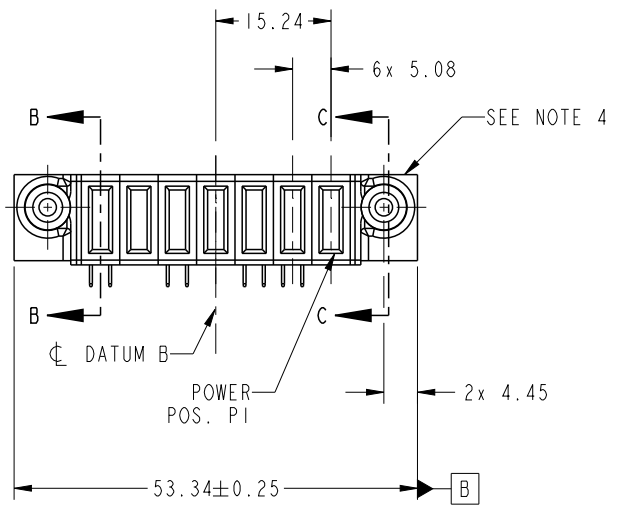




Copyright FCI.

PRODUCT NO. 51915-511LF NOTE 3	POWER								E1
	E2	P7	P6	P5	P4	P3	P2	P1	
	PA	X	PA	X	PC	PA	X		



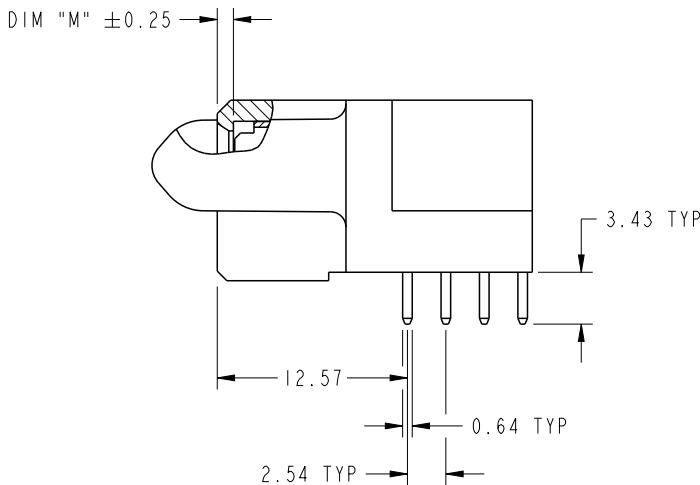
CODE	DIM "M" MATING LENGTH	CONTACT TYPE
PA	[1.07]	POWER
PC	[2.34]	POWER
X	OMITTED	

spec ref	SEE NOTES			dr	De-Ming Lu	2015/09/06	projection 	MM ←→	size	A4	scale	1:1
tolerance std	TOLERANCES UNLESS OTHERWISE SPECIFIED			eng	De-Ming Lu	2015/09/08			ecn no	-		
SEE NOTES				chr	Fancy Zhang	2015/09/08			rel level	Released		
surface	linear	0.X	±0.50	appr	Pei-Ming Zheng	2015/09/08	product family	PwrBlade	rev	A		
		0.XX	±0.25				title	7DCP		dwg no 51915-511		
		0.XXX	±0.10				cat. no.	Product - Customer Drw			sheet 1 of 4	
	angular	0°	±2°	www.fci.com			Product - Customer Drw		sheet 1 of 4			

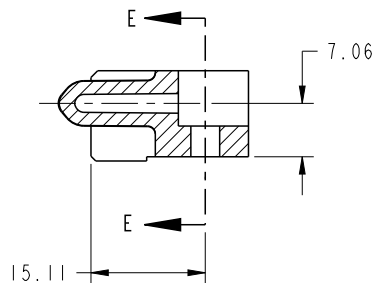
ProdE File - REV C - 2009-06-09

PRODUCT NUMBER

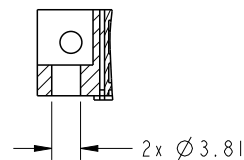
51915-511--
NOTE 3



BROKEN-OUT SECTION B-B
SCALE 2:1



SECTION C-C

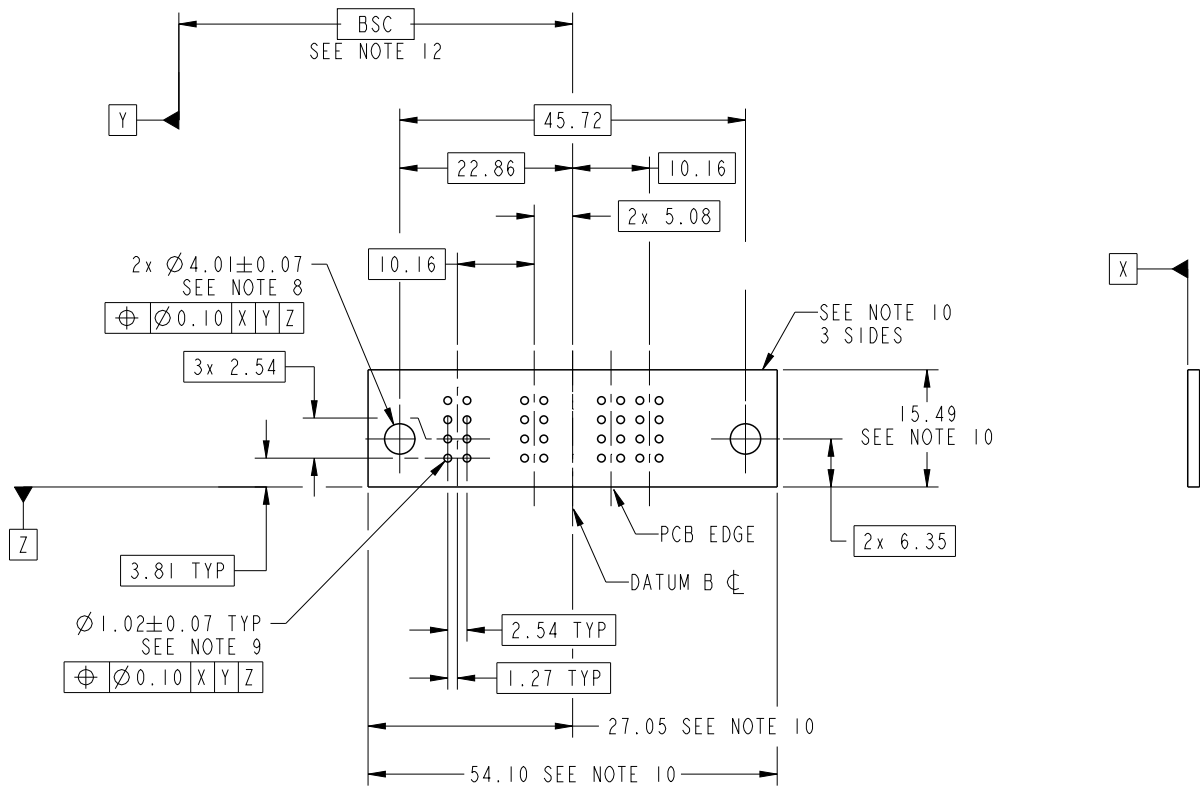


PARTIAL SECTION E-E

dr	De-Ming Lu	2015/09/06	projection 	MM 	size	A4	scale	1:1	
eng	De-Ming Lu	2015/09/08			ecn no	-			
chr	Fancy Zhang	2015/09/08			rel level	Released			
appr	Pei-Ming Zheng	2015/09/08	product family	PwrBlade					
		title	7DCP R/A SOLDER RECEPTACLE		dwg no	51915-511		rev	A
www.fci.com		cat. no.	Product - Customer Drw			sheet 2 of 4			

PRODUCT NUMBER

51915-511__
NOTE 3



RECOMMENDED PCB LAYOUT

dr	De-Ming Lu	2015/09/06	projection 	MM 	size	A4	scale	1:1
eng	De-Ming Lu	2015/09/08			ecn no	-		
chr	Fancy Zhang	2015/09/08			rel level	Released		
appr	Pei-Ming Zheng	2015/09/08	product family	PwrBlade	rev	A		
	title	7DCP R/A SOLDER RECEPTACLE		dwg no	51915-511			
www.fci.com	cat. no.	Product - Customer Drw			sheet 3 of 4			

PRODUCT NUMBER

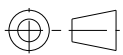
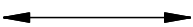
51915-511--
NOTE 3

NOTES:

1. DIMENSIONS AND TOLERANCES ARE IN ACCORDANCE WITH ASME Y14.5M, 1994 UNLESS OTHERWISE SPECIFIED.

CONNECTOR NOTES:

- 2. HOUSING MATERIAL: UL 94 V-0 GLASS FILLED HIGH-TEMP THERMOPLASTIC
POWER CONTACT MATERIAL: COPPER ALLOY
SIGNAL PIN MATERIAL: COPPER ALLOY
 - 3. SEE ITEM 5 & 6 IN PRINT 10064183 FOR PLATING SPEC OF 51915-511LF RESPECTIVELY.
 - 4. MANUFACTURER'S NAME, DATE CODE AND OPTIONAL P/N TO APPEAR ON THIS SURFACE. THE MARK CAN BE OMITTED IF THERE IS NOT ENOUGH SPACE ON THIS SURFACE.
 - 5. PRODUCT SPECIFICATION GS-12-149.
APPLICATION SPECIFICATION BUS-20-067.
 - 6. PACKAGED IN TRAYS.
- PCB NOTES:
- 7. ALL HOLE DIAMETERS ARE FINISHED HOLE SIZE.
 - 8. MOUNTING HOLES, WHERE APPLICABLE, ARE UNPLATED.
 - 9. $\varnothing 1.151 \pm 0.025$ DRILLED HOLES PLATED WITH
0.008 MIN SnPb OR Sn OVER 0.03
TO 0.08 Cu PLATING TO ACHIEVE
 $\varnothing 1.02 \pm .07$ HOLE.
 - 10. CONNECTOR KEEP-OUT ZONE.
 - 11. THE VOID CORING IN BETWEEN POWER MODULES, SIGNAL MODULES AND END MODULES ARE OPTIONAL AND THE SHAPE MAY BE DIFFERENT FOR OPTIMIZE THE MOLDING PROCESS. THE VOID CORING WILL NOT EFFECT TO PRODUCT FUNCTION.
 - 12. DATUM AND BASIC DIMENIONS ARE ESTABLISHED BY CUSTOMER.

dr	De-Ming Lu	2015/09/06	projection 	MM 	size	A4	scale	1:1			
eng	De-Ming Lu	2015/09/08			ecn no	-					
chr	Fancy Zhang	2015/09/08			product family	PwrBlade	rel level	Released			
appr	Pei-Ming Zheng	2015/09/08			www.fci.com	title	7DCP R/A SOLDER RECEPTACLE	dwg no	51915-511	rev	A
		cat. no.	Product - Customer Drw			sheet 4 of 4					



Copyright FCI.