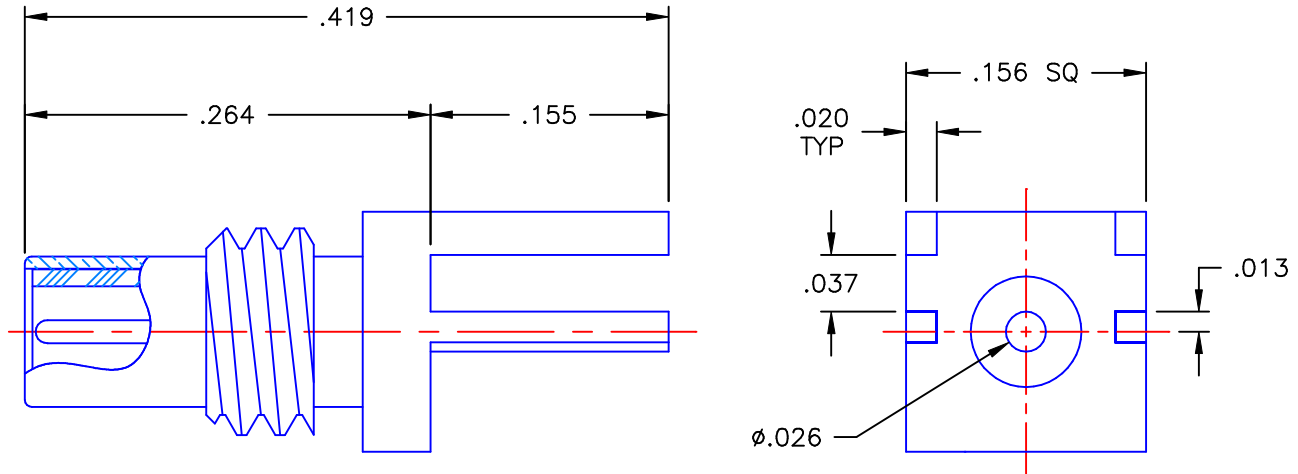


REVISIONS			
REV	DESCRIPTION	DATE	APPROVED
-	INITIAL RELEASE	09/29/99	A.M.



**NOTES:**


**MATERIALS:**

1. BODY = BRASS PER ASTM B16, ALLOY C36000, TEMPER H02.
2. INSULATOR = VIRGIN WHITE TEFLON PER ASTM D1710, GRADE 1, TYPE I, CLASS "A".
3. CONTACT = BERYLLIUM COPPER PER ASTM B196, ALLOY C17300, TEMPER TD04.

**FINISHES:**

1. BODY = GOLD PLATE PER MIL-G-45204, TYPE II, CLASS 0, GRADE C, OVER .00010 TO .00020  
COPPER STRIKE PER MIL-C-14550.
2. CONTACT = GOLD PLATE PER MIL-G-45204, TYPE II, CLASS 1, GRADE C, OVER .00010 TO .00020  
STRESS FREE SULFAMATE NICKEL PER QQ-N-290.

Property of Radiall Incorporated  
This document cannot be reproduced or  
communicated to a third party without prior  
written permission of RADIALL Incorporated.

UNLESS OTHERWISE SPECIFIED DIMENSIONS ARE IN INCHES TOLERANCES ON		DWN:	DATE	 <b>APPLIED ENGINEERING PRODUCTS</b> 104 John W. Murphy Dr. New Haven, CT 06513			
		A.M.	09/28/99				
DECIMAL	ANGLE	CHKD:	DATE				
		D.N.	09/29/99				
		APVD:	DATE	<b>SSMC STRAIGHT MALE JACK EDGE MOUNT RECEPTACLE</b>			
		G.L.	09/29/99				
REFERENCE:		MATERIALS & FINISHES:		SIZE	FSCM NO.	DWG NO.	REV
ORIGINATOR: A.M. DATE: 09/28/99		SEE NOTES		A	19505	7009-1511-005	-
				SCALE	8:1	CODE	SHEET 1 OF 1

7009-1511-005