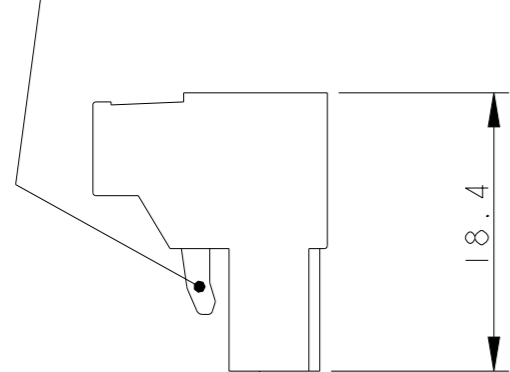


LOC	DIST
FT	0

REVISIONS

P	LTR	DESCRIPTION	DATE	DWN	APVD
C4		PN 2-282959-0 RELEASED FOR PRODUCTION	04DEC2018	RK	PS
C5		PART OBSOLETE	30JUL2021	GMN	PS

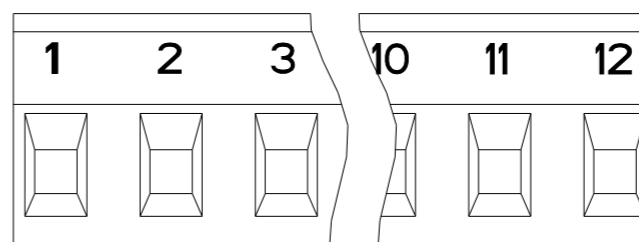
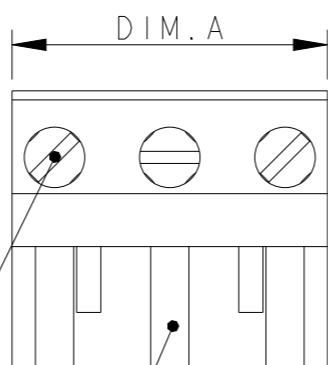
RETENTION LATCH
(DISPOSITIVO DI RITENZIONE)



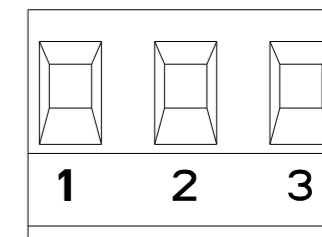
MATING FACE
(LATO DI ACCOPPIAMENTO)

CLAMPING SCREW
(VITE DI SERRAGGIO)

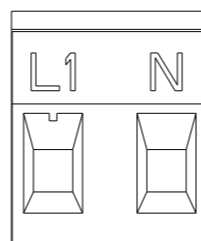
POLARIZATION KEY SLOT
(SEDE PER LINGUETTE DI CODIFICA)



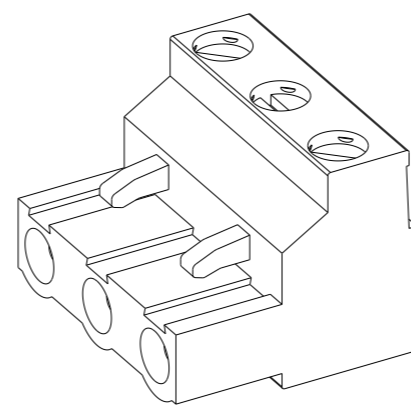
1-282959-5 AS SHOWN



1-282959-6 AS SHOWN

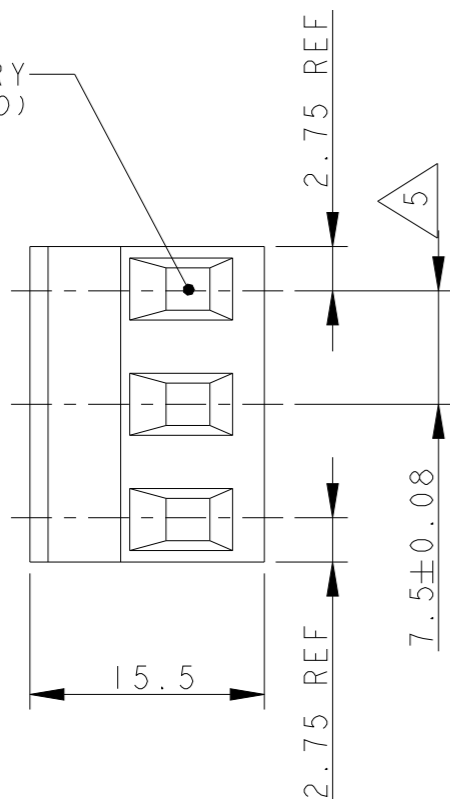


2-282959-0 AS SHOWN



282959-3 AS SHOWN

WIRE ENTRY
(INGRESSO CAVO)



MARKING	COLOUR	DIM.A	NO OF POS.	PART NUMBER
AS SHOWN	GREEN	13.0	2	2-282959-0
/	GRAY	20.5	3	1-282959-9
AS SHOWN	GREEN	20.5	3	1-282959-6
AS SHOWN	GREEN	90.0	12	1-282959-5
/	GREEN	73.0	10	1-282959-4
/	BLACK	20.5	3	1-282959-3
/	GREEN	88.0	12	1-282959-2
/	GREEN	80.5	11	1-282959-1
/	GREEN	73.0	10	1-282959-0
/	GREEN	65.5	9	282959-9
/	GREEN	58.0	8	282959-8
/	GREEN	50.5	7	282959-7
/	GREEN	43.0	6	282959-6
/	GREEN	35.5	5	282959-5
/	GREEN	28.0	4	282959-4
/	GREEN	20.5	3	282959-3
/	GREEN	13.0	2	282959-2

OBSOLETE

THIS DRAWING IS A CONTROLLED DOCUMENT.

DIMENSIONS: mm	TOLERANCES UNLESS OTHERWISE SPECIFIED:
	0 PLC ±-
	1 PLC ±0.2
	2 PLC ±0.20
	3 PLC ±0.001
	4 PLC ±0.0001
	ANGLES ±2
MATERIAL	FINISH

DWN	S. SCHLEGEL	25JUN96
CHK	R CANTORE	25JUN96
APVD	R CANTORE	25JUN96
PRODUCT SPEC	-	-
APPLICATION SPEC	-	-
WEIGHT	-	-

STE TE Connectivity

NAME: TERMINAL BLOCK PLUG, 7.5mm PITCH

SIZE	CAGE CODE	DRAWING NO	RESTRICTED TO
A3	00779	C-282959	-

4

3

2

1

THIS DRAWING IS UNPUBLISHED.

RELEASED FOR PUBLICATION

20

© COPYRIGHT 20

ALL RIGHTS RESERVED.


LOC
FTDIST
0

REVISIONS

P	LTR	DESCRIPTION	DATE	DWN	APVD
-		SEE SHEET 1	-	-	-

NOTES:

- MATERIALS AND FINISH
HOUSING: PA 6-6, UL 94-V0.
COLOURS: GRAY, RAL 7032.
BLACK.
GREEN.
CLAMP: BRASS, NICKEL PLATED.
DOUBLE SIDE CONTACT SPRING: PHOSPHOR BRONZE, TIN PLATED.
CLAMPING SCREW: M3, BRASS, NICKEL PLATED.
- MECHANICAL
MAX. INSERTION FORCE PER POLE : 3.0 N
MIN. WITHDRAWAL FORCE PER POLE : 1.5 N
WIRE STRIPPING LENGTH : 6.0-7.5 mm
RECOMMENDED TIGHTENING TORQUE FOR SCREW : 0.5 Nm.
- ELECTRICAL
WIRE RANGE : 12-30 AWG
MAX. VOLTAGE : 300 V
MAX CURRENT : 15 A
CONTACT RESISTANCE : <15 m Ohm
INSULATION RESISTANCE : >1000 M Ohm (500V DC)
- RECOGNIZED UNDER THE COMPONENT PROGRAM OF
UNDERWRITERS LABORATORIES INC. FILE NO E60677.
- NOT CUMULATIVE TOLERANCE.
- INK MARKING : BLACK COLOUR
NUMERICAL SEQUENCE : FROM LEFT TO RIGHT,
WIRE ENTRY SIDE
- OPERATING TEMPERATURE RANGE: -40°C TO +105°C.

THIS DRAWING IS A CONTROLLED DOCUMENT.		DWN S. SCHLEGEL	25JUN96	STE TE Connectivity	
DIMENSIONS: mm		CHK R CANTORE	25JUN96		
TOLERANCES UNLESS OTHERWISE SPECIFIED:		APVD R CANTORE	25JUN96	NAME TERMINAL BLOCK PLUG, 7.5mm PITCH	
		PRODUCT SPEC	-	RESTRICTED TO	
MATERIAL		APPLICATION SPEC	-	SIZE	CAGE CODE
FINISH		WEIGHT	-	DRAWING NO	REV
		CUSTOMER DRAWING		A300779	G-282959
		SCALE	2:1	SHEET	2 OF 2
					REV C5

1470-19 (3/11)