

## ► General data



Power supply unit with fixed-voltage regulator, input 230 V AC, output 15 V DC/1 A

Order number	2943673
Type	CM 62-PS-230AC/15DC/1

Barcode number	4017918081232
Unit pack	1 Pcs.
Customs tariff	85044094000

## ► Technical data

### Input data

Nominal input voltage	230 V AC
Frequency range	50 Hz ... 60 Hz
Nominal power consumption	Approx. 35 VA
Input fuse	IEC 127-2/EN 60 127-2

---

**Output data**

Nominal output voltage	15 V DC $\pm 4\%$
Output current	1 A
Residual ripple	< 40 mV <sub>ss</sub>
Output fuse	IEC 127-2/EN 60 127-2
Protective circuit/component	Damping diode, varistor

---

**General data**

Width	62.5 mm
Height	139 mm
Depth	75 mm
Weight	1.2 kg
Operating voltage display	LED
Operating mode	100% operating factor
Test voltage input/output	4 kV AC
Degree of protection	IP 20
Ambient temperature (operation)	0 °C ... 60 °C
Installation position	On horizontal DIN rail, venting slits above and below
Assembly instructions	Can be aligned with spacing = 10 mm
Standards/regulations	IEC 664/IEC 664A/DIN VDE 0110-1:1989-01
Standards/regulations	DIN VDE 0551

---

**Connection data, input**

Screw thread	M 2,5
Stripping length	8 mm
Type of connection	Screw connection
Min. conductor cross section AWG/kcmil	24
Conductor cross section AWG/kcmil max	14
Min. conductor cross section, rigid	0.2 mm <sup>2</sup>
Conductor cross section, rigid max.	2.5 mm <sup>2</sup>
Conductor cross section flexible min.	0.2 mm <sup>2</sup>
Max. conductor cross section, flexible	2.5 mm <sup>2</sup>

---

**Connection data, output**

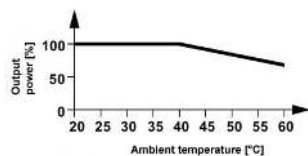
Stripping length	8 mm
Type of connection	Screw connection
Min. conductor cross section AWG/kcmil	24
Conductor cross section AWG/kcmil max	14
Min. conductor cross section, rigid	0.2 mm <sup>2</sup>
Conductor cross section, rigid max.	2.5 mm <sup>2</sup>
Conductor cross section flexible min.	0.2 mm <sup>2</sup>
Max. conductor cross section, flexible	2.5 mm <sup>2</sup>

---

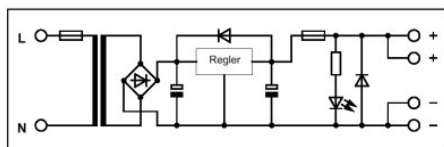
## ▸ Drawings

---

### Diagram



### Circuit diagram



## ► Accessories

---

Item	Designation	Description
<b>Marking</b>		
2947035	EMG-GKS 12	Equipment marker, width 12 mm
2947585	EMG-SGKS 10	Equipment marker, narrow

---

## ► Address

---

Phoenix Contact GmbH & Co. KG  
Flachsmarktstr. 8  
32825 Blomberg  
Germany  
Tel + 49 - (0) 52 35 - 3-00  
Fax + 49 - (0) 52 35 - 3-4 12 00  
[www.phoenixcontact.com](http://www.phoenixcontact.com)

© Phoenix Contact  
Technical modifications reserved