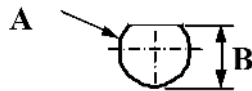


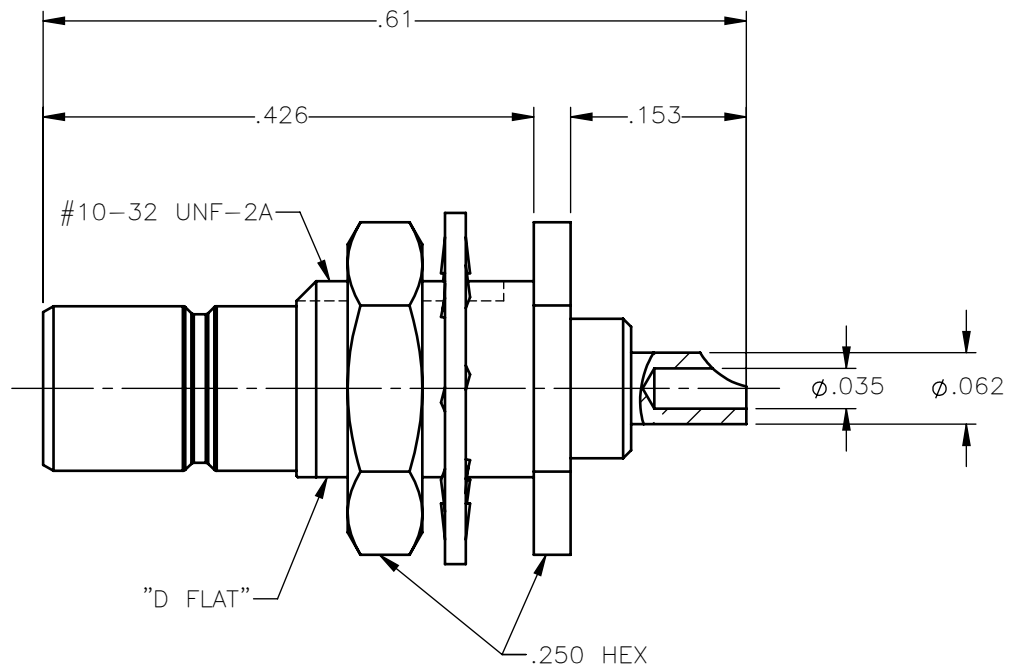
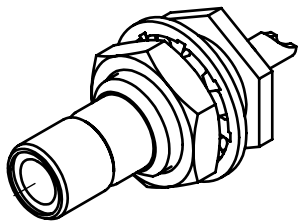
REVISIONS

REV.	DESCRIPTION	DATE	APPROVED
A	INITIAL RELEASE	03/06/18	C.E.

PANEL CUT OUT



inches	
	Maxi mini
A	.198 .192
B	.183 .177



NOTES:

MATERIALS:

1. INSULATORS = VIRGIN WHITE TEFLON PER ASTM D1710, GRADE 1, TYPE I, CLASS "B".
2. LOCKWASHER = PHOSPHOR BRONZE PER ASTM B139, COPPER ALLOY C53400, TEMPER H04.
3. ALL OTHER METAL PARTS = BRASS PER ASTM B16, ALLOY C36000, TEMPER H02.

FINISHES:

1. CONTACT = GOLD PLATE PER ASTM B488-11, TYPE II, 50 μ in MIN, GRADE C, OVER 100 TO 200 μ in STRESS FREE SULFAMATE NICKEL PER AMS-QQ-N-290.
2. ALL OTHER METAL PARTS = NICKEL PLATE PER AMS-QQ-N-290, CLASS 1, GRADE G, EXCEPT 100 TO 200 μ in THICK OVER 50 TO 100 μ in THICK COPPER PER AMS 2418.

UNLESS OTHERWISE SPECIFIED DIMENSIONS ARE IN INCHES TOLERANCES ON

DWN:	DATE
C.E.	03/06/18
CHKD:	DATE
D.N.	03/06/18
APVD:	DATE
J.M.	03/06/18



a RADIALL company

Property of Radiall

This document cannot be reproduced or communicated to a third party without prior written permission of RADIALL.



**SMB STRAIGHT MALE JACK
BULKHEAD MOUNT
SOLDER POT RECEPTACLE**

REFERENCE:

ORIGINATED: C.E.
DATE: 03/06/18

MATERIALS & FINISHES:

SEE NOTES

SIZE	FSCM NO.	DWG NO.	REV
A	19505	2004-7511-000	A
SCALE	6:1		THIRD ANGLE PROJECTION
		SHEET 1 OF 1	

2004-1711-000