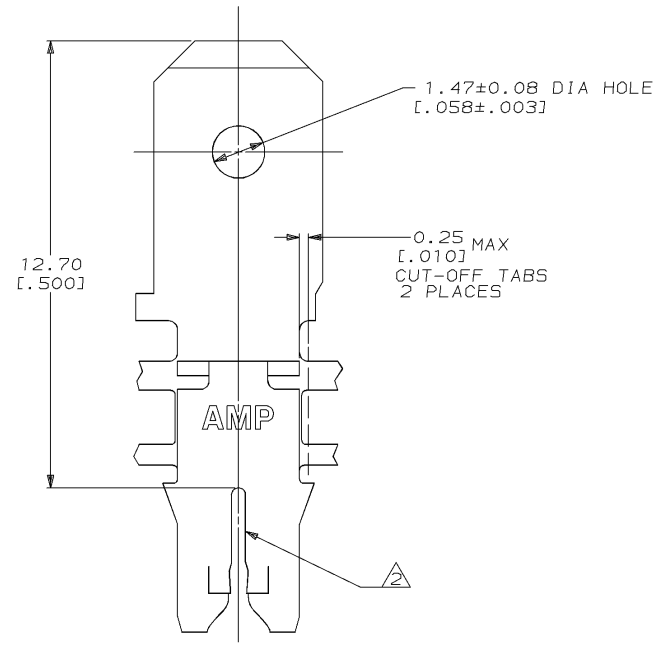
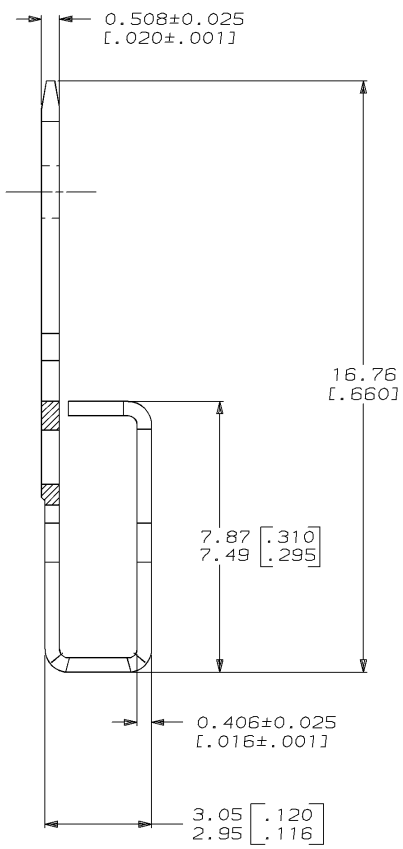
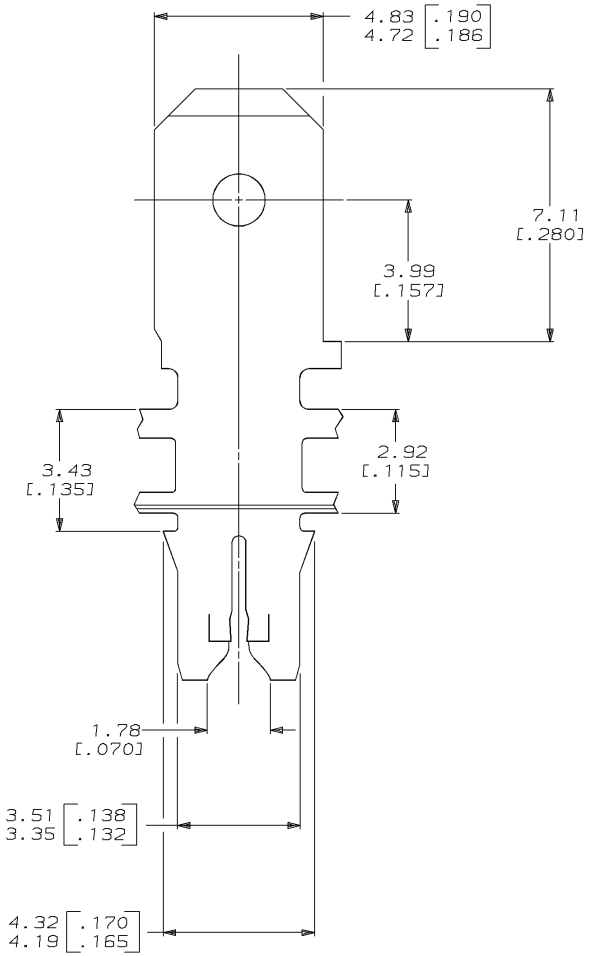
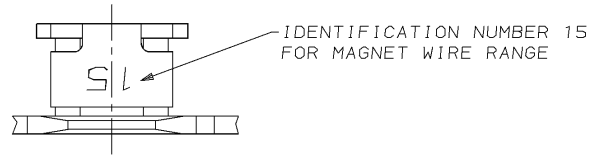


DRAWING MADE IN THIRD ANGLE PROJECTION
 THIS DRAWING IS UNPUBLISHED. RELEASED FOR PUBLICATION , 19 .
 © COPYRIGHT 19 BY AMP INCORPORATED. ALL INTERNATIONAL RIGHTS RESERVED.

LOC	DIST	P	F	ZONE	LTR	REVISIONS	DATE	APPD
AF	50				B	RELEASED PER 0710-0619-94	18/JAN/95	RG/NN

- CONTINUOUS STRIP ON REELS WITH TERMINALS LOCATED ON 5.59 ± 0.08 [$.220 \pm .003$] CENTERS.
- SLOT TERMINATES A SINGLE MAGNET WIRE ONLY. COPPER RANGE: 0.64-0.81mm [#22-#20] AWG.
- AFTER INSERTION INTO PLASTIC HOLDER TAB PORTION MUST BE BENT OVER 45° TO 90° OR POTTED-IN TO PREVENT PULL-OUT WHEN MATING RECEPTACLE IS DISCONNECTED.



63815-1
PART NO

DO NOT SCALE PRINT. UNLESS SPECIFIED DIMENSIONS IN mm [INCHES] TOLERANCES ON: 2 PLC DEC ± 0.25 [.010] 3 PLC DEC ± - ANGLES ± - MATERIAL 4M PRE-MILLED BRASS FINISH 0.002032 [.000080] MIN TIN PER MIL-T-10727	DR 15/OCT/94 MICHAEL S. FEHER	AMP AMP Incorporated Harrisburg, PA 17105-3608		
	CHK 17/OCT/94 PHILLIP M. FORTNEY			
	APPD 17/OCT/94 NELSON E. NEFF	NAME TERMINAL, TAB, 4.75 [.187] FASTON™ MAG-MATE™		
	APPD 17/OCT/94 TERRY L. SHUTTER	PRODUCT SPEC 108-2012	SIZE C 00779	CAGE CODE C=63815
	APPLICATION SPEC 114-2046	SCALE 10:1	SHEET 1 OF 1	
	WEIGHT	CUSTOMER DRAWING		

THIS DRAWING IS A CONTROLLED DOCUMENT FOR AMP INCORPORATED. IT IS SUBJECT TO CHANGE AND THE CONTROLLING ENGINEERING ORGANIZATION SHOULD BE CONTACTED FOR THE LATEST REVISION.