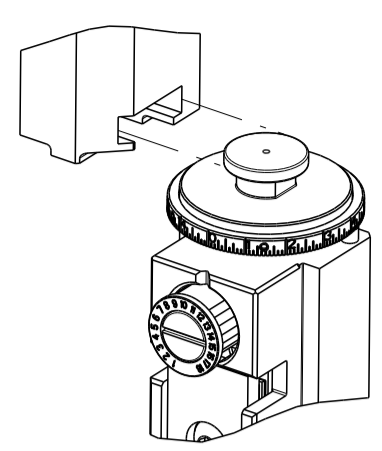


PART NUMBER	REVISION	DESCRIPTION	FEED TYPE
2151528-2	H	FINE CRIMP HEIGHT ADJUST	PNEUMATIC
7-2151528-2	H	PNEUMATIC AND CRIMP TOOLING KIT	PNEUMATIC
7-2151528-7	E	CRIMP TOOLING KIT	-

SUPERSEDED BY 4151203-2
 SUPERSEDED BY 7-4151203-2

ATLANTIC VERSION TERMINATOR
 INTERFACE ADAPTER

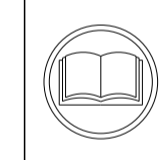


APPLICATOR DATA		
CRIMP	SIZE	TYPE
WIRE	0.64 mm [.025]	F
INSUL	0.61 mm [.024]	F

APPLICATOR INSTRUCTIONS
 408-35042

TERMINAL DATA: HIROSE TERMINAL HIROSE CRIMP SPECIFICATION	
TERMINAL NAME: HIROSE TERMINAL	
WIRE STRIP LENGTH	INSULATION DIAMETER RANGE
1.20-1.90 mm [.047-.075 IN]	Ø0.50-0.60 mm [.020-.024 IN]
TERMINAL APPLICATION SPECIFICATION	TAD-P 0506
TERMINALS APPLIED	
TE TERMINAL	HIROSE TERMINAL
1949699-1	DF20F-2830SCFA
1949699-2	DF20B-2830SCFA

WIRE SIZE	CRIMP HEIGHT mm [INCH]	CRIMP HEIGHT REFERENCE SETTING
28 AWG	0.52 +/- 0.02 [.020 +/- .001]	10.3
30 AWG	0.50 +/- 0.02 [.020 +/- .001]	10.4



- 1 RECOMMENDED SPARE PARTS
- 2 REFER TO SUPPLIED INSTRUCTION SHEET FOR CLEANING, LUBRICATION AND STORAGE OF APPLICATOR.
- 3 APPLY PART NUMBER 2-23419-6 LOCTITE TO THREADS OF ITEM 242.
- 4 CRIMP HEIGHT REFERENCE SETTING WAS THE SETTING USED WHEN THE APPLICATOR WAS QUALIFIED AT THE FACTORY. ADJUSTMENT MAY BE NECESSARY WHEN RUNNING APPLICATOR IN THE FIELD.
- 5 TERMINAL LUBRICANT IS RECOMMENDED.
- 6 UNLESS SPECIFIED OTHERWISE TORQUE VALUES SHALL BE USED PER DOCUMENT, 101-35000.
- 7 TERMINAL PITCH NOT COMPATIBLE WITH MECHANICAL FEED.

***WARNING**
 ON INSTALLATION, SET WIRE DISC TO CRIMP HEIGHT REFERENCE SETTING FOR LARGEST WIRE SIZE. CRIMP HEIGHT REFERENCE SETTINGS GREATER THAN THE VALUE SHOWN MAY CAUSE DAMAGE TO THE CRIMP TOOLING. REFER TO THE INSTRUCTION SHEET FOR PROPER SETUP AND ADJUSTMENTS.

LOC	DIST	REVISIONS			
A	66	REV	DATE	BY	CHKD
		F	08JAN2019	TB	TE
		G	01SEP2021	JWC	TE
		H	25JAN2022	RK	GB
		H1	29SEP2022	JWC	GB

-	1	1	2119641-1	FEED CAM, AIR FEED	248
-	1	1	2119082-1	CAM, SNAIL, INSULATION ADJUSTMENT	244
-	1	1	2079764-1	WASHER, WAVE SPRING, CREST-TO-CREST	243
-	1	1	2119083-1	RETAINER, INSULATION DIAL	242
-	1	1	2844940-1	AIR FEED MODULE	238
-	REF	REF	994970-2	COUNTER, MAGNETIC	164
-	1	1	1-22281-8	SPRING, COMPRESSION	121
-	1	1	2119955-1	ASSY, LUBRICATOR, SIDE FEED	113
-	1	1	2844908-1	SCREW, LOCKING	99
-	1	1	2844907-1	POST, LOCKING	98
-	1	1	1-690438-0	FRONT STRIP GUIDE	96
-	2	2	2168083-1	SCR, SKT HD CAP, RoHS, M3 X 8.0	95
-	1	1	2168083-6	SCR, SKT HD CAP, RoHS, M5 X 65	93
-	1	1	1-455888-6	SPACER, CRIMPER	82
-	1	1	1803607-3	DOCUMENTATION PACKAGE	71
-	1	1	1-2119791-4	DEPRESSOR, WIRE	70
-	1	1	2119943-1	WASHER, SPACER	69
-	1	1	2119740-1	TAG, IDENTIFICATION	67
-	2	2	2168078-1	SCREW, DRIVE, RH, RoHS, 2 x .188	66
-	2	2	2-18032-5	SCR, SET, FLT PNT, M5 X 20.0	61
-	1	1	2168083-2	SCR, SKT HD CAP, RoHS, M4 X 8.0	60
-	1	1	1338685-1	PAWL, FEED	56
-	4	4	2168083-3	SCR, SKT HD CAP, RoHS, M4 X 12.0	54
-	1	1	18023-9	SCR, SKT HD CAP M4 X 6.0	49
-	1	1	1803583-9	APPLICATOR BASIC ASSEMBLY, SF	46
-	1	1	1803515-1	RAM ASSEMBLY, SF ATLANTIC	44
-	1	1	1803602-1	SCR, BHSC, RoHS (M8 X 25)	41
-	1	1	2-1752356-6	SUPPORT, TERMINAL	34
-	2	2	2079383-5	SCR, BHSC, RoHS (M4 X 20)	33
-	2	2	2-2844962-1	SPACER, CYLINDRICAL, STRIP GUIDE	30
-	1	1	2-2844938-0	PLATE, STRIP GUIDE	29
-	2	2	22283-1	SPRING, COMPRESSION	27
-	1	1	356835-1	LEVER, DRAG RELEASE	26
-	1	1	240792-1	DRAG, TERMINAL	25
-	1	1	1320928-2	STRIP GUIDE	24
-	1	1	980371-4	SCR, SKT HD SHLDR 5.0 DIA X 6.0	23
-	1	1	2168083-2	SCR, SKT HD CAP, RoHS, M4 X 8.0	21
-	2	2	1-18028-2	WASHER, FLAT, REG M4	20
-	1	1	2119533-1	STRIPPER, SIDE FEED	19
-	1	1	3-22280-3	SPRING, COMPRESSION	12
-	1	1	1-356885-5	STOP, SHEAR	11
-	1	1	2119805-1	SHEAR HOLDER, FRONT	10
-	1	1	1803095-6	FLOATING SHEAR, FRONT	9
-	1	2	1803334-8	ANVIL, COMBINATION	8
-	1	1	1-2119757-9	DEPRESSOR, SHEAR	5
-	1	1	2-238011-0	BLOCK, CRIMPER SPACER	4
-	1	2	1-1803326-2	CRIMPER, INSULATION F	3
-	1	2	1803323-7	CRIMPER, WIRE PREMIUM	1

DIMENSIONS:		TOLERANCES UNLESS OTHERWISE SPECIFIED:		MATERIAL:	
mm	0 PLC ±	1 PLC ±	2 PLC ±	3 PLC ±	4 PLC ±
	ANGLES	FINISH			

OWN	CHE	APVD	NAME	SIZE	CAGE CODE	DRAWING NO	RESTRICTED TO
C. MOYER	T. ELBIN	T. ELBIN	Ocean Side Feed Applicator	A1	00779	2151528	

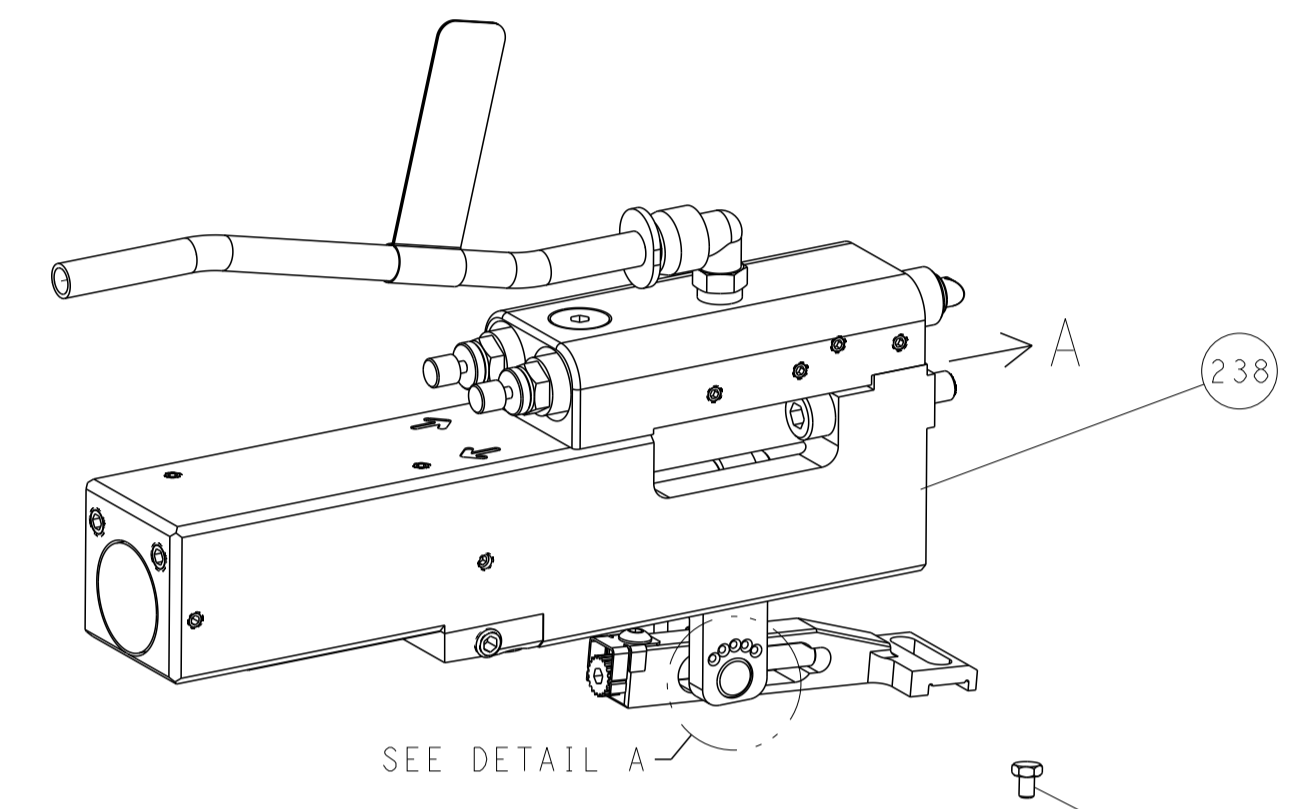
Customer Accessible Production Drawing SCALE 1:2 SHEET 1 OF 4 REV H1

ATLANTIC VERSION
 Shown on sheets 1 of 4 & 2 of 4
 (Pacific version shown on sheets 3 of 4 & 4 of 4)

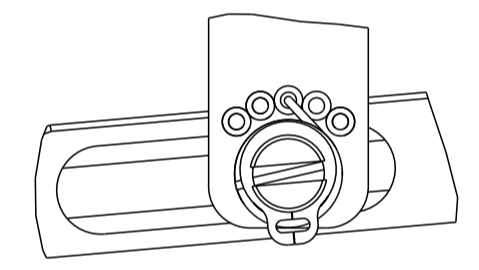
LOC	DIST	REVISIONS			
P	LTN	DESCRIPTION	DATE	OWN	APVD
A	66	SEE SHEET 1	-	-	-

FEED TYPE

PNEUMATIC

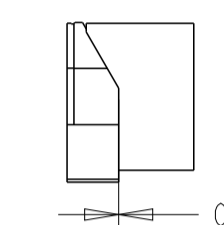
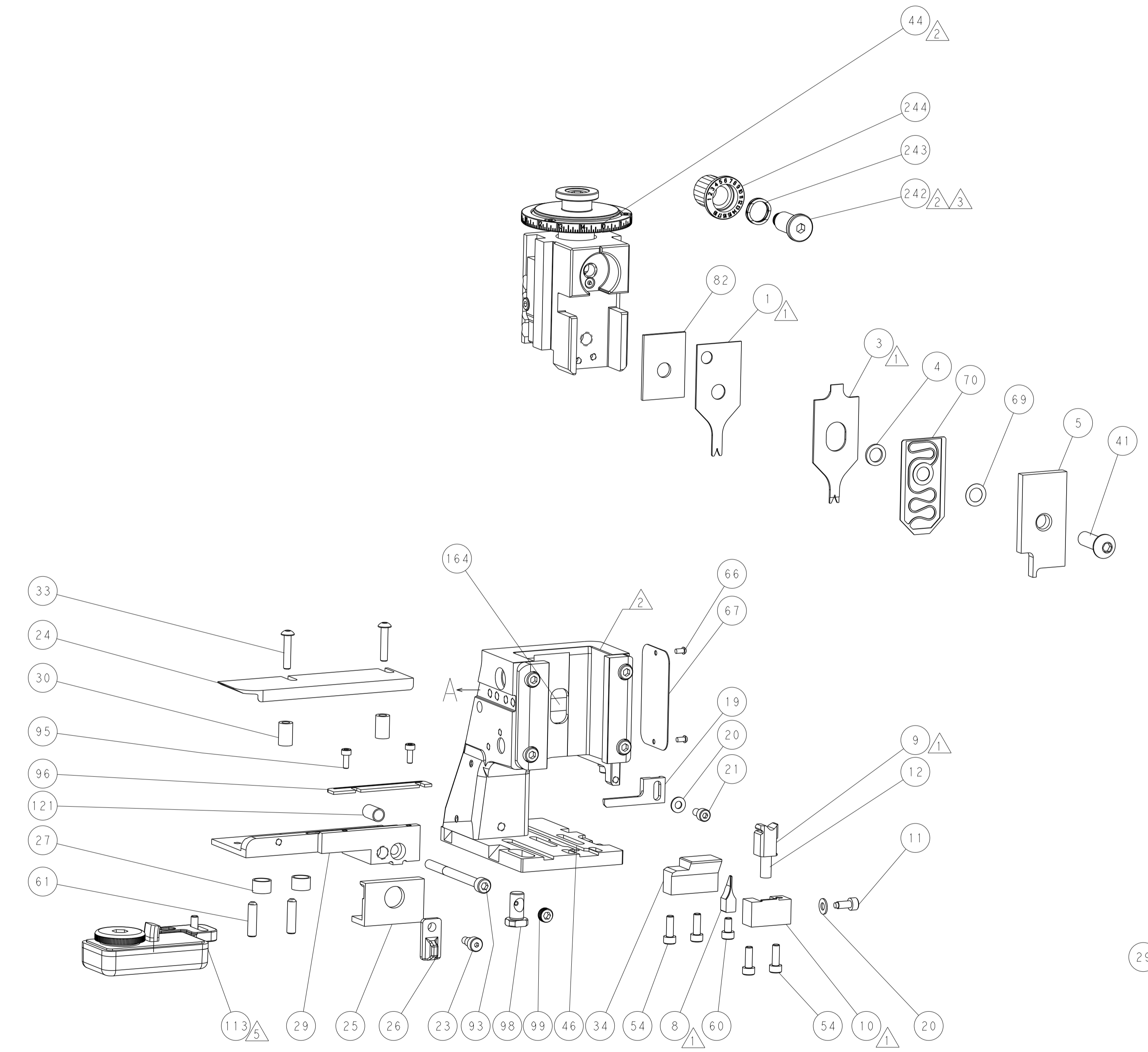
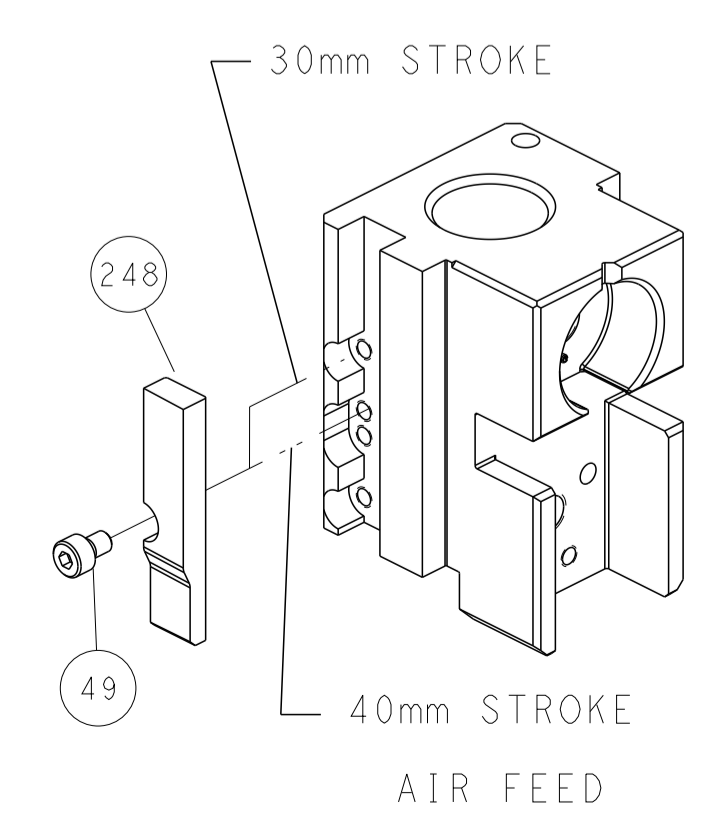


FEED SPRING SETTING POSITION
(SHOWN FROM REAR SIDE)

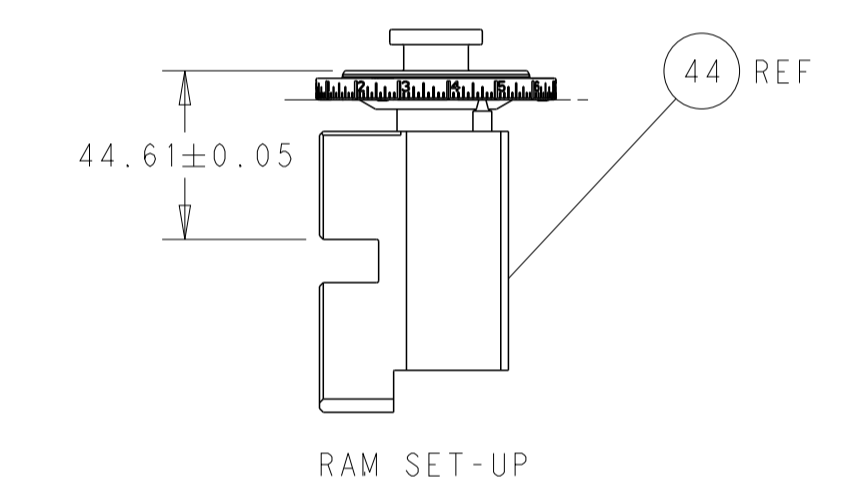


DETAIL A

CAM POSITION

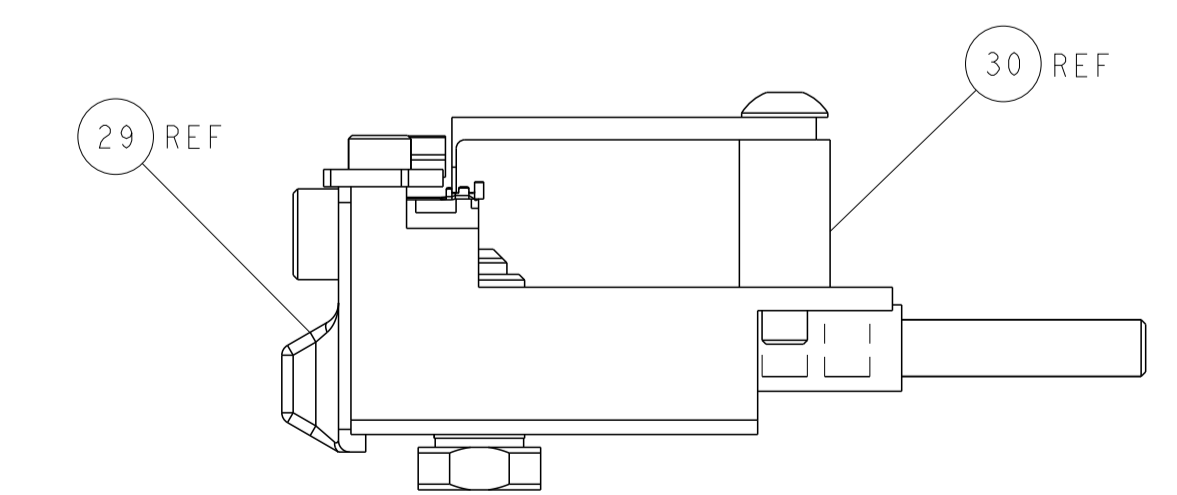


TERMINAL SUPPORT LOCATION



RAM SET-UP

ITEM 30 LOCATED AT FRONT HOLES

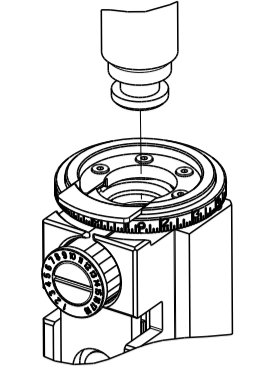


FEED TRACK POSITION GUIDE BY INSULATION BARREL

ATLANTIC VERSION
 Shown on sheets 1 of 4 & 2 of 4
 (Pacific version shown on sheets 3 of 4 & 4 of 4)

DIMENSIONS: mm 		TOLERANCES UNLESS OTHERWISE SPECIFIED: 0 PLC ± 1 PLC ± 2 PLC ± 3 PLC ± 4 PLC ± ANGLES ± FINISH ±		DWN C. MOYER 20OCT2011 CHK T. ELBIN 20OCT2011 APVD T. ELBIN 20OCT2011 PRODUCT SPEC APPLICATION SPEC WEIGHT Customer Accessible Production Drawing		NAME Ocean Side Feed Applicator SIZE CAGE CODE DRAWING NO A1 00779 ©=2151528 SCALE 1:2 SHEET 2 OF 4 REV H1		TE Connectivity Harrisburg, PA 17105-3608	
-----------------------	--	---	--	---	--	--	--	--	--

PACIFIC VERSION TERMINATOR
 INTERFACE ADAPTER



SUPERSEDED BY 2-4151203-2

PART NUMBER	REVISION	DESCRIPTION	FEED TYPE
2-2151528-2	H	FINE CRIMP HEIGHT ADJUST	PNEUMATIC
7-2151528-7	E	CRIMP TOOLING KIT	-

APPLICATOR DATA		
CRIMP	SIZE	TYPE
WIRE	0.64 mm [.025]	F
INSUL	0.61 mm [.024]	F
APPLICATOR INSTRUCTIONS 408-35042		

TERMINAL DATA: HIROSE TERMINAL HIROSE CRIMP SPECIFICATION	
TERMINAL NAME: HIROSE TERMINAL	
WIRE STRIP LENGTH 1.20-1.90 mm [.047-.075 IN]	INSULATION DIAMETER RANGE Ø0.50-0.60 mm [.020-.024 IN]
TERMINAL APPLICATION SPECIFICATION TAD-P 0506	
TERMINALS APPLIED	
TE TERMINAL	HIROSE TERMINAL
1949699-1	DF20F-2830SCFA
1949699-2	DF20B-2830SCFA

WIRE SIZE	CRIMP HEIGHT mm [INCH]	CRIMP HEIGHT REFERENCE SETTING
28 AWG	0.52 +/- 0.02 [.020 +/- .001]	10.3
30 AWG	0.50 +/- 0.02 [.020 +/- .001]	10.4

- RECOMMENDED SPARE PARTS
- REFER TO SUPPLIED INSTRUCTION SHEET FOR CLEANING, LUBRICATION AND STORAGE OF APPLICATOR.
- APPLY PART NUMBER 2-23419-6 LOCTITE TO THREADS OF ITEM 242.
- CRIMP HEIGHT REFERENCE SETTING WAS THE SETTING USED WHEN THE APPLICATOR WAS QUALIFIED AT THE FACTORY. ADJUSTMENT MAY BE NECESSARY WHEN RUNNING APPLICATOR IN THE FIELD.
- TERMINAL LUBRICANT IS RECOMMENDED.
- UNLESS SPECIFIED OTHERWISE TORQUE VALUES SHALL BE USED PER DOCUMENT, 101-35000.
- TERMINAL PITCH NOT COMPATIBLE WITH MECHANICAL FEED.

***WARNING**
 ON INSTALLATION, SET WIRE DISC TO CRIMP HEIGHT REFERENCE SETTING FOR LARGEST WIRE SIZE. CRIMP HEIGHT REFERENCE SETTINGS GREATER THAN THE VALUE SHOWN MAY CAUSE DAMAGE TO THE CRIMP TOOLING. REFER TO THE INSTRUCTION SHEET FOR PROPER SETUP AND ADJUSTMENTS.

LOC	DIST	REV	DATE	BY	APPV
A	66				

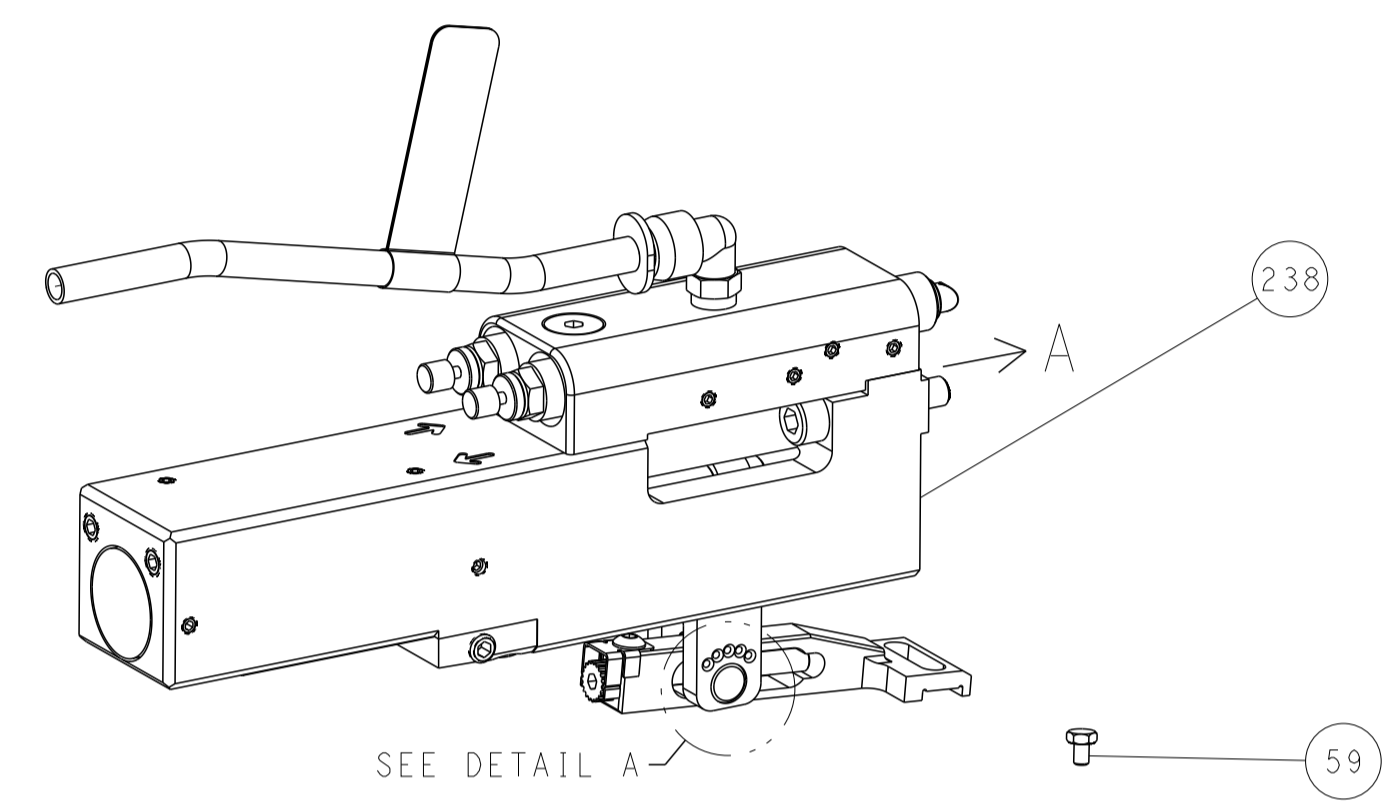
REV	DATE	BY	APPV	DESCRIPTION	ITEM NO
-	1			2119082-1 CAM, SNAIL, INSULATION ADJUSTMENT	244
-	1			2079764-1 WASHER, WAVE SPRING, CREST-TO-CREST	243
-	1			2119083-1 RETAINER, INSULATION DIAL	242
-	1			2844940-1 AIR FEED MODULE	238
-	REF			994970-2 COUNTER, MAGNETIC	164
-	1			2119641-2 FEED CAM, AIR FEED	151
-	1			2168083-8 SCR, SKT HD CAP, RoHS, M4 X 16	144
-	4			2168083-9 SCR, SKT HD CAP, RoHS, M4 X 20	143
-	1			1-1803583-0 APPLICATOR BASIC ASSEMBLY, SF	141
-	1			1803516-1 RAM ASSEMBLY, SF PACIFIC	140
-	1			1-22281-8 SPRING, COMPRESSION	121
-	1			2119955-1 ASSY, LUBRICATOR, SIDE FEED	113
-	1			2844908-1 SCREW, LOCKING	99
-	1			2844907-1 POST, LOCKING	98
-	1			1-690438-0 FRONT STRIP GUIDE	96
-	2			2168083-1 SCR, SKT HD CAP, RoHS, M3 X 8.0	95
-	1			2168083-6 SCR, SKT HD CAP, RoHS, M5 X 65	93
-	1			1-455888-6 SPACER, CRIMPER	82
-	1			1803607-3 DOCUMENTATION PACKAGE	71
-	1			1-2119791-4 DEPRESSOR, WIRE	70
-	1			2119943-1 WASHER, SPACER	69
-	1			2119740-1 TAG, IDENTIFICATION	67
-	2			2168078-1 SCREW, DRIVE, RH, RoHS, 2 x .188	66
-	2			2-18032-5 SCR, SET, FLT PNT, M5 X 20.0	61
-	1			1338685-1 PAWL, FEED	56
-	1			18023-9 SCR, SKT HD CAP M4 X 6.0	49
-	1			1803602-1 SCR, BHSC, RoHS (M8 X 25)	41
-	1			2-1752356-6 SUPPORT, TERMINAL	34
-	2			2079383-5 SCR, BHSC, RoHS (M4 X 20)	33
-	2			2-2844962-1 SPACER, CYLINDRICAL, STRIP GUIDE	30
-	1			2-2844938-0 PLATE, STRIP GUIDE	29
-	2			22283-1 SPRING, COMPRESSION	27
-	1			356835-1 LEVER, DRAG RELEASE	26
-	1			240792-1 DRAG, TERMINAL	25
-	1			1320928-2 STRIP GUIDE	24
-	1			980371-4 SCR, SKT HD SHLDR 5.0 DIA X 6.0	23
-	1			2168083-2 SCR, SKT HD CAP, RoHS, M4 X 8.0	21
-	2			1-18028-2 WASHER, FLAT, REG M4	20
-	1			2119533-1 STRIPPER, SIDE FEED	19
-	1			3-22280-3 SPRING, COMPRESSION	12
-	1			1-356885-5 STOP, SHEAR	11
-	1			2119805-1 SHEAR HOLDER, FRONT	10
-	1			1803095-6 FLOATING SHEAR, FRONT	9
1	1			1803334-8 ANVIL, COMBINATION	8
-	1			1-2119757-9 DEPRESSOR, SHEAR	5
-	1			2-238011-0 BLOCK, CRIMPER SPACER	4
1	1			1-1803326-2 CRIMPER, INSULATION F	3
-	1			1803323-7 CRIMPER, WIRE PREMIUM	1
-77	-22			PART NO	
				DESCRIPTION	
				ITEM NO	

PACIFIC VERSION
 Shown on sheets 3 of 4 & 4 of 4
 (Atlantic version shown on sheets 1 of 4 & 2 of 4)

DIMENSIONS: mm 		TOLERANCES UNLESS OTHERWISE SPECIFIED: 0 PLC ± 1 PLC ± 2 PLC ± 3 PLC ± 4 PLC ± ANGLES ± FINISH		DWN C. MOYER 20OCT2011 CHK T. ELBIN 20OCT2011 APVD T. ELBIN 20OCT2011 PRODUCT SPEC APPLICATION SPEC WEIGHT SCALE 1:2 SHEET 3 OF 4 REV H1		NAME Ocean Side Feed Applicator SIZE CAGE CODE DRAWING NO A1 00779 C=2151528	
-----------------------	--	---	--	--	--	--	--

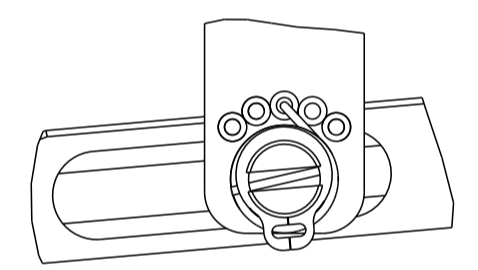
LOC	DIST	REVISIONS			
P	LTN	DESCRIPTION	DATE	OWN	APVD
-	-	SEE SHEET 1	-	-	-

FEED TYPE PNEUMATIC



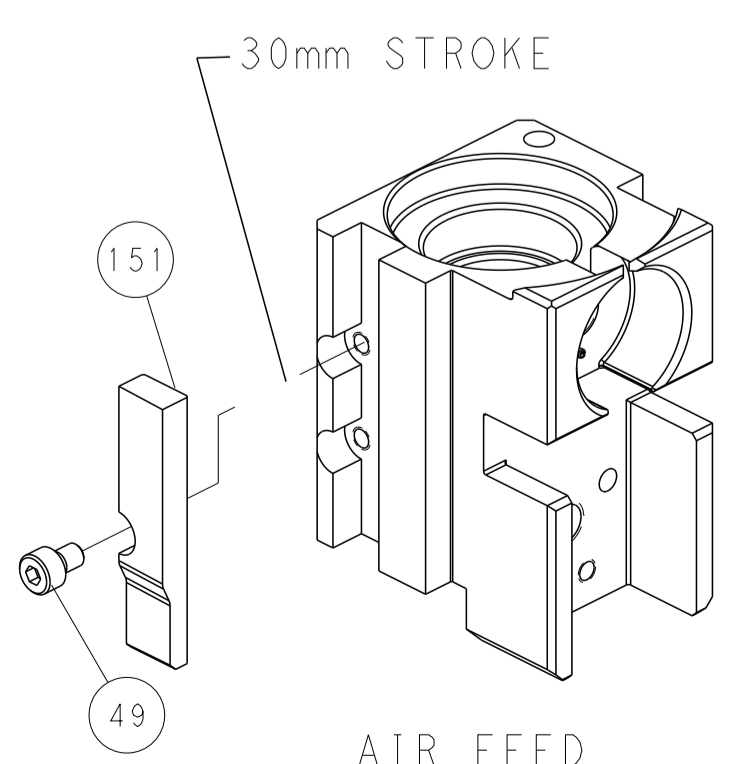
SEE DETAIL A

FEED SPRING SETTING POSITION (SHOWN FROM REAR SIDE)

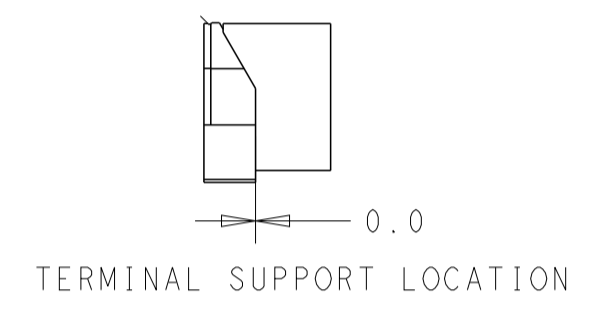
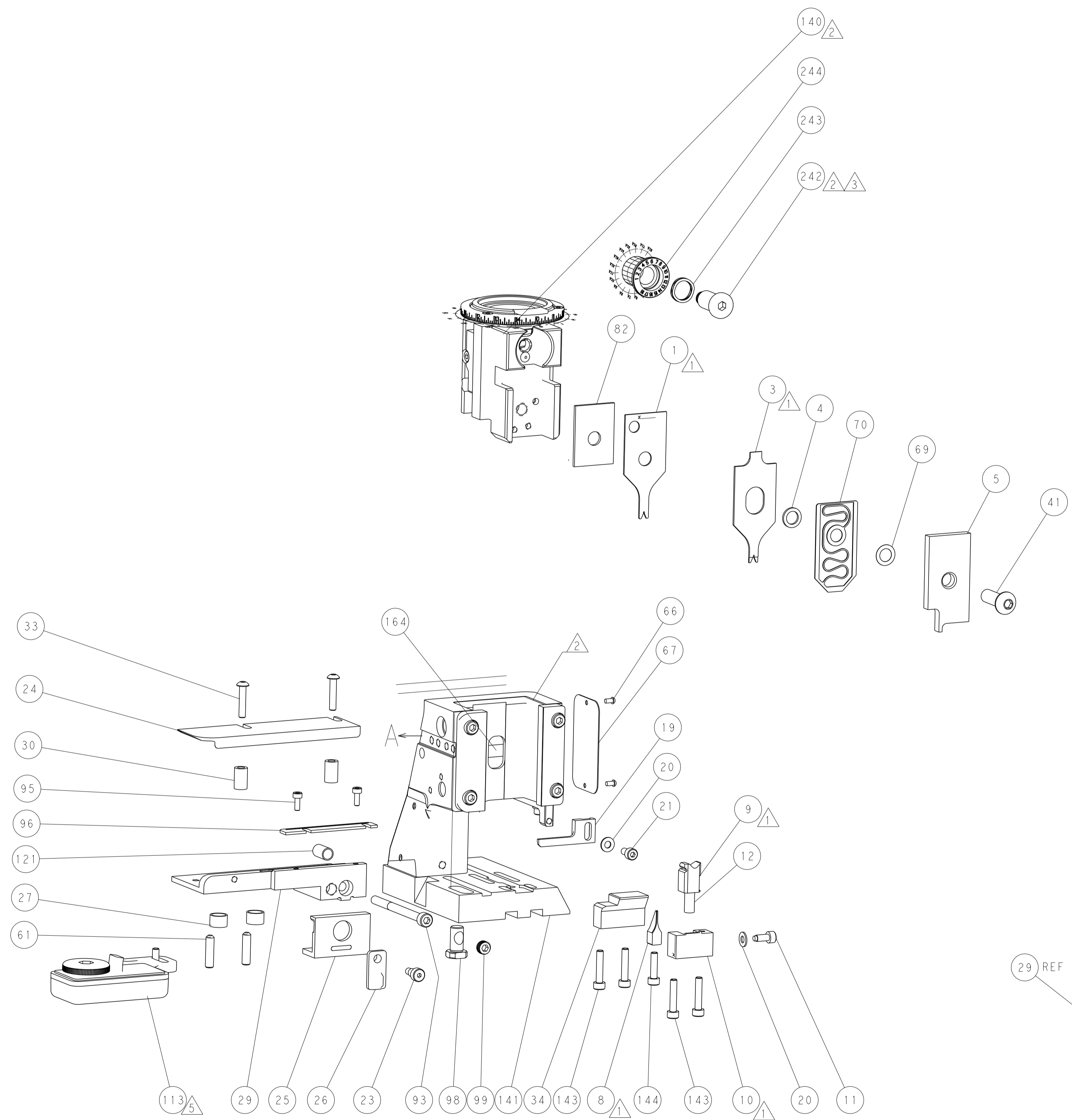


DETAIL A

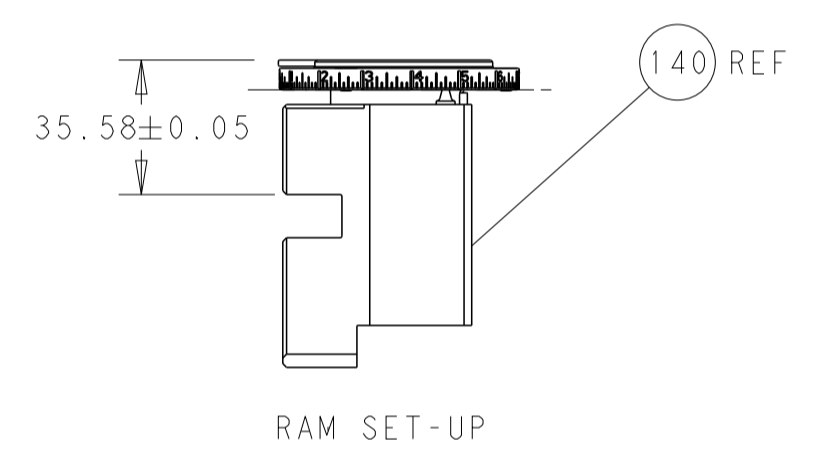
CAM POSITION



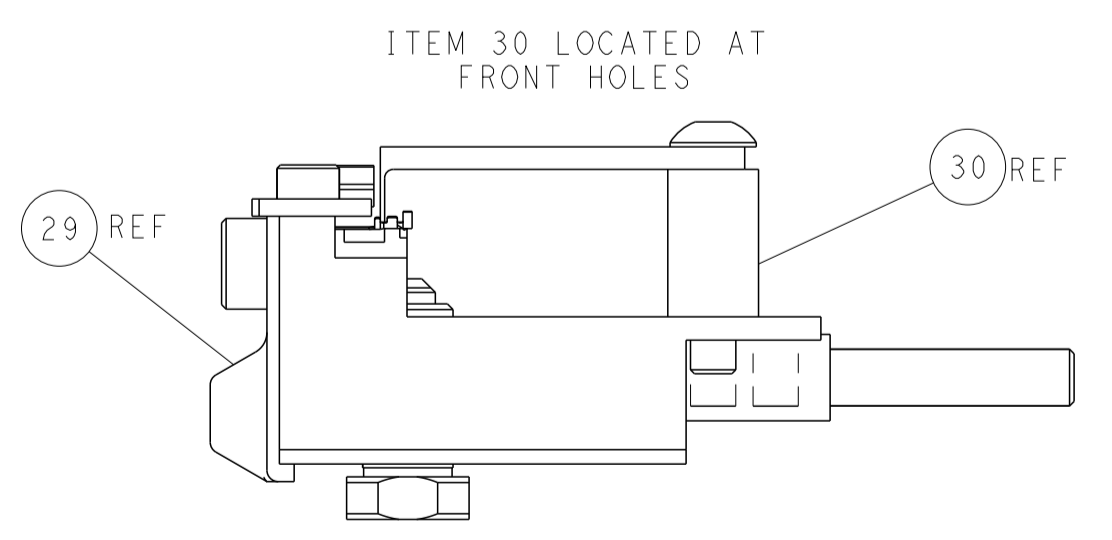
AIR FEED



TERMINAL SUPPORT LOCATION



RAM SET-UP



FEED TRACK POSITION GUIDE BY INSULATION BARREL

PACIFIC VERSION
 Shown on sheets 3 of 4 & 4 of 4
 (Atlantic version shown on sheets 1 of 4 & 2 of 4)

DIMENSIONS:		TOLERANCES UNLESS OTHERWISE SPECIFIED:		DWN C. MOYER 20OCT2011		TE Connectivity	
mm	0 PLC ±	1 PLC ±	2 PLC ±	3 PLC ±	4 PLC ±	CHG T. ELBIN 20OCT2011	Harrisburg, PA 17105-3608
MATERIAL:		FINISH:		APVD T. ELBIN 20OCT2011		NAME	
				PRODUCT SPEC		Ocean Side Feed Applicator	
				APPLICATION SPEC		SIZE CAGE CODE DRAWING NO	
				WEIGHT		A1 00779 C=2151528	
				Customer Accessible Production Drawing		RESTRICTED TO	
				SCALE 1:2		SHEET 1 OF 4 REV HI	