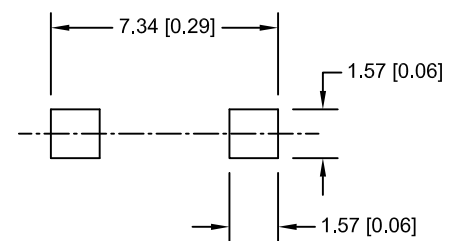
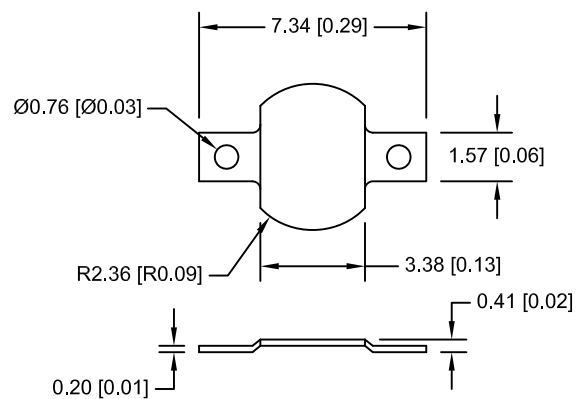



Date	SYM	REVISION RECORD	AUTH	DR.	CK.



PCB LAYOUT

NOTES:

1. MATERIAL:
0.20mm BRASS, NICKLE PLATED
2. ROHS COMPLIANT

Tolerance (Except as noted)	 Memory Protection Devices, Inc 200 Broad Hollow Road, Farmingdale, New York 11735		
decimal $\pm .5$ (.020)		Scale	Drawn By B.S. Approved By T.B.
Fractional $\pm .8$ (.030)	Title COIN CELL SM NEGATIVE CONTACT		
Angular $\pm 3^\circ$	Date 12/02/11	Drawing Number BK-2982	