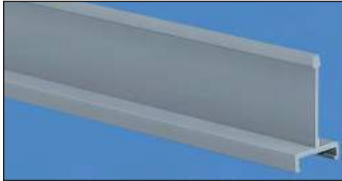


PANDUCT® Divider Wall



- Wiring duct divider wall can be mounted inside any type of PANDUIT® PVC wiring duct to create multiple channels
- Simply install the divider wall base when mounting the duct and snap the divider wall onto the mounting base accessory (see page E6)
- All versions snap onto DB-C mounting base
- Divider wall heights 2" and greater have a scoreline feature allowing sections to be removed leaving a smooth edge
- Meets UL508/508A insulation material requirement for barrier between conductors



Part Number	For Nominal Duct Height (In.)	Std. Pkg. Qty.	Std. Ctn. Qty.	Length (ft)
-------------	-------------------------------	----------------	----------------	-------------

Solid Divider Wall for use with all Types of PVC Wiring Duct

D1H6	1.00	6	120	6
D1.5H6	1.50	6	120	6
D2H6	2.00	6	120	6
D3H6	3.00	6	120	6
D4H6	4.00	6	120	6

Slotted Divider Wall for use with all Types of PVC Wiring Duct

SD2H6	2.00	6	120	6
SD3H6	3.00	6	120	6
SD4H6	4.00	6	120	6

Part Number	For Nominal Duct Height (mm)	Std. Pkg. Qty.	Std. Ctn. Qty.	Length (M)
-------------	------------------------------	----------------	----------------	------------

Metric Solid Divider Wall for use with Type MC Duct

D50H2	50	2	40	2
D75H2	75	2	40	2
D100H2	100	2	40	2

NOTE: Must be used with Mounting Base (DB-C) which is sold separately. Install mounting bases to the duct channel, locate within 2" of each divider wall end and at least every 12" along the length.

NEW! PANDUCT® Type TMC Low Smoke/Low Toxicity Solid Divider Wall



- TMC Divider Wall can be mounted inside TMC Wiring Duct to create multiple channels
- Low smoke, low toxicity and low flammability material
- Simply install the divider wall base when mounting the duct and snap the divider wall onto mounting base (part No. DB-C)

Part Number	For Nominal Duct Height (mm)	Std. Pkg. Qty.	Std. Ctn. Qty.	Length (M)
TMC50DW2	50	2	20	2
TMC75DW2	75	2	20	2

NOTE: Must be used with Mounting Base (DB-C) which is sold separately. Install mounting bases to the duct channel, locate within 2" of each divider wall end and at least every 12" along the length.