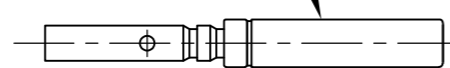


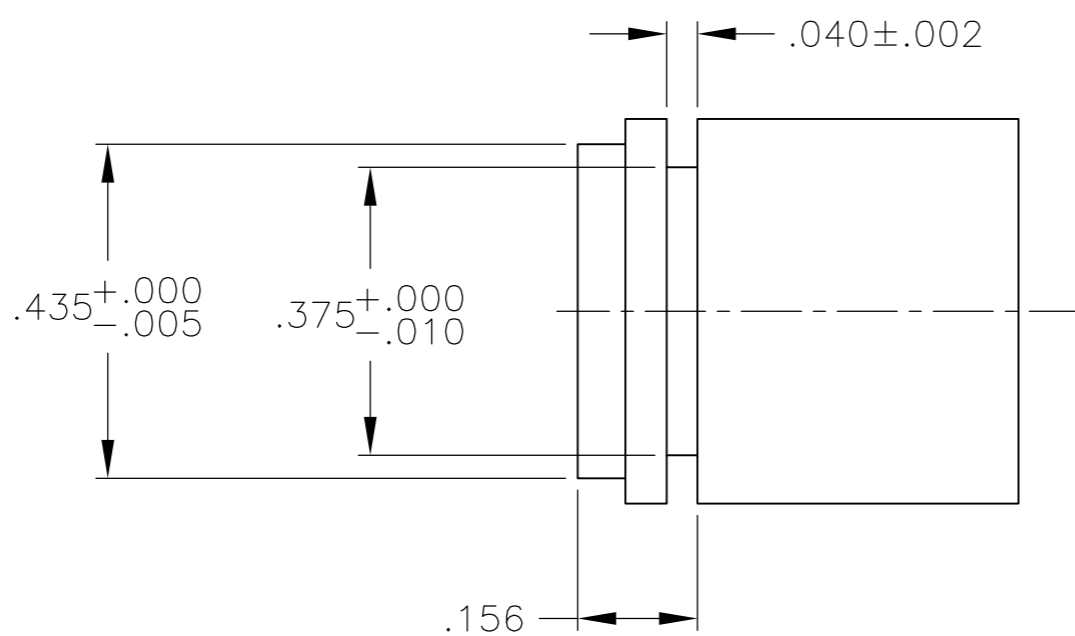
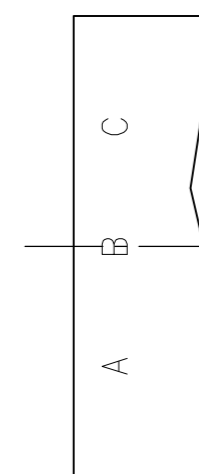
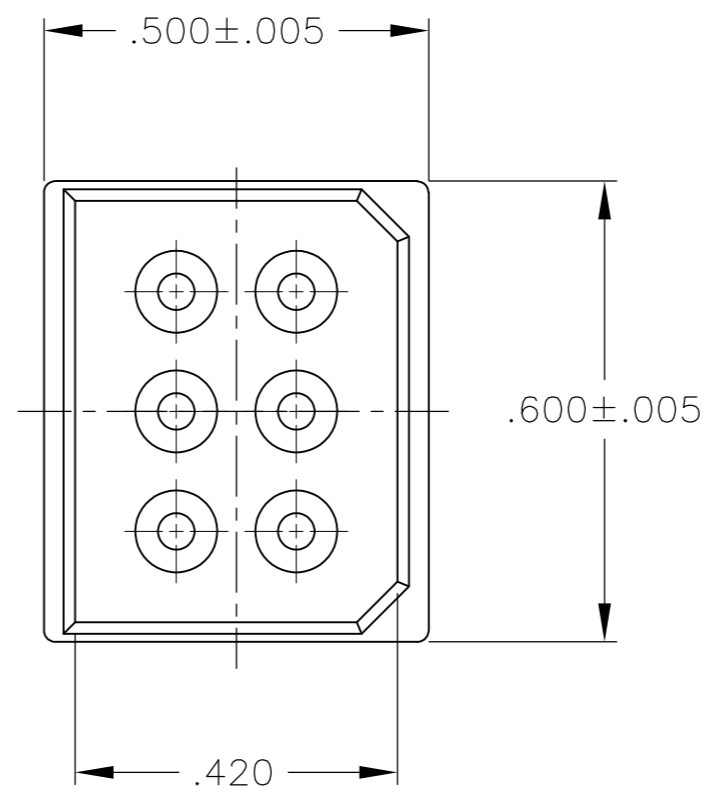
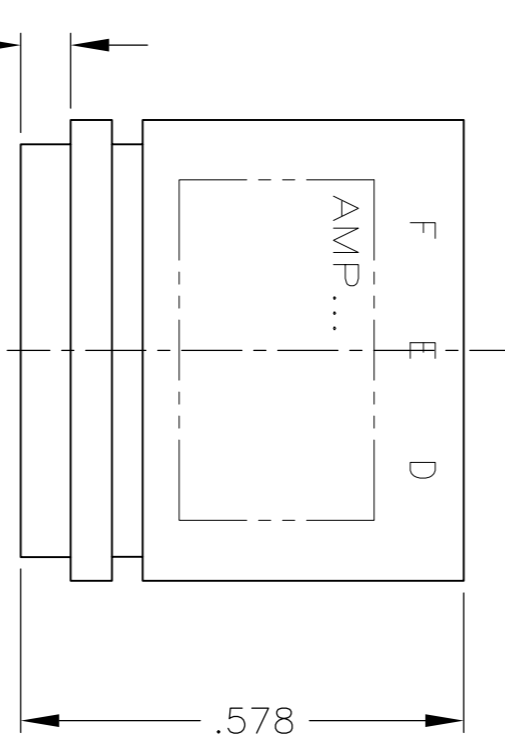
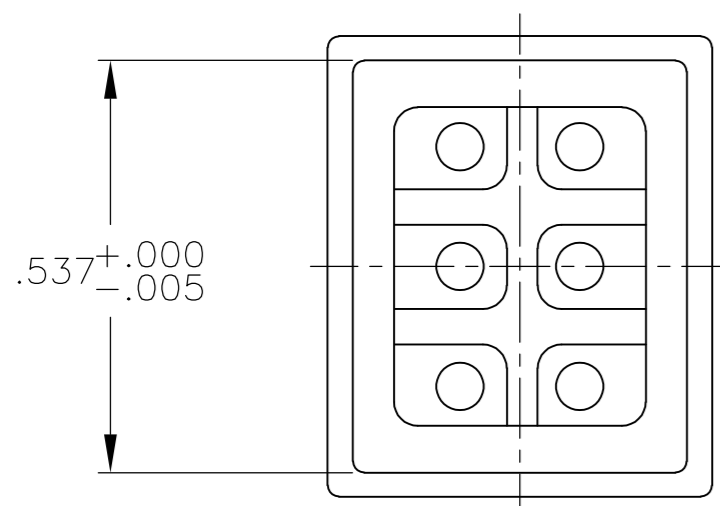
THIS DRAWING IS UNPUBLISHED. RELEASED FOR PUBLICATION  
 © COPYRIGHT BY TYCO ELECTRONICS CORPORATION. ALL RIGHTS RESERVED.

LOC	DIST	REVISIONS			
P	LTR	DESCRIPTION	DATE	DWN	APVD
DF	S0				
	C	REV PER ECO-07-021513	14SEP07	PY	DE

#22 GA. SOCKET CONTACT  
 QTY = 6  
 (WILL ACCEPT 22 TO 28  
 WIRE RANGE)



$.062^{+.005}_{-.000}$



1 SOCKETS ARE BONDED IN HOUSING. (6 PLC)

862015-1  
 PART NO.

THIS DRAWING IS A CONTROLLED DOCUMENT.		DWN C.C.THOMAS 04DEC03	Tyco Electronics Corporation Harrisburg, PA 17105-3608																		
DIMENSIONS: INCHES		CHK D.EABY 12-5-03	NAME RECEPTACLE KIT,6 PIN,LGH																		
TOLERANCES UNLESS OTHERWISE SPECIFIED:		APVD D.EABY 12-5-03	PRODUCT SPEC																		
<table border="0"> <tr><td>0 PLC</td><td>±</td><td>-</td></tr> <tr><td>1 PLC</td><td>±</td><td>-</td></tr> <tr><td>2 PLC</td><td>±</td><td>-</td></tr> <tr><td>3 PLC</td><td>±</td><td>.010</td></tr> <tr><td>4 PLC</td><td>±</td><td>-</td></tr> <tr><td>ANGLES</td><td>±</td><td>-</td></tr> </table>		0 PLC	±	-	1 PLC	±	-	2 PLC	±	-	3 PLC	±	.010	4 PLC	±	-	ANGLES	±	-	APPLICATION SPEC	
0 PLC	±	-																			
1 PLC	±	-																			
2 PLC	±	-																			
3 PLC	±	.010																			
4 PLC	±	-																			
ANGLES	±	-																			
MATERIAL HOUSING: POLYESTER		WEIGHT -	SIZE A2	CAGE CODE 00779																	
FINISH -		DRAWING NO 862015		RESTRICTED TO -																	
CUSTOMER DRAWING		SCALE 4:1	SHEET 1 of 1	REV C																	