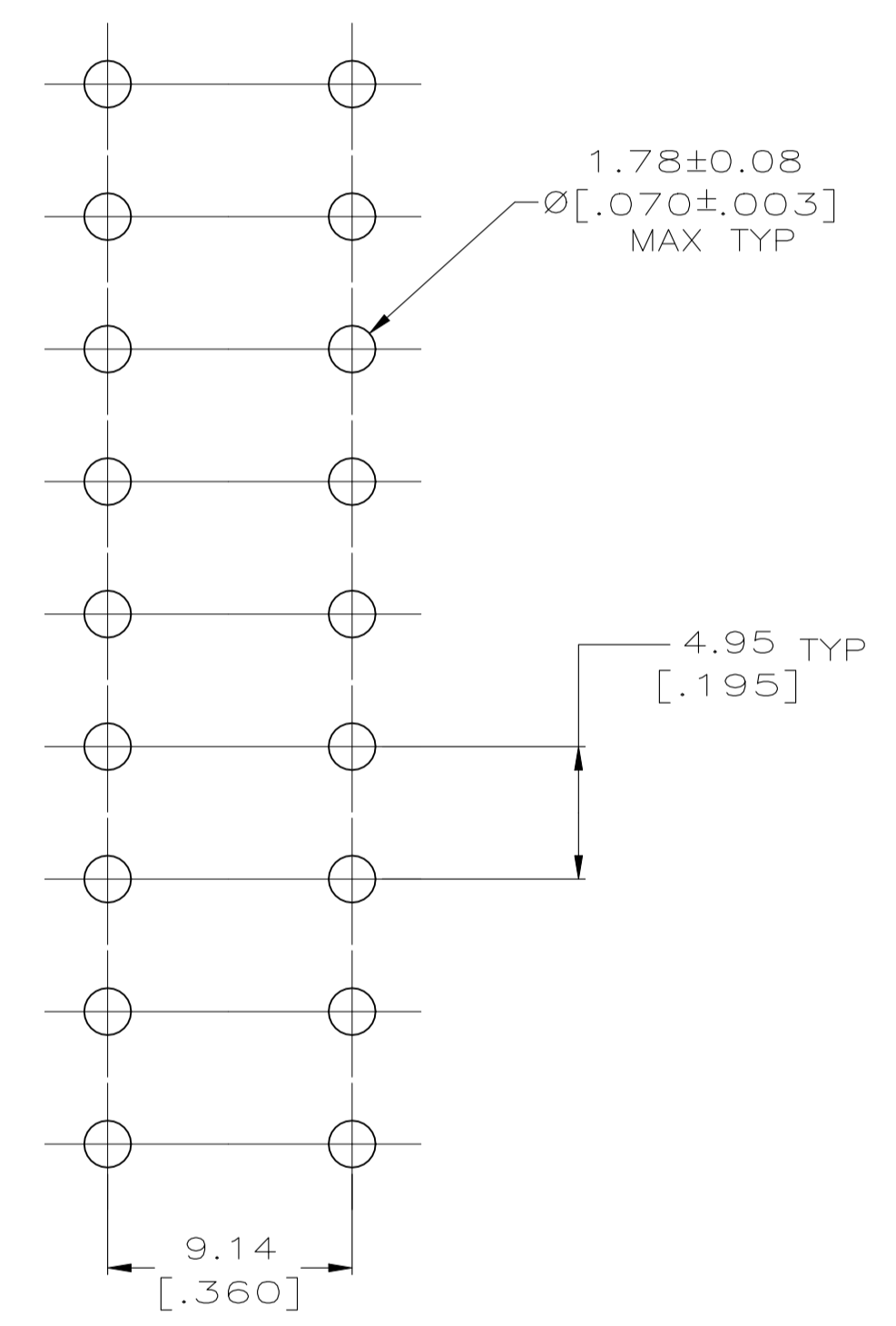
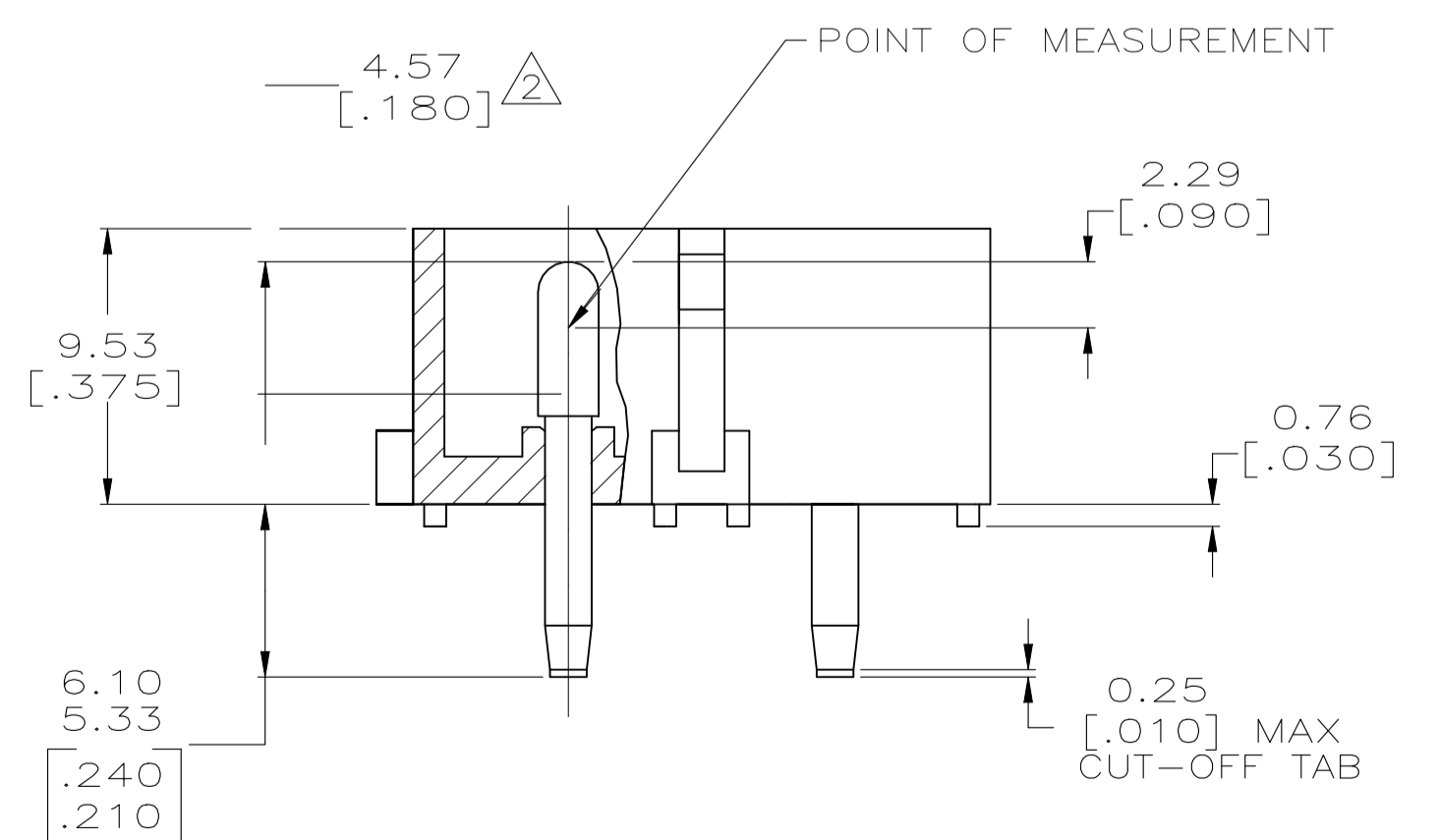
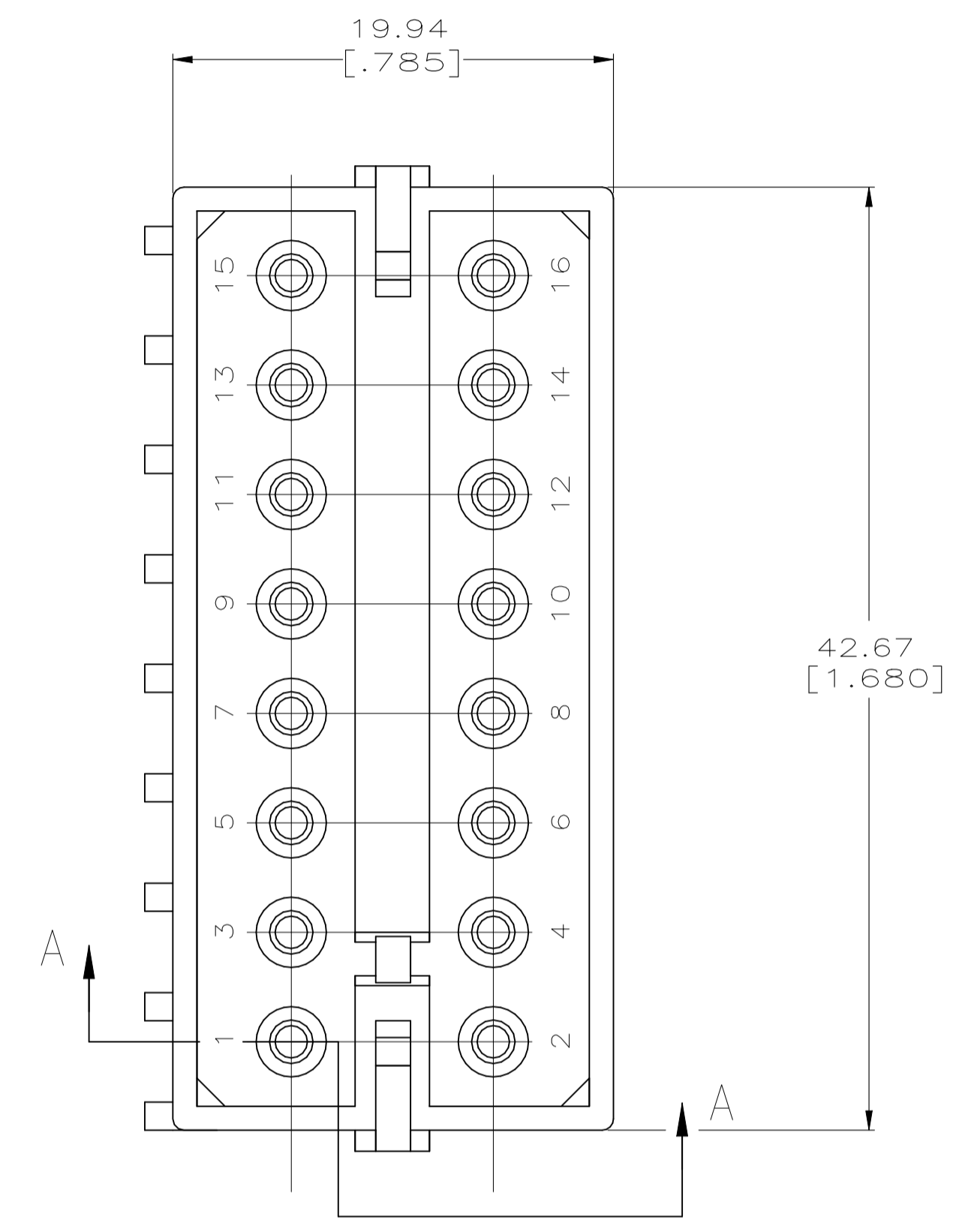


LOC		DIST		REVISIONS				DATE	APPD
CM	53	P	F	ZONE	LTR	DESCRIPTION			
				N1		REVISED PER ECR-21-117185	25OCT2021	VS	

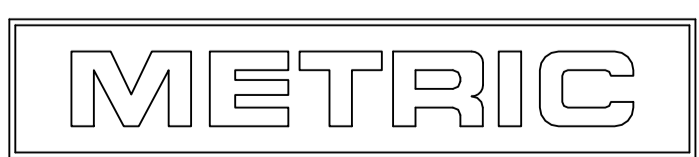


RECOMMENDED MOUNTING HOLE PATTERN FOR 3.18 [.125] THICK P.C. BOARD



SECTION A-A

- PARTS MUST COMPLY WITH AMP SOLDERABILITY SPECIFICATION 109-11-3.
- CONTACT IS PLATED OVERALL WITH 0.00127 [.000050] NICKEL, THEN 0.00076 [.00030] GOLD OVER CONTACT LENGTH INDICATED AND MATTE TIN ON SOLDER TAIL END.
- DIMENSIONS IN BRACKETS ARE IN INCHES.
- DIMENSION SHOWN REPRESENT PRODUCT IN DRY CONDITION. ADDITIONAL 2% GROWTH DUE TO END USE LOCATION MOISTURE ABSORPTION MAY OCCUR AND SHOULD BE ACCOUNTED FOR.



THIS DRAWING IS A CONTROLLED DOCUMENT FOR AMP INCORPORATED. IT IS SUBJECT TO CHANGE AND THE CONTROLLING ENGINEERING ORGANIZATION SHOULD BE CONTACTED FOR THE LATEST REVISION.

COPPER ALLOY, GOLD Δ		NYLON, 6/6, NATURAL	350427-2
COPPER ALLOY, PRE-TIN		NYLON, 6/6, NATURAL	350427-1
PIN CONTACT MATERIAL AND FINISH		HOUSING MATERIAL AND COLOR	PART NO
DO NOT SCALE PRINT. UNLESS SPECIFIED		AMP AMP Incorporated Harrisburg, PA 17105-3608	
DIMENSIONS IN mm [INCHES]		NAME	
TOLERANCES ON :		HEADER ASSEMBLY, 16 CIRCUIT, COMMERCIAL MATE-N-LOK™	
2 PLC DEC ± 0.13 [.005]		SIZE	
3 PLC DEC ± -		CAGE CODE	
ANGLES ± -		DRAWING NO	
MATERIAL		D 00779 C-350427	
SEE TABLE		SCALE 4:1	
FINISH		SHEET 1 OF 1	
SEE TABLE		CUSTOMER DRAWING	