

MATERIAL AND FINISH:

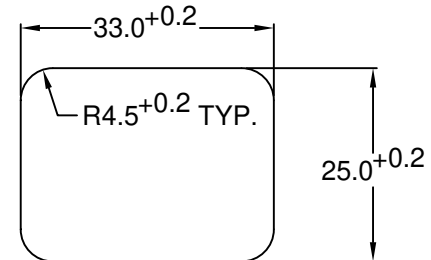
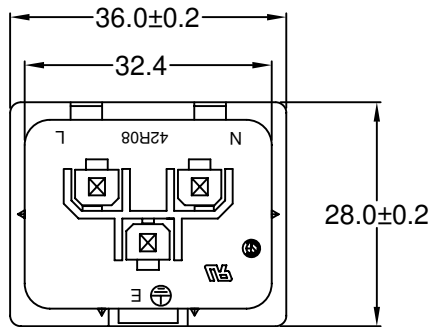
Insulator: Polycarbonate, UL-94V-0 rated
Contacts: Brass, Nickel plated

ELECTRICAL SPECIFICATIONS:

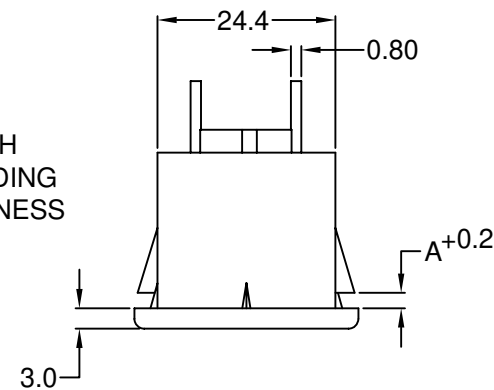
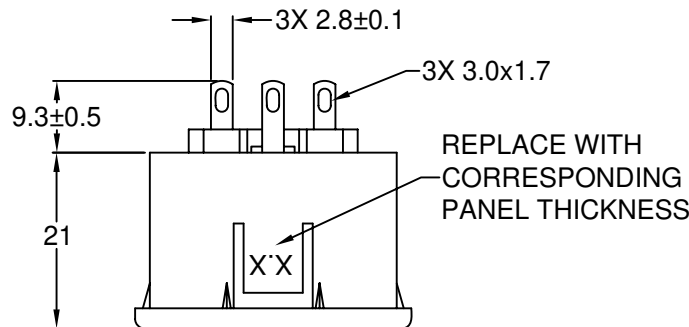
Current rating: 16 A
Voltage rating: 250 VAC
Current rating: 20 A
Voltage rating: 250 VAC
Insulation resistance: 100 Mohm min. at 500 VDC
Dielectric withstanding voltage: 2000 VAC for one minute

MECHANICAL SPECIFICATIONS:

Recommended Soldering Temp: 235°C
Recommended Soldering Time: 5 sec. max.



RECOMMENDED PANEL CUTOUT



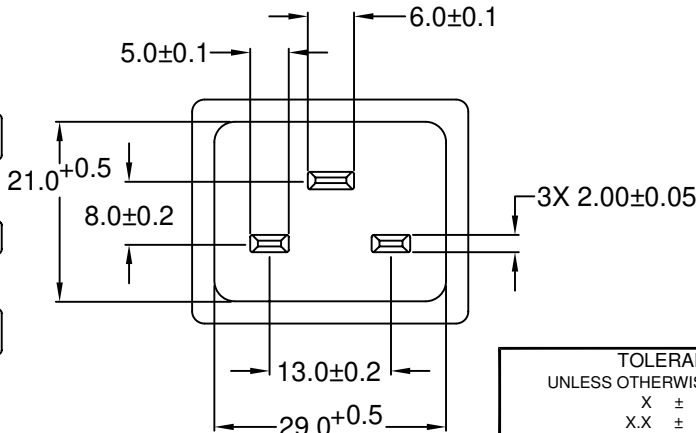
ORDERING CODE:

42R08-3 -
 1 2 3

- 1) COLOR
1 = BLACK
2 = GRAY

2) ELECTRICAL CIRCUIT CONFIGURATION

- 1 = 20A 250V 70°C
2+GROUND
- 2 = 20A 250V 155°C
2+GROUND
- 4 = 20A 250V 70°C
2 POLE



P/N	A	MAX. PANEL THICKNESS
42R08-3X2X-100	1.0	1.0
42R08-3X2X-150	1.5	1.5
42R08-3X2X-200	2.0	2.0
42R08-3X2X-250	2.5	2.5

ADDITIONAL PANEL THICKNESS AVAILABLE ON REQUEST

REV	DATE	CHANGE			CHNG CHECK APPR		
		ADD SOLDER TEMP & TME	ADD 1.0 PANEL & RoHS	TERM. DIM.	PB	TD	PB
A	10/8/04						
B	7/2/07						
C	7/17/09						

TOLERANCE UNLESS OTHERWISE SPECIFIED	
X	± 1
X.X	± 0.4
X.XX	± 0.20

DRAWN BY	GQ	DATE:	08/24/01
CHECK BY	TD	DATE:	08/29/01
APPR BY	PB	DATE:	08/29/01

RoHS COMPLIANT

Power Dynamics, Inc.
Phone: 973 560-0019 Whippany, New Jersey Fax: 973 560-0076

PART: 16/20A IEC 60320 APPL. INLET; SOLDER TERMINALS; SNAP-IN, PANEL MOUNT

42R08-3X2X-XXX

SIZE: A SCALE: NTS ALL DIMENSIONS FOR REFERENCE ONLY DIMENSIONS ARE IN MILLIMETERS

SHEET 1 of 1 REV: C