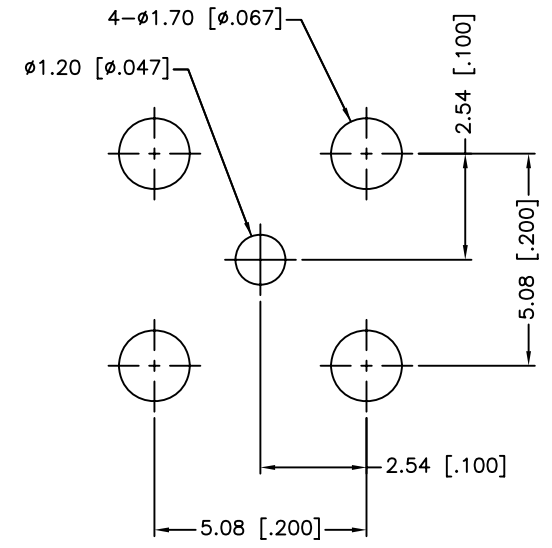
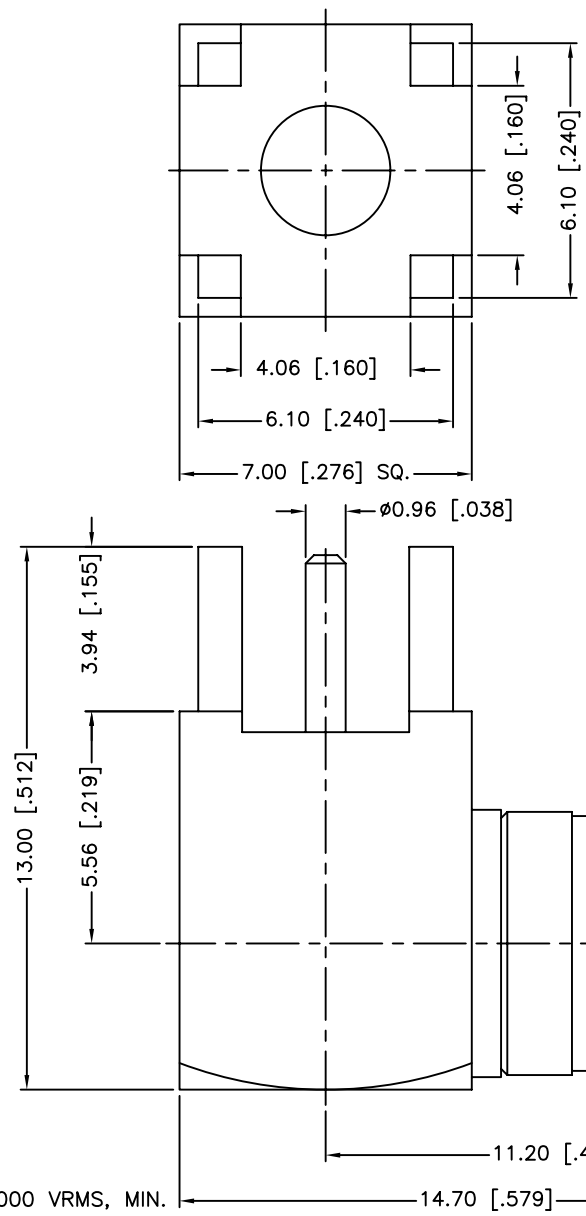


REV.	DATE	ECR NO.	DESCRIPTION
NC	09/02/99	XXXXXX	INITIAL RELEASE
A	07/31/13	2506	UPDATE DRAWING FORMAT



PCB MOUNTING HOLE

1. IMPEDANCE: 50 OHM
2. FREQUENCY RANGE: 0-4 GHZ
3. VSWR: 1.5 MAX.
4. DIELECTRIC WITHSTANDING VOLTAGE: 1000 VRMS, MIN.
5. DURABILITY: 500 CYCLES MIN.
6. TEMPERATURE RANGE: -65°C TO +165°C

DESCRIPTION	MATERIAL	FINISH	QTY
7 INSULATOR	PTFE	NATURAL	1
6 RETAINER RING	BER. COPPER	NATURAL	1
5 CONTACT PIN	BER. COPPER	GOLD	1
4 INSULATOR	PTFE	NATURAL	1
3 HOUSING	BRASS	NICKEL	1
2 BODY	BRASS	NICKEL	1
1 SHEEL	BRASS	NICKEL	1

UNLESS OTHERWISE SPECIFIED DIMENSIONS ARE IN MILLIMETERS. DIMENSIONS IN [] ARE IN INCHES AND FOR CUSTOMER REFERENCE ONLY.
 UNLESS OTHERWISE SPECIFIED
 TOLERANCES FOR MILLIMETERS ARE:
 <0.5 ± 0.05mm
 0.5 - 6mm ± 0.10mm
 6 - 30mm ± 0.20mm
 30 - 120mm ± 0.30mm
 ANGLES ± 1°
 UNLESS OTHERWISE SPECIFIED
 TOLERANCES FOR INCHES ARE:
 <.020 ± 0.002"
 .020 - .236 = ± 0.004"
 .236 - 1.180 = ± 0.007"
 1.180 - 4.724 = ± 0.012"
 ANGLES ± 1°
 DO NOT SCALE DRAWING

APPROVALS	DATE
DRAWN M.ZHANG	07/31/13
CHECKED	
ISSUED	
SHEET 1 OF 1	
CAD FILE	C:/CONNEX/142140.DWG

Amphenol Connex

PART DESCRIPTION
SMB R/A P.C. MOUNT PLUG

PART NO.
142140

DWG. NO. 142140.DWG	REV. A	SIZE A	SCALE NA
---------------------	--------	--------	----------