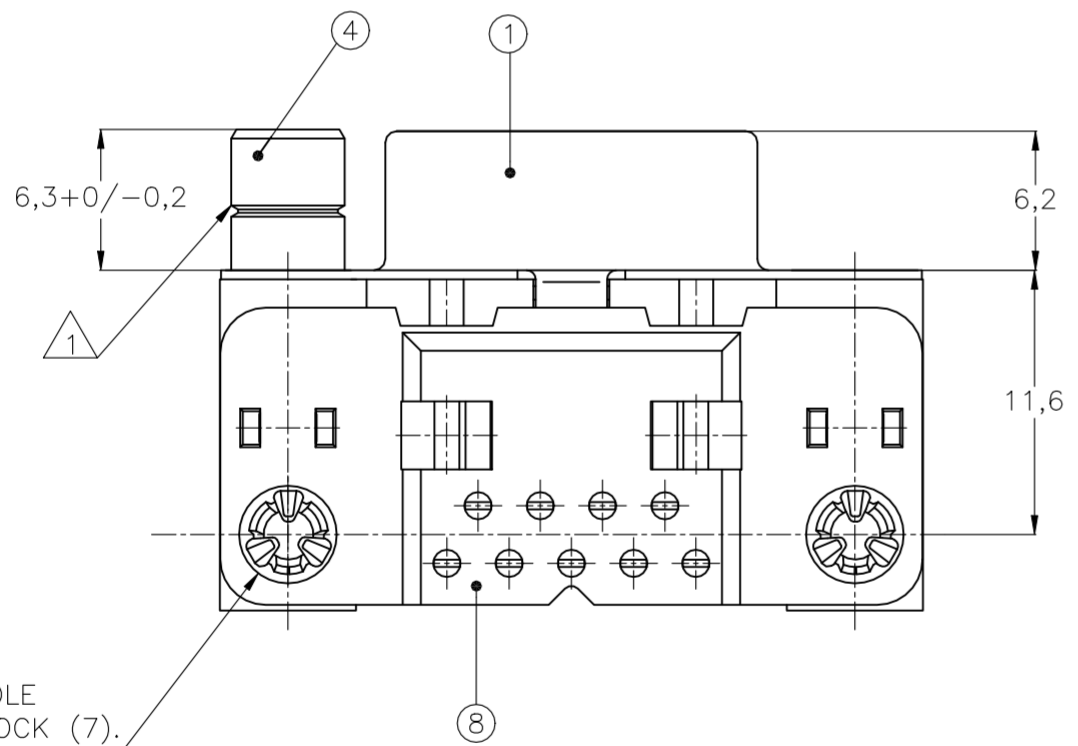
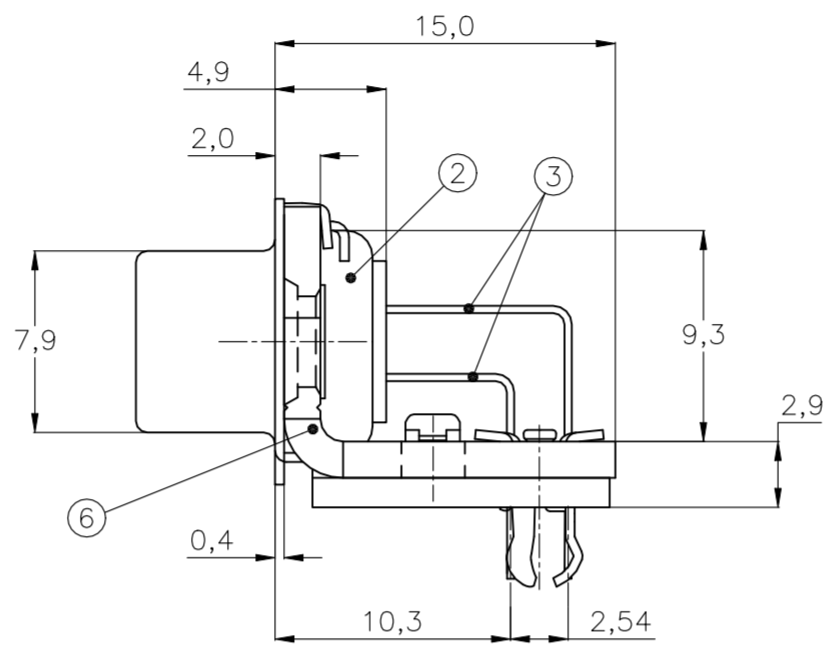
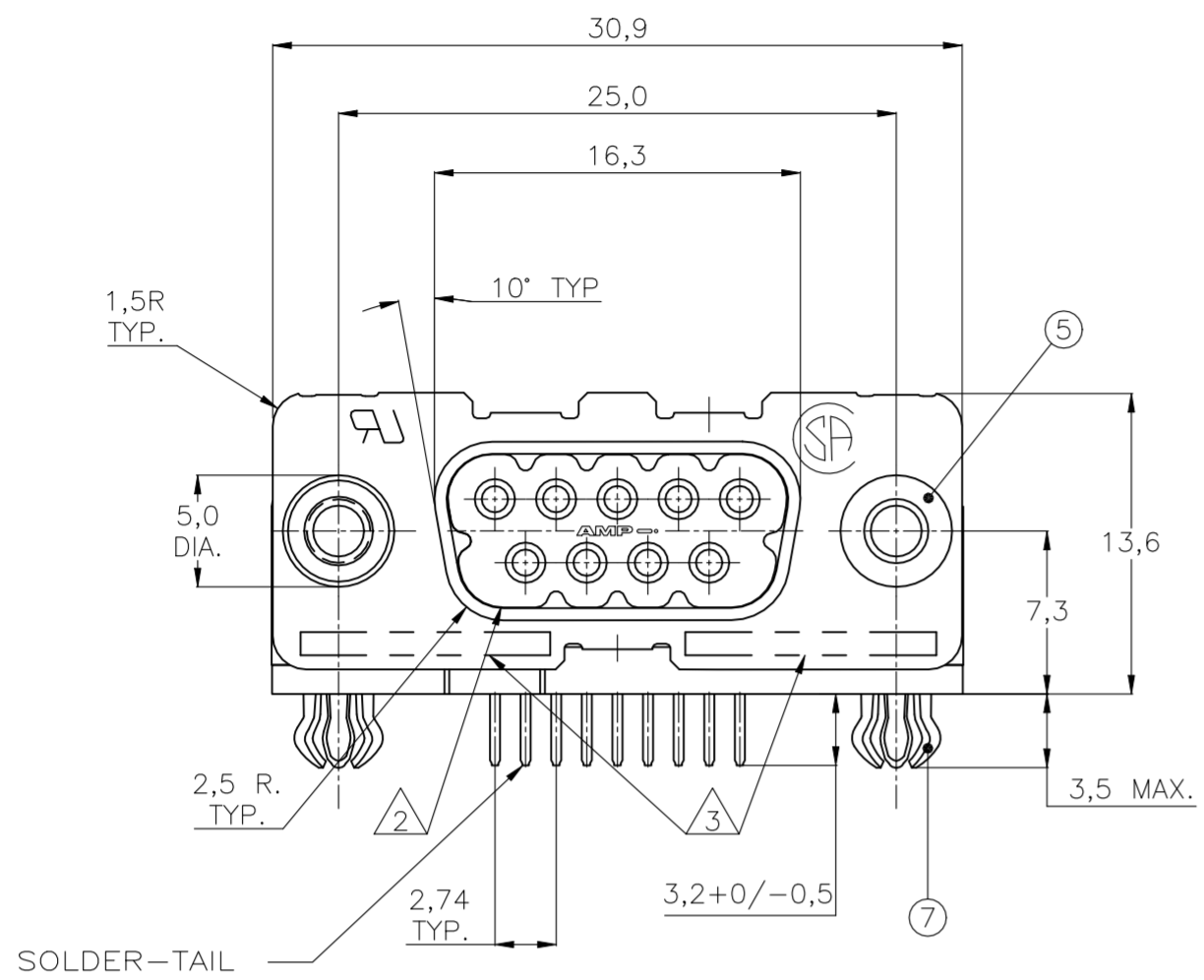


REVISIONS					
P	LTR	DESCRIPTION	DATE	DWN	APVD
	M1	REVISED AS PER ECN-22-178936	12OCT2022	AB	SZ

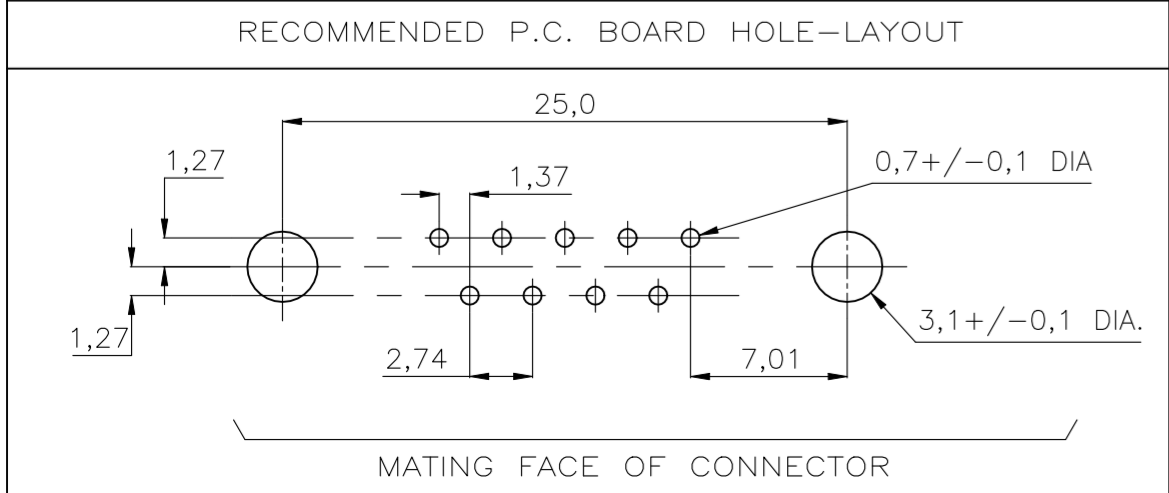


3,4 DIA. HOLE WITHOUT BOARDLOCK (7).

ACCESSORIES	ITEM NO.	DESCRIPTION OF ACCESSORY	REVISIONS																
			106505-2	1-106505-2	2-106505-2	3-106505-2	4-106505-2	5-106505-2	6-106505-2	7-106505-2	8-106505-2	9-106505-2							
	5	BUSHING WITH THROUGH-HOLE 3,1 DIA.								2									
	5	BUSHING WITH INNER THREAD 4-40 UNC			2										2				
	5	BUSHING WITH INNER THREAD M3				2												2	
	4	FEMALE SCREWLOCK WITH 4-40 UNC								2									2
	4	FEMALE SCREWLOCK WITH M3									2								2
	7	BOARDLOCK	2	2	2	2	2												

- ① GROOVE INDICATES VERSION WITH 4-40 UNC INNER THREAD; WITHOUT GROOVE INDICATES VERSION WITH M3 INNER THREAD.
- ② CAVITY IDENTIFICATION AT FRONT SIDE ONLY.
- ③ PART NUMBER AND DATE CODE.
- 4. AIR AND CREEPAGE DISTANCES ACCORDING TO DIN 41652.
- ⑤ CONTACT FINISH: GOLD FLASH OVER PALLADIUM NICKEL PLATE OR GOLD PLATE ON MATING SURFACES, TIN PLATE ON THE SOLDER-TAILS, NICKEL UNDERPLATE ON THE ENTIRE CONTACT. MATING SURFACE FINISH MEETS PERFORMANCE LEVEL 2 PER DIN 41652.

- ITEM NO./MATERIAL :
- ① SHELL : BRIGHT TIN PLATED STEEL
 - ② HOUSING : GLASS FILLED POLYESTER, COLOR : BLACK
 - ③ CONTACTS : PHOSPHOR BRONZE (PLATING : SEE NOTES ABOVE)
 - ④ FEMALE SCREWLOCK : TIN PLATED STEEL (INNER THREAD 4-40 UNC OR M3)
 - ⑤ BUSHING : TIN PLATED STEEL (INNER THREAD 4-40 UNC OR M3 OR 3,1 DIA THROUGH-HOLE)
 - ⑥ BRACKET : TIN PLATED STEEL
 - ⑦ BOARDLOCK : TIN PLATED PHOSPHOR BRONZE
 - ⑧ POST ALIGNMENT PLATE : GLASS FILLED NYLON COLOR : BLACK



THIS DRAWING IS A CONTROLLED DOCUMENT. DIMENSIONING AND TOLERANCING PER ASME Y14.5M-2009		DWN D. KESSLER	14JAN99			TE Connectivity			
DIMENSIONS: mm		CHK W. SOOMERS	APVD			NAME		HD-20 SIZE 1 RIGHT ANGLE RECEPTACLE HEADER; MARK II+	
TOLERANCES UNLESS OTHERWISE SPECIFIED:		PRODUCT SPEC		APPLICATION SPEC		SIZE	CAGE CODE	DRAWING NO	RESTRICTED TO
0 PLC ± -		-		-		A2	00779	C=106505	-
1 PLC ± 0.3		-		-		SCALE		SHEET	REV
2 PLC ± 0.15		-		-		NTS		1 of 1	M1
3 PLC ± -		-		-		CUSTOMER DRAWING			
4 PLC ± -		-		-					
ANGLES ± 2°		-		-					
MATERIAL		FINISH		WEIGHT		CUSTOMER DRAWING			
-		-		0.000000					