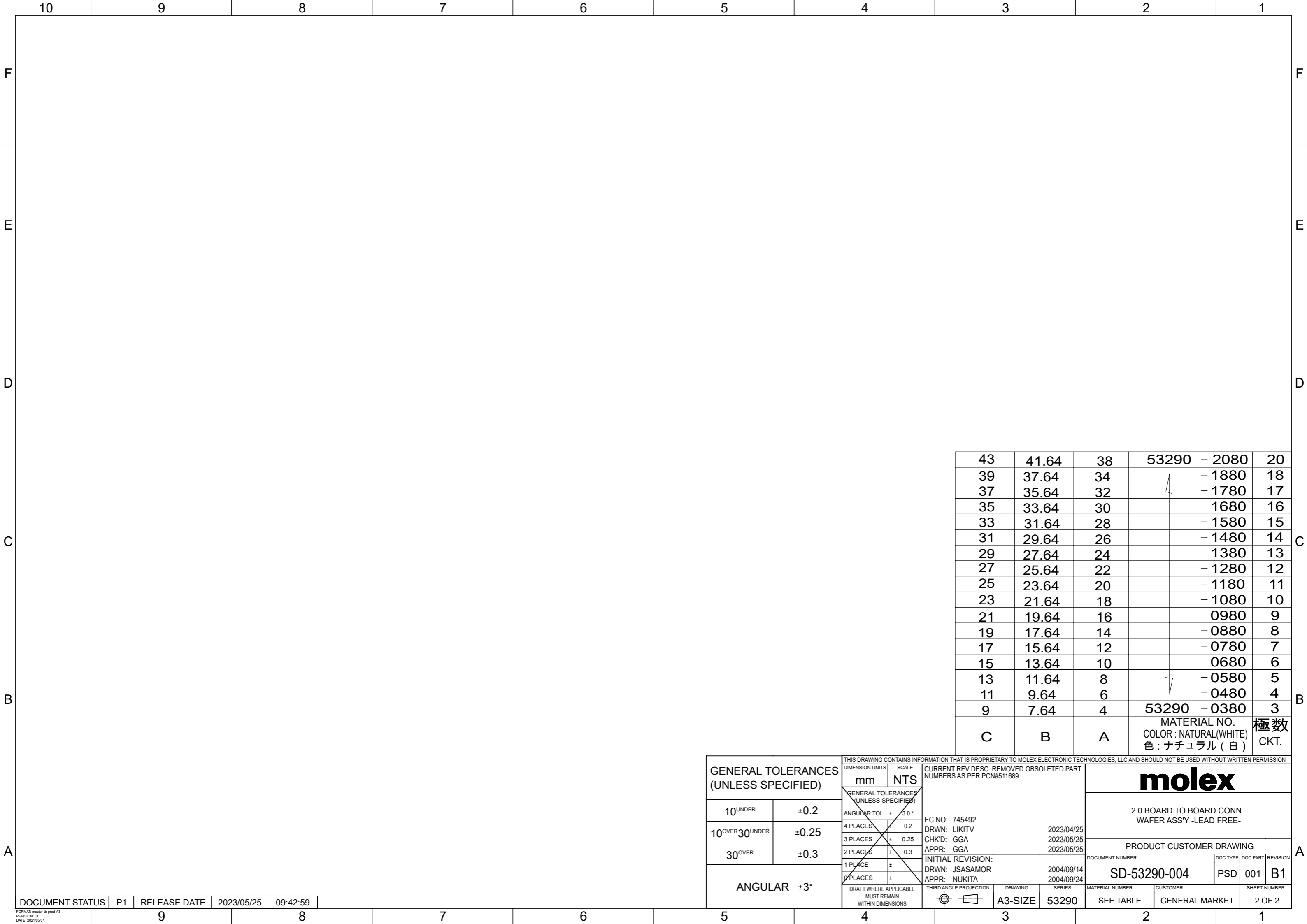


注記 NOTES

- 材料 MATERIAL  
ウエハー PBT (ガラス 15% 入り)  
WAFER G.F. 15%  
UL94V-0  
ピン : 黄銅, 錫メッキ  
PIN : BRASS, TIN
- 嵌合相手 : 52418 シリ - ズ  
MATE WITH : 52418 SERIES
- △ キンクは全ピンに交互に付加。  
SET KINK ALTERNATELY TO ALL PIN.
- 各部のソリは 0.2MAX.  
CAMBER : 0.2MAX.
- 本製品は、53290-\*\*10 の鉛フリー品である。  
THIS PRODUCT IS LEAD FREE OF 53290-\*\*10.
- 梱包仕様 PACKAGING  
53290-\*\*8\* トレー TRAY  
53290-\*\*4\* ポリ袋 POLYBAG

GENERAL TOLERANCES (UNLESS SPECIFIED)		THIS DRAWING CONTAINS INFORMATION THAT IS PROPRIETARY TO MOLEX ELECTRONIC TECHNOLOGIES, LLC AND SHOULD NOT BE USED WITHOUT WRITTEN PERMISSION			
10 <sup>UNDER</sup>	±0.2	DIMENSION UNITS	SCALE		
10 <sup>OVER</sup> 30 <sup>UNDER</sup>	±0.25	mm	NTS	CURRENT REV DESC: REMOVED OBSOLETE PART NUMBERS AS PER PCN#511689.	
30 <sup>OVER</sup>	±0.3	GENERAL TOLERANCES (UNLESS SPECIFIED)		PRODUCT CUSTOMER DRAWING	
ANGULAR ±3°		ANGULAR TOL	± 3.0°	DOCUMENT NUMBER	
		4 PLACES	± 0.2	SD-53290-004	
		3 PLACES	± 0.25	DOC TYPE	DOC PART
		2 PLACES	± 0.3	PSD	001
		1 PLACE	±	REVISION	B1
		0 PLACES	±	SHEET NUMBER	
		DRAFT WHERE APPLICABLE MUST REMAIN WITHIN DIMENSIONS		1 OF 2	
		THIRD ANGLE PROJECTION		MATERIAL NUMBER	
		DRAWING		CUSTOMER	
		A3-SIZE		SEE TABLE	
		SERIES		GENERAL MARKET	
		53290			



43	41.64	38	53290 - 2080	20
39	37.64	34	- 1880	18
37	35.64	32	- 1780	17
35	33.64	30	- 1680	16
33	31.64	28	- 1580	15
31	29.64	26	- 1480	14
29	27.64	24	- 1380	13
27	25.64	22	- 1280	12
25	23.64	20	- 1180	11
23	21.64	18	- 1080	10
21	19.64	16	- 0980	9
19	17.64	14	- 0880	8
17	15.64	12	- 0780	7
15	13.64	10	- 0680	6
13	11.64	8	- 0580	5
11	9.64	6	- 0480	4
9	7.64	4	53290 - 0380	3
C	B	A	MATERIAL NO. COLOR : NATURAL(WHITE) 色 : ナチュラル (白)	極数 CKT.

GENERAL TOLERANCES (UNLESS SPECIFIED)		THIS DRAWING CONTAINS INFORMATION THAT IS PROPRIETARY TO MOLEX ELECTRONIC TECHNOLOGIES, LLC AND SHOULD NOT BE USED WITHOUT WRITTEN PERMISSION						
		DIMENSION UNITS	SCALE				CURRENT REV DESC: REMOVED OBSOLETE PART NUMBERS AS PER PCN#511689.	
10 <sup>UNDER</sup>	±0.2	mm	NTS	EC NO: 745492 DRWN: LIKITV 2023/04/25 CHK'D: GGA 2023/05/25 APPR: GGA 2023/05/25				
GENERAL TOLERANCES (UNLESS SPECIFIED)		GENERAL TOLERANCES (UNLESS SPECIFIED)						
10 <sup>OVER</sup> 30 <sup>UNDER</sup>	±0.25	ANGULAR TOL ± 3.0°		INITIAL REVISION: DRWN: JSASAMOR 2004/09/14 APPR: NUKITA 2004/09/24				
30 <sup>OVER</sup>	±0.3	4 PLACES ± 0.2	3 PLACES ± 0.25					
ANGULAR ±3°		2 PLACES ± 0.3	1 PLACE ±	DOCUMENT NUMBER: SD-53290-004 DOC TYPE: PSD DOC PART: 001 REVISION: B1				
		0 PLACES ±	0 PLACES ±					
DRAFT WHERE APPLICABLE MUST REMAIN WITHIN DIMENSIONS		THIRD ANGLE PROJECTION		DRAWING: A3-SIZE	SERIES: 53290	MATERIAL NUMBER: SEE TABLE	CUSTOMER: GENERAL MARKET	SHEET NUMBER: 2 OF 2