

101F

MINIATURE EPOXY POTTED AUDIO TRANSFORMER

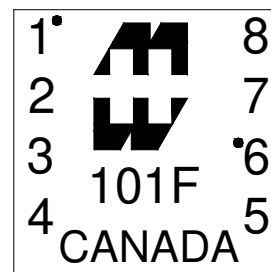
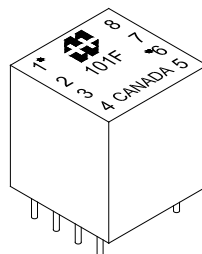
Pin type, P.C. board mount, net weight of only 0.1 oz.
 Rugged black epoxy potted construction produces a completely sealed unit withstanding severe environmental conditions.
 Secondary may be used as primary and primary as secondary.
 Power level: 100mw @ 300 Hz. to 100 KHz.

-Freq. range @ +10 dbm is 200 Hz. to 100 KHz. +/- 0.5db

-Freq. range @ +15 dbm is 200 Hz. to 100 KHz. +/- 0.5db

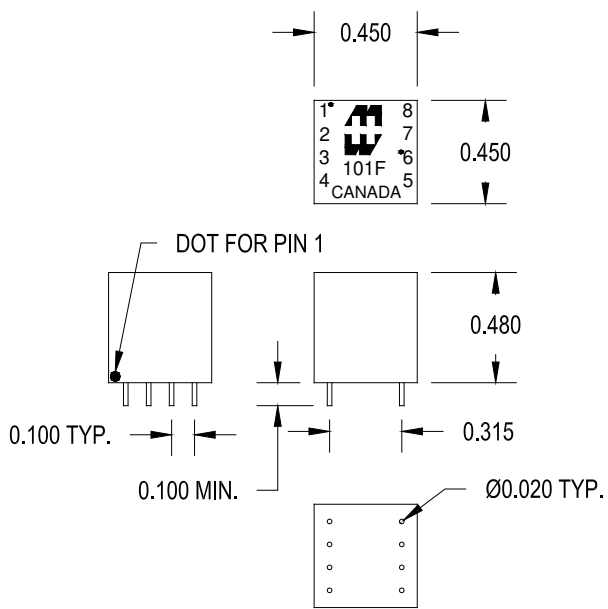
-Freq. range @ +20 dbm is 300 Hz. to 100 KHz. +/- 0.5db

-Freq. measurements with no D.C. saturation.

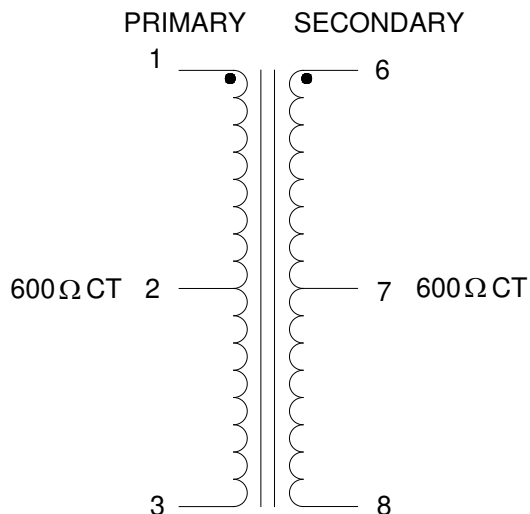


ELECTRICAL SPECIFICATIONS

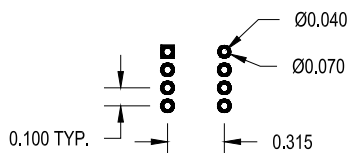
Characteristic	Typical
Input Impedance	600 Ω CT
Output Impedance	600 Ω CT
Output Power	0.100 Watts
DCR	
Primary 1-3	44 Ω (22 Ω /22 Ω)
Secondary 6-8	52 Ω (26 Ω /26 Ω)
Inductance	@ 1.0 kHz, 1.0 V OC
Primary	288 mH
Secondary	288 mH
Leakage Inductance	0.40 mH
Impedance	@ 1.0 kHz, 1.0 V OC
Primary	2.86 K Ω
Secondary	2.86 K Ω
Frequency Response	± 0.5 db from 200Hz to 100KHz
Turns ratio	1:1
Dielectric Strength	100 Vrms
No Connection	Pins 4 & 5
Storage Temp	-40 To 105°C**
Operating Temp	-40 To 85°C**



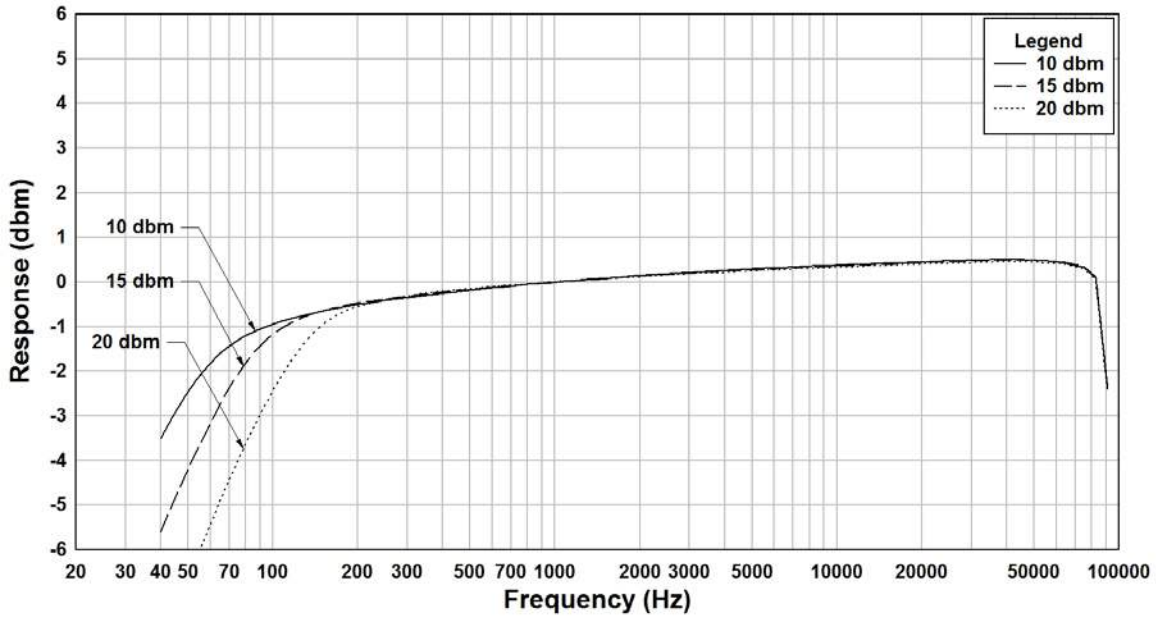
SCHEMATIC DIAGRAM



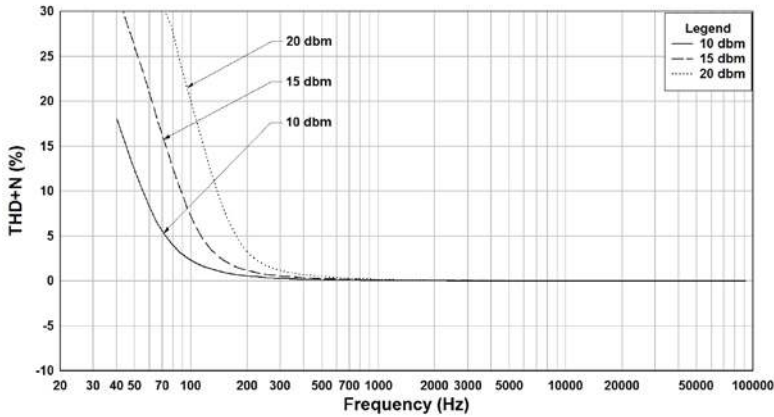
PCB LAYOUT



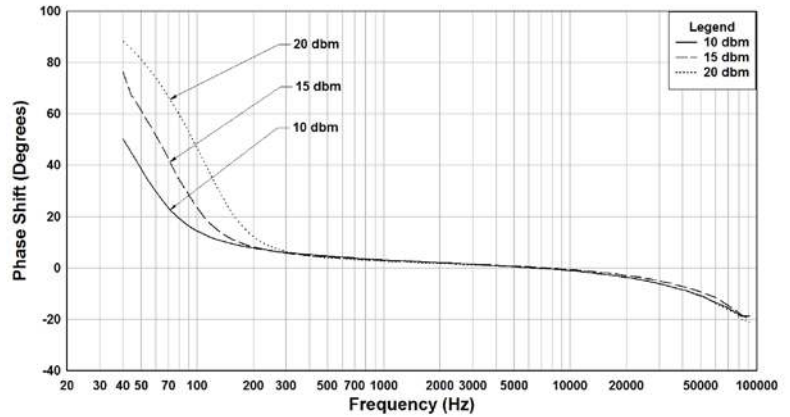
101F Frequency Response



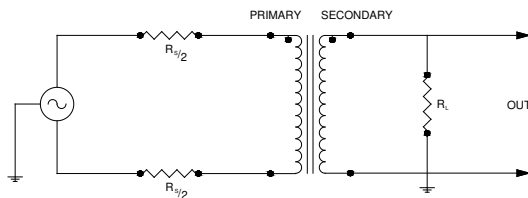
101F THD+N



101F Phase shift



TYPICAL TEST CIRCUIT



Measurement instruments
 Hp4192a impedance analyzer
 Hp3456a DVM
 Keithley 2002 DVM
 D scope series iii audio analyzer

** The epoxy that is used to cast these parts has a workable temperature range of -40°C to $+105^{\circ}\text{C}$ Under a normal rate of change, this does not include thermal shock. Variations in the transformer materials and environmental conditions may reduce the workable temperature range.

This drawing and the information in it is the property of Hammond Manufacturing. It may not be reproduced, transmitted or used in any manner whatsoever without the written permission of Hammond Manufacturing. Data subject to change without notice.