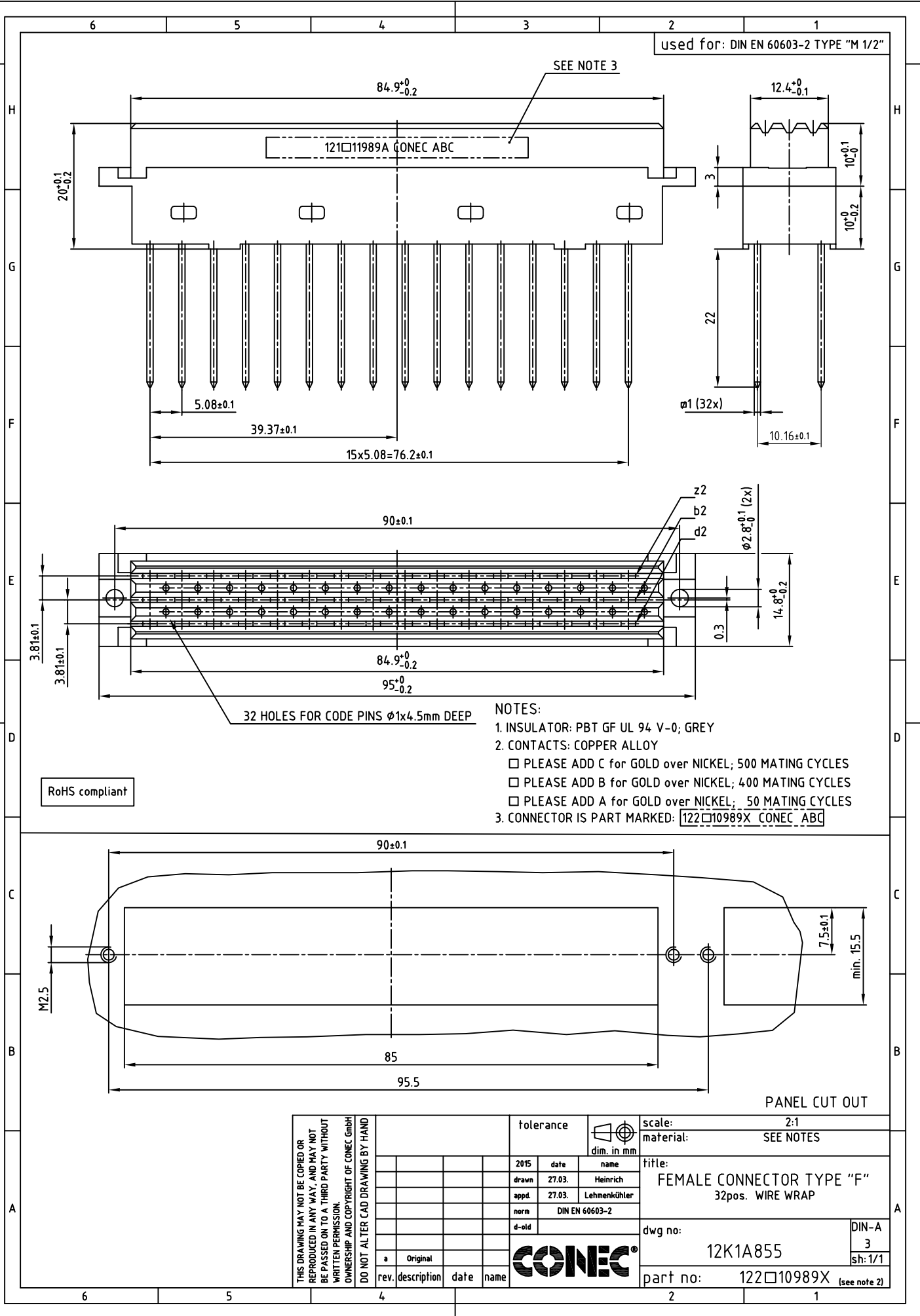


used for: DIN EN 60603-2 TYPE "M 1/2"



32 HOLES FOR CODE PINS $\phi 1 \times 4.5$ mm DEEP

NOTES:

- 1. INSULATOR: PBT GF UL 94 V-0; GREY
- 2. CONTACTS: COPPER ALLOY
 - PLEASE ADD C for GOLD over NICKEL; 500 MATING CYCLES
 - PLEASE ADD B for GOLD over NICKEL; 400 MATING CYCLES
 - PLEASE ADD A for GOLD over NICKEL; 50 MATING CYCLES
- 3. CONNECTOR IS PART MARKED: **122□10989X CONEC ABC**

RoHS compliant

PANEL CUT OUT

THIS DRAWING MAY NOT BE COPIED OR REPRODUCED IN ANY WAY, AND MAY NOT BE PASSED ON TO A THIRD PARTY WITHOUT WRITTEN PERMISSION. OWNERSHIP AND COPYRIGHT OF CONEC GMBH DO NOT ALTER CAD DRAWING BY HAND

tolerance		dim. in mm	
2015	date	name	
drawn	27.03.	Heinrich	
appd.	27.03.	Lehmenkühler	
norm	DIN EN 60603-2		
d-old			
rev.	description	date	name
a	Original		

scale:	2:1
material:	SEE NOTES
title:	
FEMALE CONNECTOR TYPE "F"	
32pos. WIRE WRAP	
dwg no:	12K1A855
part no:	122□10989X (see note 2)
DIN-A	3
sh:	1/1

