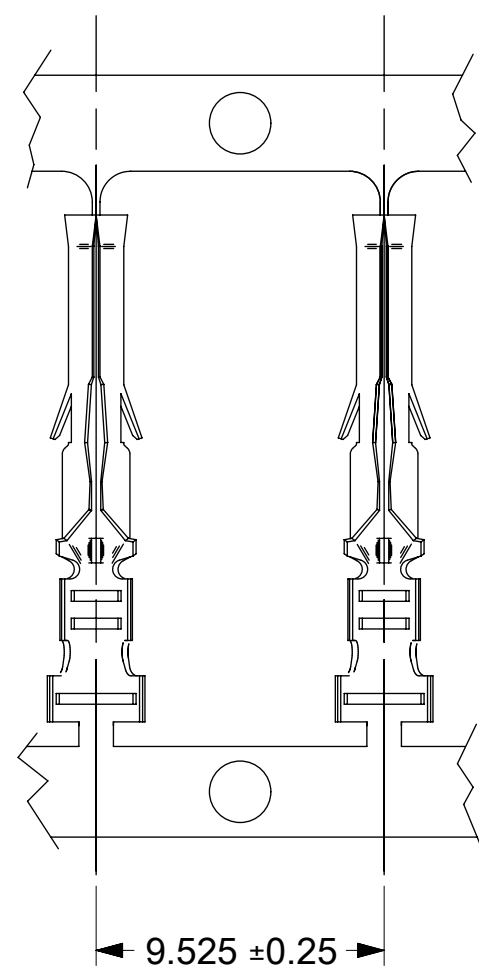
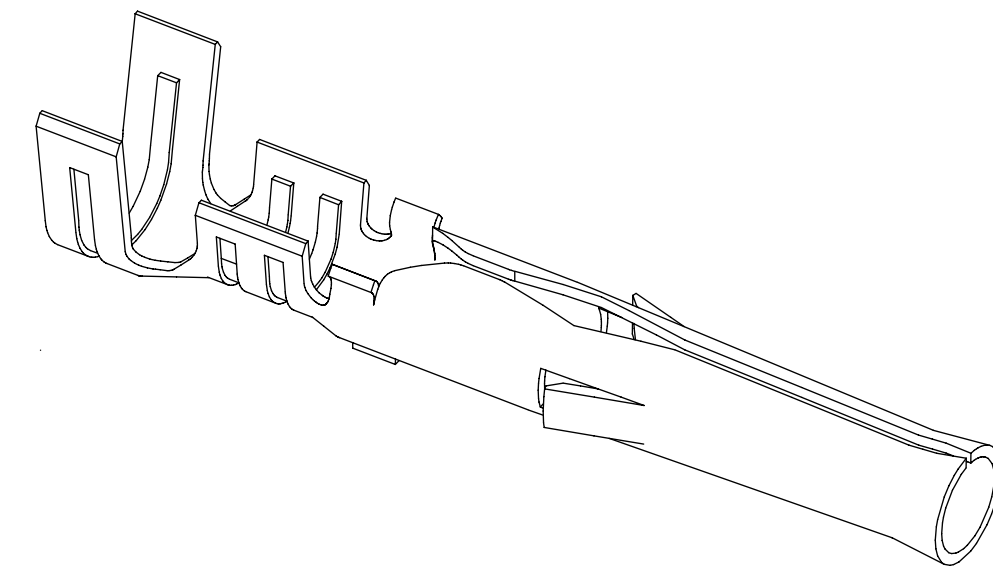
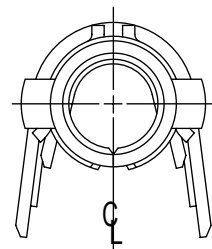
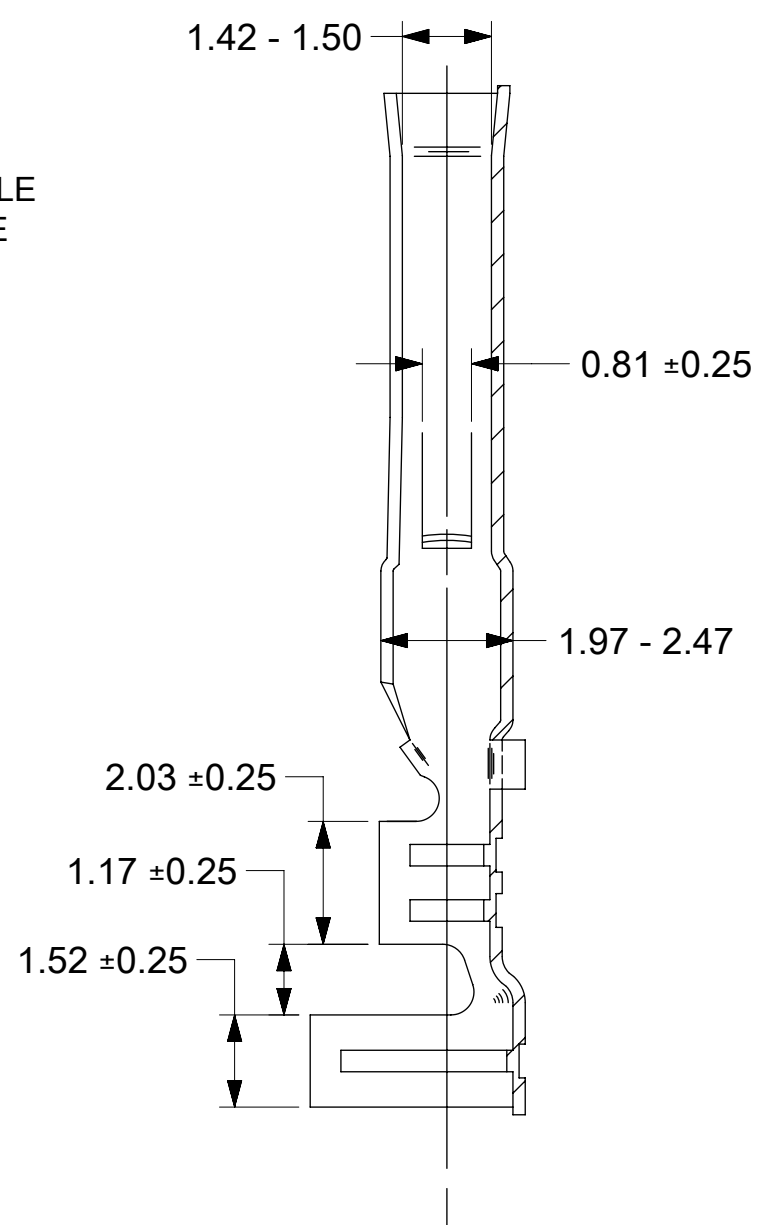
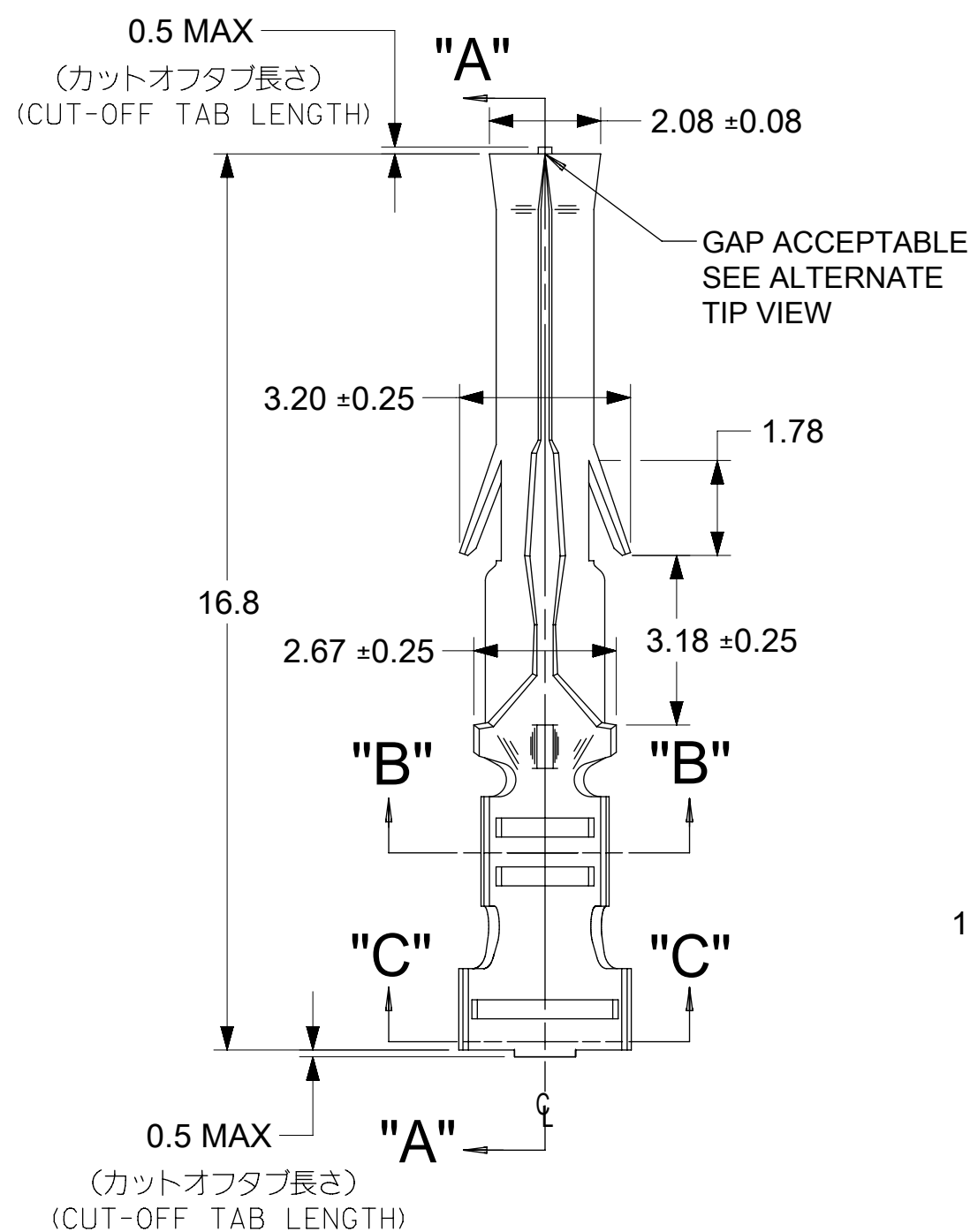


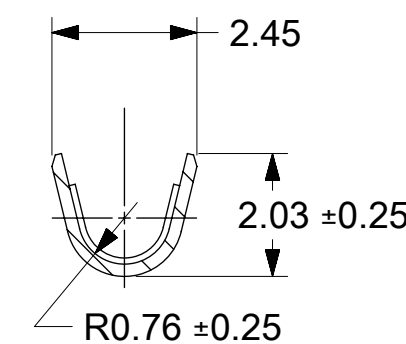
ALTERNATE TIP
GEOMETRY
SEE NOTE 7



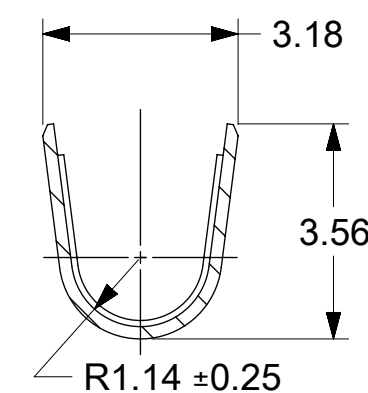
CHAIN FORM
SCALE: 4:1



SECT. "A-A"



SECT. "B-B"



SECT. "C-C"

NOTES:

1. MATERIAL: BRASS
2. FINISH: SEE CHART
3. PRODUCT SPECIFICATION: PS-02-06
4. PACKAGING INFORMATION: 15610000-PK
5. TERMINAL FOR USE WITH (1.57)/.062 DIA. SERIES HOUSINGS AND WILL ACCEPT 18 THRU 24 AWG WIRE WITH 1.5/3.1 INSULATION DIA.
6. PARTS CONFORM TO CLASS B REQUIREMENTS OF COSMETIC SPECIFICATION PS-45499-002.
7. TIP GEOMETRY IS TOOL DEPENDENT. EITHER GEOMETRY IS ACCEPTABLE.

一般公差 : ±0.4
GENERAL TOLERANCES: ±0.4

銅 (0.5 μm MIN.) 下地 錫 (0.9 μm MIN.) TIN (0.9 μm MIN.) OVER COPPER (0.5 μm MIN.)	39-00-0279	1561T	連鎖状端子 CHAIN
メッキ PLATING	EDP.NO.	ENG.NO.	形状 FORM

THIS DRAWING CONTAINS INFORMATION THAT IS PROPRIETARY TO MOLEX ELECTRONIC TECHNOLOGIES, LLC AND SHOULD NOT BE USED WITHOUT WRITTEN PERMISSION

材料 MATERIAL 黄銅 BRASS 0.2 t	仕上げ FINISH	適用電線範囲 WIRE RANGE AWG#18-#24	被覆外径 INS. RANGE φ 1.5~3.1
-------------------------------------	---------------	------------------------------------	---------------------------------

DIMENSION UNITS mm	SCALE 8:1	CURRENT REV DESC: OBSOLETE PART NUMBER AS PER PCN#509988
GENERAL TOLERANCES (UNLESS SPECIFIED)	ANGULAR TOL ± °	EC NO: 704776
4 PLACES ±	3 PLACES ±	DRWN: SUGEEB 2022/03/29
2 PLACES ±	1 PLACE ±	CHK'D: GGA 2022/05/24
0 PLACES ±	DRAFT WHERE APPLICABLE MUST REMAIN WITHIN DIMENSIONS	APPR: GGA 2022/05/24
THIRD ANGLE PROJECTION	DRAWING C-SIZE	INITIAL REVISION: DRWN: YAOYAGI 2009/02/16
	SERIES 1561	APPR: NUKITA 2009/02/17

molex

.062 DIA CRIMP FEMALE
TERMINAL

PRODUCT CUSTOMER DRAWING

DOCUMENT NUMBER SD-1561-001	DOC TYPE PSD	DOC PART 001	REVISION M1
MATERIAL NUMBER SEE TABLE	CUSTOMER GENERAL MARKET	SHEET NUMBER 1 OF 1	

DOCUMENT STATUS	P1	RELEASE DATE	2022/05/24	10:34:33
-----------------	----	--------------	------------	----------