

DSC2000

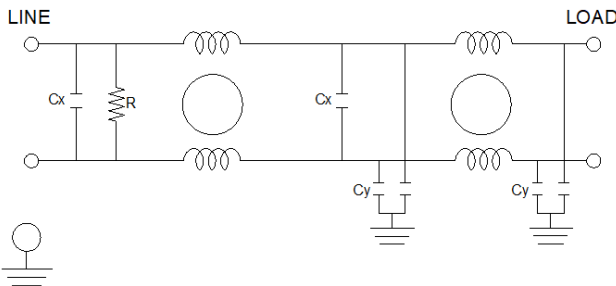
HIGH PERFORMANCE SINGLE PHASE DUAL STAGE POWER LINE FILTER

FEATURES

- » **Rated currents** include **20A**
- » Dual Stage Line Filter
- » Available with **QD** tab, **W** (wire leads) and **S** (Studs) option
- » High Performance Design
- » Agency Approved to UL1283 / 60929, CSA C22.2, EN60939
- » Y-cap value can be adjusted to fit specification



ELECTRICAL SCHEMATIC



HOW TO ORDER

DSC2000-X-Y-Z

- Z = TERMINAL (-T)
 - Y = Y-CAP LOAD, NF
 - X = Y CAP CENTER, NF
- DSC2000 =FILTER SERIES

NOTE: USE ANY COMBINATION OF -X WITH ANY -Y CAP VALUES
E.G. **DSC2000-.47-.47-QD** (0.47AMPS WITH 0.47 NF YCAP)

SPECIFICATIONS

| | |
|------------------------|--|
| OPERATING FREQUENCY | 50/60Hz |
| USABLE FREQUENCY | DC - 400 Hz |
| MAX. OPERATING VOLTAGE | 250V +10% |
| AMBIENT TEMPERATURE | -25 TO 40°C |
| CLIMATIC CATEGORY | 25/100/21 |
| TERMINALS (-T) | QD: 0.25 TABS W: WIRE LEADS S: STUDS |
| TYP. WEIGHT, LBS (KG) | 0.8 (0.36) |

LEAKAGE CURRENT

| | |
|-----------------|------------------|
| @ 250 VAC 50 Hz | 0 - 3.20 mA Max. |
| @ 120 VAC 60 Hz | 0 - 1.80 mA Max. |

HIPOT RATINGS

| | |
|----------------|----------|
| LINE TO GROUND | 2700 VDC |
|----------------|----------|

TYPICAL APPLICATIONS

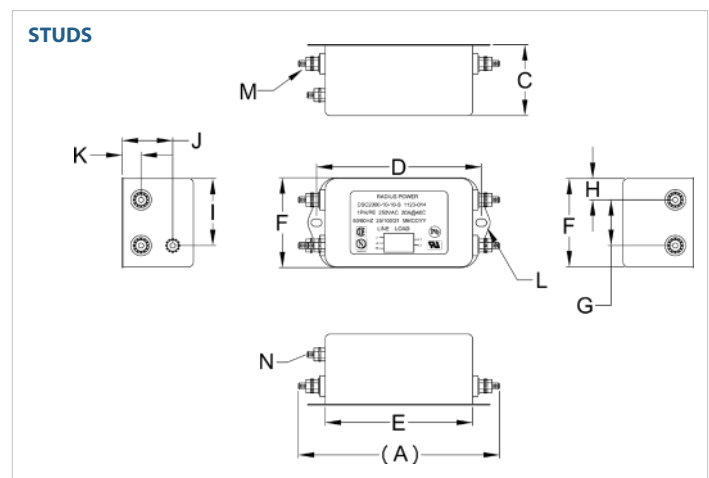
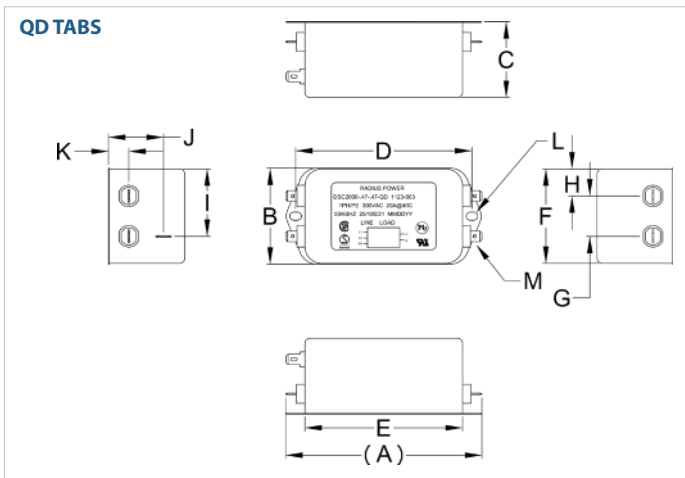
- ✓ Food Service Equipment
- ✓ Industrial and Mechanical Lighting
- ✓ Home Appliances
- ✓ Power Supplies
- ✓ Consumer Electronics

DSC2000

HIGH PERFORMANCE SINGLE PHASE DUAL STAGE POWER LINE FILTER

| MODEL NO. | RATED CURRENT (A) @ 40° C | Y-CAP, nF | Z-CAP | LEAKAGE CURRENT, mA @ 250V AC, 50 Hz / @ 120V AC, 60 Hz | | TERMINAL OPTIONS | | MAX. DIMENSIONS" (MM) | | |
|--------------------|---------------------------|-----------|-------|---|------|-------------------|-------------------|-----------------------|------------|-----------|
| | | | | | | (QD)INPUT/ OUTPUT | (S) INPUT/ OUTPUT | WIDTH | (LENGTH) | HEIGHT |
| DSC2000-0-0-QD | 20 | 0 | 0 | - | - | ✓ | | 2.24"(57) | 4.73"(120) | 1.81"(46) |
| DSC2000-0-0-S | 20 | 0 | 0 | - | - | | ✓ | 2.24"(57) | 5.00"(127) | 1.81"(46) |
| DSC2000-47-47-QD | 20 | 0.47 | 0.47 | 0.15 | 0.09 | ✓ | | 2.24"(57) | 4.73"(120) | 1.81"(46) |
| DSC2000-47-47-S | 20 | 0.47 | 0.47 | 0.15 | 0.09 | | ✓ | 2.24"(57) | 5.00"(127) | 1.81"(46) |
| DSC2000-1-1-QD | 20 | 1 | 1 | 0.31 | 0.18 | ✓ | | 2.24"(57) | 4.73"(120) | 1.81"(46) |
| DSC2000-1-1-S | 20 | 1 | 1 | 0.31 | 0.18 | | ✓ | 2.24"(57) | 5.00"(127) | 1.81"(46) |
| DSC2000-2.2-2.2-QD | 20 | 2.2 | 2.2 | 0.69 | 0.40 | ✓ | | 2.24"(57) | 4.73"(120) | 1.81"(46) |
| DSC2000-2.2-2.2-S | 20 | 2.2 | 2.2 | 0.69 | 0.40 | | ✓ | 2.24"(57) | 5.00"(127) | 1.81"(46) |
| DSC2000-4.7-4.7-QD | 20 | 4.7 | 4.7 | 1.48 | 0.85 | ✓ | | 2.24"(57) | 4.73"(120) | 1.81"(46) |
| DSC2000-4.7-4.7-S | 20 | 4.7 | 4.7 | 1.48 | 0.85 | | ✓ | 2.24"(57) | 5.00"(127) | 1.81"(46) |
| DSC2000-10-10-QD | 20 | 10 | 10 | 3.14 | 1.81 | ✓ | | 2.24"(57) | 4.73"(120) | 1.81"(46) |
| DSC2000-10-10-S | 20 | 10 | 10 | 3.14 | 1.81 | | ✓ | 2.24"(57) | 5.00"(127) | 1.81"(46) |

DSC2000 MECHANICAL OUTLINES" (MM)



| SERIES | (A) | B | C | D | E | F | G | H | I | J | K | L | M | N |
|----------------|----------------|---------------|---------------|----------------|---------------|---------------|---------------|---------------|---------------|---------------|---------------|-------------------------------------|---------------------------------|---------------|
| QD TABS | 4.56" (116) | 2.24" (57) | 1.81" (46) | 4.09" (104) | 3.66" (93) | 2.24" (57) | 0.94" (24) | 0.63" (16) | 1.57" (40) | 1.28" (33) | 0.47" (12) | Ø 0.25"x0.20", 2x Ø, 6.4x5.3, 2x | 0.25", 5x QD, MALE, 6.35, 5x | N/A |
| STUDS | 5.00" (127) | 2.24" (57) | 1.81" (46) | 4.09" (104) | 3.66" (93) | 2.24" (57) | 1.14" (29) | 0.53" (14) | 1.67" (43) | 1.26" (32) | 0.47" (12) | Ø 0.26"x0.18", 2x Ø, 6.8x4.8, 2x | STUD, M4, 4x | STUD, GND, M4 |

TYPICAL TOLERANCE: +/- 0.02" (0.50MM)

DSC2000

HIGH PERFORMANCE SINGLE PHASE DUAL STAGE POWER LINE FILTER

TYPICAL INSERTION LOSS, dB (50/50 Ohm)

| Amps | Freq (MHz) | 0.15 | 0.5 | 1.0 | 10 | 30 |
|------|------------|------|-----|-----|----|----|
| 20 | CM (dB) | 42 | 65 | 70 | 55 | 50 |
| | DM (dB) | 36 | 60 | 65 | 70 | 70 |