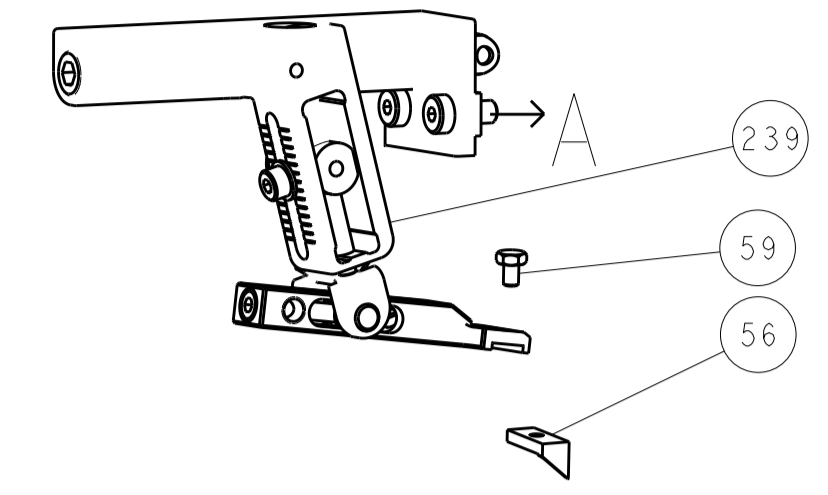


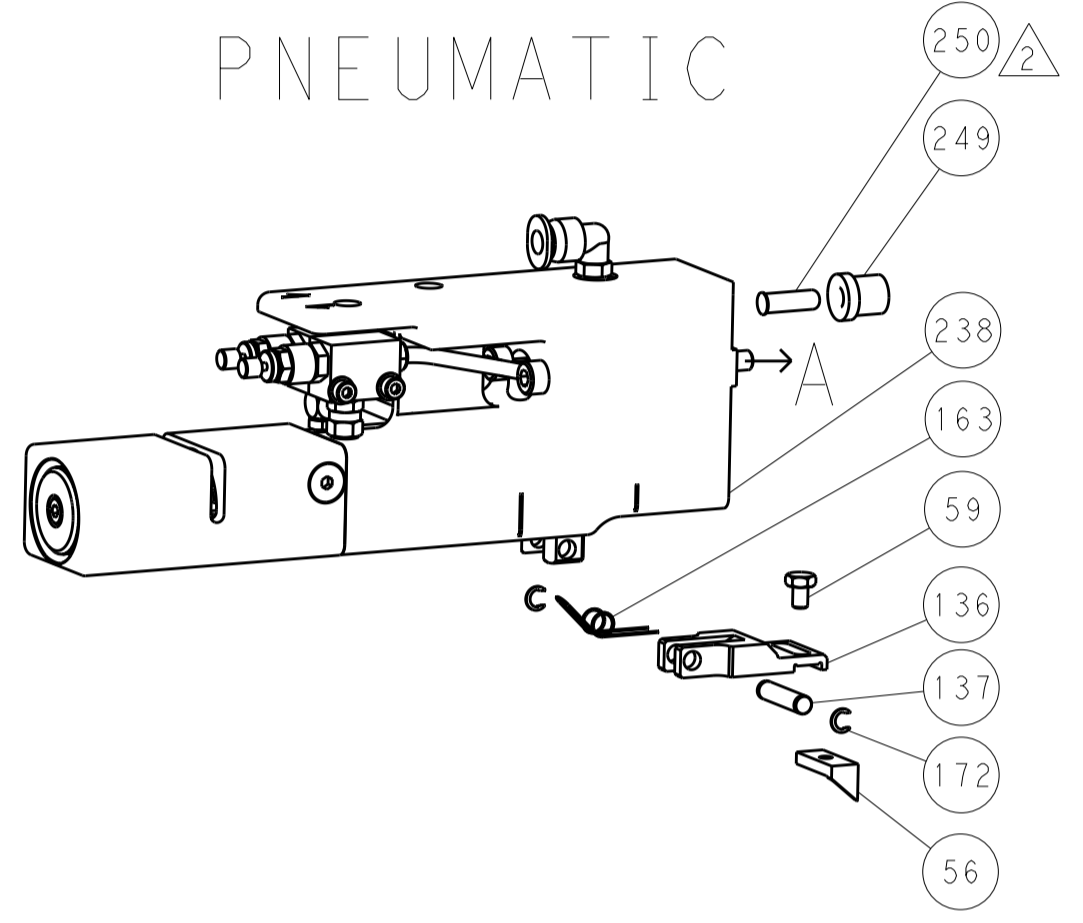


LOC		DIST		REVISIONS				
A	66	P	LTN	DESCRIPTION	DATE	DMN	APVD	
		-		SEE SHEET 1				

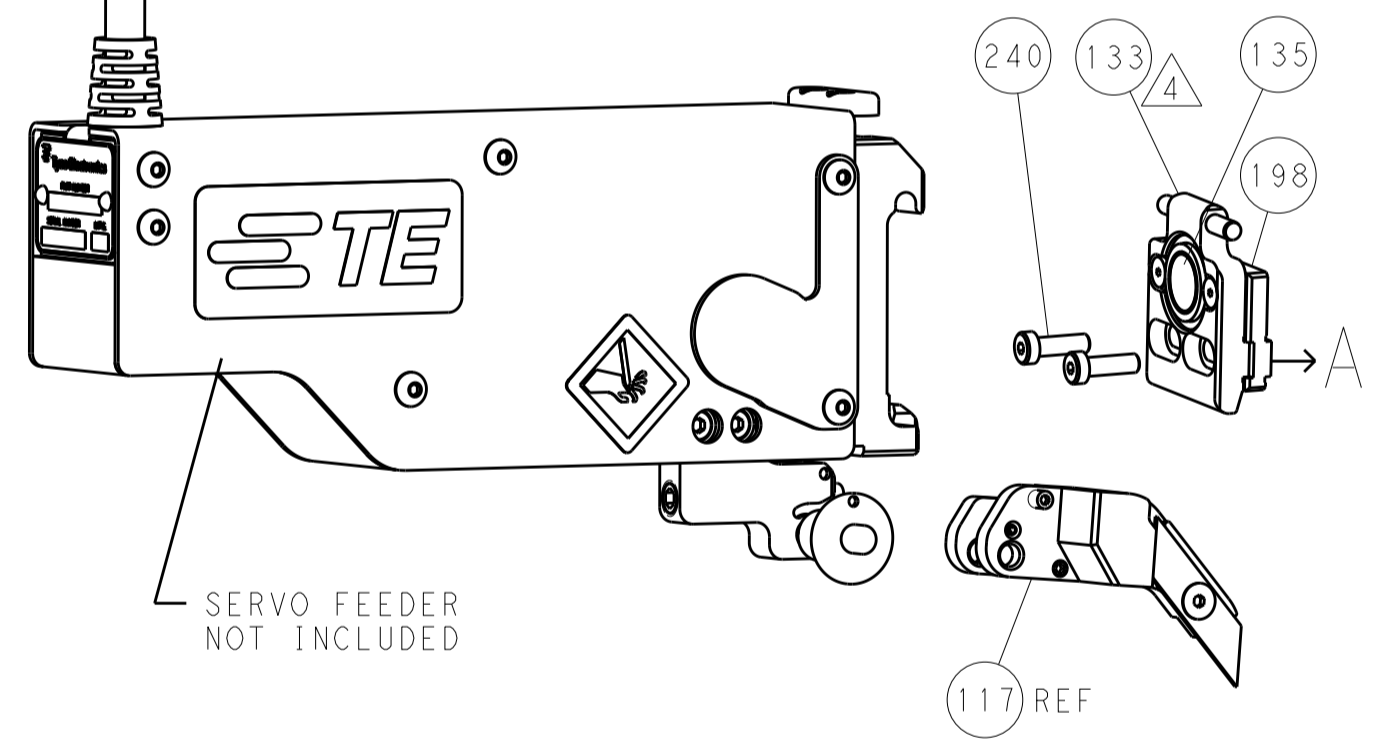
### FEED TYPE MECHANICAL



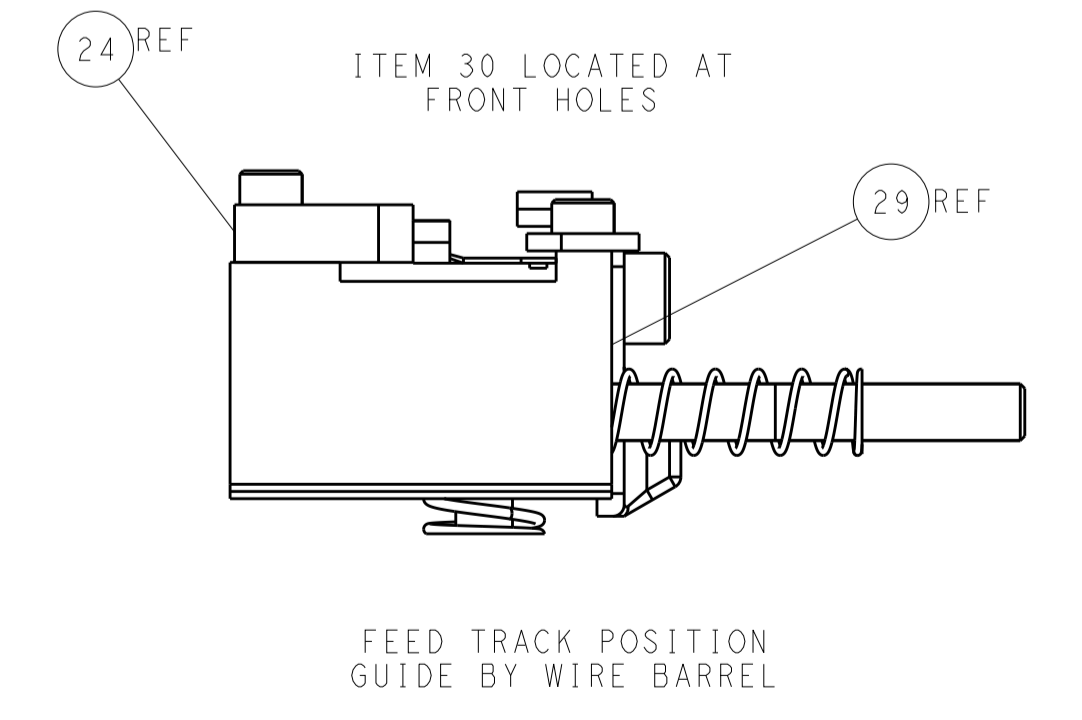
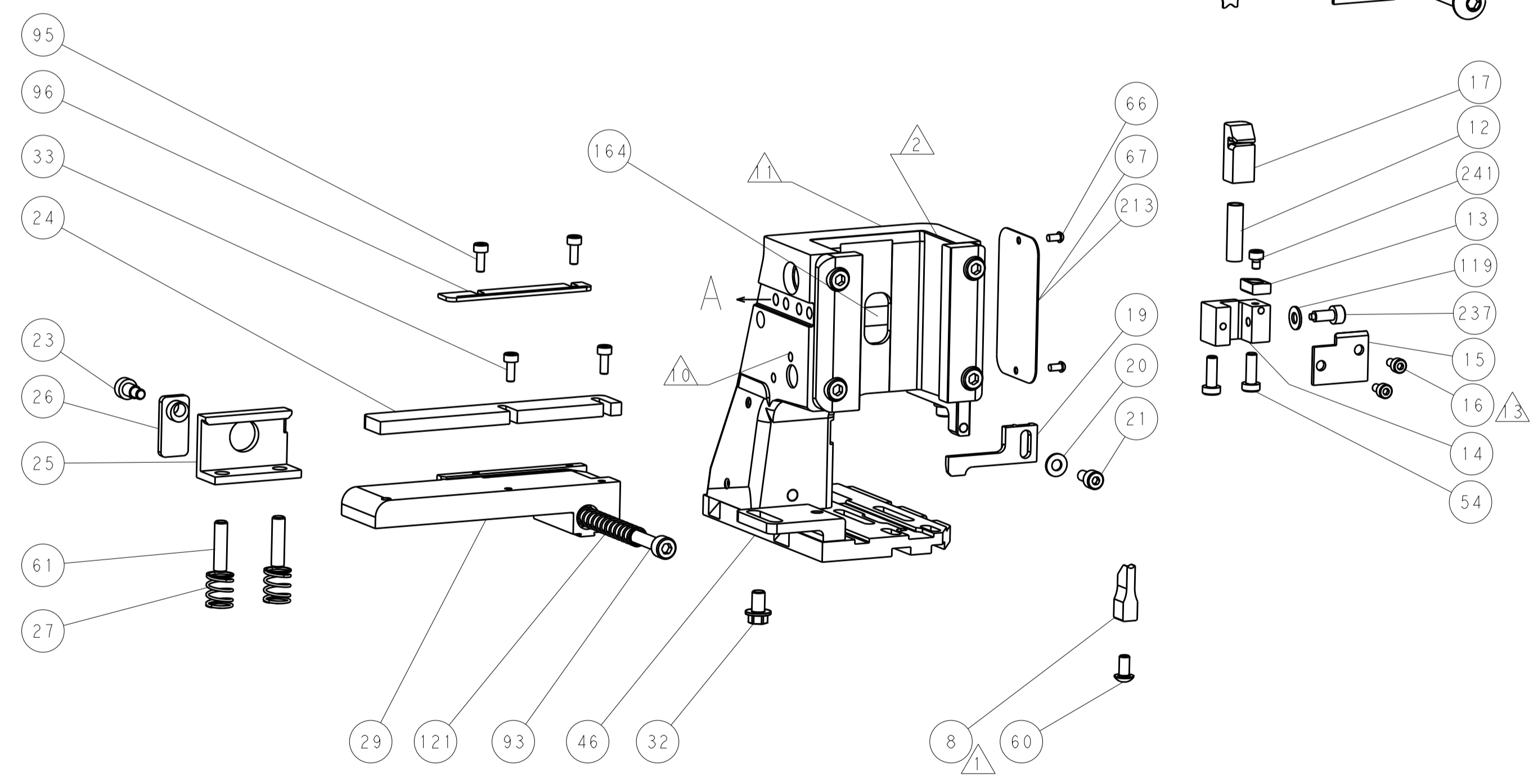
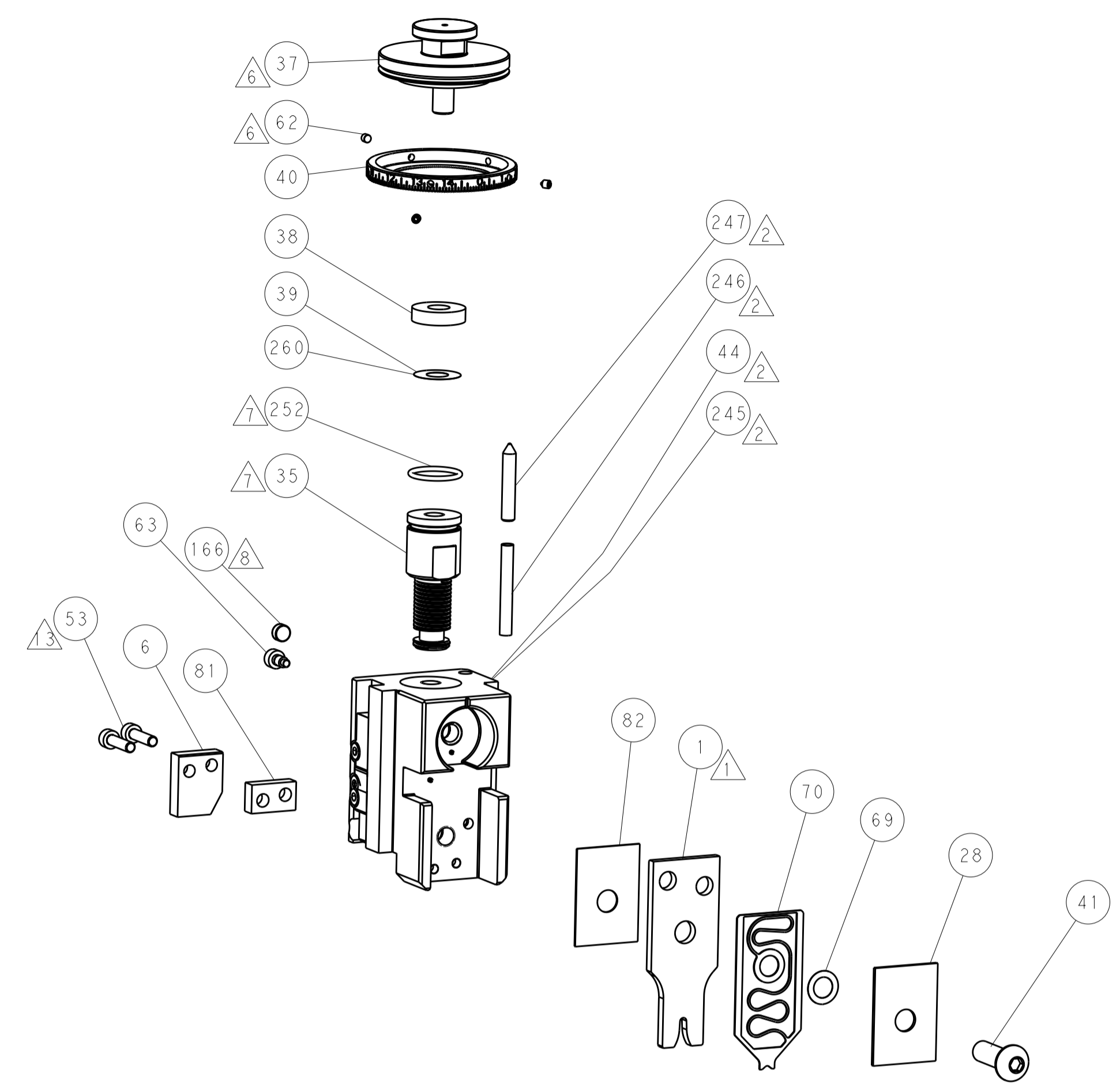
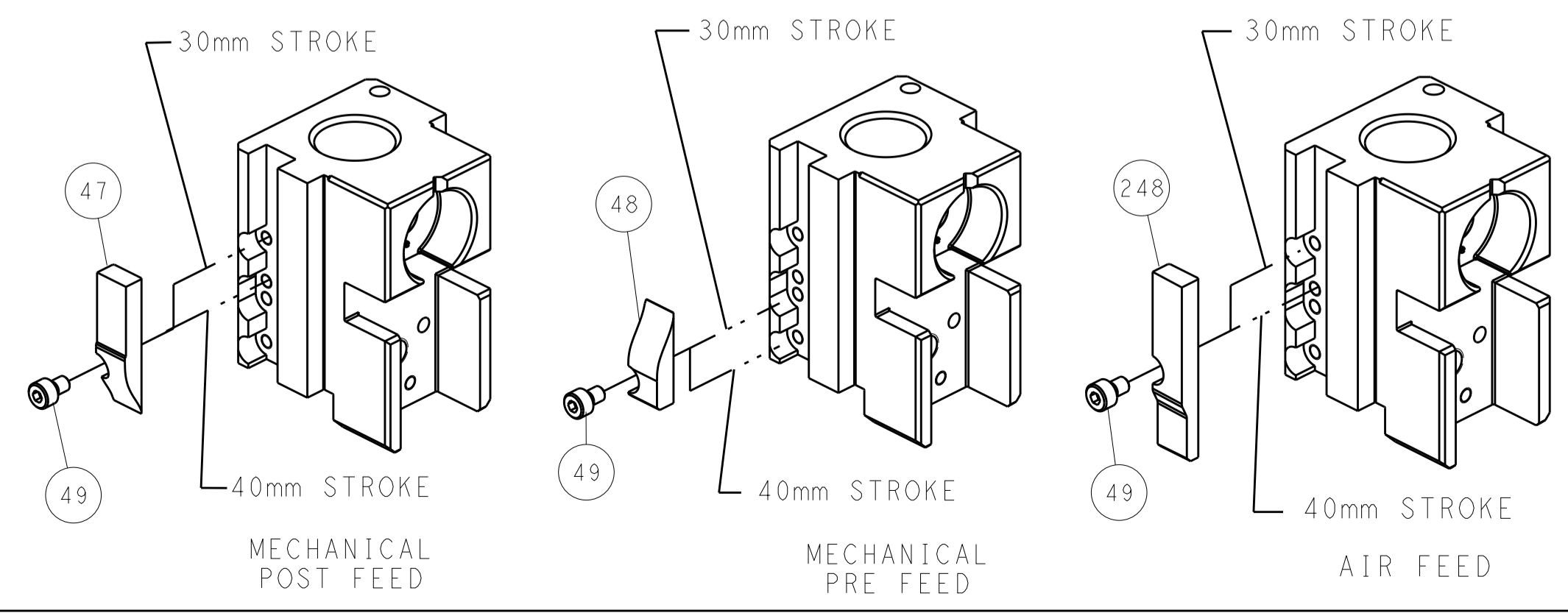
### PNEUMATIC



### SERVO LATCH PLATE



### CAM POSITIONS



**ATLANTIC VERSION**  
 Shown on sheets 1 of 4 & 2 of 4  
 (Pacific version shown on sheets 3 of 4 & 4 of 4)

DIMENSIONS:		TOLERANCES UNLESS OTHERWISE SPECIFIED:		DWG: Y. YIN 18DEC2012		TE Connectivity	
mm	0 PLC ±0.1	1 PLC ±0.1	2 PLC ±0.02	3 PLC ±0.005	4 PLC ±0.0005	ANGLES ±	TE Connectivity Harrisburg, PA 17105-3608
MATERIAL:				FINISH:		NAME: Ocean Side Feed Applicator	
Customer Accessible Production Drawing				SCALE: 1:1		SHEET 2 OF 4 REV A	

COPYRIGHT 20 BY TYCO ELECTRONICS CORPORATION. ALL RIGHTS RESERVED. PACIFIC VERSION TERMINATOR INTERFACE ADAPTER. PART NUMBER, REVISION, DESCRIPTION, FEED TYPE. CONVERT TO, PART NUMBERS REQUIRED. PNEUMATIC FEED, SERVO LATCH PLATE, SMART APPLICATOR, MECHANICAL FEED, SERVO LATCH PLATE, SMART APPLICATOR.

APPLICATOR DATA. CRIMP SIZE, TYPE, WIRE 2.79 mm [ .110 ], INSUL. APPLICATOR INSTRUCTIONS 408-10389.

TERMINAL DATA: INDAK TERMINAL TE CRIMP SPECIFICATION. TERMINAL NAME: TERMINAL. WIRE STRIP LENGTH, INSULATION DIAMETER RANGE. TERMINAL APPLICATION SPECIFICATION. TERMINALS APPLIED.

WIRE SIZE, CRIMP HEIGHT mm [INCH], CRIMP HEIGHT REFERENCE SETTING. 16 AWG, 18 AWG, 20 AWG.

- RECOMMENDED SPARE PARTS
GREASE BEARING SURFACES LIGHTLY
LUBRICATE DAILY PER THE APPLICATOR INSTRUCTION SHEET SUPPLIED WITH THE APPLICATOR.
APPLICATOR SPECIFIC DATA TO BE ENTERED INTO BLANK MEMORY CHIP AT ASSEMBLY...

\*WARNING
ON INSTALLATION, SET WIRE DISC, ITEM 40 TO LARGEST WIRE SIZE SETTING. USE OF SETTINGS BELOW MINIMUM REQUIRED CRIMP HEIGHT SETTING WILL CAUSE DAMAGE TO CRIMP TOOLING.

Table with columns: PART NO, DESCRIPTION, ITEM NO. Rows include: 2119782-1 FINE ADJUST HEAD ASM, PACIFIC STYLE, 2119640-1 PUSH ROD, AIR FEED, 2079988-1 BUSHING, LCH5-12, MISUMI...

PACIFIC VERSION
Shown on sheets 3 of 4 & 4 of 4
(Atlantic version shown on sheets 1 of 4 & 2 of 4)

REVISIONS table with columns: REVISION, DESCRIPTION, DATE, DWN, APVD. Entry: SEE SHEET 1.

Main parts list table with columns: QTY, PART NO, DESCRIPTION, ITEM NO. Includes items like STOP, SHEAR, TAG, IDENTIFICATION, SPACER, FEEDER, RING, RETAIN, EXTERN, 3/16 CRESCENT...

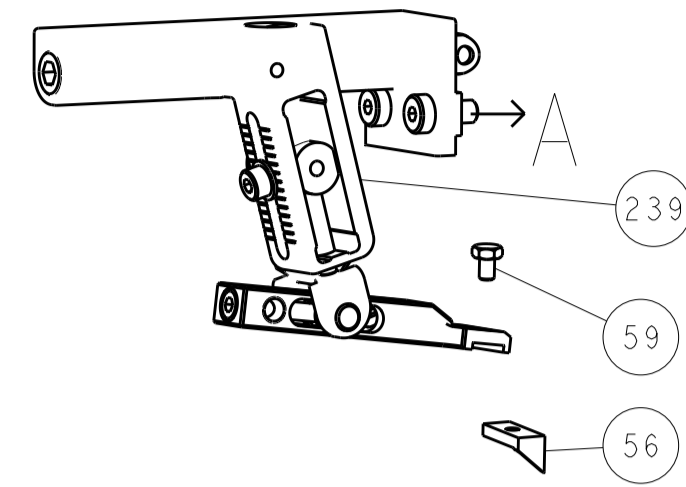
STE logo and company information: TE Connectivity, Harrisburg, PA 17105-3608. Ocean Side Feed Applicator. Part number 00779. Customer Accessible Production Drawing. Scale 1:1. Sheet 3 of 4.

AMP 4805 REV 31MAR2000

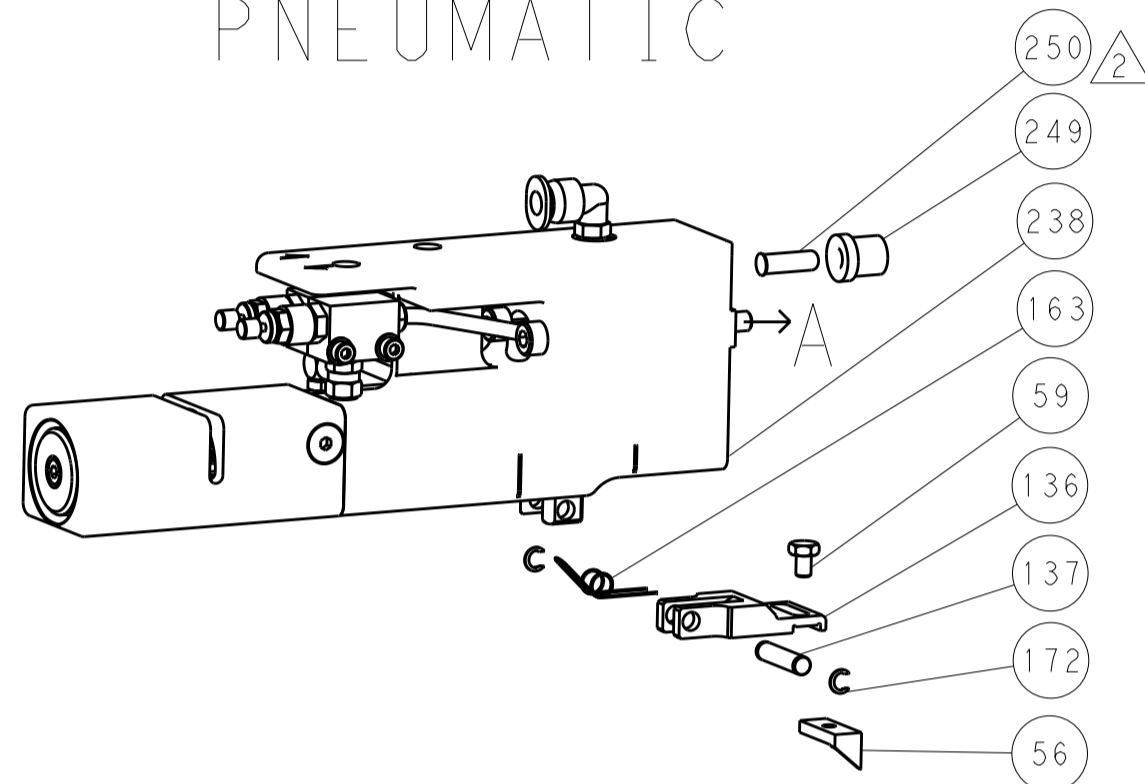
LOC		DIST		REVISIONS			
A	66	P	LTM	DESCRIPTION	DATE	OWN	APVD
		-	-	SEE SHEET 1	-	-	-

DIMENSIONING AND TOLERANCING PER ASME Y14.5M-2003

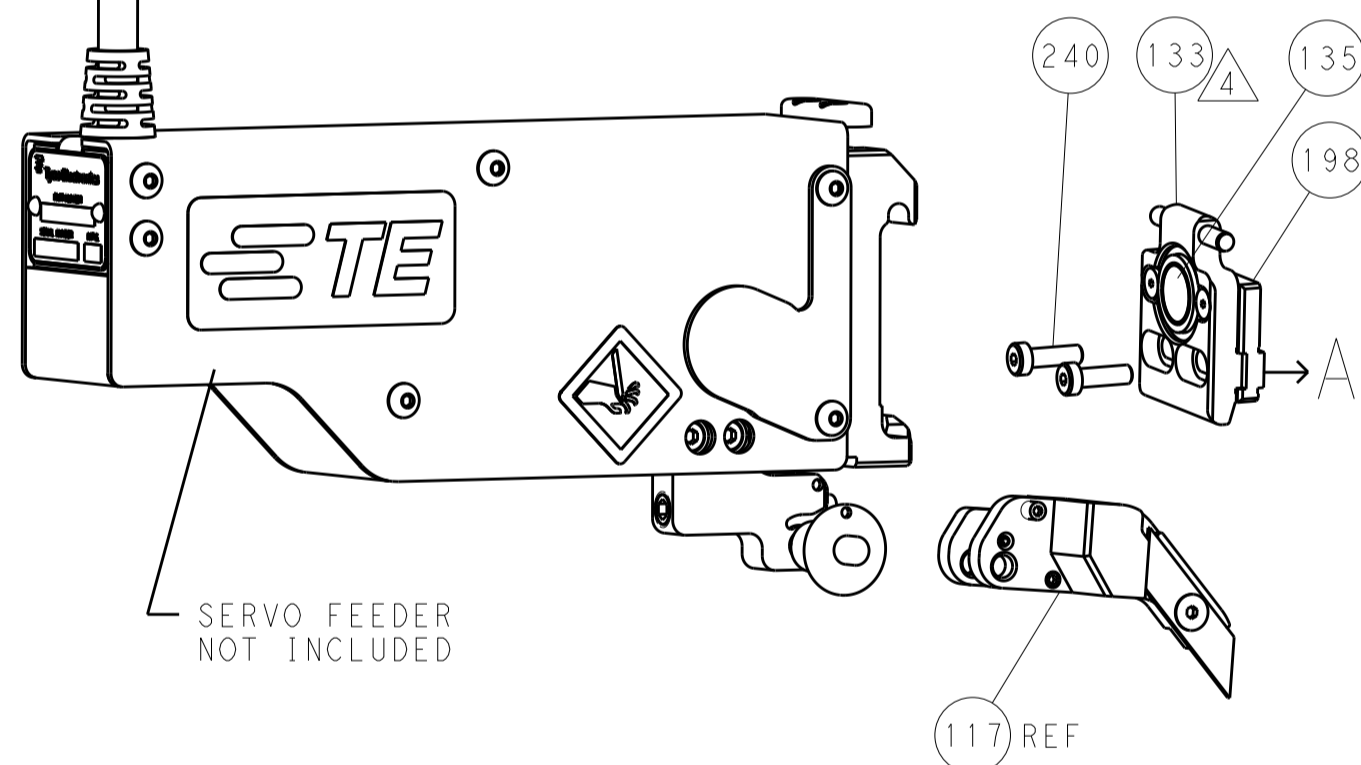
# FEED TYPE MECHANICAL



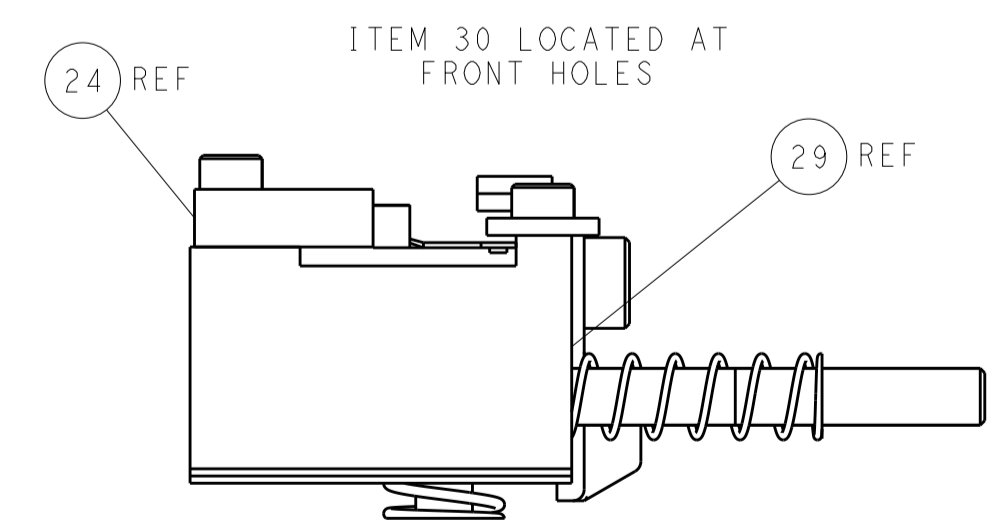
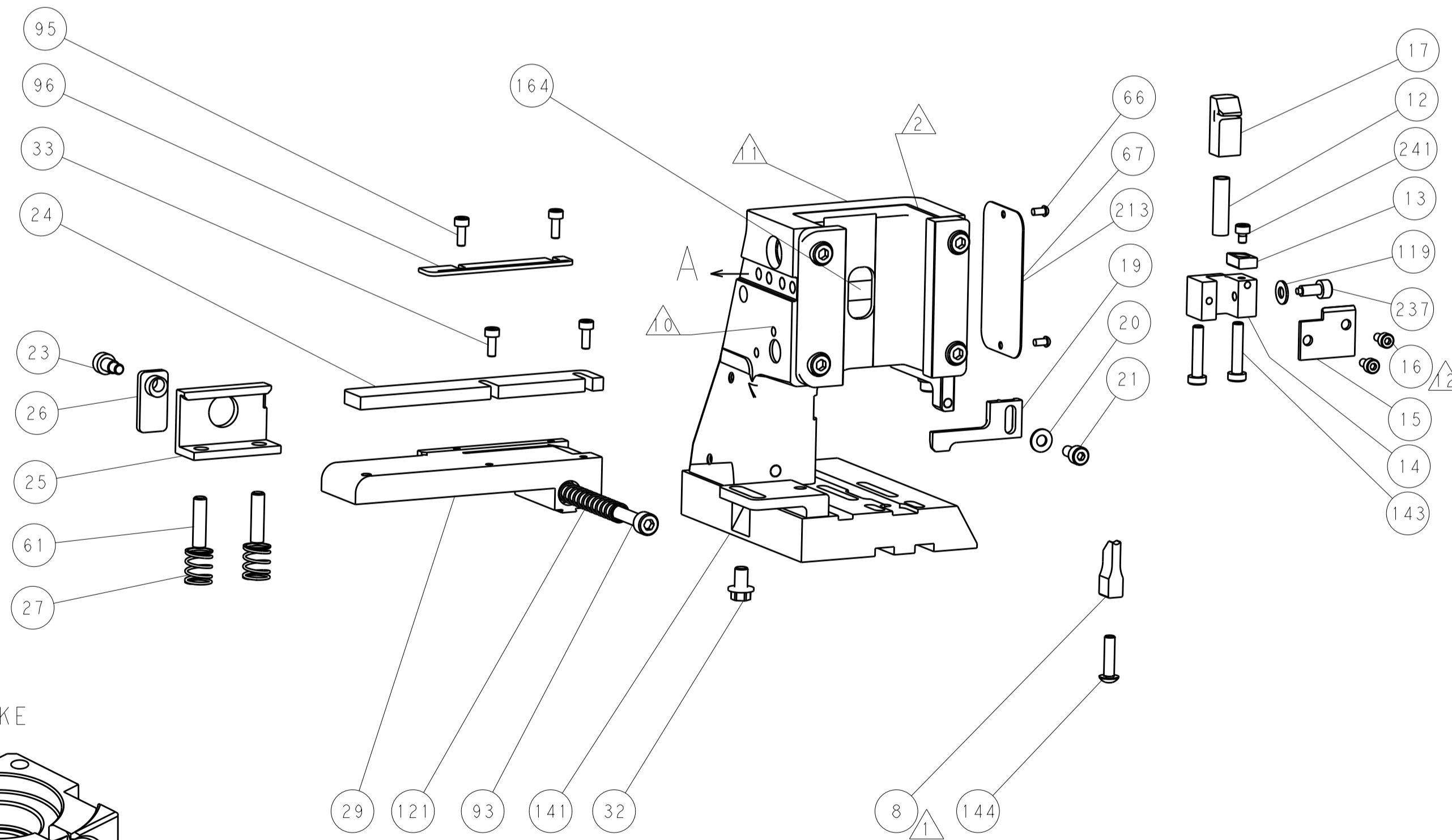
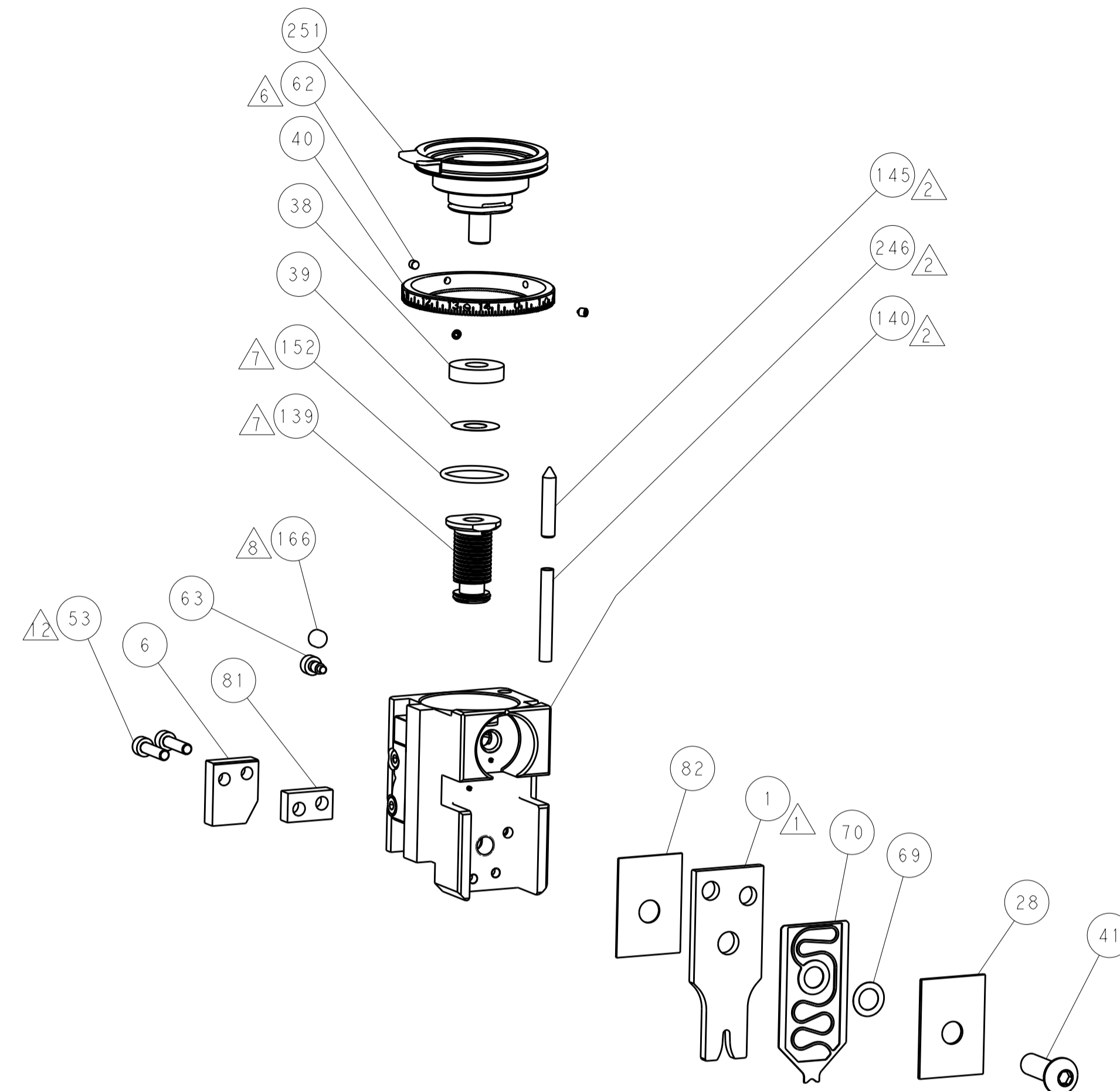
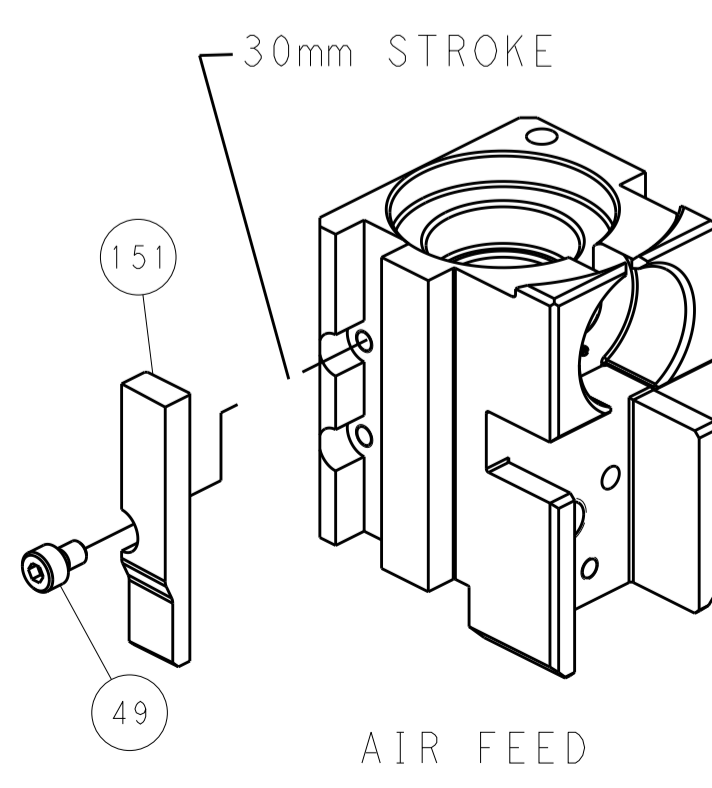
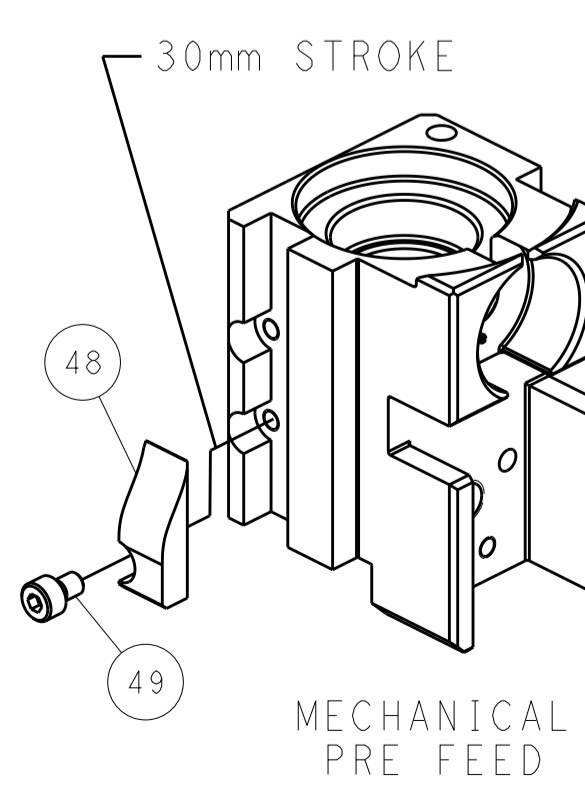
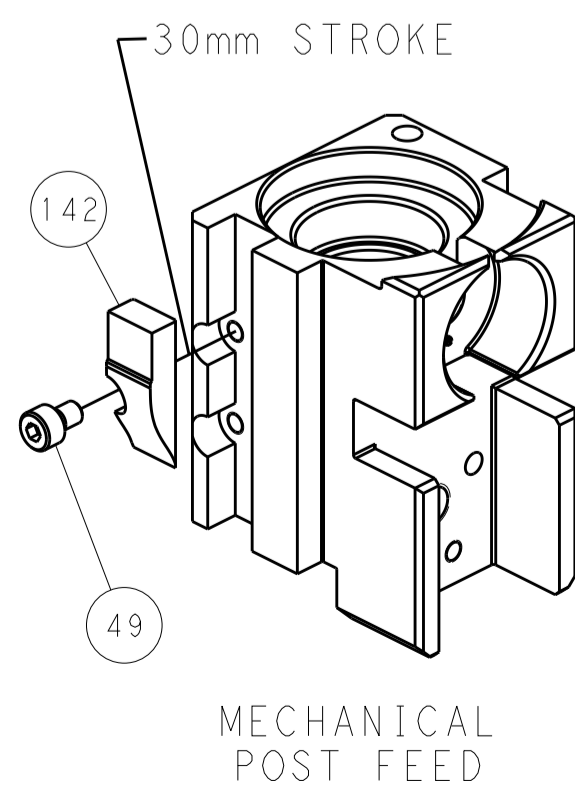
# PNEUMATIC



# SERVO LATCH PLATE



# CAM POSITIONS



**PACIFIC VERSION**  
 Shown on sheets 3 of 4 & 4 of 4  
 (Atlantic version shown on sheets 1 of 4 & 2 of 4)

DIMENSIONS:		TOLERANCES UNLESS OTHERWISE SPECIFIED:		OWN: Y. YIN 18DEC2012	TE Connectivity Harrisburg, PA 17105-3608
mm	0 PLC ±0.1	1 PLC ±0.1	2 PLC ±0.02	CHK: G. BAILEY 18DEC2012	
	3 PLC ±0.005	4 PLC ±0.0005	ANGLES ±	APVD: S. XI 18DEC2012	NAME: Ocean Side Feed Applicator
MATERIAL:	FINISH:	WEIGHT:	SCALE: 1:1	SIZE: A1	CAGE CODE: 00779
Customer Accessible Production Drawing				DRAWING NO: C=2151842	RESTRICTED TO: -