

DO NOT SCALE FROM THIS PRINT

NOTES:

1. Ⓢ REPRESENTS A CRITICAL DIMENSION.
2. ALL DIMENSIONS TO BE ABOUT CL WITHIN ±.005[0.13].
3. MINIMUM PUSHOUT FORCE: 3 lbs.
4. MAXIMUM CUT FLASH: .020[0.50].
5. MEASURE FROM THE TIPS OF THE TERMINALS.
6. MEASURE AT BOTH ENDS OF PART.
7. PARTS TO BE PACKAGED IN TUBES FOR 4-50 POSITIONS (.100 PITCH) OR 2-25 POSITIONS (.200 PITCH), OTHERWISE BULK PACKAGED.

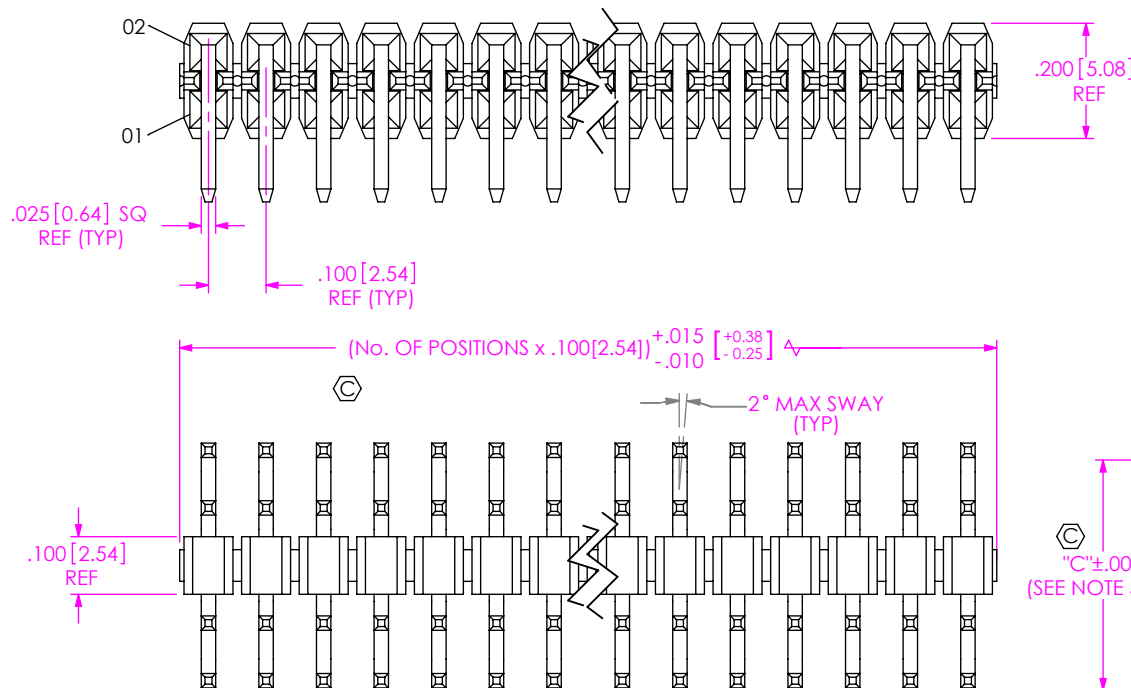
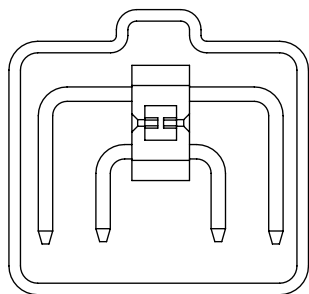


FIG 1
BSW-1XX-XX-X-D SHOWN

TUBE VIEW



PT-1-24-01-70 (USE TP-29)
(SEE NOTE 7)

TERMINAL SPACE

- 1: .100[2.54] (FILL EVERY POSITION)
- 2: .200[5.08] (FILL EVERY OTHER POS STARTING AT -01 AND ENDING IN LAST POS)

NO OF POSITIONS

- 1: -01 THRU -50 (PER ROW)
- 2: -02 THRU -25 (PER ROW) (SEE FIG. 3, SHEET 2)

TERMINAL SPECIFICATION

- 01: .050[1.27] PROFILE
- *-02: .060[1.52] PROFILE (SEE TABLE 1)

* = NOT RELEASED

BTSW-XXX-XX-X-D-XX-XXX

POLARIZATION
XXX INDICATES POSITION TO BE OMITTED; LEAVE BLANK FOR NO OPTION

OPTIONS

- LL: LOCKING LEAD (SEE FIG. 2, SHEET 2)

ROW SPECIFICATION

- D: DOUBLE

PLATING SPECIFICATION

- T: MATTE TIN CONTACT AND TAIL
- F: FLASH GOLD, 3 Au / 50 Ni MIN ON ENTIRE PIN (USE T-1S6-XX-GF-2)

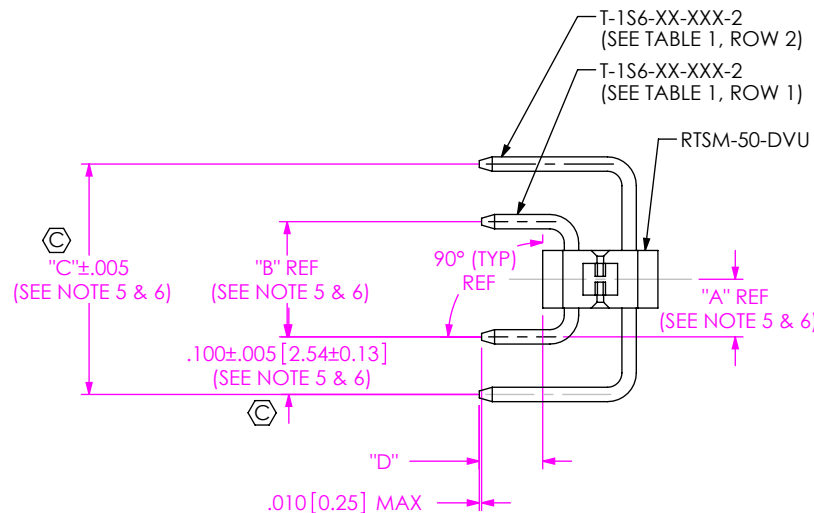


TABLE 1

XX	ROW 1	ROW 2	"A"	"B"	"C"	"D"
-01	T-1S6-17-XXX-2	T-1S6-28-XXX-2	.100[2.54]	.200[5.08]	.400[10.16]	.11[2.8]
*-02	T-1S6-08-XXX-2	T-1S6-11-XXX-2	.110[2.79]	.220[5.59]	.420[10.67]	.12[3.1]

* = NOT RELEASED

UNLESS OTHERWISE SPECIFIED, DIMENSIONS ARE IN INCHES.
TOLERANCES ARE:
DECIMALS ANGLES
.XX: ±.01[.3] 2°
.XXX: ±.005[.13]
.XXXX: ±.0020[.051]

PROPRIETARY NOTE

THIS DOCUMENT CONTAINS INFORMATION CONFIDENTIAL AND PROPRIETARY TO SAMTEC, INC. AND SHALL NOT BE REPRODUCED OR TRANSFERRED TO OTHER DOCUMENTS OR DISCLOSED TO OTHERS OR USED FOR ANY PURPOSE OTHER THAN THAT WHICH IT WAS OBTAINED WITHOUT THE EXPRESSED WRITTEN CONSENT OF SAMTEC, INC.



520 PARK EAST BLVD, NEW ALBANY, IN 47150
PHONE: 812-944-6733 FAX: 812-948-5047
e-Mail info@SAMTEC.com code 53322

DO NOT SCALE DRAWING

SHEET SCALE: 3:1

DESCRIPTION:
.025 [.64] SQ. DOUBLE ROW, DOUBLE -RA POST ASM

DWG. NO.
BTSW-XXX-XX-X-D-XX-XXX

BY: J. BROWNING 04/27/2010 SHEET 1 OF 2

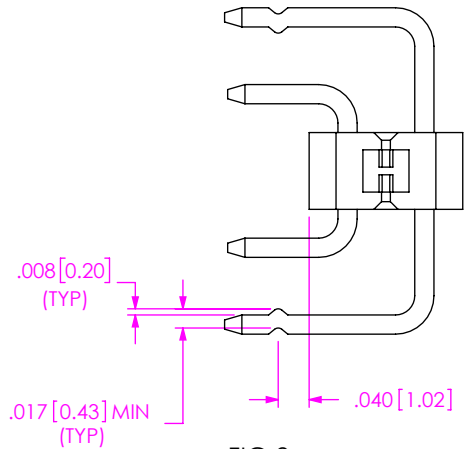
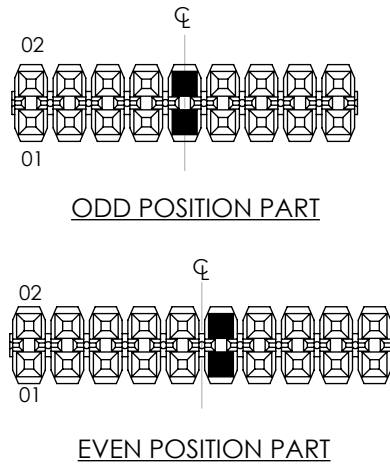


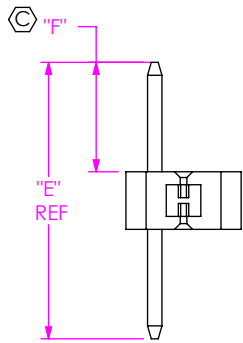
FIG 2
BSW-1XX-XX-X-D-LL SHOWN
(SAME AS FIG. 1 EXCEPT AS SHOWN)



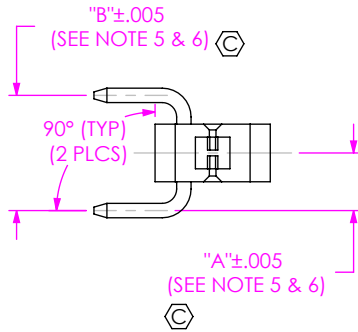
LOCKING LEAD OPTION

■ = CRIMP LOCATION

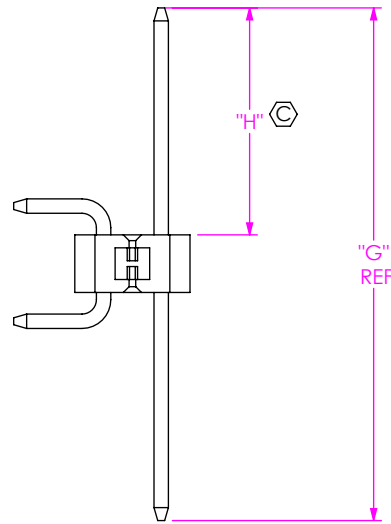
IF CRIMP POSITION IS POLARIZED, MOVE ONE POSITION TOWARD PIN 1



IN-PROCESS 1
FILL ROW 1



IN-PROCESS 2
FORM ROW 1



IN-PROCESS 3
FILL ROW 3

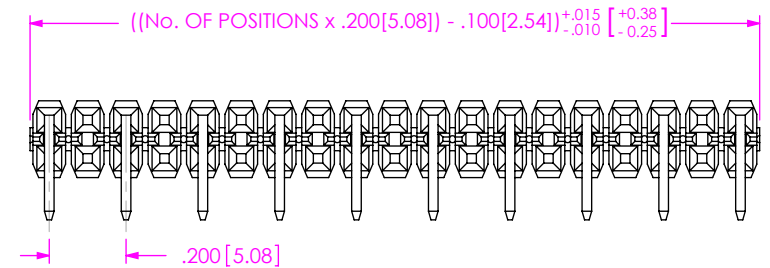


FIG 3
BSW-210-XX-X-D SHOWN
(SAME AS FIG. 1 EXCEPT AS SHOWN)

TABLE 2

XX	ROW 1	ROW 2	"E"	"F"	"G"	"H"
-01	T-1S6-17-XXX-2	T-1S6-28-XXX-2	.480[12.19]	.190[4.83]	.890[22.61]	.395[10.03]
*-02	T-1S6-08-XXX-2	T-1S6-11-XXX-2	.530[13.46]	.215[5.46]	.930[23.62]	.415[10.54]

* = NOT RELEASED

PROPRIETARY NOTE

THIS DOCUMENT CONTAINS INFORMATION CONFIDENTIAL AND PROPRIETARY TO SAMTEC, INC. AND SHALL NOT BE REPRODUCED OR TRANSFERRED TO OTHER DOCUMENTS OR DISCLOSED TO OTHERS OR USED FOR ANY PURPOSE OTHER THAN THAT WHICH IT WAS OBTAINED WITHOUT THE EXPRESSED WRITTEN CONSENT OF SAMTEC, INC.

DO NOT SCALE DRAWING

SHEET SCALE: 3:1



520 PARK EAST BLVD, NEW ALBANY, IN 47150
PHONE: 812-944-6733 FAX: 812-948-5047
e-Mail: info@SAMTEC.com code 55322

DESCRIPTION:
.025 [.64] SQ. DOUBLE ROW, DOUBLE -RA POST ASM

DWG. NO. **BSW-XXX-XX-X-D-XX-XXX**

BY: J. BROWNING 04/27/2010 SHEET 2 OF 2