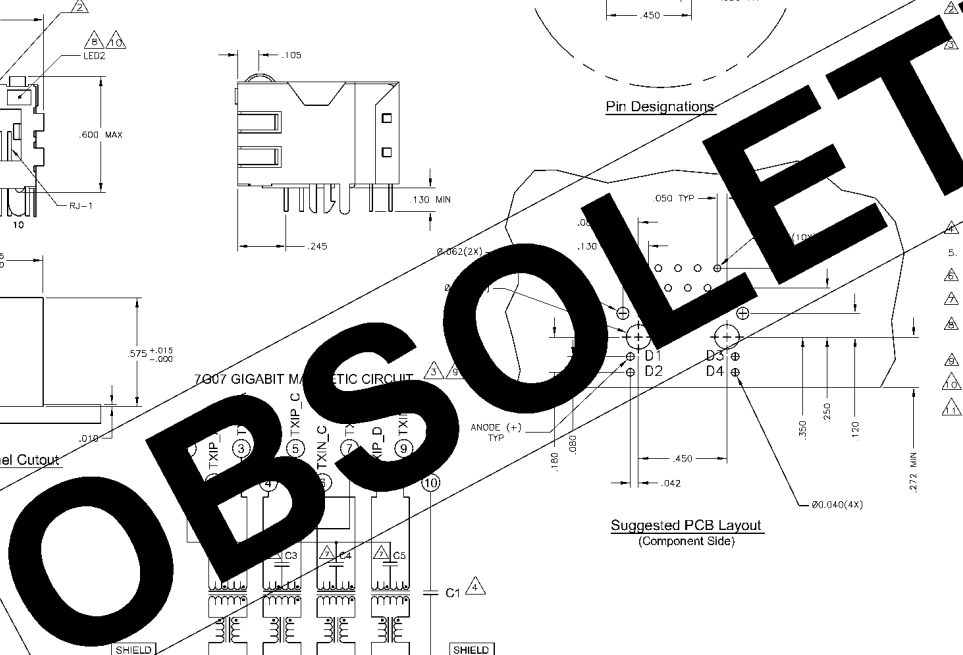


- MATERIALS:**
- HOUSING - THERMOPLASTIC PET POLYESTER FLAMMABILITY RATING UL 94V-0
  - SHIELD - .010" THICK C26800 BRASS PREPLATED WITH 30µINCH MIN SEMI-BRIGHT NICKEL, SOLDER TABS POST DIPPED WITH 100µINCH MIN SAC SOLDER
  - MOD JACK CONTACTS - .040" x 0.018" PHOSPHOR BRONZE, 50µINCH MIN OVERALL NICKEL UNDERPLATE WITH SELECT 50µINCH MIN HARD GOLD FINISH PLATE
  - SOLDER TAILS WITH 100µINCH MIN MATTE TIN AND/OR SAC SOLDER DIP
  - LIGHT EMITTING DIODES - DIFFUSED EPOXY LENS, .028" x .020" CARBON STEEL WIREFRAME LEADS, PLATED WITH 50µINCH SILVER OVER 50µINCH NICKEL UNDERPLATE WITH 100µINCH COPPER UNDERPLATE, POST-PLATED WITH 100µINCH MATTE TIN AND/OR SAC SOLDER DIP OR PURE TIN SOLDER DIP
  - CIRCUITRY CAPACITY CONFORMS TO FCC RULES AND REGULATIONS PART 68, SUBPART 68.101
- MANUFACTURING:**
- TURNS (CHIP CABLE) 11 ALL PAIR PAIRS
  - OPEN CIRCUIT INDUCTANCE (DC) 1.0 µH MIN @ 10MHz, 0.1VRMS, 3mA DC, 100µM 0°C
  - ALL FOODS
  - PERFORMANCE
  - INSERTION LOSS: 1.1dB MAX FROM 0.5MHz TO 100MHz
  - RETURN LOSS: 18dB MIN FROM 0.5MHz TO 4.0MHz
  - CROSSTALK ATTENUATION: 35dB MIN FROM 0.5MHz TO 100MHz
  - CROSSTALK ATTENUATION: 33-20\*LOG(F/50dB) MIN FROM 4.0MHz TO 100MHz
  - COMMON MODE REJECTION RATIO (CMRR): 30dB MIN FROM 0.5MHz TO 100MHz
  - ISOLATION VOLTAGE: COMPLES WITH IEEE802.3 2002, PARA 40.6.11, ITEM a or b.
- OPERATING TEMPERATURE: FROM 0° - +70°C.**
- R1-R4 = 75 OHMS, 1/8 W, 5% RESISTORS.
  - C2-C5 = 0.1µF, 50V CAPACITORS
  - LED COMPLIANT WITH IEC60825-1 SAFETY OF LASER PRODUCTS, WHEN OPERATED UP TO 20 mA. THE 250 OHM RESISTOR IS INCLUDED IN THE LEADS.
  - THE MAGNETICS ARE SYMMETRIC, AND SUPPORT AUTO-MDM/MDX.
  - LED PEAK WAVELENGTH (GREEN) = 565nm
  - TRADEMARK, PART NUMBER, DATE CODE, COUNTRY OF ORIGIN AND AGENCY APPROVAL MARKING IN APPROXIMATE LOCATION SHOWN



GREEN	GREEN	1-6605848-1
LED1	LED2	IPART NUMBER
THIS DRAWING IS A CONTROLLED DOCUMENT. IT IS THE PROPERTY OF GREEN LEADS. IT IS TO BE USED ONLY FOR THE PURPOSES INTENDED AND IS NOT TO BE REPRODUCED OR TRANSMITTED IN ANY FORM OR BY ANY MEANS, ELECTRONIC OR MECHANICAL, INCLUDING PHOTOCOPYING, RECORDING, OR BY ANY INFORMATION STORAGE AND RETRIEVAL SYSTEM. WITHOUT PERMISSION IN WRITING FROM GREEN LEADS, ALL RIGHTS ARE RESERVED.		
DATE	DESIGNED BY	DATE
108-2100	7607 GIGABIT MAGNETIC CIRCUIT (10 PIN), SHIELDED, DISCOUPLING CAPACITOR, WITH RESISTOR LEADS	
SIZE	USE CASE (leave blank)	REVISE TO
A1	00779	6605848
CUSTOMER DRAWING		

**OBSOLETE**