



### Main

Range of Product	Altivar
Product or Component Type	EMC input filter
Range Compatibility	Altivar 312 Lexium 05 Altivar 312 Solar Altivar 31C Altivar Machine ATV320
Product compatibility	ATV312HU22M2 ATV31CU22M2 LXM05AD28F1 LXM05AD28M2 LXM05BD28F1 LXM05BD28M2 LXM05CD28M2 Variable speed drive ATV320...C2.2 kW, 200...240 V single phase Variable speed drive ATV320...W/ ATV320...WS2.2 kW, 200...240 V single phase
Product Specific Application	Radio interference input filter
Line Rated Current	22 A
Thermal losses	7.5 W ATV31CU22M2
Phase	Single phase

### Complementary

Maximum earth leakage current	80 mA 50 Hz
Power supply voltage	200...240 V
Tolerance	10 %
Net Weight	2.49 lb(US) (1.13 kg)

### Environment

IP degree of protection	IP20 IP41 upper part)
Relative humidity	0...93 % IEC 68-2-3
Ambient air temperature for operation	14...122 °F (-10...50 °C)
Ambient Air Temperature for Storage	-13...158 °F (-25...70 °C)
Operating altitude	<= 3280.84 ft (1000 m) without current derating 3280.84...9842.52 ft (1000...3000 m) with current derating 1 % per 100 m
Vibration resistance	1 gn 13...150 Hz)IEC 60068-2-6 1.5 mm peak to peak 3...13 Hz)IEC 60068-2-6
Shock resistance	15 gn 11 ms EN/IEC 60068-2-27
Standards	EN 133200 EN/IEC 61800-3

### Ordering and shipping details

Category	22154 - ATV320/ATV312/ATV32 ACCESSORIES
Discount Schedule	CP4B
GTIN	3389110689471
Nbr. of units in pkg.	1
Package weight(Lbs)	34.11 oz (967 g)
Returnability	No
Country of origin	TH

## Packing Units

Unit Type of Package 1	PCE
Package 1 Height	2.24 in (5.7 cm)
Package 1 width	9.33 in (23.7 cm)
Package 1 Length	11.10 in (28.2 cm)
Unit Type of Package 2	S04
Number of Units in Package 2	11
Package 2 Weight	26.05 lb(US) (11.818 kg)
Package 2 Height	11.81 in (30 cm)
Package 2 width	15.75 in (40 cm)
Package 2 Length	23.62 in (60 cm)
Unit Type of Package 3	P06
Number of Units in Package 3	44
Package 3 Weight	123.58 lb(US) (56.056 kg)
Package 3 Height	30.31 in (77 cm)
Package 3 width	31.50 in (80 cm)
Package 3 Length	23.62 in (60 cm)

## Offer Sustainability

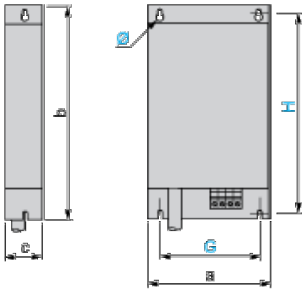
California proposition 65	WARNING: This product can expose you to chemicals including: Lead and lead compounds, which is known to the State of California to cause cancer and birth defects or other reproductive harm. For more information go to <a href="http://www.P65Warnings.ca.gov">www.P65Warnings.ca.gov</a>
REACH Regulation	<a href="#">REACH Declaration</a>
REACH free of SVHC	Yes
EU RoHS Directive	Pro-active compliance (Product out of EU RoHS legal scope) <a href="#">EU RoHS Declaration</a>
Toxic heavy metal free	Yes
Mercury free	Yes
RoHS exemption information	<a href="#">Yes</a>
China RoHS Regulation	<a href="#">China RoHS Declaration</a>

## Contractual warranty

Warranty	18 months
----------	-----------

Additional EMC Input Filters

Dimensions



Dimensions in mm

a	b	c	G	H	Ø
140	235	35	120	215	4.5

Dimensions in in.

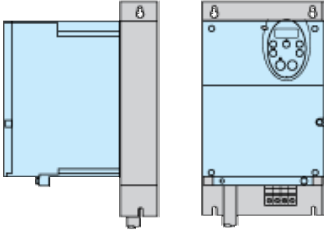
a	b	c	G	H	Ø
5.51	9.25	1.38	4.72	8.46	0.18

---

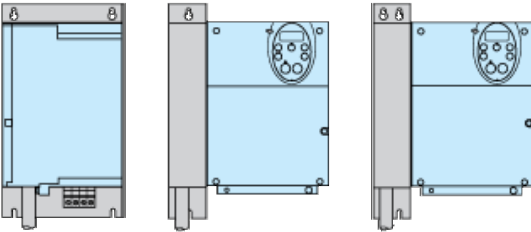
Additional EMC Input Filter

---

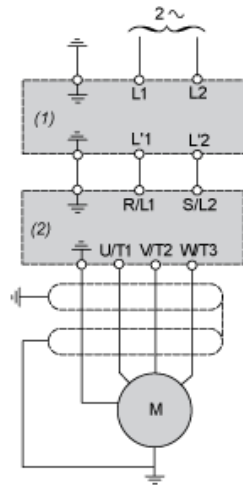
Mounting the Filter under the Drive



Mounting the Filter next to the Drive



Recommended Schema



- (1) Filter
- (2) Drive