



Datasheet 3/2019

EMI/RFI Filter with excellent attenuation for industrial, residential and medical applications

APPROVALS:



UL1283
CSA C22.2



SCCR by UL508A



FIN1740.(006 – 200).M

FEATURES

- Rated current from 6 to 200A
- Excellent differential and common mode attenuation
- Low leakage current
- DIN rail mounting

BENEFITS

- 5 Year warranty
- Suitable for medical applications
- Compact design

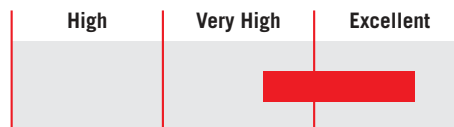
MARKETS

- Conveyors
- Packaging machinery
- Woodworking machinery
- Medical equipment

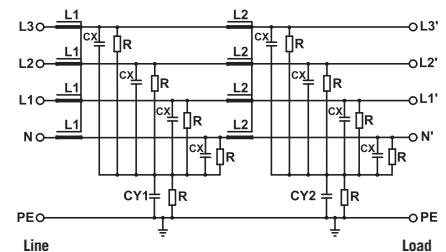
ORDERING CODE

FIN1740 .055 .M
Model Current (A) Connection
M = Terminal block

ATTENUATION INDICATOR



ELECTRIC DIAGRAM



TECHNICAL SPECIFICATIONS

| | |
|--|---|
| Nominal voltage | 0 / 600 Vac |
| Frequency | 50 – 60 Hz |
| Rated current | 6 to 200A |
| Potential test voltage phase to phase | 2400 Vdc (2 sec.) |
| Potential test voltage phase to ground | 3200 Vdc (2 sec.) |
| Leakage current normal conditions | < 3 mA * |
| Leakage current worst conditions | < 15 mA |
| IP Protection | IP20 |
| Overload capability | 4 x Rated current (Switch ON) 2 x In 10 seconds 1.5 In for 10 minutes |
| Climatic class | -40 / +85° C |
| MTBF at 40°C | 250.000 Hrs |

* Voltage 230 Vac phase to ground 50 Hz / 40°C

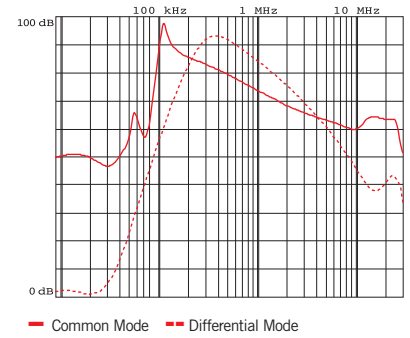
ELECTRICAL CHARACTERISTICS

| FIN1740 | Rated Current 40°C | Rated Current 50°C | Power Loss (W) |
|---------|--------------------|--------------------|----------------|
| .006.M | 8 | 6 | 8 |
| .012.M | 14 | 12 | 10 |
| .016.M | 18 | 16 | 12 |
| .025.M | 28 | 25 | 15 |
| .032.M | 35 | 32 | 23 |
| .042.M | 50 | 42 | 32 |
| .055.M | 63 | 55 | 37 |
| .070.M | 80 | 70 | 52 |
| .080.M | 90 | 80 | 60 |
| .100.M | 110 | 100 | 92 |
| .115.M | 130 | 115 | 101 |
| .150.M | 175 | 150 | 115 |
| .200.M | 230 | 200 | 120 |

CONNECTIONS

| LINE | | | PE | |
|--------------------------------|-----------------------------------|----------------------|--------|-------------|
| Solid Cable (mm ²) | Stranded Cable (mm ²) | Terminal Torque (Nm) | d (mm) | Torque (Nm) |
| 0.2 - 10 | 0.2 - 6 | 1.2 | M6 | 6 |
| 0.2 - 10 | 0.2 - 6 | 1.2 | M6 | 6 |
| 0.2 - 10 | 0.2 - 6 | 1.2 | M6 | 6 |
| 0.2 - 10 | 0.2 - 6 | 1.2 | M6 | 6 |
| 0.2 - 10 | 0.2 - 6 | 1.2 | M6 | 6 |
| 0.5 - 16 | 0.5 - 10 | 1.8 | M6 | 6 |
| 0.5 - 16 | 0.5 - 10 | 1.8 | M6 | 6 |
| 4 - 25 | 6 - 35 | 4.5 | M10 | 18 |
| 4 - 25 | 6 - 35 | 4.5 | M10 | 18 |
| 10 - 50 | 10 - 50 | 4 | M10 | 18 |
| 10 - 50 | 10 - 50 | 4 | M10 | 18 |
| 35 - 95 | 35 - 95 | 20 | M10 | 18 |
| 35 - 95 | 35 - 95 | 20 | M10 | 18 |

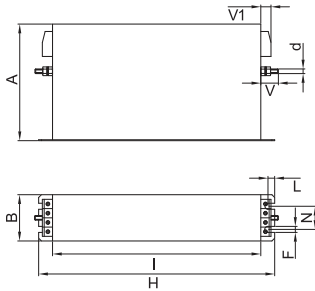
TYPICAL ATTENUATION



MECHANICAL DIMENSIONS mm

| FIN1740 | A | B | V | V1 | F | H | I | L | N | d | Weight Kg. | Case |
|---------|-----|-----|------|----|---|-----|-----|----|-----|-----|------------|------|
| .006.M | 140 | 60 | 19 | 16 | 6 | 226 | 200 | 7 | 38 | M6 | 1.9 | 1 |
| .012.M | 140 | 60 | 19 | 16 | 6 | 226 | 200 | 7 | 38 | M6 | 1.9 | 1 |
| .016.M | 177 | 70 | 19 | 16 | 6 | 267 | 237 | 8 | 44 | M6 | 1.9 | 1 |
| .025.M | 177 | 70 | 19 | 16 | 6 | 267 | 237 | 8 | 44 | M6 | 2.5 | 1 |
| .032.M | 177 | 70 | 19 | 16 | 6 | 267 | 237 | 8 | 44 | M6 | 2.5 | 1 |
| .042.M | 177 | 80 | 19 | 34 | 6 | 295 | 265 | 8 | 54 | M6 | 3.7 | 1 |
| .055.M | 177 | 80 | 19 | 33 | 6 | 295 | 265 | 8 | 54 | M6 | 3.9 | 1 |
| .070.M | 205 | 100 | 28.5 | 38 | 8 | 390 | 340 | 12 | 73 | M10 | 6.2 | 1 |
| .080.M | 205 | 100 | 28.5 | 38 | 8 | 390 | 340 | 12 | 73 | M10 | 6.2 | 1 |
| .100.M | 205 | 100 | 28.5 | 43 | 8 | 390 | 340 | 12 | 73 | M10 | 7.5 | 1 |
| .115.M | 205 | 100 | 28.5 | 43 | 8 | 390 | 340 | 12 | 73 | M10 | 7.5 | 1 |
| .150.M | 220 | 130 | 28.5 | 50 | 8 | 420 | 370 | 12 | 103 | M10 | 9.4 | 1 |
| .200.M | 220 | 130 | 28.5 | 50 | 8 | 420 | 370 | 12 | 103 | M10 | 9.4 | 1 |

CASE 1



ASSEMBLY CONNECTION "M"

