

THIS COPY IS PROVIDED ON A RESTRICTED BASIS AND IS NOT TO BE USED IN ANY WAY DETRIMENTAL TO THE INTERESTS OF PANDUIT CORP.

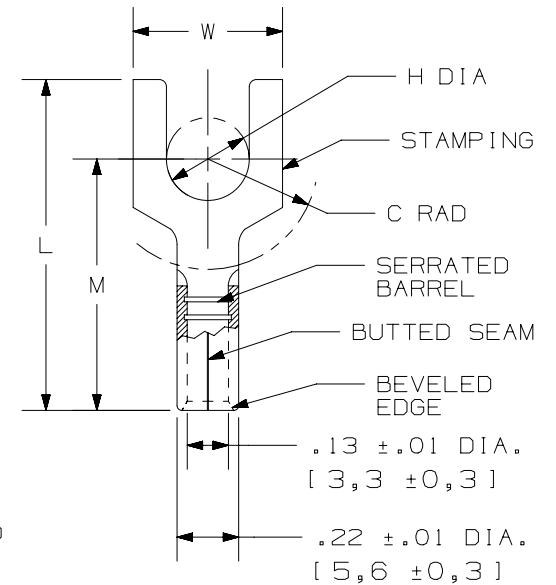
PANDUIT PART #	STUD SIZE		DIMENSIONS in. [ mm ]				
	ENGLISH	METRIC	L ± .03 [ 0,8 ]	W ± .01 [ 0,3 ]	C ± .015 [ 0,4 ]	M ± .03 [ 0,8 ]	H ± .01 [ 0,3 ]
E10-6FB	#6	M3	.75 [ 19,1 ]	.31 [ 7,9 ]	.22 [ 5,6 ]	.55 [ 14,0 ]	.15 [ 3,8 ]
E10-8FB	#8	M4	.78 [ 19,8 ]	.37 [ 9,4 ]	.22 [ 5,6 ]	.55 [ 14,0 ]	.17 [ 4,3 ]
E10-10FB	#10	M5	.78 [ 19,8 ]	.37 [ 9,4 ]	.23 [ 5,8 ]	.55 [ 14,0 ]	.20 [ 5,1 ]
E10-14FB	1/4"	M6	.89 [ 22,6 ]	.50 [ 12,7 ]	.30 [ 7,6 ]	.60 [ 15,2 ]	.27 [ 6,9 ]

UL & CSA TOOLS
CT-100A CT-200 CT-600-A (CT-570CH) CT-1570 CT-1701 (P10) CT-2500 (CT-2570CH)

PANDUIT APPROVED TOOLS
CT-160 CT-260

NOTES:

- UL LISTED & CSA CERTIFIED FOR:
  - A. #12-10 AWG [ 4,0-6,0 mm<sup>2</sup> ] SOLID OR STRANDED COPPER WIRE
  - B. 302°F [ 150°C ] MAX. OPERATING TEMPERATURE
  - C. 2000 VOLTS MAX
- MATERIAL:
  - A. STAMPING: .04" [ 1,0 ] THK COPPER, TIN PLATED
- WIRE STRIP LENGTH:  $9/32'' \begin{smallmatrix} +1/32 \\ -0 \end{smallmatrix}$  [ 7,1mm  $\begin{smallmatrix} +0,8 \\ -0 \end{smallmatrix}$  ]
- SEE [www.panduit.com](http://www.panduit.com) FOR PACKAGE QUANTITIES
- DIMENSIONS IN BRACKETS ARE METRIC EQUIVALENT



TITLE	
<b>STRONGHOLD FORK TERMINAL NON-INSULATED, BUTTED SEAM #12-10 AWG</b>	
CUSTOMER DRAWING	
ITEM REVISION NAME	00123SHK/00
DATASET FILE NAME	00123SHK_DC/00
UNLESS OTHERWISE SPECIFIED, DIMENSIONAL TOLERANCES ARE: IN [ mm ]	MATERIAL:  <b>SEE NOTES</b>
.X ± .XX ±	.XXX ± ANGLES ±
THIRD ANGLE PROJECTION	
DRAWN BY	DRAWING NUMBER: <b>SH41256</b>
JHNU	DATE
2/18	SCALE
TMR	N.T.S.
SHEET 1 OF 1	
SIZE A	

REV	DATE	BY	CHK	APR	DESCRIPTION	ECN
00	02/18	JHNU	TMR	RGB	RELEASED	00123SH

D10100DA/12