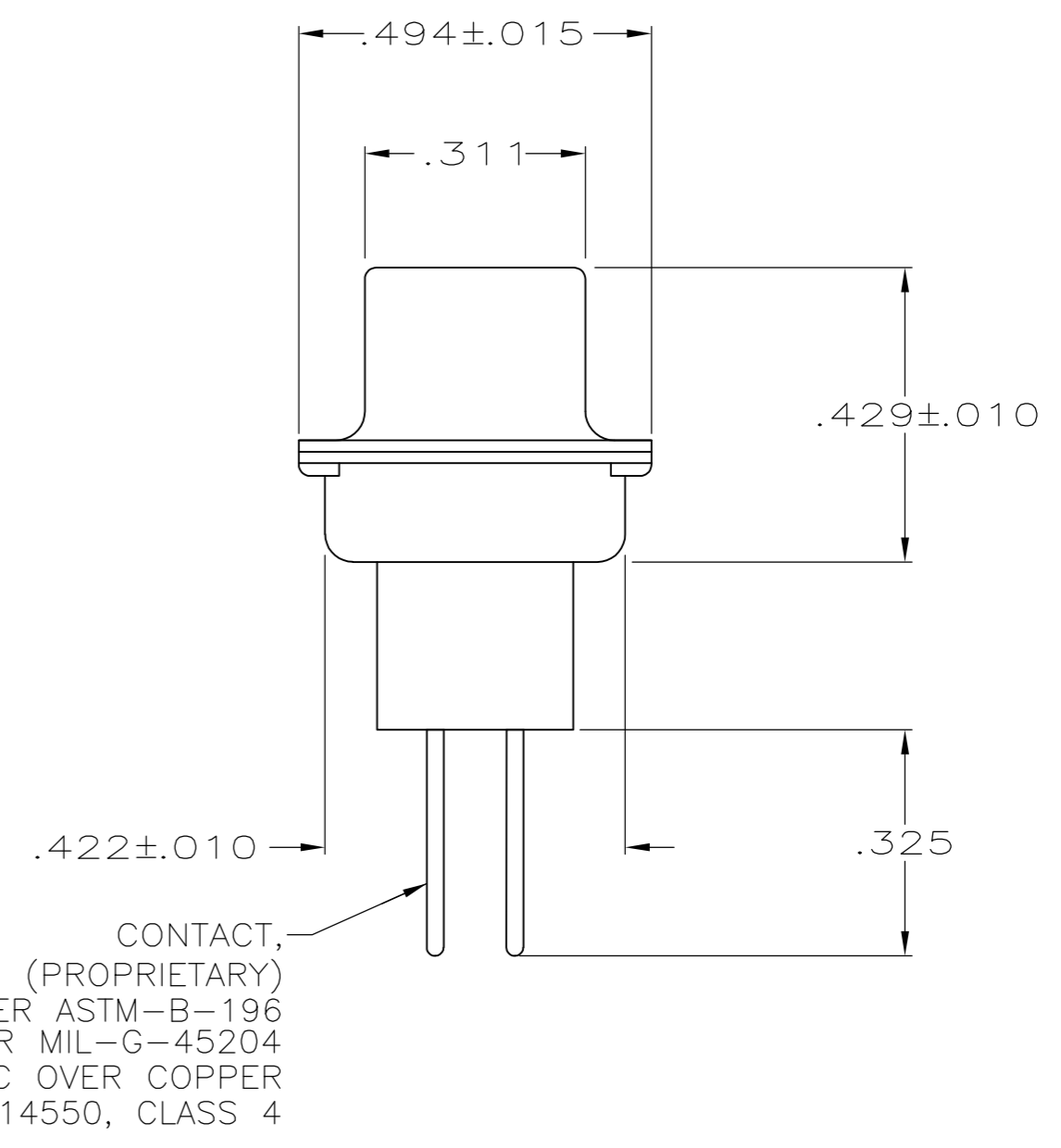
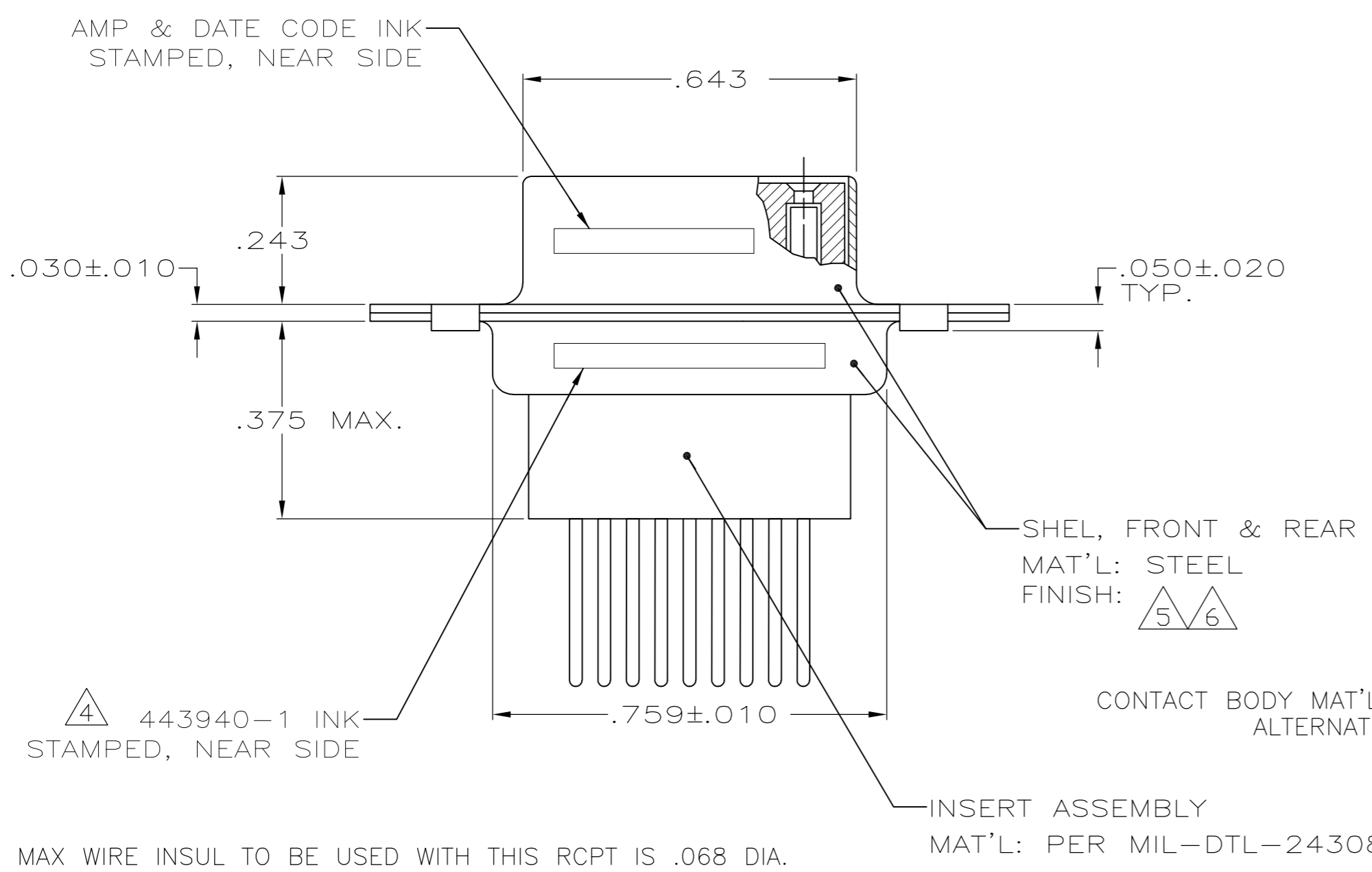
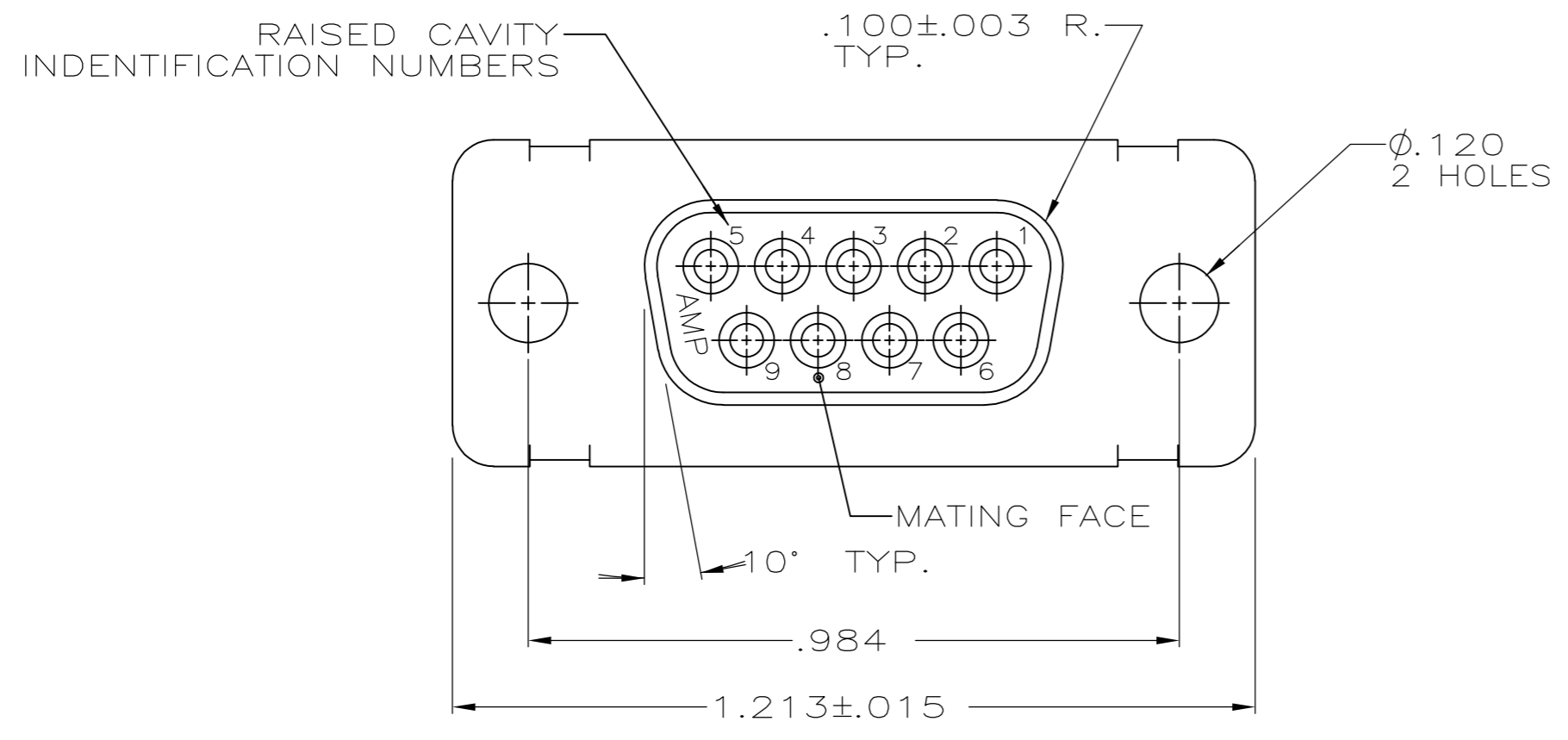


THIS DRAWING IS UNPUBLISHED. RELEASED FOR PUBLICATION
 © COPYRIGHT - By - ALL RIGHTS RESERVED.

LOC		DIST		REVISIONS			
P	LTR	DESCRIPTION	DATE	DWN	APVD		
D		REV PER ECO-15-005911	21MAY15	KG	DM		



- 1. MAX WIRE INSUL TO BE USED WITH THIS RCPT IS .068 DIA.
- 2. STAINLESS STEEL RETENTION CLIPS ARE INCLUDED IN INSERTS.
- 3. THIS RCPT. WILL ACCEPT SIZE 20 SOCKET CONTACT M39029/63-368 OR ANY AMP HD-20 SOCKET CONTACT.
- 4. AMP PART NO STAMPED ON CONNECTOR REPRESENTS KIT NUMBER WITH CONTACTS.
- 5. FINISH: CADMIUM PER QQ-416.
- 6. FINISH: ZINC PLATED PER ASTM-B-633 .000200-.000400 THK WITH SUPPLEMENTARY CHROMATE (Cr3+).

CONTACT BODY MAT'L: LEADED NICKEL COPPER (PROPRIETARY)
 ALTERNATE MAT'L: COPPER ALLOY PER ASTM-B-196
 FINISH: GOLD PER MIL-G-45204
 CLASS 1, TYPE II GRADE C OVER COPPER
 UNDERPLATE PER MIL-C-14550, CLASS 4

6	5-443940-1
5	443940-1
REMARKS	PART NO

THIS DRAWING IS A CONTROLLED DOCUMENT.		DWN	J.A.Baker	4-23-97
DIMENSIONS: INCHES		CHK	J.WEAVER	5-2-97
TOLERANCES UNLESS OTHERWISE SPECIFIED:		APVD	-	-
0 PLC ± -		PRODUCT SPEC	NAME	
1 PLC ± -		APPLICATION SPEC	TE Connectivity	
2 PLC ± -			CONNECTOR ASSY,AMPLIMITE,SIZE 1, 9 POSITION,SERIES 109	
3 PLC ± .005			SIZE	CAGE CODE
4 PLC ± -			A2	00779
ANGLES ± -		WEIGHT	DRAWING NO	RESTRICTED TO
FINISH			C=443940	-
SEE CALLOUTS		CUSTOMER DRAWING	SCALE	SHEET
			4:1	1 of 1
			REV	D