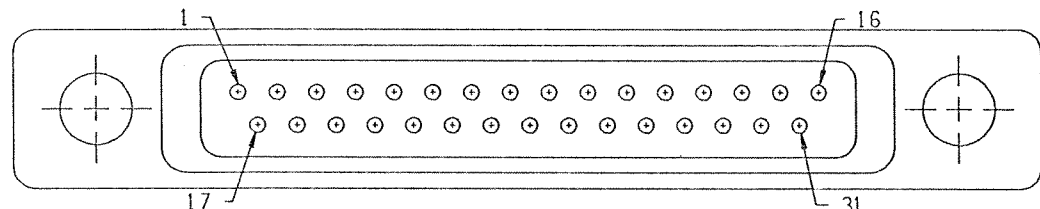
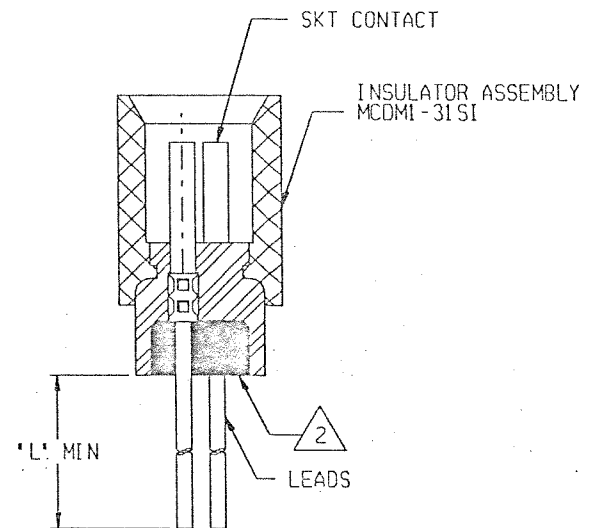
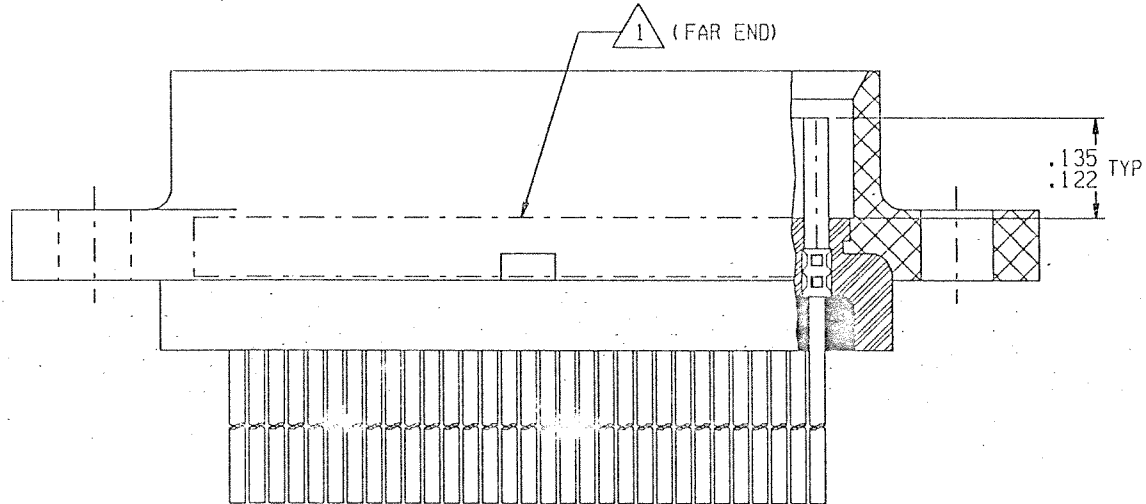
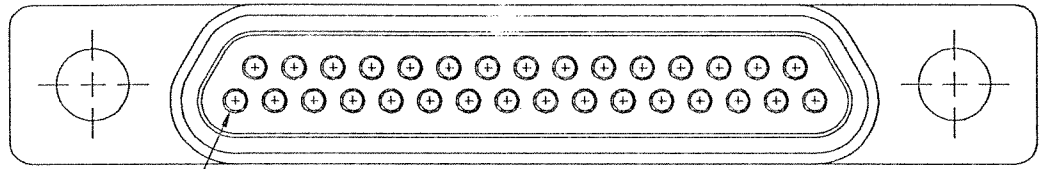



REVISION					
ZONE	LTR	ECN	DESCRIPTION	DATE	APPROVED
	B	39399	GENERAL DWG UPDATE	5/2/99	sc



1532143-8

NOTES: UNLESS OTHERWISE SPECIFIED

- ▲ MARK PER TIS.
- ▲ POTTING COMPOUND USED IS 194-8102-6215/6225.
- 3. CRIMP LEADS INTO CONTACTS PER MEP 302-05.
- 4. EPOXY WICKING FROM THE REAR OF THE CONNECTOR ON INSULATED LEADS MUST NOT EXCEED .125 MAX ON #25 AWG AND SMALLER LEADS AND .200 MAX ON #24 AWG AND LARGER LEADS.

UNLESS OTHERWISE SPECIFIED DIMENSIONS ARE IN INCHES. TOLERANCE ARE: FRACTIONS DECIMALS ANGLES ± 1/8 .XX ± .01 ± 2° .XXX ± .005	APPROVALS		 MICRODOT CONNECTORS A DIVISION OF UNI-STAR INDUSTRIES INC. 325 PASADENA AVE., SO. PASADENA, CA 91030	PROD CODE 842 CODE M
	SIGNATURE	DATE		
MATERIAL:	DRAWN BY MEL F. CAMPBELL	09/20/99	METAL SHELL 'D' CONNECTOR MCDMI-B-01'S	SIZE A
	P.E. <i>[Signature]</i>	5/2/99		
FINISH:	THIS DOCUMENT IS THE PROPERTY OF MICRODOT CONNECTORS, A DIVISION OF UNI-STAR INDUSTRIES INC. USE OF THIS DOCUMENT OR ANY PART THEREOF IS STRICTLY FORBIDDEN WITHOUT THE EXPRESS WRITTEN PERMISSION OF MICRODOT CONNECTORS, A DIVISION OF UNI-STAR INDUSTRIES INC.		DRAWING NO. 095-0000-0092	SCALE: NONE
				SHEET 1 OF 1