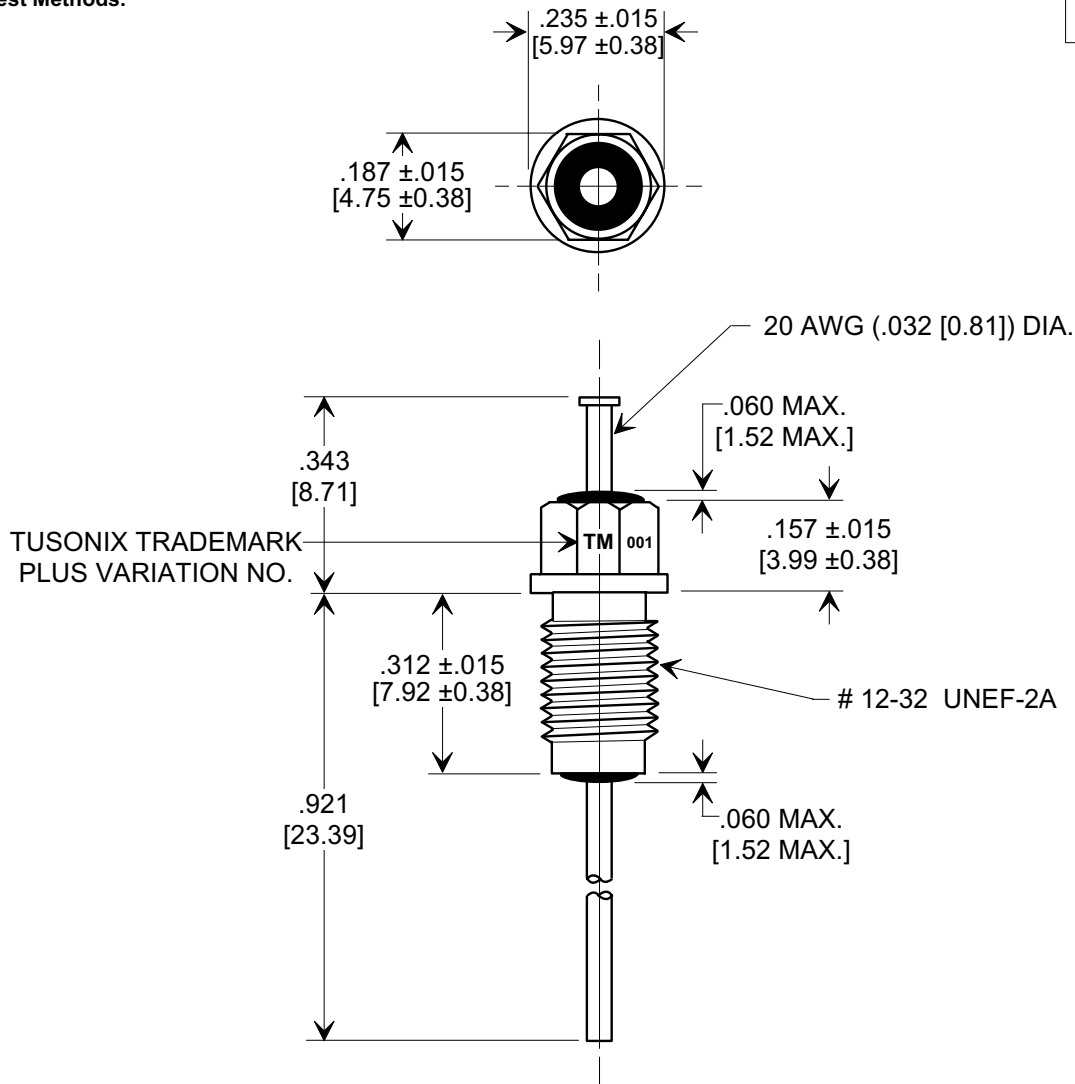
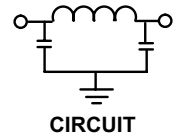
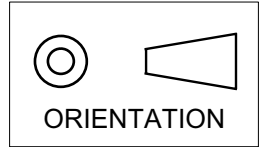


MARKETING SALES DRAWING
DIMENSIONS IN INCHES - DO NOT SCALE THIS DRAWING
DIMENSIONS IN METRIC - []

Electrical Testing
per Tusonix standard
test plans and Mil-Std-202
Test Methods.



NOTES:

- TUSONIX STANDARD PART NUMBER: 4253-001.
TUSONIX RoHS COMPLIANT PART NUMBER: 4253-001 LF.
CUSTOMER MUST SPECIFY STANDARD OR RoHS PART NUMBER WHEN ORDERING.
- LEAD FINISH: STANDARD PART #: 60/40 SOLDER PLATED. RoHS PART #: SILVER PLATED.
- PART MARKING: TRADEMARK AND VARIATION NUMBER ON HEX FLATS.
STANDARD PART: BLACK INK. RoHS PART: GREEN INK.

MIN. Cx	WORKING VOLTAGE 125°C	CURRENT VDC	MINIMUM NO LOAD INSERTION LOSS @ 25°C (dB) PER MIL-STD-220			
			10 MHz	100 MHz	1 GHz	10 GHz
25,000 pF	100 VDC	10 A	30	65	70	70

REVISION RECORD Original Release C.O. 6611 DIM'S. REV. TITLE CHGD. E.C. 5-26-92 6667 DIM'S. REV. TITLE CHGD. E.C. 5-26-92 20010713-2-03 ADDED NOTES 1-3. S.M. 06-15-05 20050607-2-02	0		MULTILAYER BUSHING STYLE EMI FILTER	Title MULTILAYER BUSHING STYLE EMI FILTER	Scale 3 X
	1				
	2		DECIMAL ±	Drawn S.M. 07-17-01	Approved T.C. 07-17-01
	3		ANGLES ± .031[0.79]	TUSONIX TUCSON, ARIZONA	
	4				4253-001

X-2015 Rev-0