

THIS DRAWING IS UNPUBLISHED. RELEASED FOR PUBLICATION
 © COPYRIGHT BY TYCO ELECTRONICS CORPORATION. ALL INTERNATIONAL RIGHTS RESERVED.

LOC	DIST	REVISIONS					
FT	0	P	LTR	DESCRIPTION	DATE	DWN	APVD
		A		REVISED PER ECO-10-013614	13OCT10	HMR	CR

NOTES:

MATERIAL:

HOUSING: THERMOPLASTIC, UL94V-0, BLACK.
 TERMINALS: BRIGHT TIN OVER COPPER ALLOY.
 SCREWS: #6-32 STEEL, ZINC PLATING W/ CLEAR CHROMATE, EXCEPT WHERE NOTED OTHERWISE.

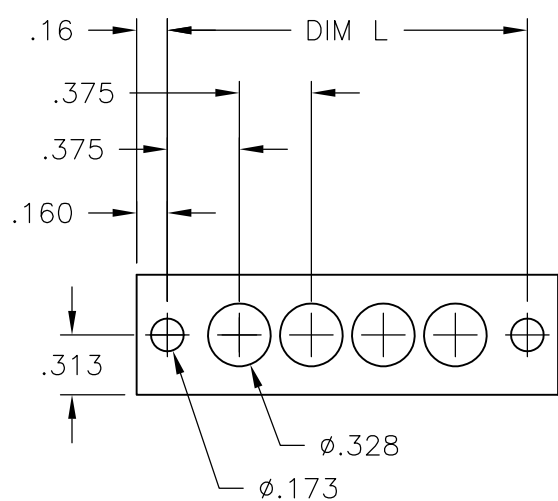
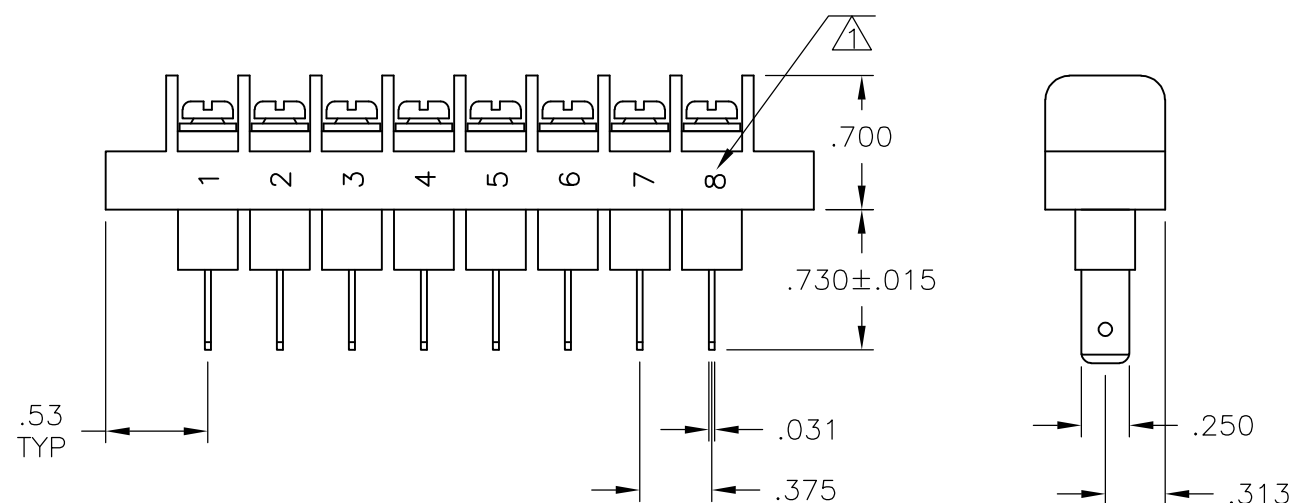
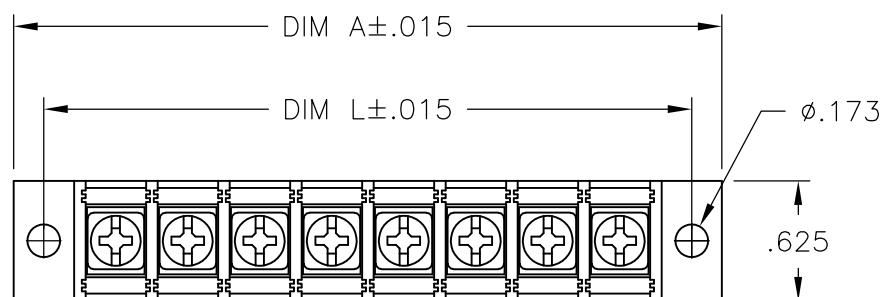
ELECTRICAL:

RATED CURRENT UL/CSA:
 CLASS C: 20A, 300V.
 CLASS D: 5A, 600V.
 WIRE RANGE: 12-22 AWG.

MECHANICAL:


RECOMMENDED TORQUE: 7 IN-LB.
 OPERATING TEMP.: 105°C MAX.

 WHITE INK MARKING.



MOUNTING PANEL LAYOUT

3.375	3.689	8	JC6-Q308-08-131	7-1437665-0
DIM. L	DIM. A	NO. OF POS.	CATALOG NUMBER	PART NO.

THIS DRAWING IS A CONTROLLED DOCUMENT.		DWN	S SCHLEGEL	3/7/05	 Tyco Electronics Corporation Harrisburg, PA 17105-3608	
DIMENSIONS: INCHES		CHK	S YODER	3/7/05		
TOLERANCES UNLESS OTHERWISE SPECIFIED:		APVD	S YODER	3/7/05	NAME	
0 PLC	± -	PRODUCT SPEC		JC6-Q308-08-131 ASSEMBLY		
1 PLC	± -	APPLICATION SPEC		SIZE		
2 PLC	± .02	MATERIAL		CAGE CODE		DRAWING NO
3 PLC	± .010	FINISH		A300779		G-7-1437665-0
4 PLC	± -	MATERIAL		WEIGHT		RESTRICTED TO
ANGLES	± -	MATERIAL		CUSTOMER DRAWING		SCALE
		MATERIAL		NTS		SHEET
		MATERIAL		1 OF 1		REV
		MATERIAL		A		