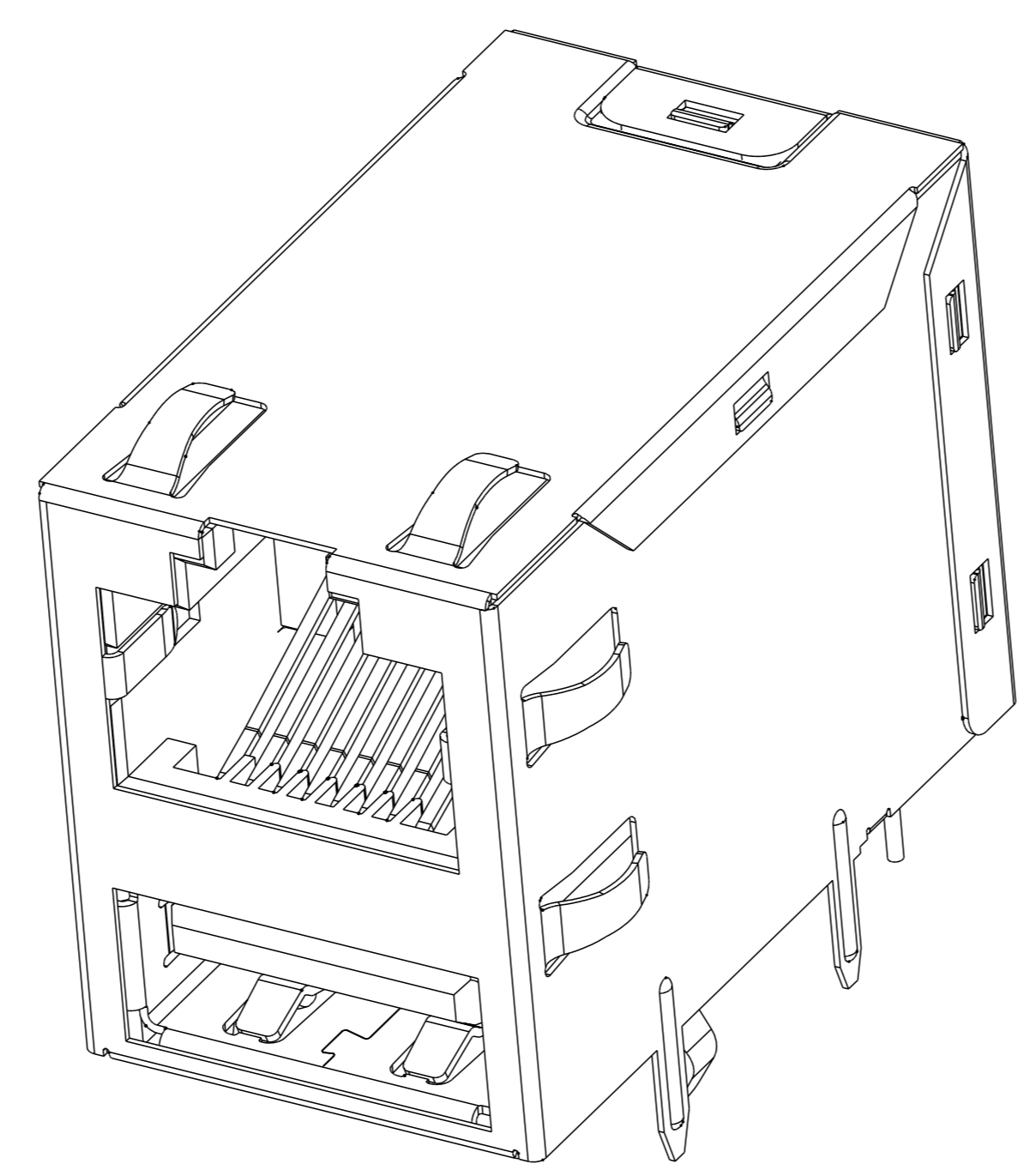
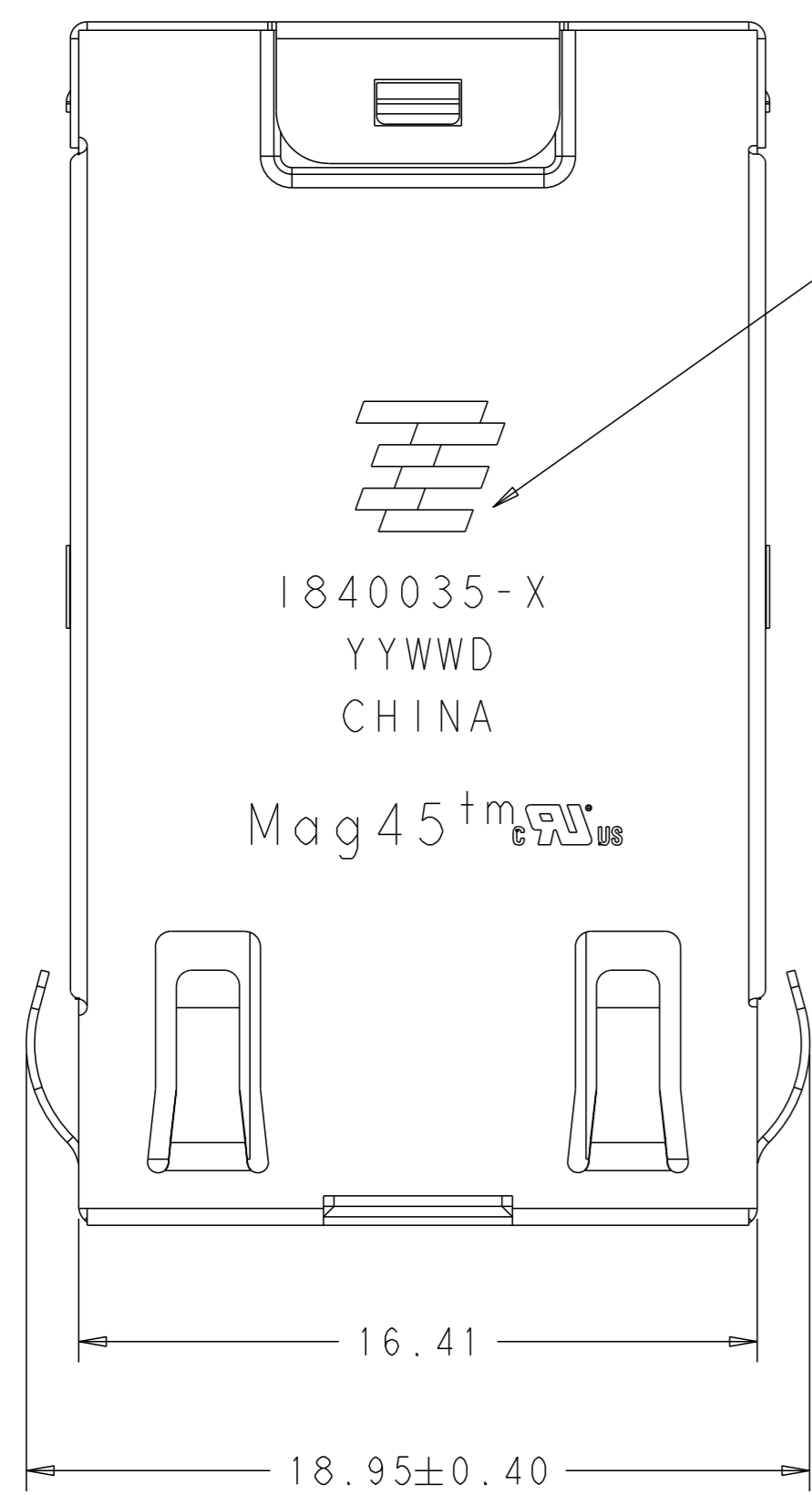


REVISIONS				
#	LY#	DESCRIPTION	DATE	OWN APVD
C		ECO-16-005052	01APR2016	LL SH



1. RJ45 MATERIALS

HOUSING: THERMOPLASTIC, BLACK, FLAMMABILITY RATED UL 94V-0  
 SHIELD : BRASS, 0.2 mm THICK, PREPLATED WITH MIN 0.76 um SEMI-BRIGHT NICKEL, POST DIPPED WITH 2.54 um MIN SAC SOLDER AT GROUND PINS.  
 CONTACT: PHOSPHOR BRONZE, WITH 1.27 um MIN OVERALL NICKEL UNDERPLATE AND SELECTIVE 1.27 um MIN GOLD PLATING AT MATING INTERFACE  
 SOLDER TAIL: COPPER STEEL, PLATED WITH 2.54 um MIN MATTE TIN

USB MATERIALS:

HOUSING: THERMOPLASTIC, FLAMMABILITY RATED UL94V-0  
 CONTACT: COPPER ALLOY WITH 0.76 MIN GOLD PLATING OVER 1.27 um MIN OVERALL NICKEL UNDERPLATE  
 SHELL : COPPER ALLOY, PREPLATED WITH MIN 0.76 um SEMI-BRIGHT NICKEL, 2.54 um TIN PLATED

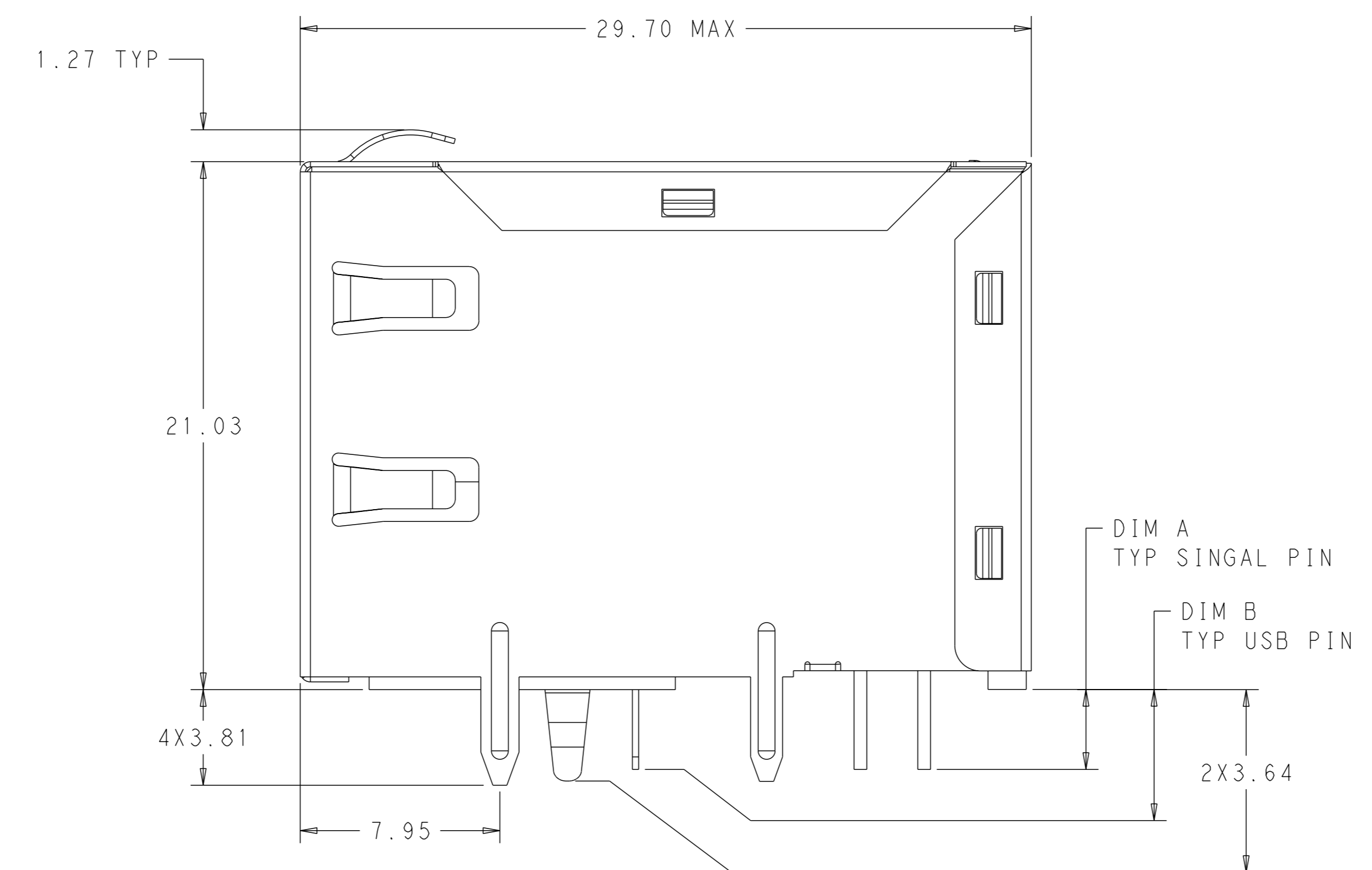
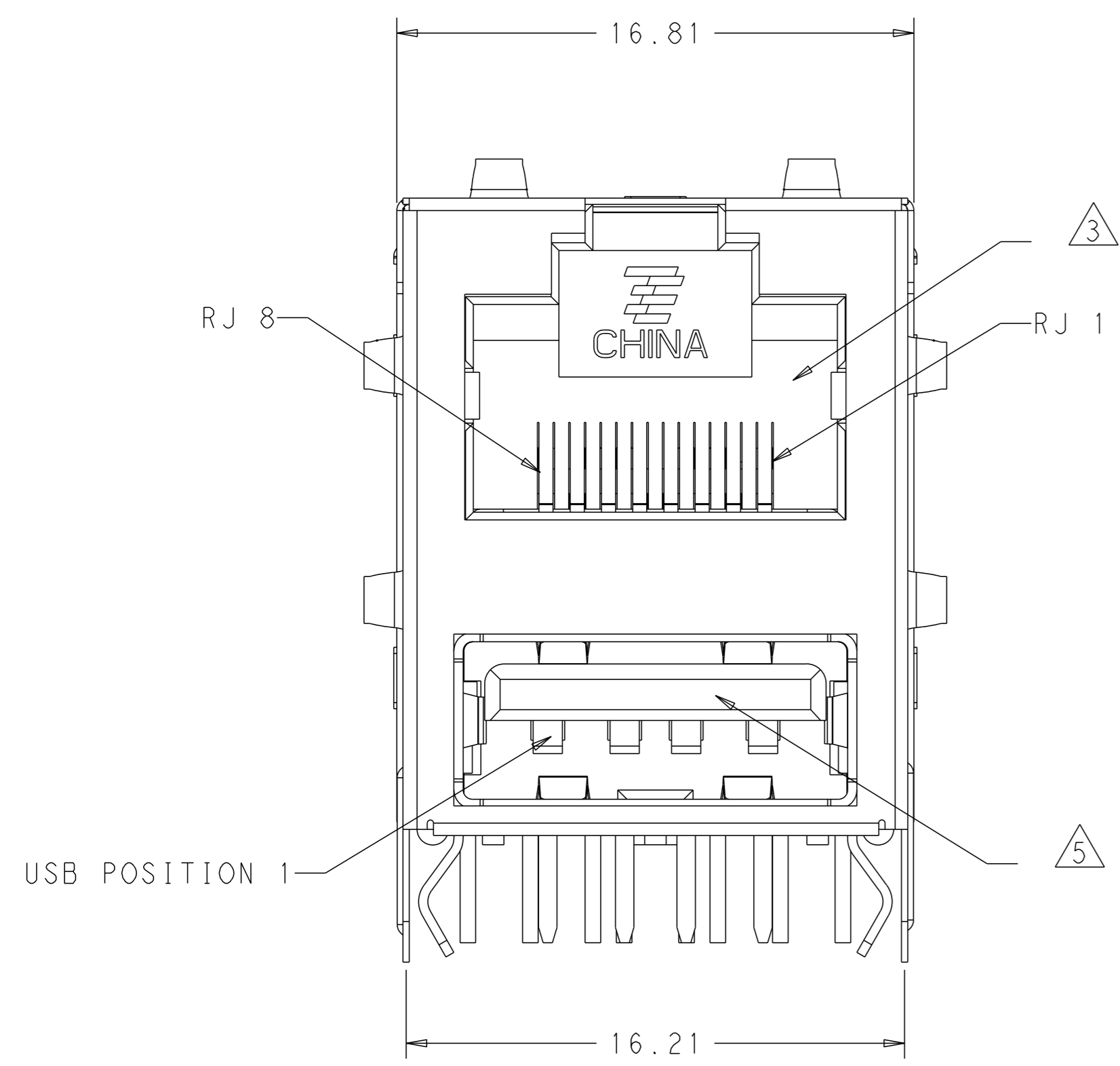
2. OPERATING TEMPERATURE -40°C TO +85°C.

3. RJ45 CAVITY CONFORMS TO FCC RULES AND REGULATION PART 68 SUBPART F.

4. TE CONNECTIVITY LOGO, PART NUMBER, DATE CODE, COUNTRY OF ORIGIN AND AGENCY LOGO TO BE MARKED IN APPROXIMATE LOCATION SHOWN.

5. MATING INTERFACE COMPLIES WITH USB SPECIFICATION REV 2.0.

6. THESE PARTS ARE RECOMMENDED FOR WAVE SOLDERING PROCESS, PREHEAT TEMPERATURE IS 120°C TO 160°C, 120 SECONDS TO 180 SECONDS, PEAK WAVE SOLDERING TEMPERATURE IS 260°C MAX, 10 SECONDS MAX.



OBSELETE	3.81	3.81	1840035-2
	3.18	3.18	1840035-1
	DIM B	DIM A	PART NO.

THIS DRAWING IS A CONTROLLED DOCUMENT.

DIMENSIONS:	TOLERANCES UNLESS OTHERWISE SPECIFIED:	OWN: WILLIAM/COLIN 08DEC2010	CHK: TOWER YU 08DEC2010	APVD: KEITH ZHU 08DEC2010	NAME: RJ45(TM) OVER SINGLE USB THROUGH CIRCUIT, W/O LEDS
mm	0 PLC ± 1 PLC ± 2 PLC ±0.25 3 PLC ±0.25 4 PLC ± ANGLES ±*	SIZE: A1	CAGE CODE: 100779	DRAWING NO: 1840035	RESTRICTED TO: -
MATERIAL:	FINISH:	WEIGHT:	CUSTOMER DRAWING		SCALE: 5:1 SHEET 1 OF 2 REV C

STC TE Connectivity

