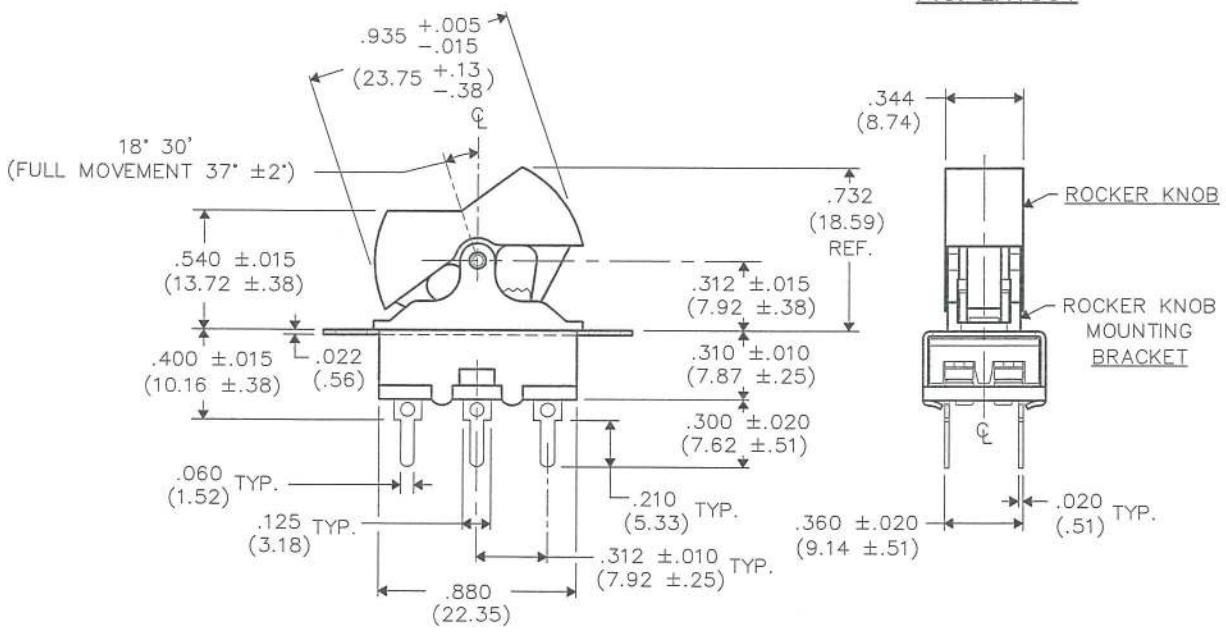
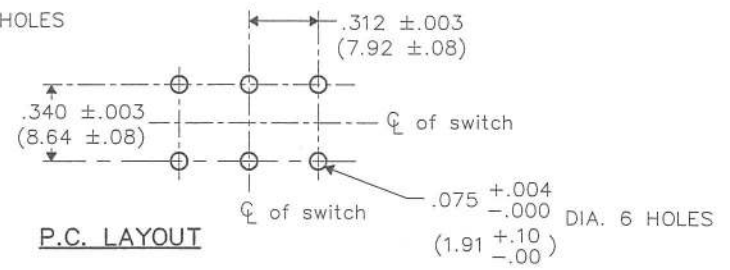
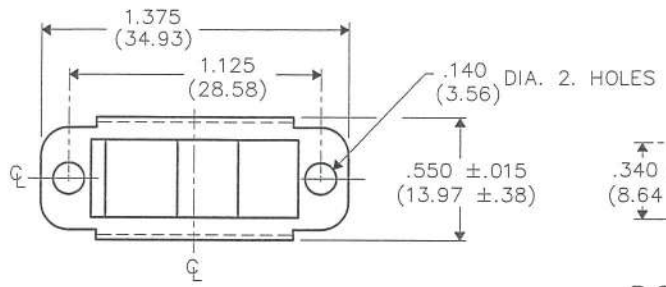


THIS INFORMATION IS CONFIDENTIAL AND PROPRIETARY TO CW INDUSTRIES INCORPORATED AND ITS AFFILIATES. IT MAY NOT BE DISCLOSED TO ANYONE, OTHER THAN CW INDUSTRIES PERSONNEL, WITHOUT WRITTEN AUTHORIZATION FROM CW INDUSTRIES INCORPORATED, SOUTHAMPTON, PENNSYLVANIA USA.

DIMENSIONS IN INCHES (MILLIMETERS)
DO NOT SCALE DRAWING

Dwg. No.
GR5-326-XXXX



| -XXXX | ROCKER KNOB COLOR |
|-------|-------------------|
| -0889 | ORANGE |
| -0890 | BLUE |
| -0891 | RED |
| -0892 | WHITE |
| -0893 | YELLOW |

| | | | | | | | | | | | | | |
|---------------|------------------|--------------------------|---------|---|---|---|---|---|---|---|---|---|----|
| B-FORMAT 2002 | REVISIONS | RELEASED. DGW 7-01-13 | 7-01-13 | 1 | 2 | 3 | 4 | 5 | 6 | 7 | 8 | 9 | 10 |
|---------------|------------------|--------------------------|---------|---|---|---|---|---|---|---|---|---|----|

| | | |
|-----------------------------------|--|---|
| PDF MADE | CW INDUSTRIES Southampton, Pa. 18966 | Title: SWITCH ASSEMBLY D.P.- D.T. |
| | TOLERANCES UNLESS OTHERWISE SPECIFIED | |
| | 2 Place Decimal ±.010 METRIC | |
| | 3 Place Decimal ±.005 1 Place Dec. ±.25mm | 2 Place Dec. ±.13mm |
| Made for: CW IND. | Division: SWITCH | |
| Drawn by: DGW 7-01-13 | Dwg. No. GR5-326-XXXX | |
| Checked by: <i>G. Guld 7-2-13</i> | | |
| Approval: <i>G. Guld 7-2-13</i> | | |

MASTER