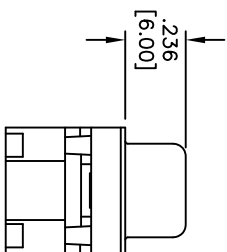
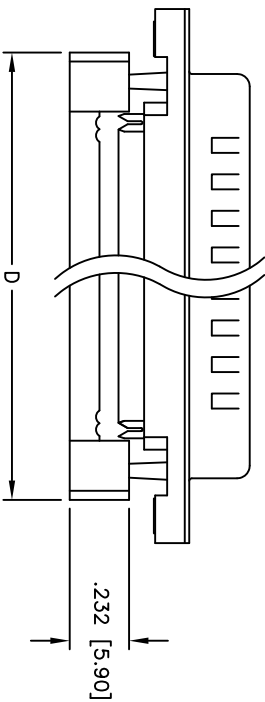
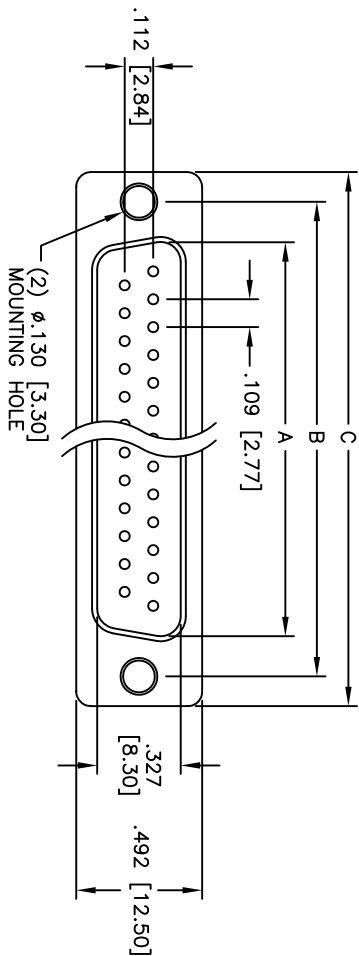


APPROVED: _____
 DATE: _____ TITLE: _____

Rev	AWO #	Description	Date	Appr
-		RELEASED	4/25/05	
A		REVISED SPEC.	03/04/13	



Positions	DIMENSIONS			
	A	B	C	D
9	.666 [16.92]	.984 [24.99]	1.213 [30.81]	.883 [22.44]
15	.994 [25.25]	1.312 [33.32]	1.541 [39.14]	1.213 [30.81]
25	1.534 [38.96]	1.852 [47.04]	2.088 [53.04]	1.755 [44.57]
37	2.182 [55.43]	2.500 [63.50]	2.729 [69.32]	2.414 [61.32]

Unit: Inch / mm

SPECIFICATIONS:
 Material:
 Insulator: PBT, glass reinforced, rated UL 94V-0
 Insulator color: Black
 Contacts: Phosphor Bronze
 Shell: Steel, Tin plated
 Plating:
 Gold Flash over Nickel underplate on mating area,
 Tin over Copper underplate on IDC area

Electrical:
 Operating voltage: 250 VAC max
 Current rating: 3 Amps max
 Contact resistance: 15 mohms max
 Insulation resistance: 3,000 Mohms min
 Dielectric withstanding voltage: 1,000 VAC for 1 minute
Mechanical:
 Recommended cable size: 28-30 AWG
 Temperature Rating:
 Operating temperature: -55°C to +125°C
 Environmental:
 Lead free, RoHS compliant

ADAM TECH

909 Rahway Avenue, Union, NJ 07083
 Phone: 908-687-5000 Fax: 908-687-5710

909 Rahway Avenue, Union, NJ 07083
 Phone: 908-687-5000 Fax: 908-687-5710

TITLE		IDC FLAT CABLE D-SUB PLUG	
DRAWN		SS	4/25/05
CHECKED			
APPROVED			
SIZE	PART NO.	SCALE	REV.
X	DXXX-PF-M1	NTS	A
REF:	S00013T	SHEET	1 OF 1