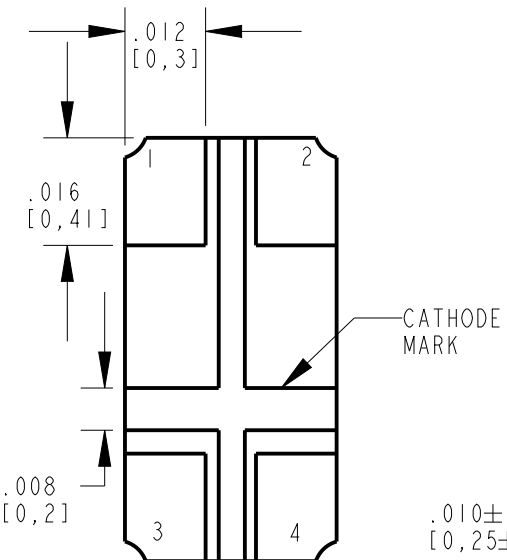
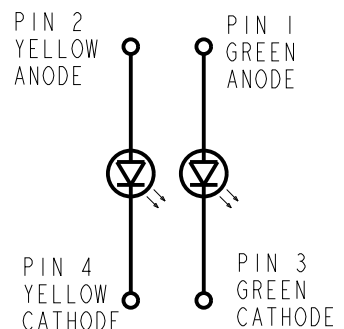
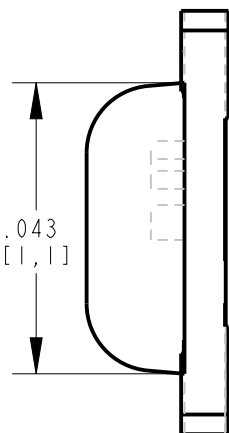
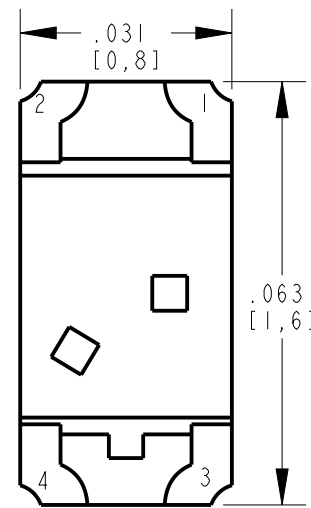


OPERATING CHARACTERISTICS AT 25°C AMBIENT

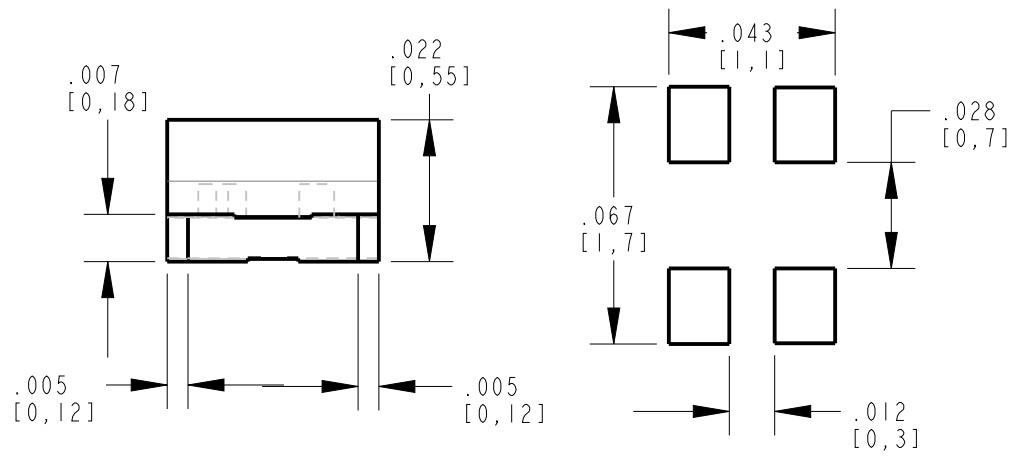
DIALIGHT PART NUMBER	COLOR	LUMINOUS INTENSITY (mcd) @ I <sub>F</sub> = 20 mA			FORWARD VOLTAGE (V) @ I <sub>F</sub> = 20 mA			REVERSE CURRENT (μA) @ V <sub>R</sub> = 5 V	PEAK WAVELENGTH	DOMINANT WAVELENGTH		VIEWING ANGLE (DEG)
		MIN	TYP	MAX	MIN	TYP	MAX	MAX	(TYP)	MIN	MAX	TYP
597-7725-607F, -602F	GREEN	18	—	71	1.5	—	2.4	10	574	564	578	130
	YELLOW	28	—	112	1.5	—	2.4		591	582	596	

ABSOLUTE MAXIMUM RATINGS AT 25°C AMBIENT	VALUE	UNITS
POWER DISSIPATION	62.5	mW
DC FORWARD CURRENT	25	mA
PEAK FORWARD CURRENT (1/10 DUTY CYCLE, 0.1 ms PULSE WIDTH)	60	mA
REVERSE VOLTAGE	5	V
STORAGE TEMPERATURE	-40 to +85	°C
OPERATING TEMPERATURE	-30 TO +85	°C
SOLDERING TEMPERATURE, FOR 1/10 SEC	260	°C



LED SCHEMATIC

SCALE 35.000



RECOMMENDED SOLDER PAD LAYOUT

**RoHS COMPLIANT 597-7725-60XF**

Part Numbers with the "F" suffix ending are RoHS Compliant.  
 For example: 597-772560XF  
 Packaging is marked with "RoHS Compliant" label or equivalent markings. These parts can be used with RoHS reflow profile.  
 Parts can be wave soldered, dip soldered or hand soldered using typical lead-free soldering process with max 260°C temp. for 5 sec.

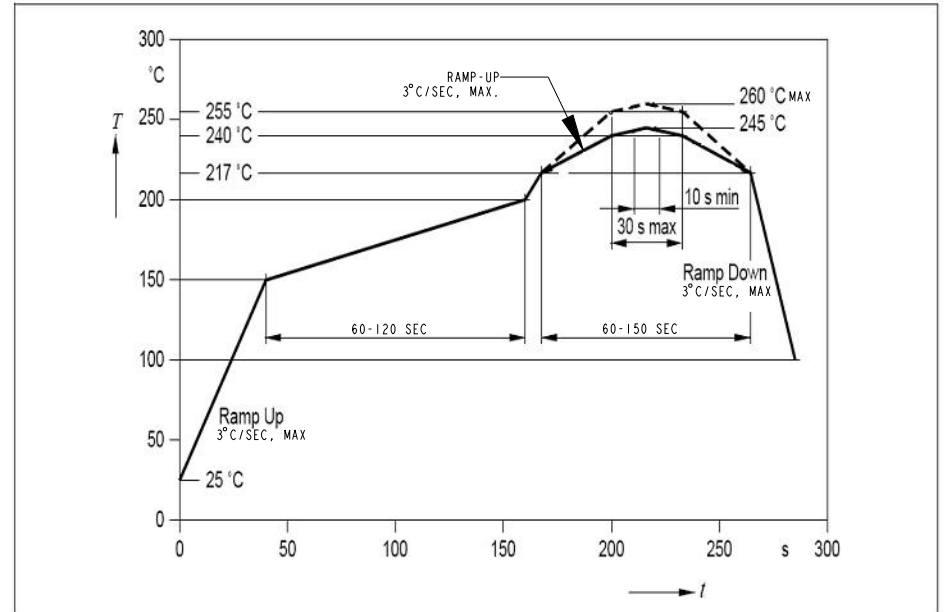
NOTES:

1. LENS: YELLOW/GREEN
2. LED CHIP: ALLnGaP
3. LEADS ARE GOLD (Au) PLATED FINISH.
4. PACKAGING: -607F SUFFIX MEANS 20 PCS SAMPLE STRIP  
 -602F SUFFIX MEANS 4000 PARTS/REEL, 7 INCH (180mm) DIA. REEL.
5. THIS ASSEMBLY CONTAINS ELECTROSTATIC DISCHARGE SENSITIVE DEVICES (ESDS). MAINTAIN ALL PRECAUTIONARY MEASURES DURING ASSEMBLY, HANDLING, AND STORAGE IN ACCORDANCE WITH IPC-A-610.
6. MOISTURE SENSITIVITY LEVEL 3.
7. TAPE AND REEL LEDS MAY REQUIRE RE-TAPING AFTER TWELVE MONTHS.
8. PIN NUMBERS FOR REFERENCE ONLY, DESIGNATION NON-EXISTENT ON PART.

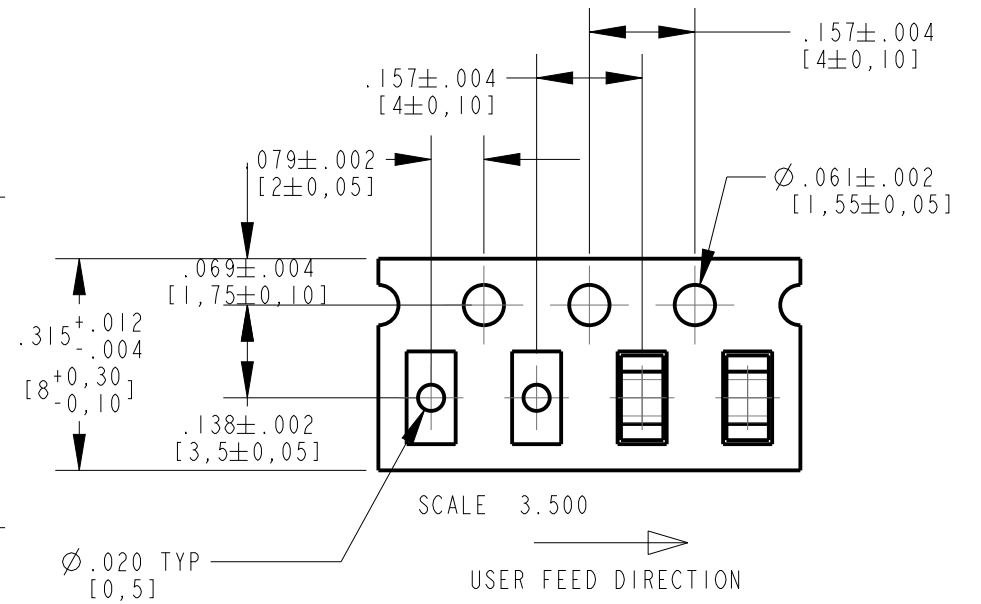


**ATTENTION:**  
 OBSERVE PRECAUTIONS FOR  
 HANDLING ELECTROSTATIC  
 SENSITIVE DEVICES

REV	ECN NO	REVISIONS	DRN	CKD	APP	DATE
A	—	NEW RELEASE	VP	JTD	NO	12-18-15



RECOMMENDED RoHS SOLDER PROFILE



PACKAGE DIMENSIONS OF TAPE AND REEL

THIS DRAWING AND THE CONTENTS HEREIN ARE CONFIDENTIAL AND THE SOLE PROPERTY OF DIALIGHT. REPRODUCTION OF THIS DRAWING OR CONSTRUCTION OF ANY PARTS WITHIN THIS DRAWING ARE FORBIDDEN WITHOUT THE WRITTEN CONSENT OF DIALIGHT.		
SCALE: 5.000	DRAWING NUMBER	REV
ALL DIM'S IN: INCHES (MM)	C-18237	A
TOLERANCES: UNLESS OTHERWISE SPECIFIED	TITLE YEL/GRN BI-COLOR 0603 SM LED RoHS COMPLIANT	
FRACTIONS: ±1/64	MATERIAL	
DECIMALS (.XX): ±.01	Dialight 1501 ROUTE 34 SOUTH FARMINGDALE, NJ 07727	
DECIMALS (.XXX): ±.005	FINISH:	
DECIMALS (.XXXX): ±.0005	FSCM 83330	
ANGLES: ±1°	SHEET 1 OF 1 FAMILY TABLE:	