

F

E

D

C

B

A

F

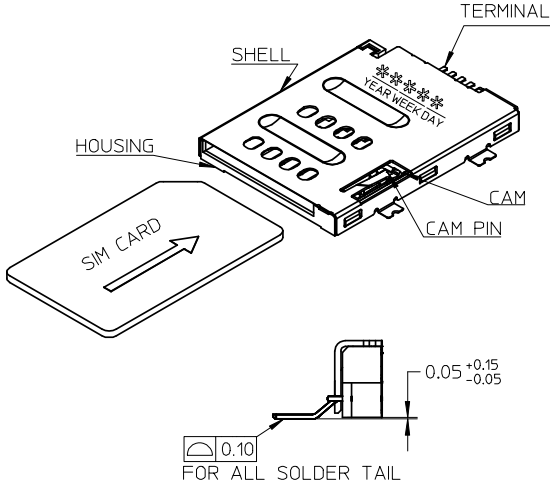
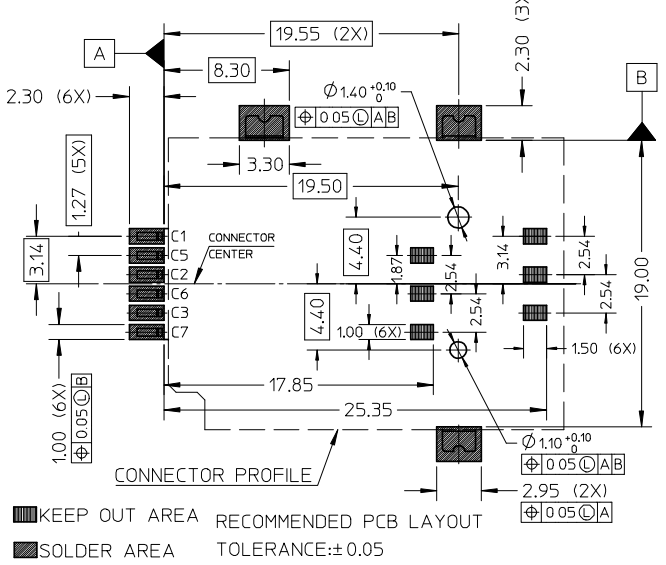
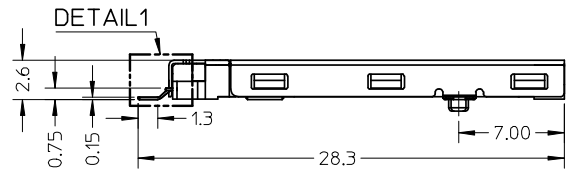
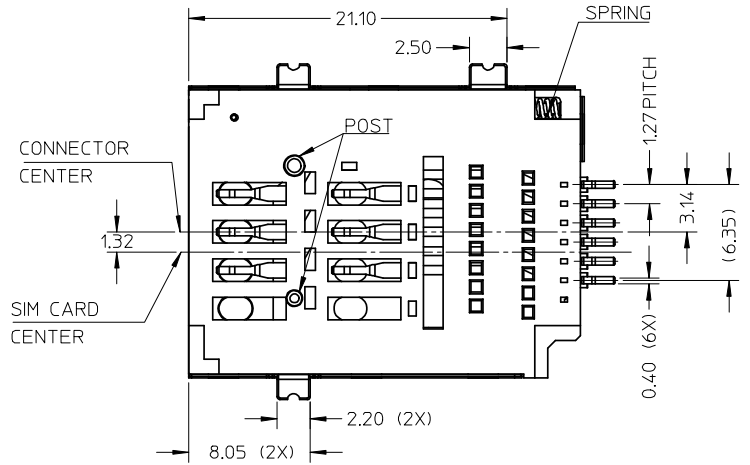
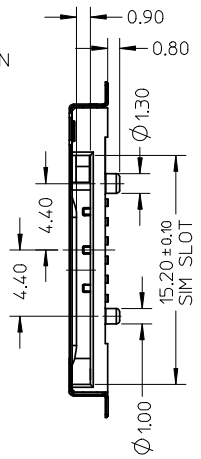
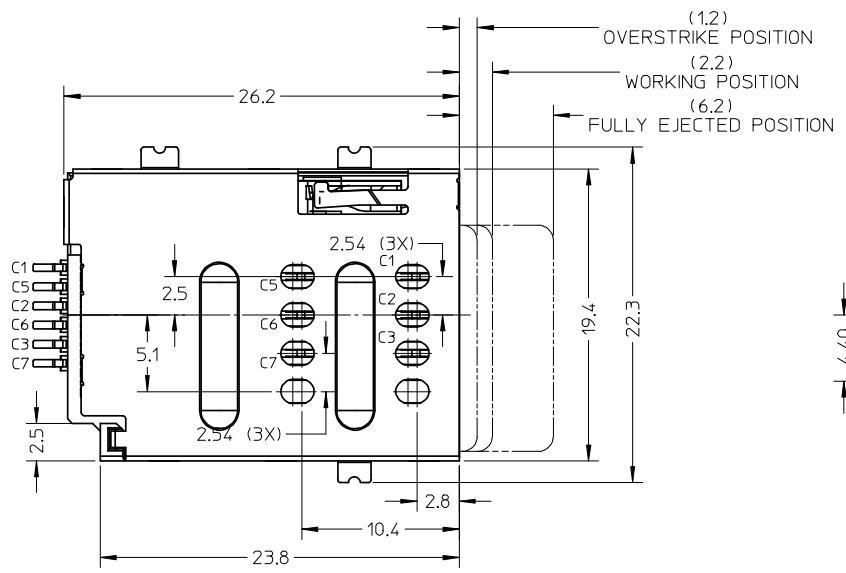
E

D

C

B

A



NOTES:
 1.MATERIAL: CAM: NYLON, GLASS FILLED, UL94V-0, COLOR:BLACK
 HOUSING : LCP, GLASS FILLED, UL94V-0, COLOR:BLACK
 TERMINAL : PHOSPHOR BRONZE
 SHELL: STAINLESS STEEL
 SPRING: SWPB
 CAM PIN:STAINLESS STEEL
 2.FINISH: TERMINAL: 50µ MIN NICKEL UNDER PLATED
 30µ MIN GOLD PLATING ON CONTACT AREA
 50µ MIN TIN ON SOLDERING AREA
 SHELL: 50µ MIN NICKEL UNDER PLATED
 GOLD FLASH ON SOLDERING AREA
 SPRING: 60µ MIN NICKEL OVER 100µ MIN CUPRUM UNDERPLATED
 3.THIS PART IS LEAD-FREE.

1050341001	PUSH PUSH SIM WITH POST
1050340001	PUSH PUSH SIM WITHOUT POST
PART NO.	DESCRIPTION

DETAIL 1

RELEASED EC NO: SHZ008-0670 2008/06/30 DRWN:YWANG91 CHKD:YLZHU 2008/06/30 APPR:HWANG 2008/07/03	QUALITY SYMBOLS ▽=0 ◻=0	GENERAL TOLERANCES (UNLESS SPECIFIED)		DIMENSION STYLE MM ONLY		SCALE 3:1	DESIGN UNITS METRIC	THIRD ANGLE PROJECTION	
		mm	INCH	DRAWN BY YWANG	DATE 2007/12/21	TITLE 2.6MM H, 6 PIN PUSH-PUSH SIM CONNECTOR			
A	REV	4 PLACES	± ---	± ---	CHECKED BY YLZHU	DATE 2007/12/21	MOLEX INCORPORATED DOCUMENT NO. SD-105034-001		
		3 PLACES	± ---	± ---	DATE 2007/12/21	SHEET NO. 1 OF 1			
		2 PLACES	± 0.15	± ---	APPROVED BY HWANG	DATE 2007/12/21	SEE TABLE		
		1 PLACE	± 0.2	± ---	MATERIAL NO.	THIS DRAWING CONTAINS INFORMATION THAT IS PROPRIETARY TO MOLEX INCORPORATED AND SHOULD NOT BE USED WITHOUT WRITTEN PERMISSION			
		ANGULAR ± 2 °		DRAFT WHERE APPLICABLE MUST REMAIN WITHIN DIMENSIONS					